



H&C[®] INFUSION[®] ACETONE DYE STAINS achieve a layered, faux or single color look in a lot less time than acid stains. When not being utilized in a grinding and polishing type of application, etching is required prior to application to open pores of the concrete. When layering stain, apply lighter colors first. After all dye stain has been applied, use water to remove residue. As a final step, water-based or solvent-based sealers must be applied as topcoats.

FEATURES & BENEFITS

- The colors can be inter-mixed to achieve even more colors
- Can be used along with integral and color hardeners
- Dry to touch in 20-40 minutes
- Zero VOC's
- No neutralizing required
- Compact – very little shelf space
- Ideal for polished concrete or existing substrates

RECOMMENDED USES:

- Retail stores and malls
- Interior floors
- Garage floors

PRODUCT INFORMATION:

Description	SKU#	UPC#	SMIS #	Pack	Description	SKU#	UPC#	SMIS #	Pack
Spanish Dagger	41.105001-99	035777329115	650923717	4	Ranch Hand Brown	41.105009-99	035777329344	650923816	4
Reno Gold	41.105002-99	035777329139	650923733	4	Cowboy Hat	41.105010-99	035777329474	650923907	4
Saddle Brown	41.105003-99	035777329146	650923741	4	Vegas Light	41.105011-99	035777329382	650923832	4
Prickly Cactus	41.105004-99	035777329160	650923758	4	Red Rock	41.105012-99	035777329399	650923840	4
Salsa Red	41.105005-99	035777329467	650923899	4	Adobe Red	41.105013-99	035777329405	650923857	4
Oasis	41.105006-99	035777329191	650923774	4	Stagecoach Brown	41.105014-99	035777329456	650923865	4
Canyon	41.105007-99	035777329214	650923782	4	Desert Orange	41.105015-99	035777329443	650923873	4
Tortoise Shell	41.105008-99	035777329238	650923808	4	Rattler's Brown	41.105016-99	035777329450	650923881	4



COVERAGE & DRYING TIME:

* Coverage: 300-400 sq./ft. per gal.

* Coverage will vary depending on the porosity of the substrate

Drying time:

Touch: 30 minute

AVAILABLE COLORS

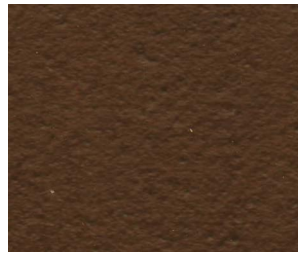
Additional colors can be achieved by mixing the colors below. These colors are a representation. Actual color will vary due to the concrete finishing method (how smooth or porous the surface is), producing a mottling or distressed appearance.



Spanish Dagger



Reno Gold



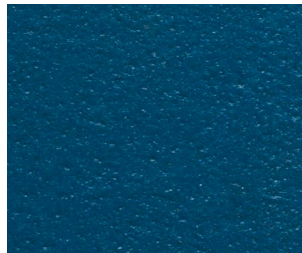
Saddle Brown



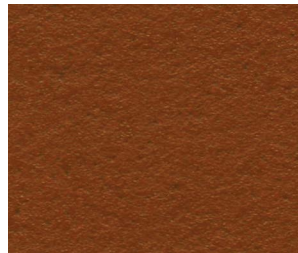
Prickly Cactus



Salsa Red



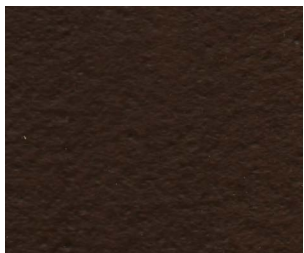
Oasis



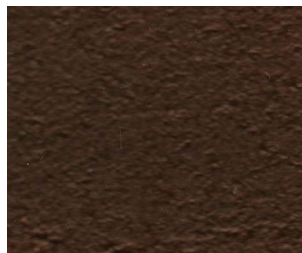
Canyon



Tortoise Shell



Ranch Hand Brown



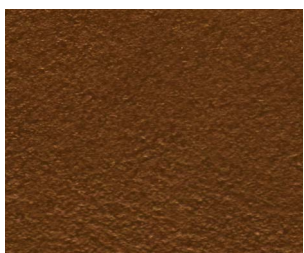
Cowboy Hat



Vegas Light



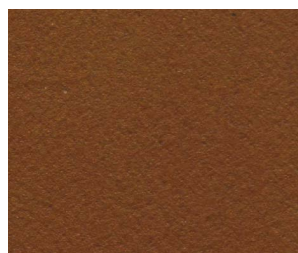
Red Rock



Adobe Red



Stagecoach Brown



Desert Orange



Rattler's Brown