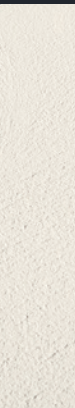
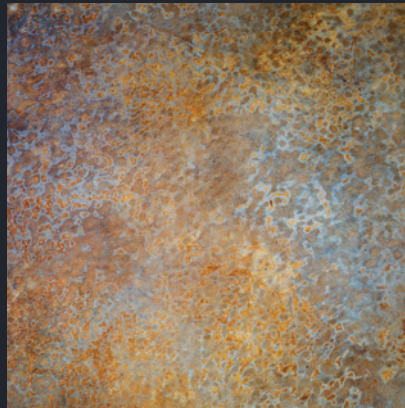




BEAUTIFUL CHOICES FOR MODERN CONCRETE.



HCCONCRETE.COM

PRODUCT GUIDE



Nobody knows concrete like us.

At H&C®, we have a single-minded focus on all things concrete. Since 1929, we've been passionate about creating products that are made with premium materials, utilize the latest technologies and expand the possibilities of everything concrete. Beautiful. Protective. Traditional. Innovative. Stains. Sealers. Tints. Wet and Natural looks and more. Our diverse and inspiring product line covers every concrete surface need imaginable, and our superb service and support put us in a class of our own.



Contents

Steps to Success

Preparing your surface	4
ConcreteReady®	6

Solid Color Concrete Coatings

How to choose	8
Heavy Shield®	9
ColorTop™	10
Cool Feel®	11
Acryla-Deck®	12
Shield-Crete® Garage Floor System	12

Clears

How to choose	11
ClariShield®	14
Hydro-Defend®	15

PRO SERIES

Decorative Concrete Stains

How to choose	32
Infusion® Semi-Transparent Stain.....	34
Infusion Acetone Dye Stain.....	36
Infusion Reactive Stain.....	38
Infusion Industrial Floor Finish.....	40
Shield-Crete XL Garage Floor System.....	41
Metallic Flooring System	42

High-Performance Clears

How to choose	46
Water-Based Polyurethane 2-Part Clear	48
100% Solids Self-Leveling Epoxy 2-Part Clear.....	49
Urethane Paver Sealer	50
High-Performance Industrial Clear.....	51
Hydro-Defend Siloxane HB-150.....	52

Dura-Top® Resurfacers

How to choose	54
Micro-Topping	56
Broom Finish.....	56
Fine Texture	57
Florideck	57
Ultima-Crete	57
Instant & Heavy Texture	58
Dual-Component Texture.....	59
Stampable Overlay	59
Concrete Resurfacers Color Packs.....	60

Polishers & Dustproofers

Cure and Seal	62
Endurapolish™ Clear Liquid Hardener & Densifier	63
Endurapolish Hi-Gloss Lithium Finish	63



Prep Steps for Beautiful Results.

Following proper surface preparation guidelines allows H&C® coatings to bond properly to enhance lasting protection.

Remember to check the label for product-specific application instructions before you apply your coating.

1 Clean.

First, clear the area to be coated. All surfaces must be clean, dry and free of grease, oil, paint and sealers. Remove oil and grease spots with a cleaner degreaser. We recommend **H&C ConcreteReady® Cleaner Degreaser**.

Sprinkle solution onto surface in 10'x10' sections and allow to penetrate for 5-6 minutes. Scrub the area with a stiff bristle broom while rinsing with a garden hose.

Make sure to rinse the concrete surface thoroughly and allow all surfaces to dry at least 24 hours before sealing.

The concrete surface should be porous and able to absorb water. This indicates that the stain or sealer will properly adhere to the concrete surface.



2 Etch.

If the water does not absorb rapidly then the concrete is not porous. This will require either an acid etch using an etching solution or some mechanical means of abrasion. H&C ConcreteReady Phosphoric Etching Solution opens the pores of bare concrete so H&C concrete stains and sealers can bond properly with the substrate.

Apply the etching solution from a plastic sprinkling can. Sprinkle evenly on the concrete. Chemical reaction (foaming and fizzing) will occur. Agitate with a stiff broom for 10 minutes or until bubbling stops. Triple rinse and allow to dry completely. Inspect the surface to ensure that cleaning and etching were successful.

The surface should feel like 120-grit sandpaper, or rougher, and be free of all dirt and concrete dust. If you fail to achieve the proper profile, it may be necessary to repeat the process and etch again. After cleaning and etching, it is important to wait 24 hours before applying H&C stains or sealers.



For even more detailed instructions or technical assistance, please visit our website at hccconcrete.com

3 Pre-coating repairs.

Occasionally, low spots and spalled concrete on vertical or horizontal substrates need to be patched or repaired. **H&C® Concrete Single-Component Quick Patch and Repair** is a fast and easy-to-use patching compound that provides a strong bond and properly preps concrete surfaces for coating.



Pick quality tools and get rolling.

Once you've finished prepping your surface, it's application time.

Premium tools yield premium results and H&C recommends Purdy® brushes and Contractor Series rollers for professional finish results.



ConcreteReady®

CONCENTRATED CLEANER DEGREASER



REMOVES GREASE & OIL STAINS.

ConcreteReady Concentrated Cleaner Degreaser increases any coating's ability to bond with the surface. This heavy-duty cleaner removes even tough stains such as antifreeze and brake or transmission fluid.



Prepares surface
for staining or sealing



Increases penetration
of H&C® coatings

Commonly used on:

- Concrete floors
- Driveways
- Patios
- Walkways
- Pool decks
- Masonry
- Walls
- Pavers

Coverage*:

100 sq. ft. per gallon at 50/50 dilution

Drying time:

Before etching 2-4 hours
Before staining/sealing 18-24 hours



Description	SKU#	UPC#	SMIS#	Pack
1/2 Gallon	50.170015-15	035777230053	650712318	4

PHOSPHORIC ETCHING SOLUTION



PREPS BARE CONCRETE.

ConcreteReady Phosphoric Etching Solution is a phosphoric acid-based solution that opens the pores of the concrete surface so H&C stains and sealers can bond properly.



Easy to use
sprinkle on, hose off



Biodegradable
will not harm vegetation

Commonly used on:

- Concrete floors
- Driveways
- Patios
- Walkways
- Pool decks
- Masonry
- Walls
- Pavers

Coverage*:

100-150 sq. ft. per gallon

Drying time:

The finished surface should completely dry and have a texture that feels like 120-grit sandpaper.



Description	SKU#	UPC#	SMIS#	Pack
1 Gallon	50.160004-16	035777230046	650712300	2

*Coverage will vary depending on the porosity and texture of the substrate.

SINGLE-COMPONENT QUICK PATCH AND REPAIR



QUICKLY RESTORES DAMAGED CONCRETE.

ConcreteReady® Single-Component Quick Patch and Repair is a cement-based patching compound that creates workable, no-slump patches on above- or below-grade concrete surfaces.



Quick and easy application
final setup time is 15-30 minutes



Produces a bond
stronger than the surrounding concrete

Commonly used on:

- Driveways
- Garage floors
- Patios
- Walkways
- Pool decks
- Basement floors
- Steps
- Sidewalks

Coverage:

5 pounds will equal approximately .045 cubic feet, or 1.2 sq. ft. at 1/2" depth. Maximum thickness is approximately 1".

Drying time:

Set time 15-30 minutes
Stain/seal 1 hour



Description	SKU#	UPC#	SMIS#	Pack
5 lbs. / 1 Gallon Bucket	60.100709-99	035777230060	650712326	4

SharkGrip®

SLIP-RESISTANT ADDITIVE



ADDS TRACTION FOR SLIP RESISTANCE.

SharkGrip easily stirs into most oil-based and water-based stains and sealers. Its low-density formula stays well suspended in coatings for easy application.



Long wearing
and comfortable to walk on



Will not alter color
of the coating

Commonly used on:

- Inclined surfaces
- Driveways
- Garages
- Steps
- Patios
- Pool decks

Coverage:

One 3.2 oz. container per one gallon of H&C® Concrete Stain or Sealer.



Steps: Gray Horizons HC140

Description	SKU#	UPC#	SMIS#	Pack
3.2 oz	50.155004-99	035777230015	650712276	12
16 oz.	50.155005-99	035777230022	650712284	6
19 lbs.	50.155008-99	035777230039	650712292	1

Solid Color Stains

HOW TO CHOOSE

H&C® makes finding the perfect solid color stain easy by offering you a wide selection of product types and a great range of color options.

Start by using the chart below to match your surface type and conditions. Then check the pages ahead for even more information that will help you finalize your choice.



	Heavy Shield® Water Based	ColorTop™ Water Based	ColorTop Solvent Based
Sheen	Semi-Gloss	Satin	Semi-Gloss
Recommended Surface	High to Medium Traffic; Horizontal Surfaces	Medium to Low Traffic; Horizontal and Vertical Surfaces	Medium to Low Traffic; Horizontal and Vertical Surfaces
Suitable for Vehicular Traffic	Best	Not Recommended	Good
Use Over Previous Coating	Only Water Based	Only Water Based	Only Solvent Based
Tintable	All Colors	All Colors	Variety of Tintable Colors + Packaged Colors
PROJECT RECOMMENDATION:			
Concrete Driveways	Excellent	Not Recommended	Very Good
Walkways and Breezeways	Excellent	Very Good	Very Good
Patios and Lanais	Excellent	Excellent	Very Good
Concrete, Block or Brick	Excellent	Excellent	Excellent
Stucco Walls	Not Recommended	Excellent	Not Recommended
Basements	Very Good	Excellent	Not Recommended
Laundry Rooms	Very Good	Excellent	Not Recommended
Mechanical Rooms	Excellent	Good	Good
Swimming Pool Decks	Very Good	Good	Good

FORMULA GUIDE

Selecting the right formula depends on your project type so consider these basics.

WATER BASED

Low odor, water-based formulas are great for interior and exterior surfaces and offer easy cleanup with soap and water. They're a great choice if you're staining bare concrete and masonry surfaces or existing water-based coatings.

SOLVENT BASED

Solvent-based formulas are excellent for recoating and durability. They're also a great choice if you're working with bare concrete and masonry surfaces.



**Reduces
Surface
Temperature***

Cool Feel® Water Based

Flat

Medium to Low Traffic;
Pool Decks,
Patios and Walkways

Not Recommended

Only Water Based

Variety of Tintable Colors

Not Recommended

Very Good

Excellent

Not Recommended

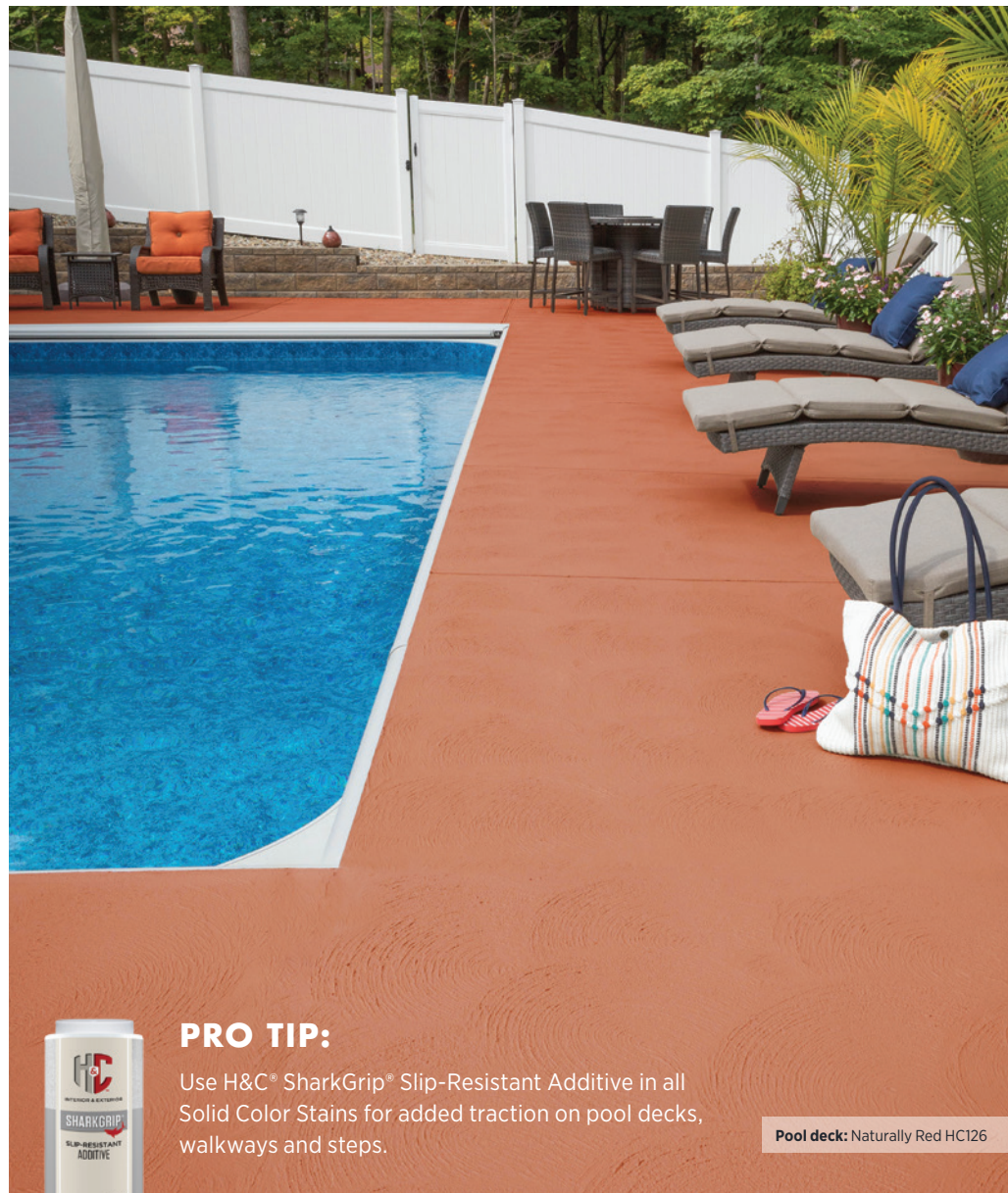
Not Recommended

Not Recommended

Not Recommended

Not Recommended

Excellent



PRO TIP:

Use H&C® SharkGrip® Slip-Resistant Additive in all Solid Color Stains for added traction on pool decks, walkways and steps.

Pool deck: Naturally Red HC126



**Add curb appeal with
lasting color.**

Driveway: Sandstone HC157
Accent: Cemented Deal HC141

Heavy Shield®

**WATER-BASED SOLID COLOR
CONCRETE & DRIVEWAY ENAMEL/STAIN**
SEMI-GLOSS FINISH



OUR BEST SOLID COLOR CONCRETE STAIN

**for withstanding vehicular traffic, tire marking
and hot-tire pickup on high-traffic surfaces.**

H&C® Heavy Shield provides a durable finish for excellent abrasion resistance that extends the life of concrete and masonry surfaces. Can be applied to previously painted surfaces with proper preparation.



Resists household chemical stains
for long-lasting beauty and protection



Withstands vehicular traffic,
tire marking and hot-tire pickup



Water-based formula
for easy soap & water cleanup



Tintable to 100s of Sherwin-Williams colors

Commonly used on:

- Concrete driveways
- Patios, lanais and walkways
- Concrete block or brick
- Parking garages
- Mechanical rooms
- Athletic courts
- Other high-traffic areas

Coverage*	sq. ft./gal
Concrete floors	200-300
Porous concrete	150-250
Concrete block	100-150
Split-faced block	75-125
Fluted block	50-100
Brick (clay)	100-150

Drying time

Touch	30 minutes
Recoat	2 hours
Light foot traffic	2 hours
Heavy traffic	48 hours
Full cure	7-14 days

VOC compliance

see page 64 for compliance map



Description	SKU#	UPC#	SMIS#	Pack
1 Gallon—Extra White Tint Base	35.100214-16	035777848784	650990146	4
5 Gallon— Extra White Tint Base	35.100215-20	035777848814	650990260	1
53-Gallon Drum—Extra White Tint Base**	35.100218-27	035777849286	650990740	1
1 Gallon—Deep Tint Base	35.100314-16	035777849309	650990757	4
5 Gallon—Deep Tint Base	35.100315-20	035777849316	650990781	1
53-Gallon Drum—Deep Tint Base**	35.100318-27	035777849323	650990799	1
1 Gallon—Ultra-Deep Tint Base	35.100414-16	035777849330	650990807	4
5 Gallon—Ultra-Deep Tint Base	35.100415-20	035777849347	650990815	1
53-Gallon Drum—Ultra-Deep Tint Base**	35.100418-27	035777849354	650990823	1

*Coverage will vary depending on the porosity and texture of the substrate.

**Made to order.

ColorTop™

WATER-BASED SOLID COLOR CONCRETE STAIN

SATIN FINISH



LONG-LASTING, DURABLE DECORATIVE FINISH.

H&C® ColorTop Water-Based Solid Color Concrete Stain provides a lasting decorative finish to interior or exterior concrete and masonry surfaces. Fortified with silicone, this easy-to-apply solid color stain comes in three tint base options.

Available in a variety of tintable colors—see page 18.



Decorates, seals and protects
concrete and masonry surfaces



Resists damage
from salts, acids, alkalis, water, mildew, UV rays,
oil and wet or dry abrasion



Water-based formula
for easy soap & water cleanup



Floor base: Hint of Gray HC156
Stencil: Muddy Gray HC172

Commonly used on:

- Patios, lanais and walkways
- Basement floors
- Laundry room floors
- Stadium supports, bridges and more
- Parking garages
- Athletic courts
- Precast concrete and tilt-up concrete
- Block

Coverage*	sq. ft./gal
Concrete floors	200-300
Porous concrete	150-250
Concrete block	100-150
Split-faced block	75-125
Fluted block	50-100
Brick (clay)	100-150
Asphalt	200-250

Drying time @ 77 °F, 50% RH: temperature and humidity dependent

Touch	30 minutes
Recoat	2 hours
Light foot traffic	2 hours
Heavy traffic	72-96 hours
Full cure	7-14 days

VOC compliance

see page 64 for compliance map



Description	SKU#	UPC#	SMIS#	Pack
1 Gallon—Extra White Tint Base	20.101214-16	035777228876	650711450	4
5 Gallon—Extra White Tint Base	20.101215-20	035777228883	650711468	1
53-Gallon Drum — Extra White Tint Base**	20.101215-27	035777859841	651003972	1
1 Gallon—Deep Tint Base	20.102214-16	035777229057	650711633	4
5 Gallon—Deep Tint Base	20.102215-20	035777229064	650711641	1
1 Gallon—Ultra-Deep Tint Base	20.103214-16	035777229118	650711690	4
5 Gallon—Ultra-Deep Tint Base	20.103215-20	035777229125	650711708	1
1 Gallon—Black	20.101224-16	035777228890	650711476	4
5 Gallon —Bombay	20.101255-20	035777228920	650711500	1
5 Gallon—Pearl Gray	20.101315-20	035777228968	650711542	1

*Coverage will vary depending on the porosity and texture of the substrate.

**Made to order.

ColorTop™

WATER-BASED SOLID COLOR CONCRETE STAIN 50
SATIN FINISH



LOW-ODOR FORMULA FOR INTERIOR AND EXTERIOR JOBS.

Bonds to concrete and forms a tough shield that doesn't fade, peel or flake like paint. Available in a variety of tintable colors, this easy-to-apply concrete stain is ideal for high-pH* surfaces and is nationally compliant.

Available in a variety of tintable colors—see page 18.



Decorates, seals and protects
concrete and masonry surfaces



Resists damage
from salts, acids, alkalis, water, mildew, UV rays,
oil and wet or dry abrasion



Water-based formula
for easy soap & water cleanup



Low-odor
for interior or exterior use



Floor: Sandstone HC157

Commonly used on:

- Patios, lanais and walkways
- Concrete block
- Stucco walls
- Basement floors
- Laundry room floors

Coverage**	sq. ft./gal
Concrete floors	300-400
Porous concrete	200-300
Concrete block	100-150
Split-faced block	75-125
Fluted block	50-100
Brick (clay)	100-150
Asphalt	200-300

Drying time @ 77 °F, 50% RH: temperature and humidity dependent

Touch	1 hour
Recoat	4 hours
Light foot traffic	24 hours
Heavy traffic	48 hours
Full cure	7-14 days

VOC compliance

see page 64 for compliance map



Description	SKU#	UPC#	SMIS#	Pack
1 Gallon—Extra White Tint Base	20.104414-16	035777229163	650711740	4
5 Gallon—Extra White Tint Base	20.104415-20	035777229194	650711757	1
1 Gallon—Deep Tint Base	20.104514-16	035777229187	650711765	4
5 Gallon—Deep Tint Base	20.104515-20	035777229217	650711773	1
1 Gallon—Ultra-Deep Tint Base	20.104614-16	035777229200	650711781	4
5 Gallon—Ultra-Deep Tint Base	20.104615-20	035777229231	650711799	1

*High pH is over 10.

**Coverage will vary depending on the porosity and texture of the substrate.

ColorTop™

SOLVENT-BASED SOLID COLOR CONCRETE SEALER

SEMI-GLOSS FINISH



SILICONE FORTIFIED, EASY-TO-APPLY, DECORATIVE COLOR STAIN

This opaque, waterproofing sealer is formulated to bond with exterior bare concrete and masonry surfaces. It provides a long-lasting, decorative finish.

Available in a variety of tintable colors—see page 18.



Decorates, seals and protects

bare concrete exterior horizontal or vertical surfaces



Resists damage

from salts, acids, alkalis, water, mildew, UV rays, oil and abrasion



Silicone acrylic formulation

for excellent durability & adhesion



Suitable for vehicular traffic

Commonly used on:

- Driveways
- Patios and walkways
- Garage floors
- Concrete athletic courts
- Parking garages
- Block and stucco exterior walls
- Stadium supports, bridges and more

Coverage*	sq. ft./gal
Concrete floors	200-250
Porous concrete	150-200
Concrete block	125-150
Split-faced block	100-125
Fluted block	75-100
Brick (clay)	100-150

Drying time @ 77 °F, 50% RH: temperature and humidity dependent

Touch	15 minutes
Recoat	4 hours
Light foot traffic	4 hours
Heavy traffic	72-96 hours
Full cure	7-14 days

VOC compliance

see page 64 for compliance map



Description	SKU#	UPC#	SMIS#	Pack	Description	SKU#	UPC#	SMIS#	Pack
1 Gallon—Extra White Tint Base	10.114014-16	035777228784	650711419	4	1 Gallon—Gull Gray	10.100084-16	035777228630	650711278	4
5 Gallon—Extra White Tint Base	10.114015-20	035777228821	650711427	1	5 Gallon—Gull Gray	10.100085-20	035777228647	650711286	1
1 Gallon—Deep Tint Base	10.116014-16	035777228838	650711435	4	1 Gallon—Patio Green	10.100104-16	035777228654	650711294	4
5 Gallon—Deep Tint Base	10.116015-20	035777228845	650711443	1	5 Gallon—Patio Green	10.100105-20	035777228661	650711302	1
1 Gallon—Black	10.100024-16	035777230077	650711179	4	1 Gallon—Pearl Gray	10.100114-16	035777228678	650711310	4
5 Gallon—Black	10.100025-20	035777230084	650711187	1	5 Gallon—Pearl Gray	10.100115-20	035777228685	650711328	1
1 Gallon—Autumn Brown	10.100034-16	035777228548	650711195	4	1 Gallon—Sandstone	10.100124-16	035777228692	650711336	4
5 Gallon—Autumn Brown	10.100035-20	035777228555	650711203	1	5 Gallon—Sandstone	10.100125-20	035777228708	650711344	1
1 Gallon—Bombay	10.100054-16	035777228562	650711211	4	1 Gallon—Silver Gray	10.100144-16	035777228715	650711351	4
5 Gallon—Bombay	10.100055-20	035777228579	650711229	1	5 Gallon—Silver Gray	10.100145-20	035777228722	650711369	1
1 Gallon—Brick Red	10.100064-16	035777228586	650711237	4	1 Gallon—Terracotta	10.100154-16	035777228739	650711377	4
5 Gallon—Brick Red	10.100065-20	035777228593	650711245	1	5 Gallon—Terracotta	10.100155-20	035777228753	650711385	1
1 Gallon—Charcoal	10.100074-16	035777228616	650711252	4	1 Gallon—Tile Red	10.100164-16	035777228760	650711393	4
5 Gallon—Charcoal	10.100075-20	035777228623	650711260	1	5 Gallon—Tile Red	10.100165-20	035777228777	650711401	1

*Coverage will vary depending on the porosity and texture of the substrate.

ColorTop™

SOLVENT-BASED SOLID COLOR CONCRETE SEALER 250

SATIN FINISH



CREATES A TOUGH BONDING SHIELD THAT WON'T FADE OR PEEL.

This solvent-based sealer provides a durable finish that extends the life of concrete and masonry. It penetrates deeply into the surface to form a tough shield that won't peel, fade or flake over time.

Available in a variety of tintable colors—see page 18.



Decorates, seals and protects

bare, unsealed concrete block, brick, stucco and other masonry surfaces



Satin finish

preserves delicate architectural details



Suitable for vehicular traffic

Commonly used on:

- Driveways
- Patios and walkways
- Garage floors
- Concrete athletic courts
- Parking garages
- Block and stucco exterior walls
- Stadium supports, bridges and more

Coverage*	sq. ft./gal
Concrete floors	200-250
Porous concrete	150-200
Concrete block	125-150
Split-faced block	100-125
Fluted block	75-100
Brick (clay)	100-150

Drying time @ 77 °F, 50% RH: temperature and humidity dependent

Touch	15 minutes
Recoat	2-4 hours
Light foot traffic	1 hour
Heavy traffic	72-96 hours
Full cure	7-14 days

VOC compliance

see page 64 for compliance map



Description	SKU#	UPC#	SMIS#	Pack
1 Gallon—White Tint Base	30.114014-16	035777229439	650711997	4
5 Gallon—White Tint Base	30.114015-20	035777229446	650712003	1
1 Gallon—Deep Tint Base	30.116014-16	035777229187	650712011	4
5 Gallon—Deep Tint Base	30.116015-20	035777229477	650712029	1
5 Gallon—Black**	30.101405-20	035777229309	650711864	1

*Coverage will vary depending on the porosity and texture of the substrate.

**Special order only.

Cool Feel®

**WATER-BASED ACRYLIC SOLID COLOR
HI-BUILD DECK & WALKWAY COATING**
FLAT FINISH



COOLER CONCRETE IS AS SIMPLE AS COOL FEEL.

Cool Feel with Comfort Step Technology® reduces the temperature of concrete surfaces exposed to UV rays, making walking on your concrete surfaces more comfortable for people and pets.*

Available in a variety of tintable colors—see page 18.



Comfort Step Technology

makes concrete pool decks, walkways and patios more comfortable to walk on by reducing the surface temperature*



Self-crosslinking acrylic

creates a durable, protective finish



Advanced stain resistance

minimizes cleanup from footsteps, dirt and debris



Resistant to pool chemicals

and household chemicals for long-lasting beauty and protection



UV-resistant shield

helps reduce fading and provides superior color protection



Water-based formula

for easy soap & water cleanup

Commonly used on:

- Pool decks
- Patios & lanais
- Walkways
- Concrete decks
- Concrete surfaces

Coverage**	sq. ft./gal
Concrete floors	150-200
Porous concrete	150-250
Concrete block	100-150
Split-faced block	75-125
Fluted block	50-100
Brick (clay)	100-150
Asphalt	200-250

Drying time

Touch	30 minutes
Recoat	2 hours
Light foot traffic	2 hours
Heavy traffic	72-96 hours
Full cure	7-14 days

VOC compliance

see page 64 for compliance map



PROVEN TEMPERATURE REDUCTION

Over 30 colors were tested in our research lab under extreme heat conditions for over two hours and had an average temperature reduction of 20 degrees!*

How it works:

Microspheres reflect and dissipate heat from the sun on concrete surfaces.

Unique color technology enables the product to be tinted into a variety of colors.

Description	SKU#	UPC#	SMIS#	Pack
1 Gallon—Extra White Tint Base	25.101414-16	035777880210	651042921	4
5 Gallon—Extra White Tint Base	25.101415-20	035777880258	651043036	1
1 Gallon—Deep Tint Base	25.101514-16	035777880296	651043085	4
5 Gallon—Deep Tint Base	25.101515-20	035777880289	651043077	1

*Reduces surface temperature when compared to bare concrete. Amount of temperature reduction may differ due to: color choice, ambient temperature, time of day and the amount of direct sunlight on the surface.

**Coverage will vary depending on the porosity and texture of the substrate.

Acryla-Deck®

**WATER-BASED SOLID COLOR
100% ACRYLIC DECK COATING**
SATIN FINISH

LASTING BEAUTY, INSIDE OR OUT.

Give your concrete decks and floors a long life with Acryla-Deck Water-Based Solid Color 100% Acrylic Deck Coating, a high-satin-sheen floor stain designed for interior and exterior residential, architectural, commercial and light-industrial spaces.

Available in a variety of tintable colors—see page 18.



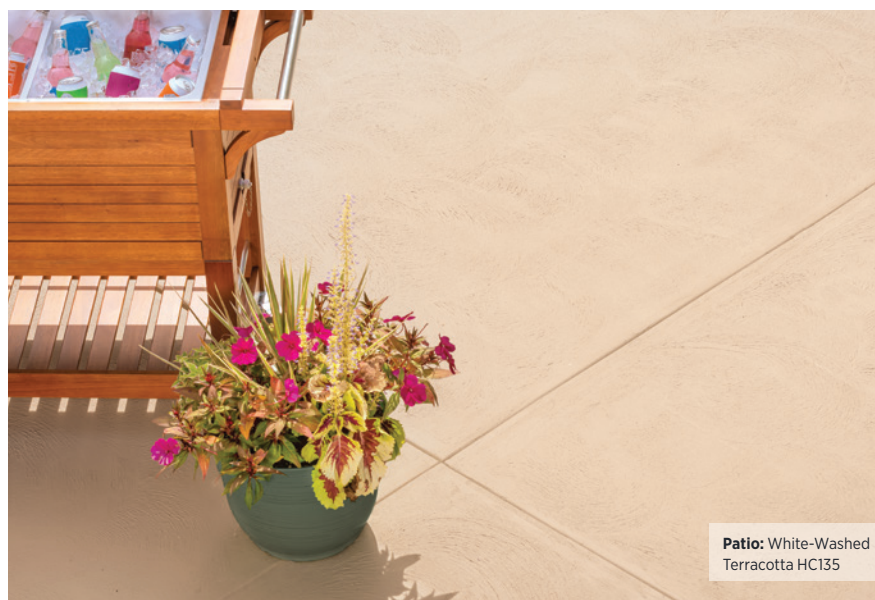
Excellent durability & color retention
resists chalking and blistering



Water-based formula
for easy soap & water cleanup



Highly resistant to pool chemicals
and household chemicals for long-lasting beauty and protection



Commonly used on:

- Pool decks
- Patios & lanais
- Walkways
- Concrete decks
- Concrete floors

Coverage*	sq. ft./gal
Concrete floors	200-300
Porous concrete	150-250
Concrete block	100-150
Split-faced block	75-125
Fluted block	50-100
Brick (clay)	100-150
Asphalt	200-250
Wood	250-350

Drying time

Touch	1 hour
Recoat	4 hours
Light foot traffic	2 hours
Heavy traffic	72-96 hours
Full cure	7-14 days

VOC compliance

see page 64 for compliance map

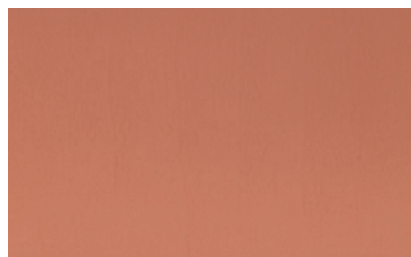


Description	SKU#	UPC#	SMIS#	Pack
1 Gallon—Extra White Tint Base	25.100214-16	035777311936	650902323	4
5 Gallon—Extra White Tint Base	25.100215-20	035777311943	650902331	1
1 Gallon—Deep Tint Base	25.100314-16	035777311967	650902356	4
5 Gallon—Deep Tint Base	25.100315-20	035777318126	650910565	1

*Coverage will vary depending on the porosity and texture of the substrate.

On-trend colors for commercial and residential spaces.

Color palette is tintable to Heavy Shield®, ColorTop™, Cool Feel® and Acryla-Deck®.



Naturally Red HC126



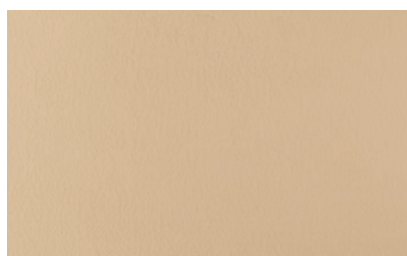
White-Washed Terracotta HC135



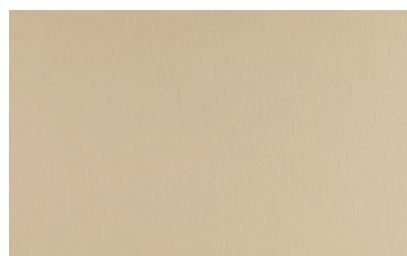
Aztec Sand HC136



Terra Cotta HC167



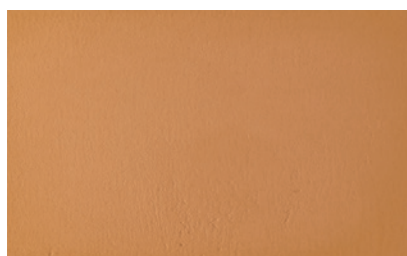
Neutral Balance Tan HC125



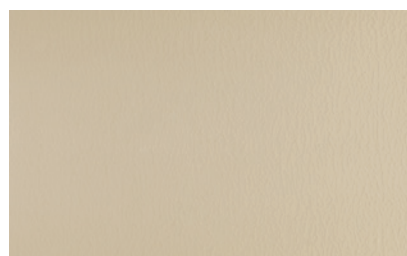
Bombay HC133



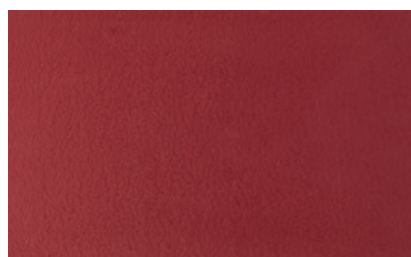
Red Terrazzo Tile HC102



Terracotta Orange HC159



Cemented Deal HC141



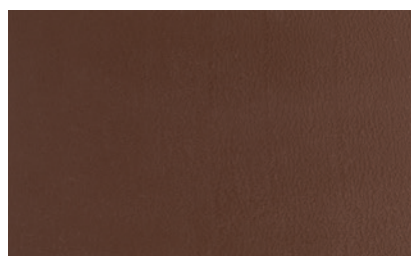
Tile Red* HC110



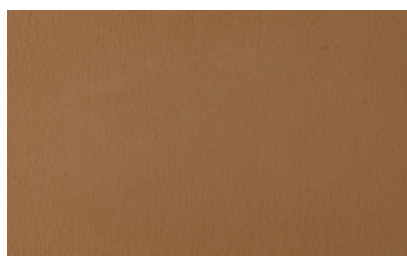
Silk Chocolate HC117



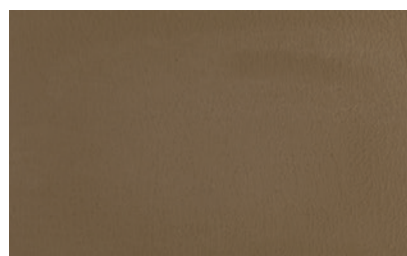
Siberian Haze HC149



Cabernet Brown* HC107



Cedarwood Brown HC103



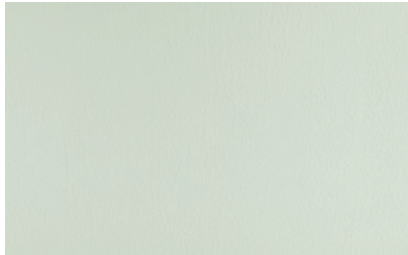
Charred Walnut HC109



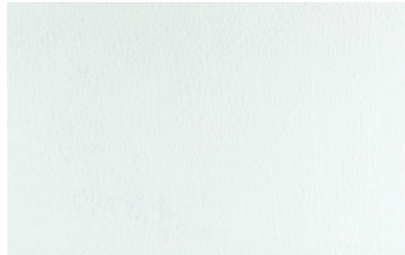
Don't see your perfect color?

H&C® Solid Color Stains can be tinted to 100s of Sherwin-Williams colors.

Pool Deck: Bombay HC133



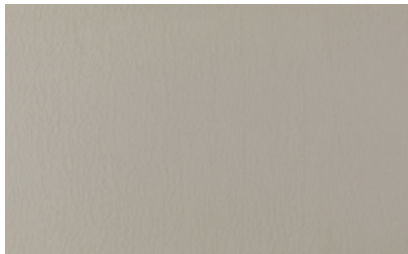
Fall Grass HC145



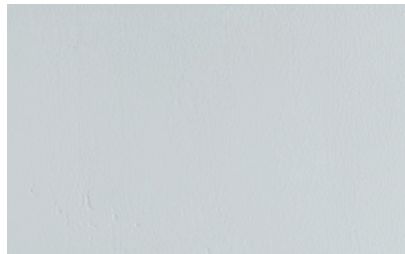
Hint of Gray HC156



Extra White HC148



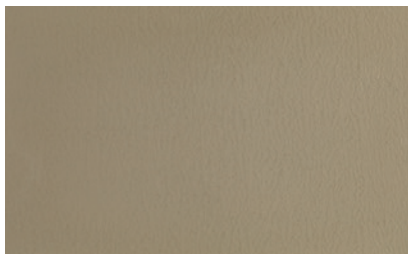
Sandstone HC157



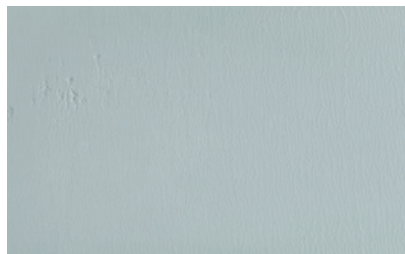
Gray Horizons HC140



Bombay Breeze HC146



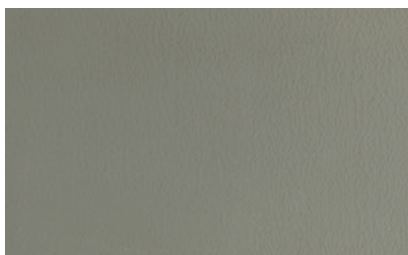
Fresh Concrete HC165



Gull Gray HC132



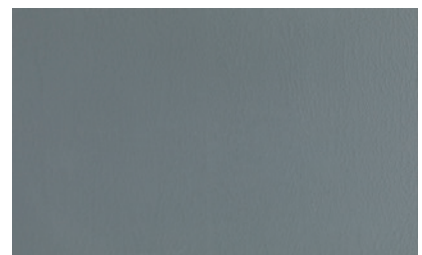
Drive-in Twilight HC155



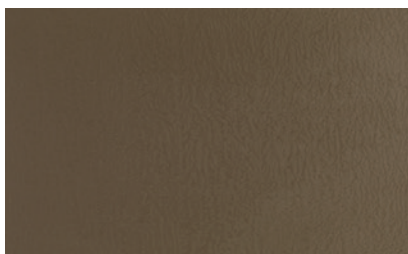
Muddy Gray HC172



Pearl Gray HC164



Silver Gray HC124



Autumn Brown* HC101



Patio Green* HC105



Black* HC108



Floor base: Online SW 7072
Deco-Flakes: Salt & Pepper

**Give garage floors
a showroom finish.**

Shield-Crete®

WATER-BASED GARAGE FLOOR EPOXY
GLOSS FINISH



LONG-LASTING BEAUTY WITH A HARD, DURABLE FINISH.

This two-part epoxy penetrates deeply into concrete, creating a hard, durable surface that resists peeling and hot-tire pickup for long-lasting beauty.

One kit covers 200-250 square feet, or a typical one-car garage, depending on the porosity of the substrate.



Extended application time
for an even finish with no lap marks.



Stops hot-tire pickup
and keeps surface looking new longer.



Resists peeling
for lasting beauty and protection.



Fights oil and chemical stains
to keep color and finish like new.



**Tintable to 1,000+
Sherwin-Williams colors**

For use on:

- Garage floors
- Basement floors
- Storage areas
- Warehouse floors
- Commercial floors

Kit contains:

- Part A Epoxy—1 Gallon
- Part B Hardener—1 Quart
- Cleaner Degreaser—3.2 Oz.
- Stir stick
- Instruction sheet

Coverage*

When properly applied to a typical concrete surface, this kit covers approximately 250 sq. ft.

Drying time @ 77 °F, 50% RH: temperature and humidity dependent

Touch	45 minutes
Light foot traffic	18 hours
Heavy traffic	72 hours
Pot life	5.5 hours
Recoat	6-72 hours
Full cure	7 days

VOC compliance

see page 64 for compliance map



Floor base: Poised Taupe SW 6039
Deco-Flakes: Earthy Mosaic

Description	SKU#	UPC#	SMIS#	Pack
Kit—Extra White Tint Base	20.113000-99	035777913239	651114746	1
Kit—Deep Tint Base	20.114000-99	035777913246	651114753	1
Kit—Ultra Deep Tint Base	20.115000-99	035777913253	651114761	1
Kit—Concrete Gray	20.116000-99	035777913260	651114779	1

*Coverage will vary depending on the porosity and texture of the substrate.

Shield-Crete®

DECO-FLAKES

must be sealed with a clear coat



CREATE A BEAUTIFUL CUSTOM LOOK.

Deco-Flakes are vinyl paint chips that provide a unique decorative finish similar to granite or terrazzo. They also help hide imperfections in the concrete surface and depending on the density of the flake application, create custom flake patterns.



Available in four versatile blends

Coverage (Per 250 sq. ft.)

Light Pattern: 1 package

Medium Pattern: 2 packages

Heavy Pattern: 3-4 packages

Full Pattern: 5-6 packages

Flake Patterns

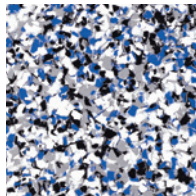
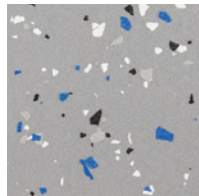
Create custom flake patterns simply by choosing the density of the flakes during application. See below for examples:

Light Pattern

Full Pattern

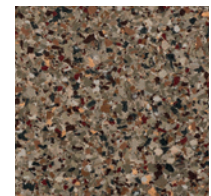
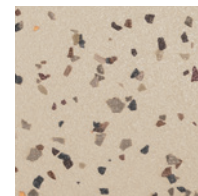
Blue Chip Creek

Shown over
Shield-Crete
packaged color,
Concrete Gray.



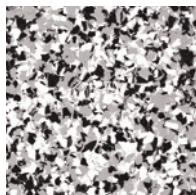
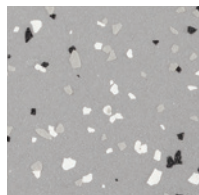
Earthy Mosaic

Shown over
Urban Putty SW 7532



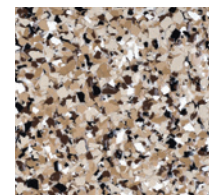
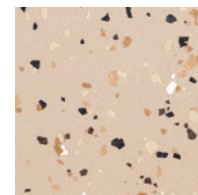
Salt & Pepper

Shown over
Shield-Crete
packaged color,
Concrete Gray.



Pebble Beach

Shown over
Pueblo SW 7711



Don't forget to seal with Shield-Crete Clear Coat!

Description	SKU#	UPC#	SMIS#	Pack
16 oz. Bag Blue Chip Creek	20.105100-99	035777914649	651118176	4
16 oz. Bag Salt & Pepper	20.105200-99	035777914656	651118184	4
16 oz. Bag Earthy Mosaic	20.105300-99	035777914663	651118192	4
16 oz. Bag Pebble Beach	20.105400-99	035777914670	651118200	4
25 lbs. Box Salt & Pepper	20.105500-99	035777914687	651118218	1
25 lbs. Box Pebble Beach	20.105600-99	035777914694	651118226	1

Shield-Crete®

WATER-BASED EPOXY GARAGE CLEAR COAT

GLOSS FINISH



CLEAR PROTECTION TO MAINTAIN SHOWROOM FINISH.

This 2-part clear epoxy adds extra protection and resists common stains so your new garage floor retains its showroom finish. If you'd like extra traction, use the slip-resistant additive. Also, if using Shield-Crete Deco-Flakes, remember after broadcasting them on a freshly coated floor, you must finish with a clear coat to secure them.

One kit covers 200-250 square feet, or a typical one-car garage, depending on the porosity of the substrate.



Extended application time

for an even finish with no lap marks.



Stops hot-tire pickup

and keeps surface looking new longer.



Resists peeling

for lasting beauty and protection.



Fights oil and chemical stains

to keep color and finish like new.



Gloss finish

for added shine

For use on:

- Garage floors
- Basement floors
- Storage areas
- Warehouse floors
- Commercial floors

Kit contains:

- Part A Epoxy—1 Gallon
- Part B Hardener—1 Quart
- Slip-Resistant Additive—2.4 oz.
- Stir stick
- Instruction sheet

Coverage*

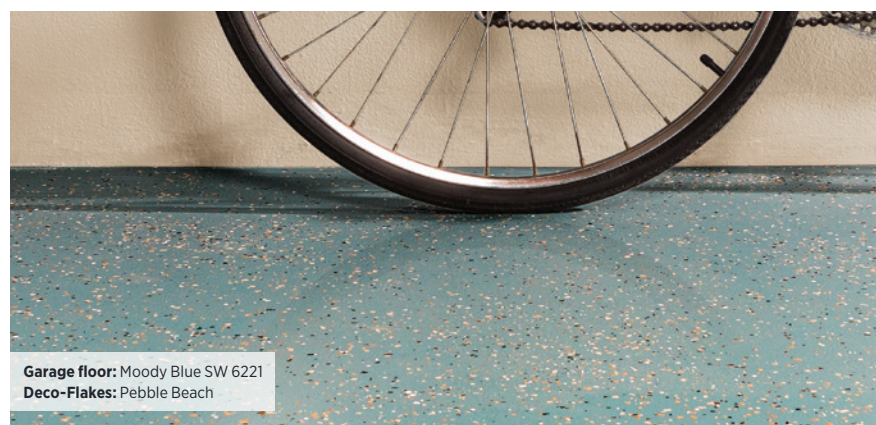
When properly applied to a typical smooth concrete surface, this kit covers approximately 250 sq. ft.

Drying time @ 77 °F, 50% RH: temperature and humidity dependent

Touch	45 minutes
Light foot traffic	18 hours
Heavy traffic	72 hours
Pot life	5.5 hours
Recoat	6-72 hours
Full cure	7 days

VOC compliance

see page 64 for compliance map



Garage floor: Moody Blue SW 6221
Deco-Flakes: Pebble Beach

Description	SKU#	UPC#	SMIS#	Pack
Kit—Clear Coat	20.117000-99	035777913277	651114795	1

*Coverage will vary depending on the porosity and texture of the substrate.

Clears

HOW TO CHOOSE

Natural, wet or glossy? No need to be overwhelmed by so many great choices. We've organized this chart to make the selection process easy for you and your

customers to find the perfect clear for the type of job and final look you're after.



	ClariShield® Water-Based WET LOOK	ClariShield Water-Based NATURAL LOOK
Sheen	High sheen	Low sheen
Recommended Surface	Heavy to Medium Traffic	Heavy to Medium Traffic
Suitable for Vehicular Traffic	Yes	Yes
Use Over Previous Coating	Only Water Based	Only Water Based
PROJECT RECOMMENDATION:		
Concrete Driveways	Very Good	Very Good
Walkways	Excellent	Excellent
Patios and Lanais	Excellent	Excellent
Concrete, Block or Brick	Excellent	Excellent
Garage Floors	Not Recommended	Not Recommended
Basements	Excellent	Excellent
Laundry Rooms	Excellent	Excellent
Mechanical Rooms	Excellent	Excellent
Swimming Pool Decks	Excellent	Excellent

FORMULA GUIDE

Selecting the right formula will depend on the location of your job and the look you're trying to achieve.

WATER BASED

Water-based formulas provide excellent protection and offer easy soap and water cleanup. Great for both interior and exterior applications.

SOLVENT BASED

Solvent-based formulas add depth of color and enhance appearance of concrete and pavers. It can be quick drying and durable. Solvent-based clears are formulated for exterior applications.



ClariShield® Solvent-Based WET LOOK	ClariShield Solvent-Based NATURAL LOOK	ClariShield Oil-Based GLOSS FINISH
High sheen	Low sheen	High sheen
Heavy Traffic	Heavy Traffic	Heavy to Medium Traffic
Yes	Yes	Yes
Only Solvent Based	Only Solvent Based	Solvent Based
PROJECT RECOMMENDATION:		
Excellent	Excellent	Excellent
Excellent	Excellent	Very Good
Excellent	Excellent	Very Good
Excellent	Excellent	Excellent
Good	Good	Not Recommended
Not Recommended	Not Recommended	Not Recommended
Not Recommended	Not Recommended	Not Recommended
Not Recommended	Not Recommended	Not Recommended
Excellent	Excellent	Good

Hydro-Defend® Water-Based Waterproofing
No Sheen
Heavy to Medium Traffic
Yes
Only Water Based
Excellent
Excellent
Excellent
Excellent
Very Good
Excellent
Excellent
Excellent
Excellent

ClariShield®

WATER-BASED CLEAR CONCRETE SEALERS

WET LOOK & NATURAL LOOK



PROTECTS AND EXTENDS THE LIFE OF CONCRETE.

Low-odor, water-based formula is great for interior & exterior applications and offers easy cleanup with soap and water.

For use over bare concrete and masonry surfaces or existing water-based coatings.



Crystal clear
non-yellowing formula



Durable finish
protects and extends life of concrete



Resists damage
from water, salt, UV rays, oil and chemical stains



Withstands vehicular traffic
not recommended for garage floors



Water-based formula
for easy soap & water cleanup

Commonly used on:

- Pavers
- Driveways
- Patios & walkways
- Decorative stains
- Pool decks
- Brick, block & stucco
- Commercial floors
- Basement floors

Coverage*	sq. ft./gal
Concrete floors	100-200
Porous concrete	100-200
Concrete block	100-150
Previously coated concrete	200-300
Porous decorative block	75-100

Drying time

Touch	1 hour
Recoat	2 hours
Light foot traffic	24 hours
Heavy traffic	72-96 hours

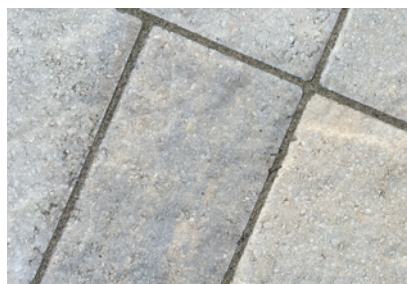
VOC compliance

see page 64 for compliance map



Wet Look

High-shine finish that enhances the look of concrete.



Natural Look

Low-shine finish that maintains original beauty.

Description	SKU#	UPC#	SMIS#	Pack
1 Gallon—Wet Look	50.100204-16	035777229996	650712250	4
5 Gallon—Wet Look	50.100205-20	035777230008	650712268	1
1 Gallon—Natural Look	50.100214-16	035777948514	651201295	4
5 Gallon—Natural Look	50.100215-20	035777948521	651201311	1
53-Gallon Drum—Natural Look**	50.100218-27	035777957189	651222069	1

*Coverage will vary depending on the porosity and texture of the substrate.

**Made to order.

ClariShield®

SOLVENT-BASED CLEAR CONCRETE SEALERS

WET LOOK & NATURAL LOOK



ENHANCES & PROTECTS EXTERIOR CONCRETE.

Solvent-based formula adds depth of color and enhances appearance of concrete and pavers.

For use over bare concrete and masonry surfaces or existing solvent-based coatings.



Crystal clear
non-yellowing formula



Xylene-based formula
offers quick drying and easy recoat



Resists damage
from water, salt, UV rays, oil and chemical stains



Withstands heavy vehicular traffic

Commonly used on:

- Pavers
- Driveways
- Patios & walkways
- Decorative stains
- Pool decks
- Brick, block & stucco

Coverage*	sq. ft./gal
Concrete floors	200-250
Porous concrete	150-250
Concrete block	100-150
Brick (clay)	100-150

Drying time

Touch	1 hour
Recoat	4 hours
Light foot traffic	4 hours
Heavy traffic	72 hours

Please see Product Data Sheet for 250 VOC product.

VOC compliance

see page 64 for compliance map



Wet Look

High-sheen finish that enhances the look of concrete.



Natural Look

Low-sheen finish that maintains original beauty.

Description	SKU#	UPC#	SMIS#	Pack
1 Gallon—Wet Look	50.100104-16	035777943625	651187791	4
5 Gallon—Wet Look	50.100105-20	035777943632	651187809	1
53-Gallon Drum—Wet Look**	50.100108-27	035777956472	651219248	1
1 Gallon—Wet Look 250	50.100124-16	035777229415	650711971	4
5 Gallon—Wet Look 250	50.100125-20	035777229422	650711989	1
1 Gallon—Natural Look	50.100114-16	035777948545	651201337	4
5 Gallon—Natural Look	50.100115-20	035777948552	651201345	1
53-Gallon Drum—Natural Look**	50.100118-27	035777956717	651220410	1

*Coverage will vary depending on the porosity and texture of the substrate.

**Made to order.

ClariShield®

OIL-BASED CLEAR CONCRETE SEALERS

GLOSS FINISH



PENETRATING SEALER THAT ENRICHES COLOR & APPEARANCE.

Oil-based formula adds depth of color with a thin protective film.

For use over bare and previously coated concrete and masonry surfaces.



Crystal clear
non-yellowing formula



Penetrating sealer
can be built to a high gloss with multiple coats



Resists damage
from water, salt, UV rays, oil and chemical stains



Withstands vehicular traffic

Commonly used on:

- Patios & walkways
- Pool decks
- Driveways
- Pavers
- Natural stone
- Chattahoochee stone
- Brick & block

Coverage*	sq. ft./gal
Concrete floors	200-300
Porous concrete	150-250
Concrete block	100-150
Split-faced block	75-125
Fluted block	50-100
Brick (clay)	100-150

Drying time

Touch	30 minutes
Recoat	4 hours
Light foot traffic	24 hours
Heavy traffic	72 hours

VOC compliance

see page 64 for compliance map



Description	SKU#	UPC#	SMIS#	Pack
1 Gallon	50.100304-16	035777229934	650712193	4
5 Gallon	50.100305-20	035777229941	650712201	1

Hydro-Defend®

CLEAR CONCRETE WATERPROOFER

INVISIBLE FINISH



WEATHER-RESISTANT SEALER THAT WON'T ALTER APPEARANCE.

Water-based, siloxane formula penetrates the surface to provide a breathable barrier.

For use over bare concrete and masonry surfaces.



Non-film forming



Protects
against freeze/thaw cycles



Will not alter color or texture



Resists damage
from water, salt, dirt and other contaminants



Commonly used on:

- Driveways
- Patios & walkways
- Pool decks
- Brick & block
- Tilt-up concrete
- Stadium supports

Coverage*	sq. ft./gal
Concrete floors	150-200
Porous concrete	100-150
Split-faced block	50-75
Fluted block	75-100
Brick (clay)	100-150

Drying time

Touch	1 hour
Recoat	5-10 minutes
Light foot traffic	2 hours
Heavy traffic	72 hours

VOC compliance
see page 64 for compliance map



Description	SKU#	UPC#	SMIS#	Pack
1 Gallon	50.154154-16	035777242445	650712359	4
5 Gallon	50.154155-20	035777242452	650712367	1

*Coverage will vary depending on the porosity and texture of the substrate.



Best looking, best working products for Pros.

The world of commercial and residential concrete has experienced incredible growth in the past decade. Innovative product technologies, increased usage opportunities and decorative artisan looks have kept concrete coating professionals on their toes. At H&C®, we're committed to providing you with the best looking and best working products to successfully meet these expanding needs and generate revenue.



Decorative Concrete Stains

How to choose	32
Infusion® Semi-Transparent Stain.....	34
Infusion Acetone Dye Stain.....	36
Infusion Reactive Stain.....	38
Infusion Industrial Floor Finish.....	40
Shield-Crete® XL Garage Floor System	41
Metallic Flooring System	42

High-Performance Clears

How to choose	46
Water-Based Polyurethane 2-Part Clear	48
100% Solids Self-Leveling Epoxy 2-Part Clear	49
Urethane Paver Sealer	50
High-Performance Industrial Clear.....	51
Hydro-Defend® Siloxane HB-150	52

Dura-Top® Resurfacers

How to choose	54
Micro-Topping	56
Broom Finish.....	56
Fine Texture	57
Florideck	57
Ultima-Crete	57
Instant- and Heavy-Texture Concrete	58
Dual-Component Texture.....	59
Stampable Overlay	59
Concrete Resurfacers Color Packs.....	60

Polishers & Dustproofers

Cure and Seal	62
Endurapolish™ Clear Liquid Hardener & Densifier	63
Endurapolish Hi-Gloss Lithium Finish	63

Decorative Concrete Stains

HOW TO CHOOSE

Choosing the right decorative stain depends on your customer's personal preference and vision and the surface type and condition of the job.

At H&C®, we offer a wide range of decorative concrete stains so you'll always find products that work for both of you.



	INFUSION® Semi-Transparent Stain	INFUSION Acetone Dye Stain	INFUSION Reactive Stain
Topcoat with	Solvent or Water Based	Solvent or Water Based	Solvent or Water Based
Recommended Surface	Low to Medium Traffic	Low to Medium Traffic	Medium to High Traffic
Colors	16	16	12
PROJECT RECOMMENDATION:			
Concrete Driveways	Excellent	Not Recommended*	Excellent
Patios and Lanais	Excellent	Not Recommended	Excellent
Walkways	Excellent	Not Recommended	Excellent
Garage Floors	Good	Very Good	Excellent
Interior Commercial Floors	Excellent	Excellent	Excellent
Concrete or Stucco Walls	Excellent	Not Recommended	Excellent
Basements	Excellent	Excellent	Excellent
Laundry Rooms	Excellent	Excellent	Excellent
Pool Decks	Excellent	Not Recommended	Excellent
Athletic Courts	Very Good	Not Recommended	Good



—

**Add protection and a
splash of unexpected color.**

Pool Deck: Infusion® Semi-Transparent Stain in Henna and Pumpkin Spice,
topcoated with ClariShield® Water-Based Clear Sealer in Natural Look

INFUSION®

WATER-BASED

SEMI-TRANSPARENT STAIN



ACHIEVE A LAYERED, FAUX OR SINGLE-COLOR LOOK.

H&C® Infusion® Water-Based Semi-Transparent Decorative Stain lets you achieve a layered, faux or single-color look in less time than acid stains. Proper profiling (etching or grinding) is required prior to application to open the pores of the concrete. When layering stain, apply lighter colors first. To finish and complete the project, the stain must be sealed with an appropriate H&C clear coat.

For interior and exterior use.

- **Water-based formulation easy application and cleanup**
- **UV resistant**
- **Quick turnaround. Recoat or seal in 4-6 hours**
- **No neutralization required**
- **Can be dilute up to 4:1 with water for color variation and increased coverage rates**

Commonly used on:

- Pool decks
- Patios and walkways
- Garages
- Driveways
- Interior floors
- Commercial floors
- Basement floors

Coverage* 150-300 sq. ft./gal.

Drying time @ 77 °F, 50% RH:
temperature and humidity dependent

Touch	1 hour
Light foot traffic	4 hours

VOC compliance

see page 64 for compliance map



Description	SKU#	UPC#	SMIS#	Pack
1 Gallon—Arctic Stone	45.102014-16	035777229491	650712037	2
1 Gallon—Autumn Breeze	45.102114-16	035777229866	650712136	2
1 Gallon—Cardinal Red	45.102094-16	035777229828	650712110	2
1 Gallon—Cocoa Bean	45.102054-16	035777229668	650712078	2
1 Gallon—Cordovan	45.102064-16	035777229699	650712086	2
1 Gallon—Cork	45.102134-16	035777229897	650712151	2
1 Gallon—Dahlia Red	45.102084-16	035777229729	650712102	2
1 Gallon—Dewy Blade	45.102144-16	035777229903	650712169	2
1 Gallon—Espresso	45.102044-16	035777229613	650712060	2
1 Gallon—Gold Leaf	45.102124-16	035777229880	650712144	2
1 Gallon—Henna	45.102074-16	035777229705	650712094	2
1 Gallon—Marina Blue	45.102164-16	035777229927	650712185	2
1 Gallon—Moss	45.102154-16	035777229910	650712177	2
1 Gallon—Obsidian	45.102034-16	035777229514	650712052	2
1 Gallon—Pumpkin Spice	45.102104-16	035777229842	650712128	2
1 Gallon—Tumbled Stone	45.102024-16	035777229507	650712045	2



Patio: Arctic Stone

LEFT SIDE OF SWATCH:
Sealed with
ClariShield® Water-Based Sealer
Wet Look

RIGHT SIDE OF SWATCH:
Sealed with
ClariShield Solvent-Based Sealer
Wet Look

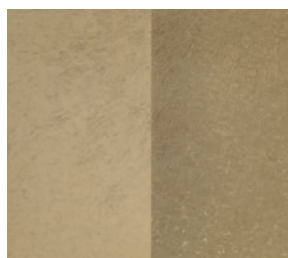
Always test an
inconspicuous area for color.



Henna



Gold Leaf



Cork



Arctic Stone



Dahlia Red



Pumpkin Spice



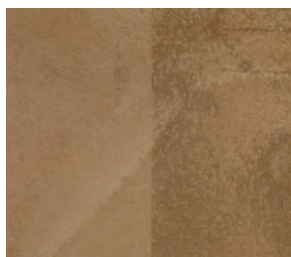
Autumn Breeze



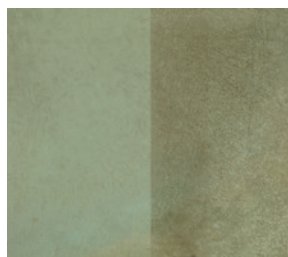
Marina Blue



Cordovan



Espresso



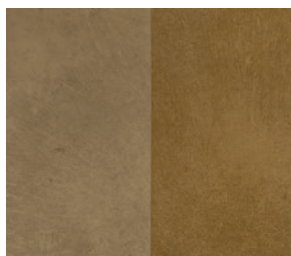
Dewy Blade



Tumbled Stone



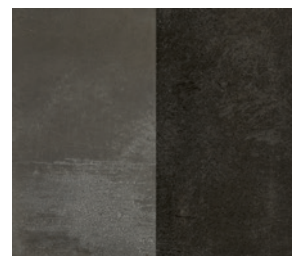
Cardinal Red



Cocoa Bean



Moss



Obsidian

INFUSION®

ACETONE

DYE STAIN



ADD VIBRANT COLOR TO POLISHED CONCRETE FLOORS.

H&C® Infusion Acetone Dye Stains achieve a layered, faux or single-color look in a lot less time than acid stains. When not being utilized in a grinding and polishing type of application, etching is required prior to application to open pores of the concrete. When layering stain, apply lighter colors first. After all dye stain has been applied, use water to remove residue. As a final step, water-based or solvent-based sealers must be applied as topcoats when acetone dye is used in non-polishing applications.

For interior use.

- Can be used along with integral and color hardeners
- Dry to touch in 30 minutes
- No neutralizing required
- Compact — very little shelf space
- Ideal for polished concrete or existing interior substrates
- The colors can be intermixed to create custom colors

Commonly used on:

- Retail stores and malls
- Garage floors
- Interior floors

Coverage* 300-400 sq. ft./gal.

Drying time @ 77 °F, 50% RH:
temperature and humidity dependent

Touch 30 minutes

VOC compliance

see page 64 for compliance map



Description	SKU#	UPC#	SMIS#	Pack
2.61 Oz.—Adobe Red	41.105013-99	035777329405	650923857	4
2.61 Oz.—Angus	41.105009-99	035777329344	650923816	4
2.61 Oz.—Canyon	41.105007-99	035777329214	650923782	4
2.61 Oz.—Cowboy Hat	41.105010-99	035777329474	650923907	4
2.61 Oz.—Desert Orange	41.105015-99	035777329443	650923873	4
2.61 Oz.—Oasis	41.105006-99	035777329191	650923782	4
2.61 Oz.—Rattler's Brown	41.105016-99	035777329450	650923881	4
2.61 Oz.—Prickly Cactus	41.105004-99	035777329160	650923758	4
2.61 Oz.—Red Rock	41.105012-99	035777329399	650923840	4
2.61 Oz.—Reno Gold	41.105002-99	035777329139	650923733	4
2.61 Oz.—Saddle Brown	41.105003-99	035777329146	650923741	4
2.61 Oz.—Salsa Red	41.105005-99	035777329467	650923899	4
2.61 Oz.—Spanish Dagger	41.105001-99	035777329115	650923717	4
2.61 Oz.—Stagecoach Brown	41.105014-99	035777329436	650923865	4
2.61 Oz.—Tortoise Shell	41.105008-99	035777329238	650923808	4
2.61 Oz.—Vegas Light	41.105011-99	035777329382	650923832	4

*Coverage will vary depending on the porosity and texture of the substrate.

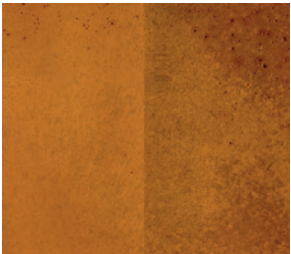


Floor: Spanish Dagger

LEFT SIDE OF SWATCH:
Sealed with
ClariShield® Water-Based Sealer
Wet Look

RIGHT SIDE OF SWATCH:
Sealed with
ClariShield Solvent-Based Sealer
Wet Look

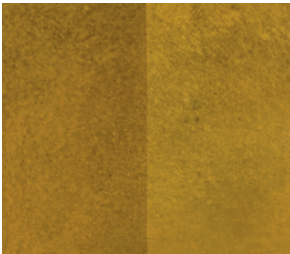
Always test an
inconspicuous area for color.



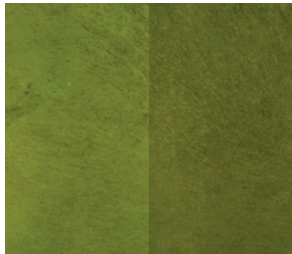
Rattler's Brown



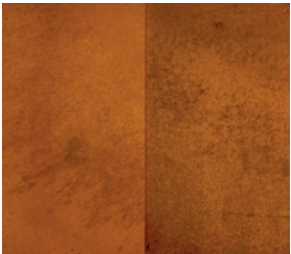
Angus



Reno Gold



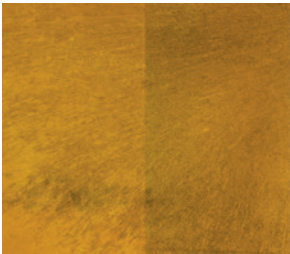
Prickly Cactus



Stagecoach Brown



Vegas Light



Desert Orange



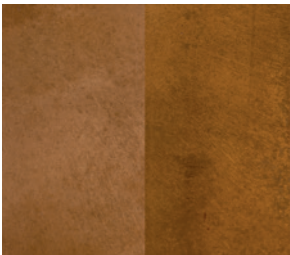
Oasis



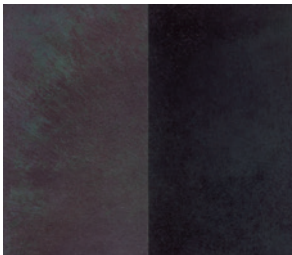
Canyon



Saddle Brown



Red Rock



Tortoise Shell



Salsa Red



Adobe Red



Cowboy Hat



Spanish Dagger

These colors are a representation. Actual color will vary due to the concrete finishing method (how smooth or porous the surface is), producing a mottling or distressed appearance.

INFUSION®

REACTIVE
STAIN



TURN A BLANK CANVAS INTO LONG-LASTING ARTISTRY.

H&C® Infusion Reactive Stains are the artistic way of giving a translucent, variegated appearance to bare, horizontal, new or existing concrete. Acid stains accentuate any imperfections in the concrete like small cracks or contaminants. With Infusion Reactive Stains, no two projects will ever be the same! As a final step, water-based or solvent-based sealers must be applied as topcoats.

For interior and exterior use over bare concrete.

- Long-lasting performance at a lower cost than other floor installations
- Multiple colored effects can be created
- Excellent for use in commercial, residential, institutional and industrial areas
- Solvent-based or water-based sealers and floor finish complete and protect the floor look

Commonly used on:

- Pool decks
- Patios and walkways
- Driveways
- Stores and malls
- Restaurants
- Office buildings

Coverage* 150-200 sq. ft./gal.

Drying time @ 77 °F, 50% RH:
temperature and humidity dependent

Recoat: 4 hours

Sealing: 24 hours after residue removal

Neutralization is only required once.

VOC compliance

see page 64 for compliance map



Description	SKU#	UPC#	SMIS#	Pack
1 Gallon—Black Coffee	40.102024-16	035777329542	650923956	4
1 Gallon—Crumbled Brick	40.102034-16	035777329580	650923972	4
1 Gallon—Lido Blue	40.102054-16	035777329627	650924012	4
1 Gallon—Midas Gold	40.102104-16	035777329955	650924111	4
1 Gallon—Mustard Seed	40.102094-16	035777329924	650924095	4
1 Gallon—Potato Ivy	40.102064-16	035777329764	650924038	4
1 Gallon—Potterswheel	40.102044-16	035777329603	650923998	4
1 Gallon—Rusted Fence	40.102014-16	035777329511	650923931	4
1 Gallon—Shore Gray	40.102114-16	035777329986	650924137	4
1 Gallon—Sienna Red	40.102084-16	035777329900	650924079	4
1 Gallon—Verdant Plain	40.102074-16	035777329870	650924053	4
1 Gallon—Wenge Wood	40.102004-16	035777329498	650923915	4



Floor: Potterswheel

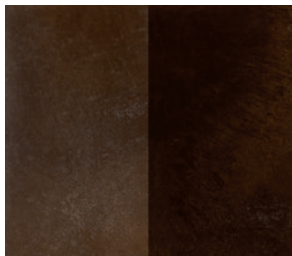
LEFT SIDE OF SWATCH:

Sealed with
ClariShield® Water-Based Sealer
Wet Look

RIGHT SIDE OF SWATCH:

Sealed with
ClariShield Solvent-Based Sealer
Wet Look

Always test an
inconspicuous area for color.



Wenge Wood



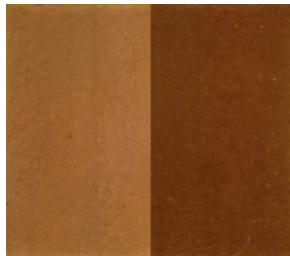
Rusted Fence



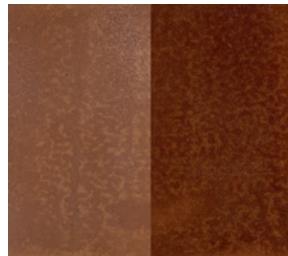
Black Coffee



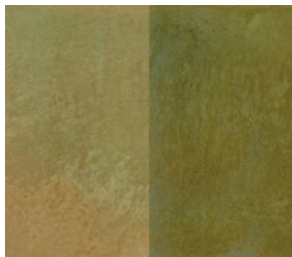
Crumbled Brick



Potterswheel



Sienna Red



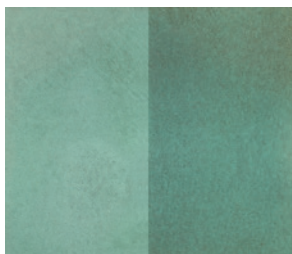
Verdant Plain*



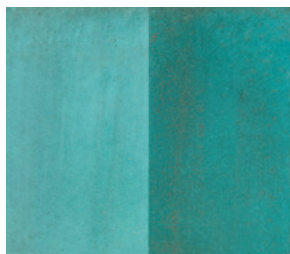
Midas Gold



Mustard Seed



Potato Ivy*



Lido Blue*



Shore Gray



Floor: Midas Gold,
Shore Gray, Mustard Seed

INFUSION® INDUSTRIAL FLOOR FINISH

HIGH-GLOSS FINISH



ENHANCES COLOR BRILLIANCE OF STAINED CONCRETE.

H&C® Infusion Industrial Floor Finish is designed to provide added protection over decorative H&C Infusion Decorative Stains.

Ideal for commercial and residential floors including high-traffic areas.

■ **Tough and flexible metal cross-linked acrylic**

■ **Dries to a brilliant gloss finish**

Commonly used on:

- Schools
- Office buildings
- Malls
- Retail stores
- Airports
- Factories
- Hospitals
- Hotels
- Restaurants

Coverage* 1,000 sq. ft./gal.

Drying time @ 77 °F, 50% RH:
temperature and humidity dependent

Touch	20 minutes
Recoat	1-2 hours
Light foot traffic	4 hours
Heavy traffic	24 hours
Full cure	3-6 days

VOC compliance

see page 64 for compliance map



Floor: Infusion Industrial Floor Finish over Reactive Stain in Potterwheel

Description	SKU#	UPC#	SMIS#	Pack
1 Gallon—Clear	40.101024-16	035777330333	650924186	4
5 Gallon—Clear	40.101025-20	035777330388	650924202	1
53-Gallon Drum—Clear**	40.001026-27	035777815281	001452739	1

SHIELD-CRETE® XL

HIGH PERFORMANCE GARAGE EPOXY

GLOSS FINISH



OUR BEST HIGH-PERFORMANCE GARAGE FLOOR COATING.

Professionals want to provide their customers with the best in garage floor protection and H&C® Shield-Crete XL High Performance Garage Epoxy delivers it, from start to showroom finish. It provides maximum adhesion, excellent hot-tire pickup and tire marking resistance and is abrasion and chemical resistant, too.

Available in in two packaging sizes so contractors can select the right size for their projects.

- Maximum adhesion for long-lasting performance
- Stops hot-tire pickup and keeps surface looking new longer
- Fights oil and chemical stains to keep color and finish like new
- High-gloss epoxy for showroom-quality appearance



CREATE A BEAUTIFUL CUSTOM LOOK.

Deco-Flakes create a confetti or terrazzo look, popular with clients. Simply broadcast on a freshly coated floor and finish with a clear coat for increased durability and protection.

See page 22 for more details.

Commonly used on:

- Garage floors
- Basement floors
- Covered patios and landings
- Warehouse and commercial floors and more

Coverage	sq. ft./gal.
Garage floors	50-160

Drying time @ 77 °F, 50% RH:
temperature and humidity dependent

Shield-Crete XL HP Hardener Part B

Touch	6-12 hours
Recoat	8-72 hours
Light foot traffic	24 hours
Heavy foot traffic	72 hours
Pot life	40 minutes
Sweat-in time	None

VOC compliance

see page 64 for compliance map



EPOXY BASECOATS: MIX FOR 1 WORKING/CATALYZED GALLON

Description	SKU#	UPC#	SMIS#	Pack
1/2 Gallon Part B Hardener	20.105301-15	035777856772	650998891	2
1 Gallon Part A Epoxy Gray Taupe	20.105302-16	035777856802	650998909	4
1 Gallon Part A Epoxy Sand Taupe	20.105303-16	035777856826	650998925	4

EPOXIES: MIX FOR 5 WORKING/CATALYZED GALLONS

Description	SKU#	UPC#	SMIS#	Pack
2 Gallon Part B Hardener	20.105305-36	035777856840	650998941	1
4 Gallon Part A Epoxy Gray Taupe	20.105306-19	035777856857	650998966	1

METALLIC

FLOORING SYSTEM

HIGH-GLOSS FINISH



TURN FLOORS INTO A WORK OF ART.

H&C® Pro Series Metallic System features a durable basecoat, dynamic metallic coat and vibrant color options for a complete metallic flooring system. Leverage the H&C technology to enhance your creative and artistic skills. In addition, our self-leveling epoxy system provides durability, chemical resistance, and a high-gloss finish for maximum performance.

Pigments are available in a variety of vibrant colors—see page 44.

- Complete system and sizes for all project needs
- Durable high-gloss finish for showroom results
- Chemical and impact resistant for maximum protection
- Self-leveling properties to achieve an even finish



Commonly used on:

- Concrete floors
- Garage floors
- Basements
- Interior use only

Coverage*	sq. ft./gal.
Epoxy Basecoat (A+B)	200-250
Self-Leveling Epoxy (A+B)	50-160

Drying time @ 72 °F, 50% RH:
temperature and humidity dependent

Epoxy Basecoat (A+B)

Touch	6 hours
Recoat	8 hours–5 days
Light foot traffic	8-12 hours
Heavy foot traffic	72-96 hours
Full cure	14 days

Self-Leveling Epoxy (A+B)

Touch	6-12 hours
Recoat	8-24 hours
Light foot traffic	24 hours
Heavy foot traffic	72 hours
Full cure	7 days

VOC compliance

see page 64 for compliance map





EPOXY BASECOATS:

MIX FOR 1 WORKING/CATALYZED GALLON

Description	SKU#	UPC#	SMIS#	Pack
1 Quart Epoxy Basecoat - Part A	50.17075A-14	035777856970	650999048	4
1 Gallon Epoxy Basecoat - Part B Black	50.17105B-16	035777857052	650999063	4
1 Gallon Epoxy Basecoat - Part B Gray	50.17125B-16	035777857090	650999089	4

MIX FOR 4 WORKING/CATALYZED GALLONS

Description	SKU#	UPC#	SMIS#	Pack
1 Gallon Epoxy Basecoat - Part A	50.17085A-16	035777856994	650999055	4
3 Gallon Epoxy Basecoat - Part B Black	50.17115B-30	035777857076	650999071	1
3 Gallon Epoxy Basecoat - Part B Gray**	50.17135B-30	035777857106	650999097	1

SELF-LEVELING EPOXY:

FULL FILL 1 GALLON

Description	SKU#	UPC#	SMIS#	Pack
1 Gallon 2-Part Self-Leveling Epoxy Clear Coat Part A	50.18065A-16	035777894347	651068926	4
1 Gallon 2-Part Self-Leveling Epoxy Clear Coat Part B	50.18065B-16	035777894378	651068959	4

FULL FILL 5 GALLONS

Description	SKU#	UPC#	SMIS#	Pack
5 Gallon 2-Part Self-Leveling Epoxy Clear Coat Part A	50.18045A-20	035777894804	651070062	1
5 Gallon 2-Part Self-Leveling Epoxy Clear Coat Part B	50.18045B-20	03577789811	651070070	1

METALLIC PIGMENTS:

Description	SKU#	UPC#	SMIS#	Pack	Description	SKU#	UPC#	SMIS#	Pack
Amber*	20.104330-41	035777862629	650995939	2	Jasper	20.104309-41	035777862278	650995723	2
Amethyst*	20.104320-41	035777862537	650995830	2	Orange Beryl	20.104305-41	035777862247	650995681	2
Aquamarine*	20.104318-41	035777862513	650995814	2	Orange Sapphire*	20.104319-41	035777862520	650995822	2
Black Diamond	20.104312-41	035777862308	650995756	2	Peridot	20.104322-41	035777862353	650995855	2
Blue Topaz*	20.104317-41	035777862506	650995806	2	Rose Gold	20.104308-41	035777862209	650995715	2
Champagne	20.104313-41	035777862315	650995764	2	Ruby	20.104311-41	035777862292	650995749	2
Chocolate Diamond*	20.104324-41	035777862568	650995871	2	Sapphire	20.104310-41	035777862285	650995731	2
Copper*	20.104325-41	035777862575	650995889	2	Siam*	20.104326-41	035777862582	650995897	2
Crystal	20.104302-41	035777854303	650995657	2	Silver	20.104301-41	035777862193	650995624	2
Diamond	20.104303-41	035777862223	650995665	2	Slate Onyx	20.104306-41	035777862254	650995699	2
Fire Opal*	20.104327-41	035777862599	650995905	2	Smoke Topaz	20.104307-41	035777862261	650995707	2
Fossil	20.104315-41	035777862339	650995780	2	Smokey Onyx	20.104314-41	035777862322	650995772	2
Garnet*	20.104323-41	035777862551	650995863	2	Smokey Quartz*	20.104316-41	035777862346	650995798	2
Gem	20.104304-41	035777862230	650995673	2	Tiger's Eye	20.104329-41	035777862612	650995921	2
Gold*	20.104328-41	035777862605	650995913	2	Topaz*	20.104321-41	035777862544	650995848	2

*Make and ship item.

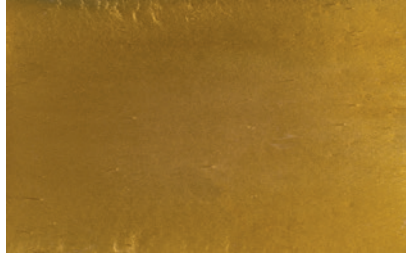
**Sell-through item.

For additional topcoat options use H&C® Pro Series ClearProtect 2 Part Polyurethane Satin or Gloss or H&C Pro Series ClearProtect 2 Part Self-leveling Epoxy Clear Glaze.

Vibrant metallic colors for interior floors.



Champagne



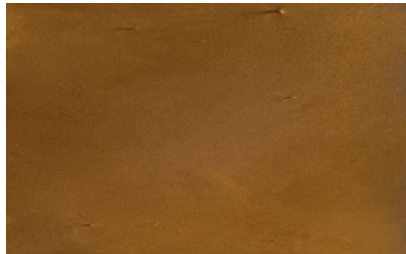
Tiger's Eye



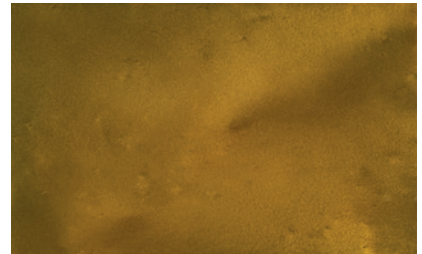
Gold*



Rose Gold



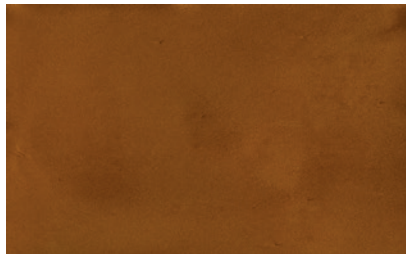
Orange Beryl



Fire Opal*



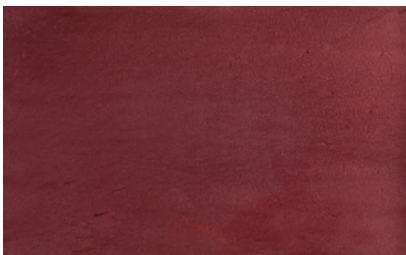
Copper*



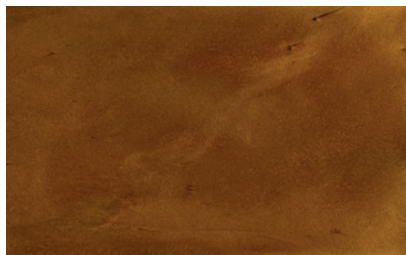
Siam*



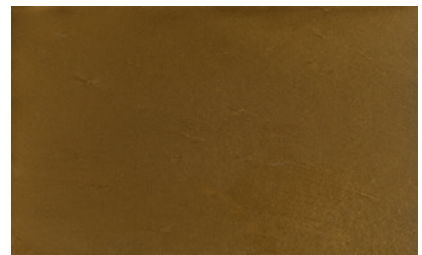
Orange Sapphire*



Garnet*



Smokey Onyx



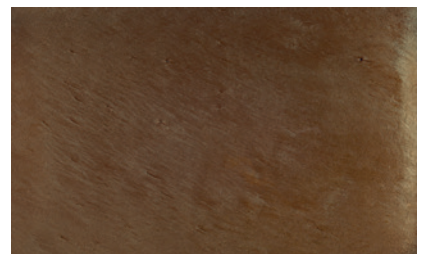
Jasper



Ruby



Smoke Topaz



Chocolate Diamond*

Classic and contemporary hues customers will love.



Gem



Diamond



Silver



Fossil



Aquamarine*



Crystal



Topaz*



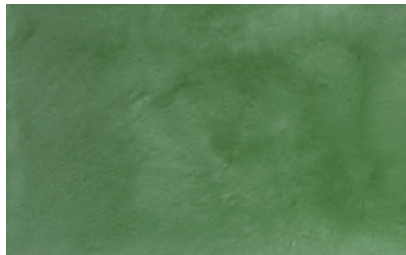
Sapphire



Slate Onyx



Amber*



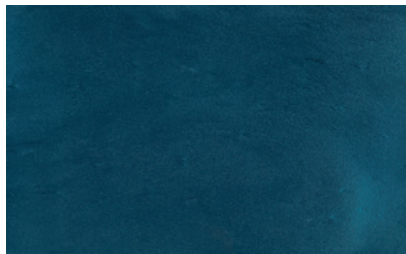
Peridot



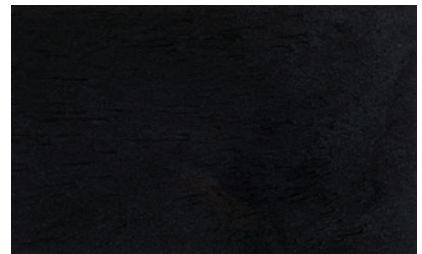
Blue Topaz*



Smoky Quartz*



Amethyst*



Black Diamond

IMPORTANT: Color may vary slightly due to age, lighting, substrate variances or application conditions. Always perform a sample test area.

*Make and ship item.

Pro Series High-Performance Clears

HOW TO CHOOSE

Protection is priority one for our High-Performance Clears and the line offers a range of products to cover any job. These high-performance clears tend to cater towards the commercial segment which includes Professional Flooring Contractors.

Commerical kitchens? Heavy vehicular traffic? Masonry? A protective overlay for decorative stains? Find the right products for these jobs and more right here.



	WATER-BASED POLYURETHANE 2-PART CLEAR	100% SOLIDS SELF-LEVELING EPOXY 2-PART CLEAR
Sheen	Available in satin and gloss	Gloss
Interior/Exterior Use	Interior & Exterior	Interior Only
Suitable for Vehicular Traffic	Best	Best
Use Over Previous Coating	Water and Solvent Based	Water and Solvent Based
PROJECT RECOMMENDATION:		
Concrete Driveways	Excellent	Not Recommended
Walkways and Patios	Excellent	Not Recommended
Concrete, Block or Brick	Not Recommended	Not Recommended
Garage Floors	Very Good	Very Good
Basements	Excellent	Excellent
Laundry Rooms	Excellent	Excellent
Mechanical Rooms	Excellent	Excellent



URETHANE PAVER SEALER 2-PART CLEAR		HIGH PERFORMANCE INDUSTRIAL CLEAR	HYDRO-DEFEND® SILOXANE HB-150 WATER REPELLENT
High-gloss		High-gloss	Flat
Interior & Exterior		Interior & Exterior	Exterior Bare Concrete Only
Best		Best	Best
Water or Solvent Based		Only Solvent Based	Not Recommended
Not Recommended		Not Recommended	Excellent
Not Recommended		Not Recommended	Excellent
Not Recommended		Not Recommended	Excellent
Very Good		Excellent	Not Recommended
Excellent		Excellent	Not Recommended
Excellent		Excellent	Not Recommended
Excellent		Excellent	Not Recommended

WATER-BASED POLYURETHANE

2-PART CLEAR

AVAILABLE IN SATIN AND GLOSS FINISHES



HIGH-PERFORMING FORMULA THAT MEETS THE STRICTEST VOC REGULATIONS.

H&C® Water-Based Polyurethane is a two-component, 60% solids, breathable aliphatic urethane designed for use over concrete overlays and concrete and masonry substrates.

Ideal for commercial, industrial & residential concrete floors, as a topcoat over epoxy, overlay or any decorative stains.

NOTE: This is a catalyzed 3(19) : 1(B) product. H&C 2-Part Polyurethane Clear Coat Part A (Clear) and Part B (Hardener) must be mixed prior to use.

- **Meets the strictest VOC regulations making it suitable for use in all states**
- **Complies with USDA requirements for food safety**
- **Breathable coating minimizes moisture entrapment and degradation of the coating**
- **Fights oil and chemical stains to keep color and finish like new**
- **Good chemical resistance, excellent wear and adhesion properties**
- **Safe application for occupied buildings**

Commonly used on:

- Retail settings
- Hotels
- Offices
- Museums
- Schools
- Warehouses

Coverage* **250-400 sq. ft./gal.**
6-4 wet mils

Drying time @ 72 °F, 50% RH:
temperature and humidity dependent at
10 mils (250 microns):

Touch	4-6 hours
Recoat	2 hours
Light foot traffic	24 hours
Heavy traffic	48-72 hours
Full cure	7 days
Pot life	1.5 hours

VOC compliance

see page 64 for compliance map



MIX FOR 1 WORKING/CATALYZED GALLON

Description	SKU#	UPC#	SMIS#	Pack
1 Gallon—2-Part Polyurethane Gloss Part A	50.11755A-16	035777467671	650964711	4
1 Quart—2-Part Polyurethane Gloss Part B	50.11755B-44	035777467701	650964737	4
1 Gallon—2-Part Polyurethane Satin Part A	50.11745A-16	035777467817	650964752	4
1 Quart—2-Part Polyurethane Satin Part B	50.11745B-44	035777467824	650964760	4

100% SOLIDS SELF-LEVELING EPOXY

2-PART CLEAR

GLOSS FINISH



DURABLE, LOW-MAINTENANCE PROTECTION.

H&C® 100% Solids Self-Leveling Epoxy was formulated to create a durable, low-maintenance flooring surface, and can be used over H&C concrete color treatments, such as Infusion® Acetone Dye, Reactive Stain and Semi-Transparent Stain. 100% Solids Self-Leveling Epoxy is for interior use only.

**Ideal for commercial, industrial & residential concrete floors,
Metallic Epoxy Floors & commercial kitchens.**

NOTE: This is a catalyzed 2(A) : 1(B) product. H&C 100% Solids Self-Leveling Epoxy Clear Coat Part A (Clear) and Part B (Hardener) must be mixed prior to use.

- **Impact and abrasion resistant**
- **Chemical resistant for added protection**
- **Complies with USDA requirements for food safety**
- **Excellent dirt, stain and chemical resistance**
- **Self-leveling properties for ease of application**
- **Resistant to hot-tire pickup and tire marking**
- **Meets the strictest VOC regulations making it suitable for use in all states**

Commonly used on:

- Retail settings
- Hotels
- Offices
- Museums
- Schools
- Warehouses
- Showrooms
- Commercial kitchens

Coverage* **50-160 sq. ft./gal.**
30-10 wet mils
60-70 sq. ft./gal. for Metallic projects

Drying time @ 77 °F, 50% RH: temperature and humidity dependent

Touch	6-12 hours
Recoat	8-24 hours
Light foot traffic	24 hours
Heavy foot traffic	72 hours
Full cure	7 days
Pot life	40 minutes

VOC compliance

see page 64 for compliance map



FULL FILL 1 GALLON

Description	SKU#	UPC#	SMIS#	Pack
1 Gallon— 2-Part Self-Leveling Epoxy Clear Coat Part A	50.18065A-16	035777894347	651068926	4
1 Gallon— 2-Part Self-Leveling Epoxy Clear Coat Part B	50.18065B-16	035777894378	651068959	4

FULL FILL 5 GALLONS

Description	SKU#	UPC#	SMIS#	Pack
5 Gallon— 2-Part Self-Leveling Epoxy Clear Coat Part A	50.18045A-20	035777894804	651070062	1
5 Gallon— 2-Part Self-Leveling Epoxy Clear Coat Part B	50.18045B-20	03577789811	651070070	1

*Coverage will vary depending on the porosity and texture of the substrate.

URETHANE PAVER SEALER

2-PART CLEAR

GLOSS FINISH



CLEAN, SAND & SEAL IN ONE DAY.

H&C® Urethane Paver Sealer is the ultimate time-saver. It is a two-part sealer that protects pavers and concrete substrates and lets you start and finish a job in one day.*

Once mixed and properly diluted 1:1 with water, makes 10 working gallons.

Ideal for pavers, concrete and masonry surfaces and more.

- **Can be applied to damp concrete**
Do not apply if rain is expected within 8 hours of application.
- **Locks in paver joint sand**
- **Enhances color of concrete and pavers**
- **Excellent dirt, stain and chemical resistance**
- **Sealer provides protection from mold, mildew, algae growth and UV damage**
- **Resistant to hot-tire pickup and tire marking**
- **Low VOC <50g/L**

Commonly used on:

- Patios & walkways
- Driveways
- Pool decks
- Lanais
- Natural stone
- Brick & block

Coverage**	sq. ft./gal.
Pavers & concrete	250-450
Porous concrete	150-250

Drying time @ 77 °F, 50% RH: temperature and humidity dependent

Touch	3-6 hours
Recoat	1 hour
Light foot traffic	< 18 hours
Heavy traffic	48 hours

VOC compliance

see page 64 for compliance map



Description	SKU#	UPC#	SMIS#	Pack
4 Gallon—Part A	50.15055A-19	035777936016	651170904	1
1 Gallon—Part B	50.15055B-16	035777943021	651186124	4

*If polymeric sand was used to fill joints between pavers, allow 24-72 hours, per manufacturer's instructions, to cure before applying sealer.

**Coverage will vary depending on the porosity and texture of the substrate.

HIGH PERFORMANCE INDUSTRIAL CLEAR

HIGH-GLOSS FINISH



TOUGH HIGH-GLOSS FINISH FOR COMMERCIAL FLOORS.

H&C® High Performance Industrial Clear is a high-solids, single-component, aliphatic, moisture-cure urethane floor coating that cures to a high-gloss, chemical-resistant film equivalent in performance to two-part urethane coatings.

- **High-solids, single-component, aliphatic, moisture-cure urethane floor coating**
- **Complies with USDA requirements for food safety**
- **Impact and abrasion resistant**
- **Chemical resistant**
- **Resists yellowing**
- **Fast cure**



Commonly used on:

- Schools
- Warehouses
- Retail settings
- Airport hangars
- Garage floors

Coverage* sq. ft./gal.

Smooth-troweled concrete 330-500
Previously stained surfaces 200-300

Drying time @ 77 °F, 50% RH: temperature and humidity dependent

Touch 2 hours
Recoat 9-14 hours
Light foot traffic 24 hours
Heavy traffic 72-96 hours
Full cure 3-6 days

VOC compliance

see page 64 for compliance map



Description	SKU#	UPC#	SMIS#	Pack
1 Gallon—Clear	50.170154-16	035777317624	650909658	4
5 Gallon—Clear	50.170155-20	035777317631	650909666	1

*Coverage will vary depending on the porosity and texture of the substrate.

HYDRO-DEFEND® SILOXANE HB-150

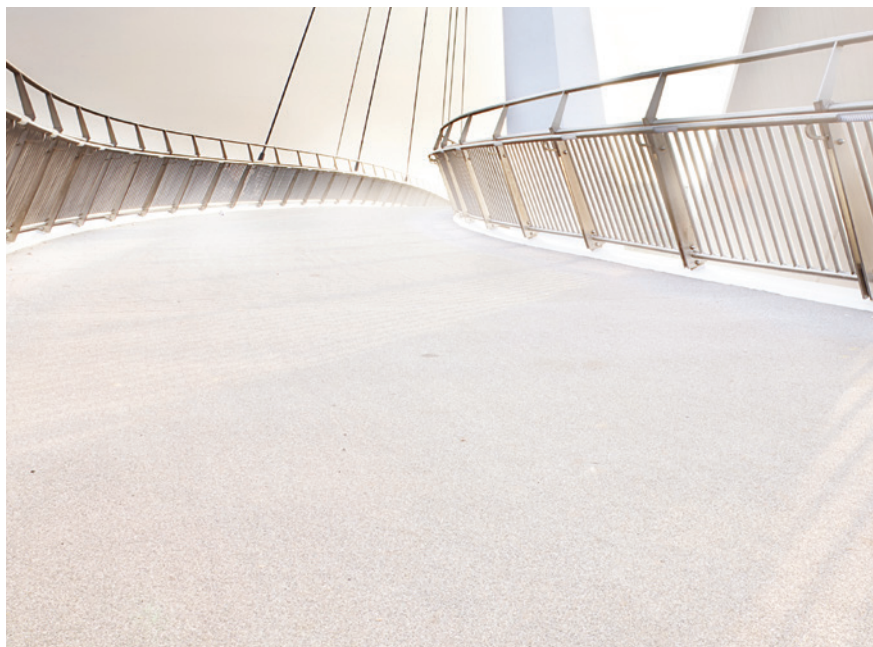
WATER REPELLENT



PROTECT CONCRETE FROM NATURE'S DESTRUCTIVE FORCES.

H&C® Hydro-Defend Siloxane HB-150 is a mineral spirits-based water repellent designed to weatherproof old and new concrete and masonry surfaces. It provides a long-lasting, breathable barrier that resists cracking, airborne dust and dirt, salt, efflorescence and spalling. It also minimizes iron staining by helping to prevent reinforcing steel from corroding and deteriorating due to water intrusion.

- **Invisible no-film finish**
- **Can be stained over**
- **15% siloxane**
- **Protects against damaging freeze/thaw cycles**
- **Reduces intrusion of water, de-icing salts and other contaminants**



Commonly used on:

- Concrete walls
- Precast concrete
- Poured concrete
- Brick
- Highways
- Bridge decks
- Cement floors
- Roof tile

Coverage*	sq. ft./gal.
Porous concrete	100-150
Split-faced block**	50-75
Fluted block	25-50
Concrete block	75-125
Brick (clay)	100-150

Drying time @ 77 °F, 50% RH: temperature and humidity dependent

Touch:	3 hours
Recoat:	24 hours
Light foot traffic:	4 hours
Heavy traffic:	72 hours

VOC compliance

see page 64 for compliance map



Description	SKU#	UPC#	SMIS#	Pack
5 Gallon—Clear	50.140155-20	035777328071	650922933	1

**Protects new or existing
concrete come rain or shine.**



Pro Series Resurfacers

HOW TO CHOOSE

Most aged concrete has imperfections in the form of cracks, discoloration, pop outs and other flaws. H&C® Concrete Resurfacers and

overlays provide an economical alternative by giving the surface a complete face-lift without having to replace it.



	<div> <div>DURA-TOP® MICRO-TOPPING INTERIOR RESURFACER</div> <div>DURA-TOP BROOM FINISH REPAIR RESURFACER</div> <div>DURA-TOP SPRAY FINE TEXTURE & FLORIDECK</div> </div>		
Interior/Exterior	Interior Only	Interior & Exterior	Interior & Exterior
Packaging	50-lb. Bags	50-lb. Bags	50-lb. Bags
PROJECT RECOMMENDATION:			
	Hotels foyers Office floors Museums Malls Concrete floor restoration projects	Driveways Walkways Sidewalks Patios Parking decks	Patios Driveways Walkways Pool decks Lanais

CUSTOMIZE WITH COLOR

Use Dura-Top® Concrete Resurfacer Color Packs to create unique concrete surfaces. Add them to any resurfacer product for an instant pop of color. See page 61.



Walkway: Blank Canvas



DURA-TOP ULTIMACRETE CONCRETE RESURFACER	DURA-TOP INSTANT & HEAVY TEXTURE CONCRETE RESURFACERS	DURA-TOP DUAL-COMPONENT TEXTURE CONCRETE RESURFACER & BOND COAT	DURA-TOP STAMPABLE OVERLAY & LIQUID RELEASE
Interior & Exterior	Interior & Exterior	Interior & Exterior	Interior & Exterior
50-lb. Bags	50-lb. Bags	50-lb. Bag—Dual Component 5 Gallon Pail—Texture Resin	50-lb. Bag—Stampable Overlay 5 Gallon—Liquid
Patios Driveways Walkways Pool decks Lanais Garage floors	Commercial Floors: Restaurants, hotels, office space, retail stores, malls and more Pool Decks Patios Walkways Lanais	Commercial Floors: Restaurants, hotels, office space, retail stores, malls and more Pool Decks Patios Walkways Lanais Driveways Garages	Pool Decks Patios Lanais Walkways Driveways Garage floors

DURA-TOP®

MICRO-TOPPING

GETS THE JOB DONE FAST.

H&C® Dura-Top Micro-Topping Concrete Resurfacer is a polymer-modified, thin, cementitious topping ideal for interior applications. The single-component formulation requires only the addition of water, making it easy to use.

- Self-bonding, single-component formulation can be applied in a single coat
- Finely blended aggregate for a smooth finish
- Durable and freeze/thaw resistant
- Used in conjunction with H&C stains to achieve a variety of unique colors and finishes

Commonly used on:

- Hotels/foyers
- Office floors
- Museums
- Malls
- Concrete floor restoration projects

Coverage:

One 50-lb. bag of H&C Dura-Top Concrete Resurfacer Micro-Topping Texture will cover 180-200 sq. /coat- approx. 1/16"- 1/32". Do not exceed 1/8" per placement. 2 coats may be required on rough or pitted surfaces.

Drying time @ 77 °F, 50% RH: temperature and humidity dependent

Initial set:	8 hours
Staining:	12 hours
Recoat:	8 hours
Foot traffic:	24 hours
Heavy traffic:	72 hours

VOC compliance
see page 64 for compliance map



BROOM FINISH

NON-SLIP FOR ADDED TRACTION.

H&C Dura-Top Broom Finish Repair is perfect for salt-damaged driveways and sidewalks. It's a cementitious non-slip surface that goes on very thin and has the typical broomed concrete look. It can be used with any H&C Color Pack to provide additional color options.**

- Trowel- and squeegee-applied topping for interior or exterior surfaces
- Ability to slope and fill spalls and low areas
- High-impact, abrasion-resistant finish
- Must be sealed to protect against staining

Commonly used on:

- Driveways and walkways
- Parking decks
- Pool decks
- Patios
- Sidewalks

Coverage:

One 50-lb. bag covers: 180-200 sq. ft. at 1/16"-1/32", 2 coats recommended.

Drying time @ 77 °F, 50% RH: temperature and humidity dependent

Initial set:	8 hours
Recoat:	8 hours
Foot traffic:	24 hours
Heavy traffic:	72 hours

As product dries, scrape and use leaf blower to remove loose material. To complete the installation, a solvent- or water-based sealer are required.

VOC compliance
see page 64 for compliance map



Description	SKU#	UPC#	SMIS#	Pack
50-lb. Bag	60.100909-50	035777325322	650922040	1

Description	SKU#	UPC#	SMIS#	Pack
50-lb. Bag	60.100609-50	035777325797	650922065	1

*Coverage will vary depending on the porosity and texture of the substrate.

**Broom Finish Repair uses a gray Portland cement so final color will vary from the color card.

FINE TEXTURE RESURFACER



SMOOTH, LOW PROFILE.

H&C® Dura-Top Fine Concrete Resurfacer resists skid marks, mildew and abrasion. This product is ideal for vehicular traffic.

- **Slower setup time for hot and humid climates**
- **Can be used in conjunction with H&C stains to achieve a variety of unique colors and finishes**
- **Durable and cost-effective solution to replacing old, worn concrete**

Commonly used on:

- Patios
- Walkways
- Pool decks
- Lanais
- Driveways

Coverage*:

One 50 lb. (22.7 kg) bag of H&C Dura-Top Fine Texture Concrete Resurfacer will cover:

Base	approximately 250 ft ²
Finish	approximately 250 ft ²

Drying time:

Texture will require a minimum of 4 hours before topcoating. If temperatures are below 70 °F, the textured surface will require a minimum of 24 hours drying before application of any topcoat. A sufficiently dried texture system will not leave a thumbnail impression in the surface.

VOC compliance

see page 64 for compliance map



Description	SKU#	UPC#	SMIS#	Pack
50-lb. Bag	60.101109-50	035777526453	650975576	1

FLORIDECK



IDEAL FOR HIGH-TRAFFIC AREAS.

H&C Dura-Top Florideck Concrete Resurfacer resists skid marks, mildew and abrasion.

- **Premium polymer for use in single-component, cementitious textured products**
- **Excellent adhesion promoter**
- **Low maintenance; abrasion resistant**

Commonly used on:

- Patios and walkways
- Garage floors
- Lanais
- Driveways
- Pool decks

Coverage*:

One 50-lb. bag will cover 180-200 sq. ft./coat - approx. 1/16"-1/32". Do not exceed 1/8" per placement. 2 coats may be required on rough or pitted surfaces.

Drying time:

Texture will require a minimum of 4 hours before topcoating. If temperatures are below 70 °F, the textured surface will require a minimum of 24 hours drying before application of any topcoat. A sufficiently dried texture system will not leave a thumbnail impression in the surface.

VOC compliance

see page 64 for compliance map



Description	SKU#	UPC#	SMIS#	Pack
50-lb. Bag	60.100119-50	035777325759	650922057	1

*Coverage will vary depending on the porosity and texture of the substrate.

DURA-TOP®

ULTIMACRETE™ CONCRETE RESURFACER



RESTORE, REPAIR & RESURFACE.

H&C® Dura-Top UltimaCrete is a cementitious topping for both interior and exterior concrete surfaces. It may be applied by compressed air spray equipment, by trowel or squeegee.

Great for interior and exterior use.

- Fine texture sand for smooth surface lower profile
- Slower setup time ideal for hot and humid climates
- Suitable for vehicular traffic
- Can be used with stains to achieve a variety of unique colors and finishes

Commonly used on:

- Patios
- Driveways
- Walkways
- Pool decks
- Lanais
- Garage floors

Coverage*:

One 50-lb. bag will cover up to 200 sq. ft.

Drying time:

Texture will require a minimum of 4 hours before topcoating. If temperatures are below 70 °F, the textured surface will require a minimum of 12-24 hours drying before application of any topcoat.

VOC compliance

see page 64 for compliance map



INSTANT & HEAVY TEXTURE CONCRETE RESURFACERS



EXCELLENT ADHESION.

H&C Dura-Top Single Component Instant & Heavy Texture Concrete Resurfacer have excellent adhesion and are cooler than regular concrete. This low-maintenance, abrasion-resistant polymer allows for multiple overcoat options.

Great for interior and exterior use.

- Mildew and skid resistant
- Suitable for vehicular traffic
- Instant Resurfacer is stainable with solvent- and water-based solid color stains
- Heavy-Traffic Resurfacer is freeze/thaw resistant

Commonly used on:

- Patios and walkways
- Garage floors
- Lanais
- Driveways
- Pool decks

Coverage*:

One 50-lb. bag will cover up to 150 sq. ft. in a splatter or knockdown finish. Coverage depends upon texture finish desired.

Drying time:

Texture will require a minimum of 4 hours before topcoating. If temperatures are below 50 °F, the textured surface will require a minimum of 24 hours drying before application of any topcoat.

VOC compliance

see page 64 for compliance map



Description	SKU#	UPC#	SMIS#	Pack
50-lb. Bag	60.101209-50	035777899939	651082083	1

Description	SKU#	UPC#	SMIS#	Pack
50-lb. Bag — Instant Texture	60.100209-50	035777324325	650920705	1
50-lb. Bag — Heavy Texture	60.100109-50	035777324332	650920713	1

*Coverage depends upon texture finish desired.

DUAL-COMPONENT TEXTURE CONCRETE RESURFACER & BOND COAT



TRANSFORM OLD CONCRETE SURFACES.

H&C® Dura-Top® Dual-Component Texture Concrete Resurfacer along with Texture Resin and Bond Coat are a durable, skid-resistant, 2-component system designed to withstand freeze/thaw cycles.

- **Creates a decorative cementitious texture to existing concrete surfaces**
- **Great for interior and exterior surfaces**
- **Stainable with solvent- and water-based solid color stains**
- **Excellent adhesion**

Commonly used on:

- Driveways
- Walkways
- Sidewalks
- Patios and lanais

Coverage*:

One 50-lb. bag covers 100-150 sq. ft.

Drying time @ 77 °F, 50% RH:

Allow 24 hours before application of any concrete sealer, stain/sealer or coating.

VOC compliance

see page 64 for compliance map



STAMPABLE OVERLAY & LIQUID RELEASE



ADD FLAIR WITH STAMPED CONCRETE.

H&C Dura-Top Stampable Overlay is a stampable cementitious topping used to resurface driveways, patios, pool areas, malls, theme parks, parking lots, interiors and exteriors. To finish the project, a film-forming coating is recommended for protection.

H&C Dura-Top Liquid Release is a blend of evaporating, residue-free release agents for use in the imprinting process to allow the clean release of texturing tools from concrete or overlay surfaces.

- **Great for interior and exterior surfaces**
- **Suitable for any climate, freeze/thaw cycles and traffic-bearing surfaces**
- **Fiber reinforced for added durability**

Commonly used on:

- Driveways
- Retail settings
- Pool decks and patios
- Sidewalks
- Garage floors and parking decks

Coverage*:

One 50-lb. bag covers:

15 sq. ft. at 3/8"

20 sq. ft. at 1/4"

Exceeding 3/8" can lead to cracking.

Drying time @ 77 °F, 50% RH:

Ranges from thirty (30) minutes to two (2) hours depending on thickness and weather conditions.

Note: Indoors, shaded areas or areas without air circulation, and material placed in cold temperatures may take significantly longer to set.

VOC compliance

see page 64 for compliance map



Description	SKU#	UPC#	SMIS#	Pack
50-lb. Bag—Dual Component Texture	60.100409-50	035777324356	650920747	1
5 Gallon—Texture Resin	60.100309-20	035777388136	650937030	1

Description	SKU#	UPC#	SMIS#	Pack
50-lb. Bag—Stampable Overlay	60.100509-50	035777324998	650921422	1
5 Gallon—Liquid Release	60.100809-20	035777325001	650921430	1

*Coverage will vary depending on the porosity and texture of the substrate.

DURA-TOP®

CONCRETE RESURFACERS COLOR PACKS



QUICK & EASY WAY TO ADD INSTANT COLOR.

Get creative with H&C® Dura-Top Concrete Resurfacers Color Packs. Choose from 17 one-pound, pre-measured and vibrant color packs to add color to any H&C Concrete Resurfacer or Overlay. Our color packs allow you to achieve instant color and effects without the need to add stain. It's that easy.

- Available in one-pound, pre-measured color packs
- Easy to use with our H&C system; we recommend one color pack per 50-lb. bag
- Use a clear sealer over textures to enhance the color even more

Use on:

Interior and exterior surfaces

Coverage

One color pack per 50-lb. bag.

VOC compliance

see page 64 for compliance map



Description	SKU#	UPC#	SMIS#	Pack
Alabaster	60.100017-99	35777324561	650920952	12
Bamboo	60.100002-99	35777324387	650920770	12
Birch Bark	60.100001-99	35777324370	650920762	12
Blank Canvas	60.100016-99	35777324554	650920945	12
Brushed Steel	60.100026-99	35777324653	650921042	12
Buckhead Brown	60.100021-99	35777324608	650920994	12
Cemented Deal	60.100018-99	35777324578	650920960	12
City Sidewalk	60.100028-99	35777324677	650921067	12
Coffee Bean	60.100025-99	35777324646	650921034	12
Cotton Ball	60.100011-99	35777324493	650920887	12
Fawn	60.100015-99	35777324530	650920929	12
Natural Cork	60.100020-99	35777324592	650920986	12
Pepper Black	60.100030-99	35777324707	650921091	12
Sandstone	60.100013-99	35777324516	650920903	12
Siberian Haze	60.100019-99	35777324585	650920978	12
Soapstone	60.100014-99	35777324523	650920911	12
Solitude	60.100029-99	35777324684	650921075	12
Tweed	60.100012-99	35777324509	650920895	12



Patio: Fawn



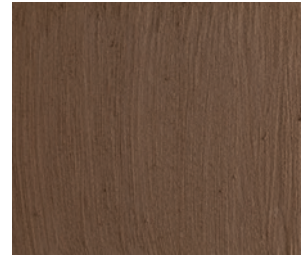
Alabaster



Natural Cork



Buckhead Brown



Coffee Bean



Cotton Ball



Bamboo



Tweed



Sandstone



Cemented Deal



Siberian Haze



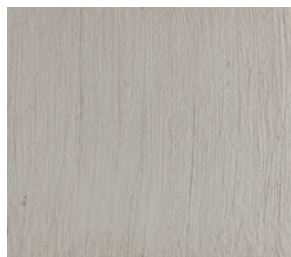
Soapstone



Fawn



Blank Canvas



Brushed Steel



Birch Bark



City Sidewalk



Solitude



Pepper Black



Walkway: Brushed Steel

CURE AND SEAL

SOLVENT-BASED CLEAR

GLOSS FINISH



KEEPS FRESH CONCRETE LOOKING THAT WAY.

H&C® Cure and Seal Solvent-Based Clear is a 25% solids curing compound that gives green/fresh concrete the treatment it needs to survive and stay looking fresh. It is formulated to help the hydration of newly placed concrete and provide long-lasting protection.

Ideal for interior and exterior green concrete surfaces.

- **Non-yellowing formulation**
- **Cures green concrete to proper strength and reduces drying, shrinkage and cracking**
- **Complies with USDA requirements for food safety**
- **Can be built to a high-gloss finish with multiple coats that dust-proofs concrete**
- **Resists damage from water, UV rays, pool chemicals, most cleaning agents and heavy traffic**
- **Can be applied after bleed water evaporates**

Commonly used on:

- Driveways
- Walkways
- Patios
- Pool decks

Coverage*	sq. ft./gal.
Porous concrete	150-250
New concrete	200-300

Drying time @ 77 °F, 50% RH: temperature and humidity dependent

Touch	30 minutes
Recoat	4 hours
Light foot traffic	Overnight
Heavy traffic	72 hours

VOC compliance

see page 64 for compliance map



Description	SKU#	UPC#	SMIS#	Pack
1 Gallon—Clear	50.155014-16	035777317648	650909674	4
5 Gallon—Clear	50.155015-20	035777317655	650909682	1
53-Gallon Drum—Clear**	50.155016-27	035777317662	650909690	1

*Coverage will vary depending on the porosity and texture of the substrate. **Made to order.

ENDURAPOLISH™

CLEAR LIQUID HARDENER & DENSIFIER



ACHIEVES A HARD, UNIFORM SURFACE.

H&C® Endurapolish Clear Liquid Hardener & Densifier is an amorphous colloidal silica solution designed to harden and densify concrete. This proprietary formulation penetrates and reacts with concrete faster than conventional systems and produces a harder, more uniform surface. It enhances stained or dyed concrete and is ideal for polished concrete applications.

- **Densifies and hardens new and existing concrete, helping achieve a uniform surface**
- **Resists blushing and yellowing**
- **Easy to apply and maintain**
- **Easy to polish — minimizes labor costs**
- **Can be used to dust-proof bare porous concrete**

Commonly used on:

- Warehouses
- Retail outlets
- Distribution centers
- Showrooms
- Airports
- Commercial floors

Coverage:

Concrete ground to 100-200 grit typically requires an application rate of approximately 400-500 sq. ft. per gallon.

Drying time:

Recoat: 30-60 mins
Must be dry to the touch
Light foot traffic: 30-60 mins
Heavy traffic: 2 hours

Maximum performance may take up to 14 days to develop, depending on temperature and humidity.

VOC compliance

see page 64 for compliance map

Description	SKU#	UPC#	SMIS#	Pack
1 Gallon	55.130034-16	035777330463	650924236	4
5 Gallon	55.130035-20	035777330494	650924244	1
53-Gallon Drum*	55.130037-27	035777575963	650983638	1

HI-GLOSS LITHIUM PROTECTIVE FINISH



PENETRATES & PROTECTS POLISHED CONCRETE.

H&C Endurapolish Hi-Gloss Lithium Protective Finish is a lithium-fortified, high-gloss finish designed to penetrate and protect polished concrete surfaces by increasing the hardness, improving stain resistance, and providing superior reflectivity when burnished. It chemically bonds to concrete and will never peel, flake or fade. It is recommended to high-speed burnish this product.

- **Increases concrete hardness**
- **Protects polished concrete, improves stain resistance**
- **Provides a highly reflective, streak-free surface**
- **Easy to apply and maintain**
- **Easy to polish — minimizes labor costs**

Commonly used on:

- Warehouses
- Retail outlets
- Distribution centers
- Showrooms
- Airports
- Commercial floors

Coverage:

1500-3000 sq. ft. per gallon high reflectivity 1500 + grit profiles (2500 sq. ft. first application/3000 sq. ft. second application).

Drying time:

To touch: 30 mins
Light foot traffic: 30-60 mins
Heavy traffic: 2 hours

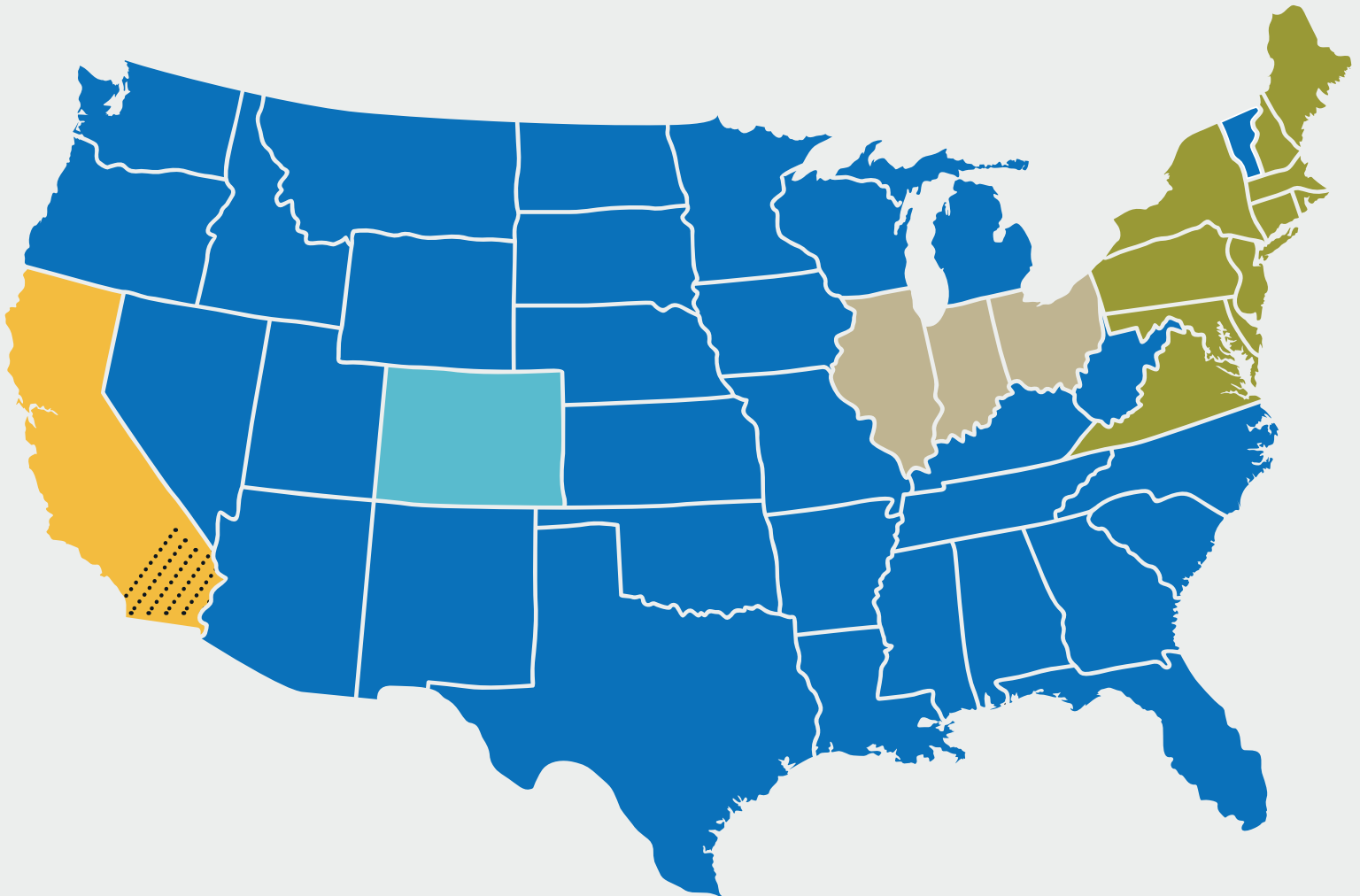
VOC compliance

see page 64 for compliance map

Description	SKU#	UPC#	SMIS#	Pack
1 Gallon	55.130044-16	035777330524	650924251	4
5 Gallon	55.130045-20	035777330531	650924269	1

*Made to order.

Products VOC Compliance



● SCAQMD (South Coast Air Quality Management District)
aqmd.gov

● CARB (California Air Resources Board)
arb.ca.gov

● OTC (Ozone Transport Commission)
otcair.org

● LADCO (Lake Michigan Air Directors Consortium)
ladco.org

● EPA (Environmental Protection Agency)
epa.gov

● Colorado AIM VOC Rule

The chart below shows, by product line, the VOC compliance (as of January 1, 2021).

For additional assistance, please contact H&C® Technical Support via the phone at 1-800-TO-STAIN (867-8246) or by web at hconcrete.com

PRODUCTS	SCAQMD	CARB	OTC	LADCO	EPA	CO
ConcreteReady® Prep Products	Y	Y	Y	Y	Y	Y
Heavy Shield® Stain	Y	Y	Y	Y	Y	Y
ColorTop™ Water-Based	Y	Y	Y	Y	Y	Y
ColorTop Water-Based 50	Y	Y	Y	Y	Y	Y
ColorTop Solvent-Based	-	-	-	Y	Y	-
ColorTop Solvent-Based 250	-	Y	Y	Y	Y	-
Cool Feel®	-	Y	Y	Y	Y	Y
Acryla-Deck®	-	Y	Y	Y	Y	Y
Shield-Crete® Garage Epoxy	-	Y	Y	Y	Y	Y
Shield-Crete Clear Coat	-	Y	Y	Y	Y	Y
ClariShield® Water-Based	Y	Y	Y	Y	Y	Y
ClariShield Solvent-Based	-	Y	Y	Y	Y	-
ClariShield Oil-Based	-	-	-	Y	Y	Y
Hydro-Defend®	Y	Y	Y	Y	Y	Y
Infusion® Semi-Transparent Stain	Y	Y	Y	Y	Y	Y
Infusion Acetone Stain	Y	Y	Y	Y	Y	Y
Infusion Reactive Stain	Y	Y	Y	Y	Y	Y
Infusion Industrial Floor Finish	Y	Y	Y	Y	Y	Y
Shield-Crete XL	-	Y	Y	Y	Y	Y
Metallic Flooring System	-	Y	Y	Y	Y	Y
Water-Based Polyurethane	Y	Y	Y	Y	Y	Y
100% Solids Self-Leveling Epoxy	Y	Y	Y	Y	Y	Y
Urethane Paver Sealer	Y	Y	Y	Y	Y	Y
High Performance Industrial Clear	-	-	Y	Y	Y	Y
Hydro-Defend Siloxane HB-150	-	-	-	Y	Y	Y
Dura-Top® Micro-Topping	Y	Y	Y	Y	Y	Y
Dura-Top Broom Finish	Y	Y	Y	Y	Y	Y
Dura-Top Fine Texture	Y	Y	Y	Y	Y	Y
Dura-Top Florideck	Y	Y	Y	Y	Y	Y
Dura-Top UltimaCrete™	Y	Y	Y	Y	Y	Y
Dura-Top Instant & Heavy Texture	Y	Y	Y	Y	Y	Y
Dura-Top Dual-Component Texture	Y	Y	Y	Y	Y	Y
Dura-Top Stampable Overlay	Y	Y	Y	Y	Y	Y
Dura-Top Concrete Resurfacers Color Packs	Y	Y	Y	Y	Y	Y
Cure and Seal	-	-	Y	Y	Y	Y
Endurapolish™ Clear Liquid Hardener & Densifier	Y	Y	Y	Y	Y	Y
Endurapolish Hi-Gloss Lithium Finish	Y	Y	Y	Y	Y	Y

PRODUCT LIST

Description	SKU#	UPC#	SMIS#	Pack	Size	MTO	Page
PREP PRODUCTS & ADDITIVES							
ConcreteReady® Concentrated Cleaner Degreaser	50.170015-15	035777230053	650712318	4	1/2 Gallon		6
ConcreteReady Phosphoric Etching Solution	50.160004-16	035777230046	650712300	2	1 Gallon		6
ConcreteReady Quick Patch and Repair	60.100709-99	035777230060	650712326	4	5 lbs./1 Gallon Bucket		7
SharkGrip® Slip-Resistant Additive	50.155004-99	035777230015	650712276	12	3.2 oz.		7
SharkGrip Slip-Resistant Additive	50.155005-99	035777230022	650712284	6	16 oz.		7
SharkGrip Slip-Resistant Additive	50.155008-99	035777230039	650712292	1	19 lb.		7
SOLID COLOR STAINS							
Heavy Shield® Extra White Tint Base	35.100214-16	035777848784	650990146	4	1 Gallon		11
Heavy Shield Extra White Tint Base	35.100215-20	035777848814	650990260	1	5 Gallon		11
Heavy Shield Extra White Tint Base	35.100218-27	035777849286	650990740	1	53-Gallon Drum	Y	11
Heavy Shield Deep Tint Base	35.100314-16	035777849309	650990757	4	1 Gallon		11
Heavy Shield Deep Tint Base	35.100315-20	035777849316	650990781	1	5 Gallon		11
Heavy Shield Deep Tint Base	35.100318-27	035777849323	650990799	1	53-Gallon Drum	Y	11
Heavy Shield Ultra-Deep Tint Base	35.100414-16	035777849330	650990807	4	1 Gallon		11
Heavy Shield Ultra-Deep Tint Base	35.100415-20	035777849347	650990815	1	5 Gallon		11
Heavy Shield Ultra-Deep Tint Base	35.100418-27	035777849354	650990823	1	53-Gallon Drum	Y	11
ColorTop™ Water-Based Extra White Tint Base	20.101214-16	035777228876	650711450	4	1 Gallon		12
ColorTop Water-Based Extra White Tint Base	20.101215-20	035777228883	650711468	1	5 Gallon		12
ColorTop Water-Based Extra White Tint Base	20.101215-27	035777859841	651003972	1	53-Gallon Drum	Y	12
ColorTop Water-Based Deep Tint Base	20.102214-16	035777229057	650711633	4	1 Gallon		12
ColorTop Water-Based Deep Tint Base	20.102215-20	035777229064	650711641	1	5 Gallon		12
ColorTop Water-Based Ultra-Deep Tint Base	20.103214-16	035777229118	650711690	4	1 Gallon		12
ColorTop Water-Based Ultra-Deep Tint Base	20.103215-20	035777229125	650711708	1	5 Gallon		12
ColorTop Water-Based Black	20.101224-16	035777228890	650711476	4	1 Gallon		12
ColorTop Water-Based Bombay	20.101255-20	035777228920	650711500	1	5 Gallon		12
ColorTop Water-Based Pearl Gray	20.101315-20	035777228968	650711542	1	5 Gallon		12
ColorTop Water-Based 50 Extra White Tint Base	20.104414-16	035777229163	650711740	4	1 Gallon		13
ColorTop Water-Based 50 Extra White Tint Base	20.104415-20	035777229194	650711757	1	5 Gallon		13
ColorTop Water-Based 50 Deep Tint Base	20.104514-16	035777229187	650711765	4	1 Gallon		13
ColorTop Water-Based 50 Deep Tint Base	20.104515-20	035777229217	650711773	1	5 Gallon		13
ColorTop Water-Based 50 Ultra-Deep Tint Base	20.104614-16	035777229200	650711781	4	1 Gallon		13
ColorTop Water-Based 50 Ultra-Deep Tint Base	20.104615-20	035777229231	650711799	1	5 Gallon		13
ColorTop Solvent-Based Extra White Tint Base	10.114014-16	035777228784	650711419	4	1 Gallon		14
ColorTop Solvent-Based Extra White Tint Base	10.114015-20	035777228821	650711427	1	5 Gallon		14
ColorTop Solvent-Based Deep Tint Base	10.116014-16	035777228838	650711435	4	1 Gallon		14

PRODUCT LIST

Description	SKU#	UPC#	SMIS#	Pack	Size	MTO	Page
SOLID COLOR STAINS <i>(continued)</i>							
ColorTop™ Solvent-Based Deep Tint Base	10.116015-20	035777228845	650711443	1	5 Gallon		14
ColorTop Solvent-Based Black	10.100024-16	035777230077	650711179	4	1 Gallon		14
ColorTop Solvent-Based Black	10.100025-20	035777230084	650711187	1	5 Gallon		14
ColorTop Solvent-Based Autumn Brown	10.100034-16	035777228548	650711195	4	1 Gallon		14
ColorTop Solvent-Based Autumn Brown	10.100035-20	035777228555	650711203	1	5 Gallon		14
ColorTop Solvent-Based Bombay	10.100054-16	035777228562	650711211	4	1 Gallon		14
ColorTop Solvent-Based Bombay	10.100055-20	035777228579	650711229	1	5 Gallon		14
ColorTop Solvent-Based Brick Red	10.100064-16	035777228586	650711237	4	1 Gallon		14
ColorTop Solvent-Based Brick Red	10.100065-20	035777228593	650711245	1	5 Gallon		14
ColorTop Solvent-Based Charcoal	10.100074-16	035777228616	650711252	4	1 Gallon		14
ColorTop Solvent-Based Charcoal	10.100075-20	035777228623	650711260	1	5 Gallon		14
ColorTop Solvent-Based Gull Gray	10.100084-16	035777228630	650711278	4	1 Gallon		14
ColorTop Solvent-Based Gull Gray	10.100085-20	035777228647	650711286	1	5 Gallon		14
ColorTop Solvent-Based Patio Green	10.100104-16	035777228654	650711294	4	1 Gallon		14
ColorTop Solvent-Based Patio Green	10.100105-20	035777228661	650711302	1	5 Gallon		14
ColorTop Solvent-Based Pearl Gray	10.100114-16	035777228678	650711310	4	1 Gallon		14
ColorTop Solvent-Based Pearl Gray	10.100115-20	035777228685	650711328	1	5 Gallon		14
ColorTop Solvent-Based Sandstone	10.100124-16	035777228692	650711336	4	1 Gallon		14
ColorTop Solvent-Based Sandstone	10.100125-20	035777228708	650711344	1	5 Gallon		14
ColorTop Solvent-Based Silver Gray	10.100144-16	035777228715	650711351	4	1 Gallon		14
ColorTop Solvent-Based Silver Gray	10.100145-20	035777228722	650711369	1	5 Gallon		14
ColorTop Solvent-Based Terracotta	10.100154-16	035777228739	650711377	4	1 Gallon		14
ColorTop Solvent-Based Terracotta	10.100155-20	035777228753	650711385	1	5 Gallon		14
ColorTop Solvent-Based Tile Red	10.100164-16	035777228760	650711393	4	1 Gallon		14
ColorTop Solvent-Based Tile Red	10.100165-20	035777228777	650711401	1	5 Gallon		14
ColorTop Solvent-Based 250 White Tint Base	30.114014-16	035777229439	650711997	4	1 Gallon		15
ColorTop Solvent-Based 250 White Tint Base	30.114015-20	035777229446	650712003	1	5 Gallon		15
ColorTop Solvent-Based 250 Deep Tint Base	30.116014-16	035777229187	650712011	4	1 Gallon		15
ColorTop Solvent-Based 250 Deep Tint Base	30.116015-20	035777229477	650712029	1	5 Gallon		15
ColorTop Solvent-Based 250 Black	30.101405-20	035777229309	650711864	1	5 Gallon	Y	15
Cool Feel Extra White Tint Base	25.101414-16	035777880210	651042921	4	1 Gallon		16
Cool Feel Extra White Tint Base	25.101415-20	035777880258	651043036	1	5 Gallon		16
Cool Feel Deep Tint Base	25.101514-16	035777880296	651043085	4	1 Gallon		16
Cool Feel Deep Tint Base	25.101515-20	035777880289	651043077	1	5 Gallon		16
Acryla-Deck® Extra White Tint Base	25.100214-16	035777311936	650902323	4	1 Gallon		17

PRODUCT LIST

Description	SKU#	UPC#	SMIS#	Pack	Size	MTO	Page
SOLID COLOR STAINS <i>(continued)</i>							
Acryla-Deck® Extra White Tint Base	25.100215-20	035777311943	650902331	1	5 Gallon		17
Acryla-Deck Deep Tint Base	25.100314-16	035777311967	650902356	4	1 Gallon		17
Acryla-Deck Deep Tint Base	25.100315-20	035777318126	650910565	1	5 Gallon		17
EPOXY GARAGE FLOOR COATINGS							
Shield-Crete® Extra White Tint Base	20.113000-99	035777913239	651114746	1	1 Kit		19
Shield-Crete Deep Tint Base	20.114000-99	035777913246	651114753	1	1 Kit		19
Shield-Crete Ultra Deep Tint Base	20.115000-99	035777913253	651114761	1	1 Kit		19
Shield-Crete Concrete Gray	20.116000-99	035777913260	651114779	1	1 Kit		19
Shield-Crete Clear Coat	20.117000-99	035777913277	651114795	1	1 Kit		21
Shield-Crete Deco-Flakes Blue Chip Creek	20.105100-99	035777914649	651118176	4	16 oz. Bag		20
Shield-Crete Deco-Flakes Salt & Pepper	20.105200-99	035777914656	651118184	4	16 oz. Bag		20
Shield-Crete Deco-Flakes Earthy Mosaic	20.105300-99	035777914663	651118192	4	16 oz. Bag		20
Shield-Crete Deco-Flakes Pebble Beach	20.105400-99	035777914670	651118200	4	16 oz. Bag		20
Shield-Crete Deco-Flakes Salt & Pepper	20.105500-99	035777914687	651118218	1	25 Lb Box		20
Shield-Crete Deco-Flakes Pebble Beach	20.105600-99	035777914694	651118226	1	25 Lb Box		20
Shield-Crete XL Part B Hardener	20.105301-15	035777856772	650998891	2	1/2 Gallon		40
Shield-Crete XL Part A Epoxy Gray Taupe	20.105302-16	035777856802	650998909	4	1 Gallon		40
Shield-Crete XL Part A Epoxy Sand Taupe	20.105303-16	035777856826	650998925	4	1 Gallon		40
Shield-Crete XL Part B Hardener	20.105305-36	035777856840	650998941	1	2 Gallon		40
Shield-Crete XL Part A Epoxy Gray Taupe	20.105306-19	035777856857	650998966	1	4 Gallon		40
CLEARS							
ClariShield® Water-Based Wet Look	50.100204-16	035777229996	650712250	4	1 Gallon		26
ClariShield Water-Based Wet Look	50.100205-20	035777230008	650712268	1	5 Gallon		26
ClariShield Water-Based Natural Look	50.100214-16	035777948514	651201295	4	1 Gallon		26
ClariShield Water-Based Natural Look	50.100215-20	035777948521	651201311	1	5 Gallon		26
ClariShield Water-Based Natural Look	50.100218-27	035777957189	651222069	1	53-Gallon Drum	Y	26
ClariShield Solvent-Based Wet Look	50.100104-16	035777943625	651187791	4	1 Gallon		26
ClariShield Solvent-Based Wet Look	50.100105-20	035777943632	651187809	1	5 Gallon		26
ClariShield Solvent-Based Wet Look	50.100108-27	035777956472	651219248	1	53-Gallon Drum	Y	26
ClariShield Solvent-Based Wet Look 250	50.100124-16	035777229415	650711971	4	1 Gallon		27
ClariShield Solvent-Based Wet Look 250	50.100125-20	035777229422	650711989	1	5 Gallon		27
ClariShield Solvent-Based Natural Look	50.100114-16	035777948545	651201337	4	1 Gallon		27
ClariShield Solvent-Based Natural Look	50.100115-20	035777948552	651201345	1	5 Gallon		27
ClariShield Solvent-Based Natural Look	50.100118-27	035777956717	651220410	1	53-Gallon Drum	Y	27
ClariShield Oil-Based	50.100304-16	035777229934	650712193	4	1 Gallon		28

PRODUCT LIST

Description	SKU#	UPC#	SMIS#	Pack	Size	MTO	Page
CLEARs <i>(continued)</i>							
ClariShield® Oil-Based	50.100305-20	035777229941	650712201	1	5 Gallon		28
Hydro-Defend® Waterproofer	50.154154-16	035777242445	650712359	4	1 Gallon		29
Hydro-Defend Waterproofer	50.154155-20	035777242452	650712367	1	5 Gallon		29
Hydro-Defend Siloxane HB-150 Water Repellent	50.140155-20	035777328071	650922933	1	5 Gallon		52
Water-Based Polyurethane 2-Part Clear Gloss Part A	50.11755A-16	035777467671	650964711	4	1 Gallon		48
Water-Based Polyurethane 2-Part Clear Gloss Part B	50.11755B-44	035777467701	650964737	4	1 Quart		48
Water-Based Polyurethane 2-Part Clear Satin Part A	50.11745A-16	035777467817	650964752	4	1 Gallon		48
Water-Based Polyurethane 2-Part Clear Satin Part B	50.11745B-44	035777467824	650964760	4	1 Quart		48
100% Solids Self-Leveling Epoxy 2-Part Clear Part A	50.18065A-16	035777894347	651068926	4	1 Gallon		49
100% Solids Self-Leveling Epoxy 2-Part Clear Part B	50.18065B-16	035777894378	651068959	4	1 Gallon		49
100% Solids Self-Leveling Epoxy 2-Part Clear Part A	50.18045A-20	035777894804	651070062	1	5 Gallon		49
100% Solids Self-Leveling Epoxy 2-Part Clear Part B	50.18045B-20	03577789811	651070070	1	5 Gallon		49
Urethane Paver Sealer 2-Part Clear Part A	50.15055A-19	035777936016	651170904	1	4 Gallon		50
Urethane Paver Sealer 2-Part Clear Part B	50.15055B-16	035777943021	651186124	4	1 Gallon		50
High Performance Industrial Clear	50.170154-16	035777317624	650909658	4	1 Gallon		51
High Performance Industrial Clear	50.170155-20	035777317631	650909666	1	5 Gallon		51
Infusion® Industrial Floor Finish	40.101024-16	035777330333	650924186	4	1 Gallon		40
Infusion Industrial Floor Finish	40.101025-20	035777330388	650924202	1	5 Gallon		40
Infusion Industrial Floor Finish	40.001026-27	035777815281	001452739	1	53-Gallon Drum	Y	40
DECORATIVE CONCRETE STAINS							
Infusion Semi-Transparent Arctic Stone	45.102014-16	035777229491	650712037	2	1 Gallon		34
Infusion Semi-Transparent Autumn Breeze	45.102114-16	035777229866	650712136	2	1 Gallon		34
Infusion Semi-Transparent Cardinal Red	45.102094-16	035777229828	650712110	2	1 Gallon		34
Infusion Semi-Transparent Cocoa Bean	45.102054-16	035777229668	650712078	2	1 Gallon		34
Infusion Semi-Transparent Cordovan	45.102064-16	035777229699	650712086	2	1 Gallon		34
Infusion Semi-Transparent Cork	45.102134-16	035777229897	650712151	2	1 Gallon		34
Infusion Semi-Transparent Dahlia Red	45.102084-16	035777229729	650712102	2	1 Gallon		34
Infusion Semi-Transparent Dewy Blade	45.102144-16	035777229903	650712169	2	1 Gallon		34
Infusion Semi-Transparent Espresso	45.102044-16	035777229613	650712060	2	1 Gallon		34
Infusion Semi-Transparent Gold Leaf	45.102124-16	035777229880	650712144	2	1 Gallon		34
Infusion Semi-Transparent Henna	45.102074-16	035777229705	650712094	2	1 Gallon		34
Infusion Semi-Transparent Marina Blue	45.102164-16	035777229927	650712185	2	1 Gallon		34
Infusion Semi-Transparent Moss	45.102154-16	035777229910	650712177	2	1 Gallon		34
Infusion Semi-Transparent Obsidian	45.102034-16	035777229514	650712052	2	1 Gallon		34
Infusion Semi-Transparent Pumpkin Spice	45.102104-16	035777229842	650712128	2	1 Gallon		34

PRODUCT LIST

Description	SKU#	UPC#	SMIS#	Pack	Size	MTO	Page
DECORATIVE CONCRETE STAINS <i>(continued)</i>							
Infusion® Semi-Transparent Tumbled Stone	45.102024-16	035777229507	650712045	2	1 Gallon		34
Infusion Acetone Adobe Red	41.105013-99	035777329405	650923857	4	2.61 Oz.		36
Infusion Acetone Angus	41.105009-99	035777329344	650923816	4	2.61 Oz.		36
Infusion Acetone Canyon	41.105007-99	035777329214	650923782	4	2.61 Oz.		36
Infusion Acetone Cowboy Hat	41.105010-99	035777329474	650923907	4	2.61 Oz.		36
Infusion Acetone Desert Orange	41.105015-99	035777329443	650923873	4	2.61 Oz.		36
Infusion Acetone Oasis	41.105006-99	035777329191	650923782	4	2.61 Oz.		36
Infusion Acetone Rattler's Brown	41.105016-99	035777329450	650923881	4	2.61 Oz.		36
Infusion Acetone Prickly Cactus	41.105004-99	035777329160	650923758	4	2.61 Oz.		36
Infusion Acetone Red Rock	41.105012-99	035777329399	650923840	4	2.61 Oz.		36
Infusion Acetone Reno Gold	41.105002-99	035777329139	650923733	4	2.61 Oz.		36
Infusion Acetone Saddle Brown	41.105003-99	035777329146	650923741	4	2.61 Oz.		36
Infusion Acetone Salsa Red	41.105005-99	035777329467	650923899	4	2.61 Oz.		36
Infusion Acetone Spanish Dagger	41.105001-99	035777329115	650923717	4	2.61 Oz.		36
Infusion Acetone Stagecoach Brown	41.105014-99	035777329436	650923865	4	2.61 Oz.		36
Infusion Acetone Tortoise Shell	41.105008-99	035777329238	650923808	4	2.61 Oz.		36
Infusion Acetone Vegas Light	41.105011-99	035777329382	650923832	4	2.61 Oz.		36
Infusion Reactive Black Coffee	40.102024-16	035777329542	650923956	4	1 Gallon		38
Infusion Reactive Crumbled Brick	40.102034-16	035777329580	650923972	4	1 Gallon		38
Infusion Reactive Lido Blue	40.102054-16	035777329627	650924012	4	1 Gallon		38
Infusion Reactive Midas Gold	40.102104-16	035777329955	650924111	4	1 Gallon		38
Infusion Reactive Mustard Seed	40.102094-16	035777329924	650924095	4	1 Gallon		38
Infusion Reactive Potato Ivy	40.102064-16	035777329764	650924038	4	1 Gallon		38
Infusion Reactive Potterswheel	40.102044-16	035777329603	650923998	4	1 Gallon		38
Infusion Reactive Rusted Fence	40.102014-16	035777329511	650923931	4	1 Gallon		38
Infusion Reactive Shore Gray	40.102114-16	035777329986	650924137	4	1 Gallon		38
Infusion Reactive Sienna Red	40.102084-16	035777329900	650924079	4	1 Gallon		38
Infusion Reactive Verdant Plain	40.102074-16	035777329870	650924053	4	1 Gallon		38
Infusion Reactive Wenge Wood	40.102004-16	035777329498	650923915	4	1 Gallon		38
Epoxy Basecoat Part A	50.17075A-14	035777856970	650999048	4	1 Quart		42
Epoxy Basecoat Part B Black	50.17105B-16	035777857052	650999063	4	1 Gallon		42
METALLIC FLOOR SYSTEM							
Epoxy Basecoat Part B Gray	50.17125B-16	035777857090	650999089	4	1 Gallon		42
Epoxy Basecoat Part A	50.17085A-16	035777856994	650999055	4	1 Gallon		42
Epoxy Basecoat Part B Black	50.17115B-30	035777857076	650999071	1	3 Gallon		42

PRODUCT LIST

Description	SKU#	UPC#	SMIS#	Pack	Size	MTO	Page
METALLIC FLOOR SYSTEM <i>(continued)</i>							
100% Solids Self-Leveling Epoxy 2-Part Clear Part A	50.18065A-16	035777894347	651068926	4	1 Gallon		42
100% Solids Self-Leveling Epoxy 2-Part Clear Part B	50.18065B-16	035777894378	651068959	4	1 Gallon		42
100% Solids Self-Leveling Epoxy 2-Part Clear Part A	50.18045A-20	035777894804	651070062	1	5 Gallon		42
100% Solids Self-Leveling Epoxy 2-Part Clear Part B	50.18045B-20	03577789811	651070070	1	5 Gallon		42
Metallic Pigments Amber	20.104330-41	035777862629	650995939	2	16 Oz.	Y	42
Metallic Pigments Amethyst	20.104320-41	035777862537	650995830	2	16 Oz.	Y	42
Metallic Pigments Aquamarine	20.104318-41	035777862513	650995814	2	16 Oz.	Y	42
Metallic Pigments Black Diamond	20.104312-41	035777862308	650995756	2	16 Oz.		42
Metallic Pigments Blue Topaz	20.104317-41	035777862506	650995806	2	16 Oz.	Y	42
Metallic Pigments Champagne	20.104313-41	035777862315	650995764	2	16 Oz.		42
Metallic Pigments Chocolate Diamond	20.104324-41	035777862568	650995871	2	16 Oz.	Y	42
Metallic Pigments Copper	20.104325-41	035777862575	650995889	2	16 Oz.	Y	42
Metallic Pigments Crystal	20.104302-41	035777854303	650995657	2	16 Oz.		42
Metallic Pigments Diamond	20.104303-41	035777862223	650995665	2	16 Oz.		42
Metallic Pigments Fire Opal	20.104327-41	035777862599	650995905	2	16 Oz.	Y	42
Metallic Pigments Fossil	20.104315-41	035777862339	650995780	2	16 Oz.		42
Metallic Pigments Garnet	20.104323-41	035777862551	650995863	2	16 Oz.	Y	42
Metallic Pigments Gem	20.104304-41	035777862230	650995673	2	16 Oz.		42
Metallic Pigments Gold	20.104328-41	035777862605	650995913	2	16 Oz.	Y	42
Metallic Pigments Jasper	20.104309-41	035777862278	650995723	2	16 Oz.		42
Metallic Pigments Orange Beryl	20.104305-41	035777862247	650995681	2	16 Oz.		42
Metallic Pigments Orange Sapphire	20.104319-41	035777862520	650995822	2	16 Oz.	Y	42
Metallic Pigments Peridot	20.104322-41	035777862353	650995855	2	16 Oz.		42
Metallic Pigments Rose Gold	20.104308-41	035777862209	650995715	2	16 Oz.		42
Metallic Pigments Ruby	20.104311-41	035777862292	650995749	2	16 Oz.		42
Metallic Pigments Sapphire	20.104310-41	035777862285	650995731	2	16 Oz.		31
Metallic Pigments Siam	20.104326-41	035777862582	650995897	2	16 Oz.	Y	31
Metallic Pigments Silver	20.104301-41	035777862193	650995624	2	16 Oz.		42
Metallic Pigments Slate Onyx	20.104306-41	035777862254	650995699	2	16 Oz.		42
Metallic Pigments Smoke Topaz	20.104307-41	035777862261	650995707	2	16 Oz.		42
Metallic Pigments Smokey Onyx	20.104314-41	035777862322	650995772	2	16 Oz.		31
Metallic Pigments Smokey Quartz	20.104316-41	035777862346	650995798	2	16 Oz.	Y	42
Metallic Pigments Tiger's Eye	20.104329-41	035777862612	650995921	2	16 Oz.		42
Metallic Pigments Topaz	20.104321-41	035777862544	650995848	2	16 Oz.	Y	42

PRODUCT LIST

Description	SKU#	UPC#	SMIS#	Pack	Size	MTO	Page
RESURFACERS							
Dura-Top® Micro-Topping	60.100909-50	035777325322	650922040	1	50-lb. Bag		42
Dura-Top Broom Finish	60.100609-50	035777325797	650922065	1	50-lb. Bag		42
Dura-Top Fine Texture Resurfacer	60.101109-50	035777526453	650975576	1	50-lb. Bag		31
Dura-Top Florideck	60.100119-50	035777325759	650922057	1	50-lb. Bag		42
Dura-Top Ultimacrete™	60.101209-50	035777899939	651082083	1	50-lb. Bag		42
Dura-Top Instant Texture	60.100209-50	035777324325	650920705	1	50-lb. Bag		31
Dura-Top Heavy Texture	60.100109-50	035777324332	650920713	1	50-lb. Bag		42
Dura-Top Dual-Component Texture	60.100409-50	035777324356	650920747	1	50-lb. Bag		42
Dura-Top Dual-Texture Resin	60.100309-20	035777388136	650937030	1	5 Gallon		42
Dura-Top Stampable Overlay	60.100509-50	035777324998	650921422	1	50-lb. Bag		42
Dura-Top Liquid Release	60.100809-20	035777325001	650921430	1	1 lb. Bag		42
Dura-Top Color Packs Alabaster	60.100017-99	35777324561	650920952	12	1 lb. Bag		60
Dura-Top Color Packs Bamboo	60.100002-99	35777324387	650920770	12	1 lb. Bag		60
Dura-Top Color Packs Birch Bark	60.100001-99	35777324370	650920762	12	1 lb. Bag		60
Dura-Top Color Packs Blank Canvas	60.100016-99	35777324554	650920945	12	1 lb. Bag		60
Dura-Top Color Packs Brushed Steel	60.100026-99	35777324653	650921042	12	1 lb. Bag		60
Dura-Top Color Packs Buckhead Brown	60.100021-99	35777324608	650920994	12	1 lb. Bag		60
Dura-Top Color Packs Cemented Deal	60.100018-99	35777324578	650920960	12	1 lb. Bag		60
Dura-Top Color Packs City Sidewalk	60.100028-99	35777324677	650921067	12	1 lb. Bag		60
Dura-Top Color Packs Coffee Bean	60.100025-99	35777324646	650921034	12	1 lb. Bag		60
Dura-Top Color Packs Cotton Ball	60.100011-99	35777324493	650920887	12	1 lb. Bag		60
Dura-Top Color Packs Fawn	60.100015-99	35777324530	650920929	12	1 lb. Bag		60
Dura-Top Color Packs Natural Cork	60.100020-99	35777324592	650920986	12	1 lb. Bag		60
Dura-Top Color Packs Pepper Black	60.100030-99	35777324707	650921091	12	1 lb. Bag		60
Dura-Top Color Packs Sandstone	60.100013-99	35777324516	650920903	12	1 lb. Bag		60
Dura-Top Color Packs Siberian Haze	60.100019-99	35777324585	650920978	12	1 lb. Bag		60
Dura-Top Color Packs Soapstone	60.100014-99	35777324523	650920911	12	1 lb. Bag		60
Dura-Top Color Packs Solitude	60.100029-99	35777324684	650921075	12	1 lb. Bag		60
Dura-Top Color Packs Tweed	60.100012-99	35777324509	650920895	12	1 lb. Bag		60
POLISHERS & DUSTPROOFERS							
Cure and Seal	50.155014-16	035777317648	650909674	4	1 Gallon		62
Cure and Seal	50.155015-20	035777317655	650909682	1	5 Gallon		62
Cure and Seal	50.155016-27	035777317662	650909690	1	53-Gallon Drum	Y	62
Endurapolish™ Clear Liquid Hardener & Densifier	55.130034-16	035777330463	650924236	4	1 Gallon		63
Endurapolish Clear Liquid Hardener & Densifier	55.130035-20	035777330494	650924244	1	5 Gallon		63

PRODUCT LIST

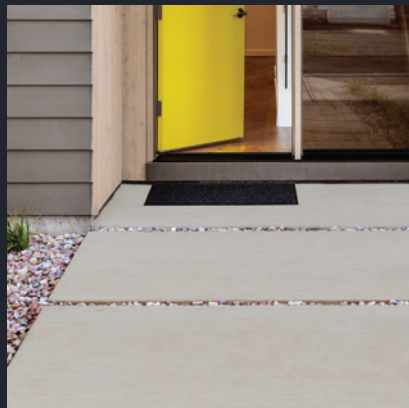
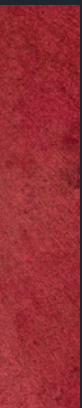
Description	SKU#	UPC#	SMIS#	Pack	Size	MTO	Page
POLISHERS & DUSTPROOFERS <i>(continued)</i>							
Endurapolish™ Clear Liquid Hardener & Densifier	55.130037-27	035777575963	650983638	1	53-Gallon Drum	Y	63
Endurapolish Hi-Gloss Lithium Finish	55.130044-16	035777330524	650924251	4	1 Gallon		63
Endurapolish Hi-Gloss Lithium Finish	55.130045-20	035777330531	650924269	1	5 Gallon		63

NOTES

This image shows a full page of blank handwriting practice paper. It features 20 evenly spaced horizontal blue lines across the entire page, providing a guide for letter height and placement. The lines are uniform in color and thickness, set against a plain white background. There are no margins, text, or other markings present.

NOTES

This image shows a single sheet of white paper with horizontal ruling lines. The lines are evenly spaced and run across the width of the page. There are no margins, text, or other markings on the paper.



H&C Concrete Coatings
Prospect Ave., Cleveland, Ohio 44115
1-800-867-8246

© H&C Concrete Coatings
06/21 TAGHC 771/21
720-0250-000 2005859PD