



— DECORATIVE CONCRETE —

PRODUCT CATALOG

—

FIND YOUR INSPIRATION AT www.HCConcrete.com

PRODUCT CATALOG



H&C® has a comprehensive line for your decorative concrete product needs. With a wide product offering of stains, sealers, water repellents, resurfacers and more — we are making it easy for you to create your own look. Add years of life to new concrete, or revitalize old concrete for much less than the cost of replacement.

CONTENTS

04	STEPS TO PREP
06	PREP PRODUCTS & ADDITIVES
08	EPOXY FLOOR COATINGS
11	SOLID COLOR STAINS & SEALERS
18	SEMI-TRANSPARENT STAINS
20	CLEAR SEALERS
22	PAVER SEALERS
23	WATER REPELLENTS
24	PRO SERIES
25	POLISHING PRODUCTS
26	DECORATIVE STAINS AND DYES
30	COMMERCIAL CLEAR SEALERS
34	METALLIC FLOORING
36	CONCRETE RESURFACERS
42	COLOR PACKS
44	COMMERCIAL WATER REPELLENTS
47	DECORATIVE STAINS COMPARISON GUIDE
48	CLEAR COMPARISON GUIDE
50	VOC COMPLIANCE
52	PRODUCT LISTING



PROTECT AND BEAUTIFY ALL OF YOUR CONCRETE SURFACES WITH H&C® DECORATIVE CONCRETE PRODUCTS

WHO WE ARE

H&C, a leading brand for concrete beauty and protection, provides outstanding concrete stains, sealers, floor coatings and accessories that deliver vibrant color, superior adhesion and lasting, reliable durability.

Our commitment to high-performing products, superb service and support, and innovative solutions put us in a class of our own. We always look for new and innovative ways to make concrete more appealing, more artistic and more colorful.

H&C has a comprehensive offering to meet your decorative concrete needs — with a wide product offering of stains, sealers, water repellents, resurfacers and more. Add years of life to new concrete or revitalize old concrete for much less than the cost of replacement.

Ideal for residential and commercial projects, H&C has products for both interior and exterior, concrete and masonry surfaces.

You can always count on H&C for the newest technology in concrete coatings. We value your feedback, and look forward to bringing you the next great thing in concrete coatings.

WITH H&C® STAINS AND SEALERS, IT'S EASY TO ADD BEAUTY AND PROTECTION TO DRIVEWAYS, WALKWAYS, PATIOS, GARAGE FLOORS AND OTHER CONCRETE AND MASONRY SURFACES.

To ensure a successful project, surface preparation is a critical step that allows your concrete coating to bond properly. Always be sure to follow all product instructions before applying your coating.

01

STEP 01

Note about STEP 01:

To test absorption, spray various sections of the surface to be stained with water. The water should absorb and physically darken the concrete within 10-15 seconds.

- First, clear the area to be coated.
- All surfaces must be clean, dry and free of grease, oil, paint and sealers.
- Remove oil and grease spots with a cleaner degreaser. We recommend H&C CONCRETEREADY® CLEANER DEGREASER (See page 6).
- Sprinkle solution onto surface in 10'x10' sections, and allow to penetrate for 5-6 minutes.
- Scrub the area with a stiff bristle broom while rinsing with a garden hose.
- Make sure to rinse the concrete surface thoroughly and allow all surfaces to dry at least 24 hours before sealing.
- The concrete surface should be porous and able to absorb water. This indicates that the stain or sealer will properly adhere to the concrete surface.

02

STEP 02

- If the water does not absorb rapidly then the concrete is not porous. This will require either an acid etch using an etching solution or some mechanical means of abrasion.
- H&C CONCRETEREADY® PHOSPHORIC ETCHING SOLUTION (See page 6) opens the pores of bare concrete so H&C concrete stains and sealers can bond properly with the substrate.
- Apply the etching solution from a plastic sprinkling can.
- Sprinkle evenly on the concrete. Chemical reaction (foaming and fizzing) will occur. Agitate with a stiff broom for 10 minutes or until bubbling stops.
- Triple rinse and allow to dry completely.
- Inspect the surface to ensure that cleaning and etching were successful. The surface should feel like 120-grit sandpaper, or rougher, and be free of all dirt and concrete dust.
- If you fail to achieve the proper profile, it may be necessary to repeat the process and etch again.
- After cleaning and etching, it is important to wait 24 hours before applying H&C stains or sealers.

03

STEP 03

- To repair low spots and spalled concrete for vertical or horizontal substrates, use a patch and repair product.
- H&C CONCRETEREADY SINGLE-COMPONENT QUICK PATCH AND REPAIR (See page 7) is a fast and easy-to-use patching compound. It provides a strong bond to properly prepared concrete areas.
- Please note that patching compounds will generally be visible and may be detectable when used with H&C Solid or H&C Transparent Stains.

Following proper surface preparation rules allows the H&C coating to enhance and revitalize concrete and masonry surfaces for long-lasting protection. Remember to refer to your specific H&C product label for any application instructions.

For more detailed guidelines or technical assistance, please visit our website at www.hcconcrete.com.



Amazing concrete projects start with H&C® CONCRETEREADY® PHOSPHORIC ETCHING SOLUTION. The phosphoric acid-based solution creates a profile on the concrete so H&C concrete stains and sealers can bond properly with the surface.

Concentrate: Add water to make four gallons of etching solution out of one gallon of product.

FEATURES & BENEFITS:

- Prepares surface to be coated by opening the pores of the concrete
- Increases bond of H&C concrete coatings
- Sprinkle on — hose off
- Biodegradable — will not harm vegetation

RECOMMENDED USES:

- Concrete floors
- Driveways
- Patios
- Walkways
- Pool decks
- Masonry
- Walls
- Efflorescence remover for pavers

COVERAGE & DRYING TIME:

Coverage*: 100-150 sq. ft. per gallon

Drying time:

Allow the surface to dry thoroughly before applying any concrete stain or sealer. The finished surface should have a texture that feels like 120-grit sandpaper. If the surface remains smooth, re-etching may be required.

PRODUCT INFORMATION:

Description	SKU#	UPC#	SMIS	Pack
1 Gallon — Clear	50.160004-16	035777230046	650712300	2

* Coverage will vary depending on the porosity and texture of the surface.



H&C® CONCRETEREADY® CONCENTRATED CLEANER DEGREASER increases any coating's ability to bond with the surface. This heavy-duty cleaner will remove oil, grease, brake and transmission fluid and antifreeze.

Concentrate: Add water to make 4 gallons of Cleaner Degreaser from one gallon of product.

FEATURES & BENEFITS:

- Extra-heavy-duty power to remove grease and oil stains
- Prepares surface for staining or sealing
- Increases penetration of H&C coating
- Use full strength for tough stains or diluted for milder cleaning
- Neutral pH-based product

RECOMMENDED USES:

- Concrete floors
- Driveways
- Patios
- Walkways
- Pool decks
- Masonry
- Walls
- Pavers

COVERAGE & DRYING TIME:

Coverage*: 100 sq. ft. per gallon at 50/50 dilution

Drying time:

Allow surface to dry completely (18-24 hours recommended) before applying any stains or sealers. Allow the surface to dry 2-4 hours before applying H&C CONCRETEREADY ETCHING SOLUTION.

PRODUCT INFORMATION:

Description	SKU#	UPC#	SMIS	Pack
1/2 Gallon — Clear	50.170015-15	035777230053	650712318	4

* Coverage will vary depending on the porosity and texture of the surface.



Get concrete back to working order easily and quickly with H&C® CONCRETEREADY® SINGLE-COMPONENT QUICK PATCH AND REPAIR. Single-component, cement-based patching compound will restore the concrete as fast as possible.

FEATURES & BENEFITS:

- Quick and easy application — final setup time is 15-30 minutes
- Can provide a workable, no-slump patch
- May be used to repair above- or below-grade concrete
- Produces a bond stronger than the surrounding concrete

RECOMMENDED USES:

- Driveways
- Garage floors
- Patios
- Walkways
- Pool decks
- Basement floors
- Steps
- Sidewalks

COVERAGE & DRYING TIME:

5 pounds will equal approximately .045 cubic feet, or 1.2 sq. ft. at 1/2" depth. Maximum thickness is approximately 1".

Set time: 15-30 mins **Stain/Seal:** 1 hour

PRODUCT INFORMATION:

Description	SKU#	UPC#	SMIS	Pack
5 lb. / 1 Gallon Bucket	60.100709-99	035777230060	650712326	4



H&C® SHARKGRIP® SLIP-RESISTANT ADDITIVE is a micronized polymer with low-oil absorption and high-solvent resistance so it easily stirs into most oil-based and water-based paints and other coatings. And the low density allows it to stay well suspended in thin materials like stains and sealers.

FEATURES & BENEFITS:

- Puts the bite in concrete surfaces aiding in slip resistance
- Long wearing; easy to walk on
- Will not affect the color of the topcoat
- Easy to use

RECOMMENDED USES:

- Inclined surfaces
- Driveways
- Garages
- Steps
- Patios
- Pool decks

COVERAGE & DRYING TIME:

Add contents of one 3.2 oz. container into one gallon of H&C Concrete Stain or Sealer.

PRODUCT INFORMATION:

Description	SKU#	UPC#	SMIS	Pack
3.2 oz. — Powder	50.155004-99	035777230015	650712276	12
16 oz. — Powder	50.155005-99	035777230022	650712284	6
19 lb. — Powder	50.155008-99	035777230039	650712292	1

SHIELD-CRETE®

WATER-BASED EPOXY GARAGE FLOOR COATING



H&C® SHIELD-CRETE® WATER-BASED EPOXY GARAGE FLOOR COATING is a 2-part epoxy that penetrates deeply into the concrete, creating a hard, durable surface that resists peeling and hot tire pickup for long-lasting beauty.

FEATURES & BENEFITS:

- Extended application time for an even finish with no lap marks.
- Stops hot tire pickup and keeps surface looking new longer.
- Resists peeling for lasting beauty and protection.
- Fights oil and chemical stains to keep color and finish like new.
- Comes in three bases tintable to 1,000+ Sherwin-Williams colors as well as packaged color Concrete Gray.

EACH KIT CONTAINS:

- Part A Epoxy — 1 Gallon
- Part B Hardener — 1 Quart
- Cleaner Degreaser — 3.2 Oz.
- Stir stick
- Instruction sheet



RECOMMENDED USES:

- Garages
- Basements
- Laundry rooms
- Storage areas
- Man caves
- Warehouses
- Commercial floors

COVERAGE & DRYING TIME:

Coverage:

When properly applied to a typical, smooth concrete surface, this kit covers approximately 250 sq. ft. (23 sq. m.).

Drying time, @ 77 °F, 50% RH:

temperature and humidity dependent

Pot life: 5.5 hours

Recoat window: min 6 hours

Maximum : 72-96 hours

PRODUCT INFORMATION:

Description	SKU#	UPC#	SMIS #	Pack
Shield-Crete Epoxy Garage Coating Kit Extra White Base	20.113000-99	035777913239	651114746	1
Shield-Crete Epoxy Garage Coating Kit Deep Base	20.114000-99	035777913246	651114753	1
Shield-Crete Epoxy Garage Coating Kit Ultra Deep Base	20.115000-99	035777913253	651114761	1
Shield-Crete Epoxy Garage Coating Kit - Concrete Gray	20.116000-99	035777913260	651114779	1



H&C® SHIELD-CRETE® DECO-FLAKES are vinyl paint chips that provide a unique, decorative finish similar to granite or terrazzo. They also help hide imperfections in the concrete surface and depending on the density of the flake application, create custom flake patterns. Available in four versatile blends.

FEATURES & BENEFITS:

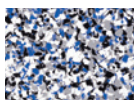
- Adds a unique decorative finish
- Available in four versatile blends
- Salt & Pepper and Pebble Beach are also available in 25 lb. boxes

RECOMMENDED USES:

- Garages
- Laundry rooms
- Storage areas
- Covered patios and landings
- Man caves
- Warehouse floors
- Commercial floors
- Basements



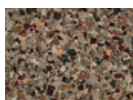
Salt & Pepper



Blue Chip Creek



Pebble Beach



Earthy Mosaic

COVERAGE (Per 250 sq. ft.):

Light Pattern: 1 package
Medium Pattern: 2 packages
Heavy Pattern: 3-4 packages
Full Pattern: 5-6 packages

PRODUCT INFORMATION:

Description	SKU#	UPC#	SMIS	Pack
Blue Chip Creek Deco-Flakes – 1 lb. Pouch	20.105100-99	035777914649	65118176	4
Salt & Pepper Deco-Flakes – 1 lb. Pouch	20.105200-99	035777914656	65118184	4
Salt & Pepper Deco-Flakes – 25 lb. Box	20.105500-99	035777914687	65118218	1
Earthy Mosaic Deco-Flakes – 1 lb. Pouch	20.105300-99	035777914663	65118192	4
Pebble Beach Deco-Flakes – 1 lb. Pouch	20.105400-99	035777914670	65118200	4
Pebble Beach Deco-Flakes – 25 lb. Box	20.105600-99	035777914694	65118226	1



H&C® SHIELD-CRETE® EPOXY CLEAR COAT is a 2-part clear epoxy that adds extra protection and resists common stains so your new garage floor retains its showroom finish. Use the slip-resistant additive for extra traction. If using Shield-Crete Deco-Flakes, remember after broadcasting them on a freshly coated floor, you must finish with a clear coat to secure them.

FEATURES & BENEFITS:

- Extended application time for an even finish with no lap marks.
- Stops hot tire pickup and keeps surface looking new longer.
- Resists peeling for lasting beauty and protection.
- Fights oil and chemical stains to keep color and finish like new.
- Creates gloss finish for added shine.

EACH KIT CONTAINS:

- Part A Epoxy — 1 Gallon
- Part B Hardener — 1 Quart
- Slip-Resistant Additive — 2.4 Oz.
- Stir stick
- Instruction sheet

RECOMMENDED USES:

- Garages
- Basements
- Laundry rooms
- Storage areas
- Man caves
- Warehouses
- Commercial floors

COVERAGE & DRYING TIME:

Coverage: When properly applied to a typical, smooth concrete surface, this kit covers approximately 250 sq. ft. (23 sq. m.).

Drying time, @ 77 °F, 50% RH: temperature and humidity dependent

Pot life: 5.5 hours

Recoat window: min 6 hours

Maximum : 72-96 hours

PRODUCT INFORMATION:

Description	SKU#	UPC#	SMIS	Pack
Shield-Crete Epoxy Garage Clear Coat Kit	20.117000-99	035777913277	651114795	1

SHIELD-CRETE® XL

HIGH PERFORMANCE GARAGE EPOXY



H&C® SHIELD-CRETE® XL is our best high performance garage floor coating. It provides maximum adhesion, excellent hot tire pickup and tire marking resistance and is abrasion and chemical resistant too. Available in Gray Taupe and Sand Taupe, it comes in two packaging sizes so contractors can select the right size for their projects.

FEATURES & BENEFITS:

- Maximum adhesion for long-lasting performance.
- Stops hot tire pickup and keeps surface looking new longer.
- Fights oil and chemical stains to keep color and finish like new.
- High-gloss epoxy for showroom-quality appearance.

RECOMMENDED USES:

- Garage floors
- Basement floors
- Covered patios and landings
- Warehouse and commercial floors
- Any interior, properly prepared concrete surface



COVERAGE & DRYING TIME:

Coverage:	sq. ft./gal
Garage floors	50-160

Shield-Crete XL HP Hardener Part B
Drying time, @ 72 °F-95 °F, 50% RH:
 temperature and humidity dependent

To touch:	6-12 hours
Recoat:	8-72 hours
Light foot traffic:	24 hours
Heavy foot traffic:	72 hours
Pot life:	40 minutes
Sweat-in Time	None

Shield-Crete XL HP Fast Set Hardener Part B
Drying time, @ 72 °F, 50% RH:
 temperature and humidity dependent

To touch:	4 hours
Recoat:	8-72 hours
Light foot traffic:	10-12 hours
Heavy foot traffic:	24-48 hours
Pot life:	25 minutes
Sweat-in Time	None

EPOXY BASECOATS:

MIX FOR 1 WORKING / CATALYZED GALLON

Description	SKU#	UPC#	SMIS #	Pack
1/2 Gallon — High Performance Garage Epoxy Part B Hardener	20.105301-15	035777856772	650998891	1
1 Gallon — High Performance Garage Epoxy Part A Epoxy Gray Taupe	20.105302-16	035777856802	650998909	4
1 Gallon — High Performance Garage Epoxy Part A Epoxy Sand Taupe	20.105303-16	035777856826	650998925	4

EPOXIES:

MIX FOR 5 WORKING / CATALYZED GALLONS

Description	SKU#	UPC#	SMIS #	Pack
2 Gallon — High Performance Garage Epoxy Part B Fast Set Hardener†	20.105304-36	035777856833	650998933	1
2 Gallon — High Performance Garage Epoxy Part B Hardener	20.105305-36	035777856840	650998941	1
4 Gallon — High Performance Garage Epoxy Part A Epoxy Gray Taupe	20.105306-19	035777856857	650998966	1
4 Gallon — High Performance Garage Epoxy Part A Epoxy Sand Taupe†	20.105307-19	035777856864	650998974	1

† Sell-through item.



H&C® COLORTOP™ WATER-BASED SOLID COLOR CONCRETE STAIN provides long-lasting, durable, decorative finish to interior or exterior concrete and masonry surfaces. Fortified with silicone, this easy-to-apply solid color stain comes in prepackaged colors and three tint base options.

FEATURES & BENEFITS:

- Decorates, seals and protects concrete surfaces
- Resistant to salts, acids, alkalis, water, mildew, UV rays, oil and wet or dry abrasion
- Water-based formulation
- Available in a variety of ready-to-use and tintable colors — see page 17
- Suitable for interior use, low odor
- Can be used on new or previously painted concrete surfaces with proper preparation, as well as on asphalt surfaces
- Satin finish

RECOMMENDED USES:

- Patios and walkways
- Vertical of stadium supports
- Vertical of bridges/structures
- Parking garages
- Laundry room floors
- Athletic courts
- Pool decks
- Precast concrete
- Tilt-up concrete
- Block

PRODUCT INFORMATION:

Description	SKU#	UPC#	SMIS #	Pack	Description	SKU#	UPC#	SMIS #	Pack
1 Gallon - Tint Base — Extra White	20.101214-16	035777228876	650711450	4	1 Gallon — Gull Gray	20.101284-16	035777228937	650711518	4
5 Gallon - Tint Base — Extra White	20.101215-20	035777228883	650711468	1	5 Gallon — Gull Gray**	20.101285-20	035777228944	650711526	1
1 Gallon - Tint Base — Deep	20.102214-16	035777229057	650711633	4	1 Gallon — Pearl Gray**	20.101314-16	035777228951	650711534	4
5 Gallon - Tint Base — Deep	20.102215-20	035777229064	650711641	1	5 Gallon — Pearl Gray	20.101315-20	035777228968	650711542	1
1 Gallon - Tint Base — Ultra Deep	20.103214-16	035777229118	650711690	4	1 Gallon — Silver Gray**	20.101344-16	035777228982	650711567	4
5 Gallon - Tint Base — Ultra Deep	20.103215-20	035777229125	650711708	1	1 Gallon — Terracotta	20.101354-16	035777228999	650711575	4
1 Gallon — Clear*	20.101204-16	035777328187	650923014	4	5 Gallon — Terracotta	20.101355-20	035777229002	650711583	1
5 Gallon — Clear*	20.101205-20	035777328194	650923022	1	1 Gallon — Tile Red	20.101364-16	035777229019	650711591	4
1 Gallon — Black	20.101224-16	035777228890	650711476	4	5 Gallon — Tile Red	20.101365-20	035777229026	650711609	1
5 Gallon — Black**	20.101225-20	035777228906	650711484	1	1 Gallon — Bombay	20.101254-16	035777228913	650711492	4
1 Gallon — Sandstone†	20.101324-16	035777228975	650711559	4	5 Gallon — Bombay	20.101255-20	035777228920	650711500	1

*Clear is not to be tinted.

**Special Order Only

† Sell-through item.

†† Coverage will vary depending on the porosity and texture of the surface.



COVERAGE & DRYING TIME:

Coverage††:	sq. ft./gal	Drying time, @ 77 °F, 50% RH:
Concrete floors	200-300	temperature and humidity dependent
Porous concrete	150-250	To touch: 30 minutes
Asphalt	200-250	Light traffic and recoat: 2 hours
Concrete block	100-150	Heavy traffic: 72-96 hours
Split-faced block	75-125	Full Cure: 7-14 days
Fluted block	50-100	
Brick (clay)	100-150	



Provide superior protection and beauty to both interior and exterior concrete and masonry surfaces with H&C® COLORTOP™ WATER-BASED SOLID COLOR CONCRETE STAIN 50. This formula bonds to concrete and forms a tough shield, so it doesn't fade, peel or flake like paint. Available in a variety of tintable colors, this easy-to-apply concrete stain is ideal for high-pH* surfaces and is nationally compliant.

FEATURES & BENEFITS:

- Decorates, seals and protects concrete surfaces
- Resistant to salts, acids, alkalis, water, mildew, UV rays, oil and wet or dry abrasion
- Water-based formulation
- Available in a variety of tintable colors — see page 17
- Suitable for interior or exterior use
- Low odor
- Can be used on new or previously painted concrete surfaces with proper preparation, as well as on asphalt surfaces
- Satin finish

RECOMMENDED USES:

- Patios and walkways
- Pool decks
- Concrete block
- Stucco walls
- Basement floors
- Laundry room floors



COVERAGE & DRYING TIME:

Coverage:	sq. ft./gal	Drying time, @ 77 °F, 50% RH:
Concrete floors	300-400	temperature and humidity dependent
Porous concrete	200-300	To touch: 1 hour
Asphalt	200-300	Recoat: 4 hours
Concrete block	100-150	Light foot traffic: 24 hours
Split-faced block	75-125	Tables, chairs and heavy traffic: 48 hours
Fluted block	50-100	Full cure: 7-14 days
Brick (clay)	100-150	

PRODUCT INFORMATION:

Description	SKU#	UPC#	SMIS	Pack
1 Gallon - Tint Base — Extra White	20.104414-16	035777229163	650711740	4
5 Gallon - Tint Base — Extra White	20.104415-20	035777229194	650711757	1
1 Gallon - Tint Base — Deep	20.104514-16	035777229187	650711765	4
5 Gallon - Tint Base — Deep	20.104515-20	035777229217	650711773	1
1 Gallon - Tint Base — Ultra Deep	20.104614-16	035777229200	650711781	4
5 Gallon - Tint Base — Ultra Deep	20.104615-20	035777229231	650711799	1

*High pH is over 10

COLORTOP™ SOLVENT-BASED SOLID COLOR CONCRETE SEALER



Create a beautiful landscape that is completely unique with H&C® COLORTOP™ SOLVENT-BASED SOLID COLOR CONCRETE SEALER. This opaque, waterproofing sealer is formulated to bond with exterior bare concrete and masonry surfaces. It provides a long-lasting yet decorative finish. COLORTOP SOLVENT-BASED SOLID is available in over 30 tintable colors and a variety of popular prepackaged semi-gloss colors, as well as clear, which has a gloss finish.

FEATURES & BENEFITS:

- Decorates, seals and protects bare concrete surfaces
- Solvent-based silicone acrylic formulation
- For use on bare exterior horizontal or vertical surfaces
- Resistant to salts, acids, alkalis, water, UV rays, oil, wet or dry abrasion and premature color loss
- Available in a variety of ready-to-use and tintable colors — see page 17
- Suitable for vehicular traffic

RECOMMENDED USES:

- Driveways
- Patios and walkways
- Pool decks
- Garage floors
- Concrete athletic courts
- Stadium supports
- Bridges/structures
- Parking garages
- Block and stucco walls

PRODUCT INFORMATION:

Description	SKU#	UPC#	SMIS	Pack	Description	SKU#	UPC#	SMIS	Pack	Description	SKU#	UPC#	SMIS	Pack
1 Gallon-Tint Base-Extra White	10.114014-16	035777228784	650711419	4	1 Gallon — Bombay	10.100054-16	035777228562	650711211	4	1 Gallon — Pearl Gray	10.100114-16	035777228678	650711310	4
5 Gallon-Tint Base-Extra White	10.114015-20	035777228821	650711427	1	5 Gallon — Bombay	10.100055-20	035777228579	650711229	1	5 Gallon — Pearl Gray	10.100115-20	035777228685	650711328	1
1 Gallon-Tint Base-Deep	10.116014-16	035777228838	650711435	4	1 Gallon — Brick Red	10.100064-16	035777228586	650711237	4	1 Gallon — Sandstone	10.100124-16	035777228692	650711336	4
5 Gallon-Tint Base-Deep	10.116015-20	035777228845	650711443	1	5 Gallon — Brick Red	10.100065-20	035777228593	650711245	1	5 Gallon — Sandstone	10.100125-20	035777228708	650711344	1
1 Gallon-Clear*	10.100004-16	035777328101	650922974	4	1 Gallon — Charcoal	10.100074-16	035777228616	650711252	4	1 Gallon — Silver Gray	10.100144-16	035777228715	650711351	4
5 Gallon-Clear *	10.100005-20	035777328118	650922982	1	5 Gallon — Charcoal	10.100075-20	035777228623	650711260	1	5 Gallon — Silver Gray	10.100145-20	035777228722	650711369	1
1 Gallon-Black	10.100024-16	035777230077	650711179	4	1 Gallon — Gull Gray	10.100084-16	035777228630	650711278	4	1 Gallon — Terracotta	10.100154-16	035777228739	650711377	4
5 Gallon — Black	10.100025-20	035777230084	650711187	1	5 Gallon — Gull Gray	10.100085-20	035777228647	650711286	1	5 Gallon — Terracotta	10.100155-20	035777228753	650711385	1
1 Gallon — Autumn Brown	10.100034-16	035777228548	650711195	4	1 Gallon — Patio Green	10.100104-16	035777228654	650711294	4	1 Gallon — Tile Red	10.100164-16	035777228760	650711393	4
5 Gallon — Autumn Brown	10.100035-20	035777228555	650711203	1	5 Gallon — Patio Green	10.100105-20	035777228661	650711302	1	5 Gallon — Tile Red	10.100165-20	035777228777	650711401	1

*Clear is not to be tinted.

†Coverage will vary depending on the porosity and texture of the substrate. **May vary by color.



COVERAGE & DRYING TIME:

Coverage†:

Concrete floors
Porous concrete
Concrete block
Split-faced block
Fluted block
Brick (clay)

sq. ft./gal

200-250
150-200
125-150
100-125
75-100
100-150

Drying time**, @ 77 °F, 50% RH:

temperature and humidity dependent

Touch: 15 minutes

Light traffic & recoat: 4 hours

Heavy traffic: 72-96 hours

Full cure: 7-14 days



H&C® COLORTOP™ SOLVENT-BASED SOLID COLOR CONCRETE SEALER 250 is H&C's Low VOC solvent-based sealer that provides a durable finish that extends the life of concrete and masonry surfaces. It penetrates deeply into the surface to form a tough shield, so it won't peel, fade or flake over time. It is resistant to salt, acids, alkalis, water, UV rays, oil and heavy traffic. Create a beautiful and expensive-looking landscape that is completely unique. Choose from our pre-mixed or custom-tinted colors.

FEATURES & BENEFITS:

- Decorates, seals and protects bare concrete surfaces
- For use on bare exterior horizontal or vertical surfaces
- Available in a variety of ready-to-use and tintable colors - see page 17
- Suitable for vehicular traffic
- Designed to be used on bare, unsealed concrete block, brick, stucco or any other masonry surface
- Satin finish preserves delicate architectural details
- <250 VOC version for most regulated areas

RECOMMENDED USES:

- Stadium supports
- Bridges and structures
- Parking garages
- Patios and walkways
- Block and stucco walls
- Driveways
- Pool decks
- Garage floors
- Concrete athletic courts

PRODUCT INFORMATION:

Description	SKU#	UPC#	SMIS	Pack	Description	SKU#	UPC#	SMIS	Pack	Description	SKU#	UPC#	SMIS	Pack
1 Gallon - Tint Base - White	30.114014-16	035777229439	650711997	4	1 Gallon - Sandstone**	30.101204-16	035777229279	650711831	4	1 Gallon - Patio Green**	30.101704-16	035777229354	650711914	4
5 Gallon - Tint Base - White	30.114015-20	035777229446	650712003	1	5 Gallon - Sandstone**	30.101205-20	035777229286	650711849	1	5 Gallon - Patio Green**	30.101705-20	035777229361	650711922	1
1 Gallon - Tint Base - Deep	30.116014-16	035777229477	650712011	4	1 Gallon - Black**	30.101404-16	035777229293	650711856	4	1 Gallon - Pearl Gray**	30.101804-16	035777229378	650711930	4
5 Gallon - Tint Base - Deep	30.116015-20	035777229484	650712029	1	5 Gallon - Black**	30.101405-20	035777229309	650711864	1	5 Gallon - Pearl Gray**	30.101805-20	035777229385	650711948	1
1 Gallon - Clear	30.100004-16	035777328132	650922990	4	1 Gallon - Tile Red**	30.101504-16	035777229316	650711872	4	1 Gallon - Silver Gray**	30.101904-16	035777229392	650711955	4
5 Gallon - Clear	30.100005-20	035777328149	650923006	1	5 Gallon - Tile Red**	30.101505-20	035777229323	650711880	1	5 Gallon - Silver Gray**	30.101905-20	035777229408	650711963	1
1 Gallon - Bombay**	30.101004-16	035777229255	650711815	4	1 Gallon - Terracotta**	30.101604-16	035777229330	650711898	4					
5 Gallon - Bombay**	30.101005-20	035777229262	650711823	1	5 Gallon - Terracotta**	30.101605-20	035777229347	650711906	1					

*Coverage will vary depending on the porosity and texture of the substrate. **Special order only.



COVERAGE & DRYING TIME:

Coverage*:	sq. ft./gal	Drying time, @ 77 °F, 50% RH:
Concrete floors	200-250	temperature and humidity dependent
Porous concrete	150-200	Touch: 15 minutes
Concrete block	125-150	Light foot traffic: 1 hour
Split-faced block	100-125	Light traffic & recoat: 12 hours
Fluted block	75-100	Heavy traffic: 72-96 hours
Brick (clay)	100-150	Full cure: 7-14 days

ACRYLA-DECK®

**WATER-BASED
SOLID COLOR
100% ACRYLIC DECK COATING**



Give your concrete decks and floors a long life with ACRYLA-DECK® WATER-BASED SOLID COLOR 100% ACRYLIC DECK COATING, a high-satin-sheen floor stain designed for interior and exterior residential, architectural, commercial and light-industrial spaces.

FEATURES & BENEFITS:

- Highly resistant to pool chemicals and many other household chemicals for long-lasting beauty and protection
- Water-based formulation allows for easier application and cleanup
- Excellent color retention and chalk resistance
- Outstanding resistance to blistering
- Available in a variety of tintable colors — see page 17

RECOMMENDED USES:

- Pool decks
- Patios
- Walkways
- Concrete floors
- Concrete decks

COVERAGE & DRYING TIME:

Coverage*:	sq. ft./gal	Drying time:	
Concrete floors	200-300	Touch:	1 hour
Porous concrete	150-250	Recoat:	4 hours
Concrete block	100-150	Light foot traffic:	2 hours
Split-faced block	75-125	Heavy traffic:	72-96 hours
Fluted block	50-100	Full cure:	7-14 days
Brick (clay)	100-150		
Asphalt	200-250		
Wood	250-350		

PRODUCT INFORMATION:

Description	SKU#	UPC#	SMIS	Pack
1 Gallon - Tint Base — Extra White	25.100214-16	035777311936	650902323	4
5 Gallon - Tint Base — Extra White	25.100215-20	035777311943	650902331	1
1 Gallon - Tint Base — Deep	25.100314-16	035777311967	650902356	4
5 Gallon - Tint Base — Deep	25.100315-20	035777318126	650910565	1

*Coverage will vary depending on the porosity and texture of the substrate.

COOL FEEL®

**WATER-BASED ACRYLIC
SOLID COLOR
HI-BUILD DECK & WALKWAY COATING**



H&C® COOL FEEL® WATER-BASED SOLID COLOR HI-BUILD DECK COATING WITH COMFORT STEP TECHNOLOGY™ reduces the temperature of concrete surfaces exposed to UV rays, making walking on your concrete surfaces more comfortable for people and pets*.

FEATURES & BENEFITS:

- Comfort Step Technology makes concrete pool decks, walkways and patios more comfortable to walk on by reducing the surface temperature.*
- Self-cross-linking acrylic creates a durable, protective finish
- Advanced stain resistance minimizes cleanup from foot steps, dirt and debris
- Resistant to pool chemicals and household chemicals for long-lasting beauty and protection
- Flat finish
- Available in a variety of tintable colors — see page 17

RECOMMENDED USES:

- Pool decks
- Patios
- Walkways
- Concrete decks

COVERAGE & DRYING TIME:

Coverage**:	sq. ft./gal	Drying time:	
Concrete floors	150-200	Touch:	1 hour
Porous concrete	150-250	Recoat:	2 hours
Concrete block	100-150	Light foot traffic:	2 hours
Split-faced block	75-125	Heavy traffic:	72-96 hours
Fluted block	50-100	Full cure:	7-14 days
Brick (clay)	100-150		
Asphalt	200-250		
Wood	250-350		

PRODUCT INFORMATION:

Description	SKU#	UPC#	SMIS	Pack
1 Gallon - Tint Base — Extra White	25.101414-16	035777880210	651042921	4
5 Gallon - Tint Base — Extra White	25.101415-20	035777880258	651043036	1
1 Gallon - Tint Base — Deep	25.101514-16	035777880296	651043085	4
5 Gallon - Tint Base — Deep	25.101515-20	035777880289	651043077	1

*Reduces surface temperature when compared to bare concrete. Amount of temperature reduction may differ due to: color choice, ambient temperature, time of day and the amount of direct sunlight on the surface.

**Coverage will vary depending on the porosity and texture of the substrate.



FIND YOUR INSPIRATION AT www.HCCONCRETE.com

HEAVY SHIELD®

WATER-BASED SOLID COLOR
CONCRETE & DRIVEWAY ENAMEL / STAIN



H&C® HEAVY SHIELD® CONCRETE & DRIVEWAY ENAMEL/STAIN is our best solid color, water-based stain designed to add deep penetrating protection and long-lasting beauty for both exterior and interior concrete. With superior cross-linking properties, H&C HEAVY SHIELD resists tire marking and hot tire pickup, provides excellent adhesion, abrasion protection, and chemical resistance while delivering a quality water-based stain that withstands vehicular traffic.

FEATURES & BENEFITS

- Provides a durable finish for excellent abrasion resistance that extends the life of concrete and masonry surfaces
- Highly resistant to garage, household and pool chemicals for long-lasting beauty and protection
- Water-based formulation allows for easier application and cleanup
- Can be applied to previously painted surfaces with proper preparation
- Withstands vehicular traffic, tire marking and hot tire pickup
- Semi-gloss finish
- Available in a variety of tintable colors — see page 17

RECOMMENDED USES

- Driveways
- Patios & walkways
- Pool decks
- Athletic courts
- Parking garages
- Block, precast concrete, tilt-up concrete
- Basement floors
- Laundry room floors

PRODUCT INFORMATION:

Description	SKU#	UPC#	SMIS#	Pack	Description	SKU#	UPC#	SMIS#	Pack
1 Gallon – Extra White	35.100214-16	035777848784	650990146	4	5 Gallon – Extra White	35.100215-20	035777848814	650990260	1
1 Gallon – Deep Base	35.100314-16	035777849309	650990757	4	5 Gallon – Deep Base	35.100315-20	035777849316	650990781	1
1 Gallon – Ultra Deep	35.100414-16	035777849330	650990807	4	5 Gallon – Ultra Deep	35.100415-20	035777849347	650990815	1



Colors shown: Sandstone HC157
Accent: Cemented Deal HC141

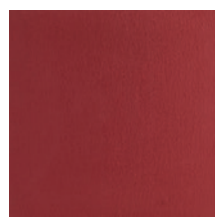
COVERAGE & DRYING TIME:

Coverage*:	sq. ft./gal	Drying time:	
Concrete floors	200-300	Touch:	30 minutes
Porous concrete	150-250	Light foot traffic:	2 hours
Concrete block	100-150	Heavy traffic:	48 hours
Split-faced block	75-125	Recoat	2 hours
Fluted block	50-100	Full cure:	7-14 days
Brick (clay)	100-150		

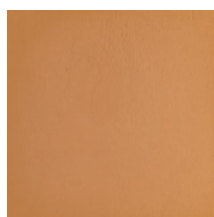
*Coverage will vary depending on the porosity and texture of the substrate.

POPULAR COLORS

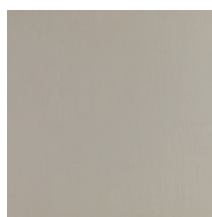
Don't see your perfect color? H&C® Solid Color Stains can be tinted to 100s of Sherwin-Williams colors.



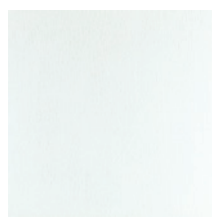
Tile Red* HC110



Terracotta Orange HC159



Sandstone HC157



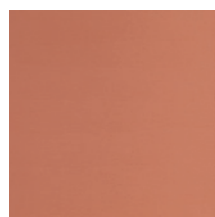
Hint of Gray HC156



Gray Horizons HC140



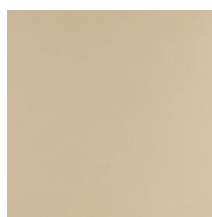
Extra White HC148



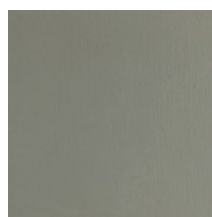
Naturally Red HC126



White-Washed Terracotta HC135



Bombay HC133



Muddy Gray HC172



Gull Gray HC132



Fall Grass HC145



Terra Cotta HC167



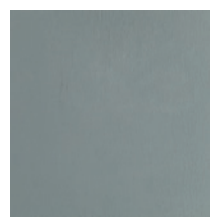
Aztec Sand HC136



Cemented Deal HC141



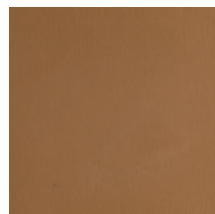
Autumn Brown* HC101



Pearl Gray HC164



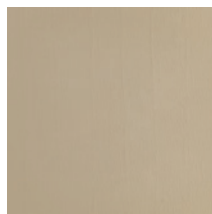
Patio Green* HC105



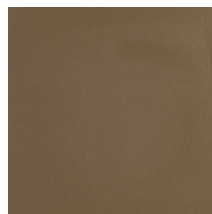
Cedarwood Brown HC103



Neutral Balance Tan HC125



Siberian Haze HC149



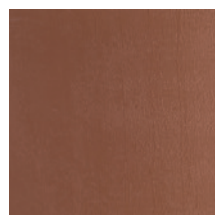
Charred Walnut HC109



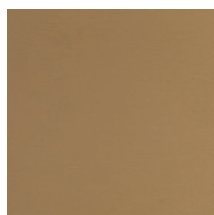
Silver Gray HC124



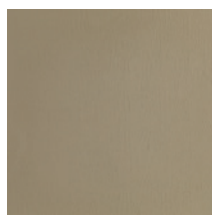
Bombay Breeze HC146



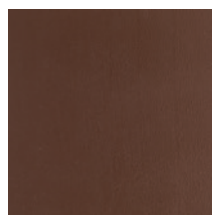
Red Terrazzo Tile HC102



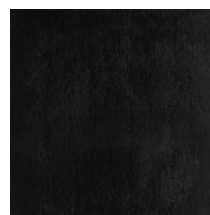
Silk Chocolate HC117



Fresh Concrete HC165



Cabernet Brown* HC107



Black* HC108



Drive-in Twilight HC155

*Not available in Cool Feel.

IMPORTANT: Color may vary slightly due to age, lighting, substrate variances or application conditions. Always perform a sample test area.





H&C® INFUSION® WATER-BASED SEMI-TRANSPARENT DECORATIVE STAIN lets you achieve a layered, faux or single-color look in less time than acid stains. Proper profiling (etching or grinding) is required prior to application to open the pores of the concrete. When layering stain, apply lighter colors first. To finish and complete the project, the stain must be sealed with an appropriate H&C clear coat.

FEATURES & BENEFITS:

- Available in 16 packaged colors
- Water-based formulation allows for easier application and cleanup
- UV resistant
- Can be dilute up to 4:1 with water for color variation and increased coverage rates
- Interior and exterior use
- Quick turnaround. Recoat or seal in 4–6 hours
- No neutralization required

RECOMMENDED USES:

- Pool decks
- Patios and walkways
- Garages
- Driveways
- Interior floors
- Commercial floors
- Basement floors

PRODUCT INFORMATION:

Description	SKU#	UPC#	SMIS	Pack	Description	SKU#	UPC#	SMIS	Pack	Description	SKU#	UPC#	SMIS	Pack
1 Gallon — Arctic Stone	45.102014-16	035777229491	650712037	2	1 Gallon — Cordovan	45.102064-16	035777229699	650712086	2	1 Gallon — Cork	45.102134-16	035777229897	650712151	2
1 Gallon — Tumbled Stone	45.102024-16	035777229507	650712045	2	1 Gallon — Henna	45.102074-16	035777229705	650712094	2	1 Gallon — Dewy Blade	45.102144-16	035777229903	650712169	2
1 Gallon — Obsidian	45.102034-16	035777229514	650712052	2	1 Gallon — Dahlia Red	45.102084-16	035777229729	650712102	2	1 Gallon — Moss	45.102154-16	035777229910	650712177	2
1 Gallon — Espresso	45.102044-16	035777229613	650712060	2	1 Gallon — Cardinal Red	45.102094-16	035777229828	650712110	2	1 Gallon — Marina Blue	45.102164-16	035777229927	650712185	2
1 Gallon — Cocoa Bean	45.102054-16	035777229668	650712078	2	1 Gallon — Pumpkin Spice	45.102104-16	035777229842	650712128	2					
1 Gallon — Gold Leaf	45.102124-16	035777229880	650712144	2	1 Gallon — Autumn Breeze	45.102114-16	035777229866	650712136	2					



COVERAGE & DRYING TIME:

Coverage*: 200 sq. ft./gal
Drying time: @ 77 °F 50% RH:
Temperature and humidity dependent
Recoat: 4-6 hours
Sealing: 4-6 hours

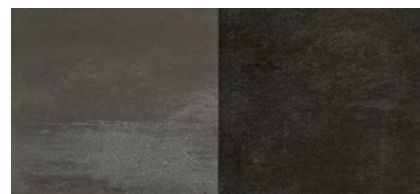
*Coverage will vary depending on paver porosity and texture.

AVAILABLE COLORS

These colors are a representation. Actual color will vary due to the concrete finishing method (how smooth or porous the surface is), producing a mottling or distressed appearance. Colors are on a gray concrete base and stain is diluted with water 1:1. Colors are representative of product used with a solvent-based sealer. Colors are not representative of the final result. Always test an inconspicuous area for color.

LEFT SIDE OF SWATCH:
ClariShield® Wet Look Water-Based Sealer

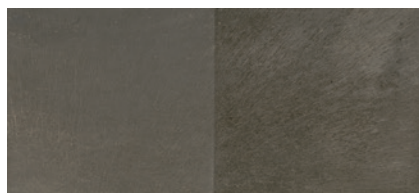
RIGHT SIDE OF SWATCH:
Infusion Decorative Solvent-Based Sealer



Obsidian



Arctic Stone



Tumbled Stone



Cordovan



Espresso



Cocoa Bean



Cardinal Red



Henna



Dahlia Red



Gold Leaf



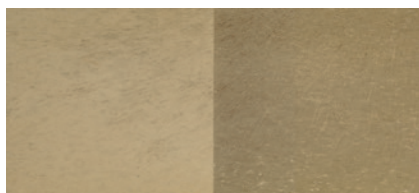
Pumpkin Spice



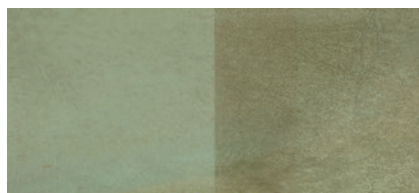
Autumn Breeze



Moss



Cork



Dewy Blade



Marina Blue



H&C® CLARISHIELD® OIL-BASED CONCRETE SEALER is an exterior waterproofing sealer that adds sheen and durability to both vertical and horizontal brick, stone, masonry and mortar- or epoxy-set natural stone. It can also be used as a sealer on flagstone, brick or other cementitious materials. It is suitable for use on traffic-bearing surfaces. It is designed for use over bare concrete or H&C® ColorTop™ Solvent-Based Solid Color Concrete Sealer. The non-yellowing clear surface protects against UV rays, water seepage and common chemicals.

FEATURES & BENEFITS:

- Seals and protects cement surfaces
- Provides a durable, glossy finish that extends the life of concrete and masonry surfaces
- Resists water, pool chemicals, UV rays, salt, alkalis, oil, gasoline and hot tire marks
- Low film build to maintain architectural details

RECOMMENDED USES:

- Driveways
- Patios and walkways
- Pool decks
- Garage floors
- Parking garages
- Concrete retaining walls
- Flagstone walls and walkways
- Masonry and brick walls
- Cement block

PRODUCT INFORMATION:

Description	SKU#	UPC#	SMS	Pack
1 Gallon	50.120234-16	035777229934	650712193	4
5 Gallon	50.120235-20	035777229941	650712201	1



COVERAGE & DRYING TIME:

Coverage:	200 sq. ft./gal	Drying time: @ 77 °F 50% RH:
Concrete floors	200-300	temperature and humidity dependent
Porous concrete	150-250	Touch: 30 minutes
Concrete block	100-150	Recoat: 4 hours
Split-faced block	75-125	Light foot traffic: Overnight
Fluted block	50-100	Heavy traffic: 72 hours
Brick (clay)	100-150	



It's easy to make bare and previously painted or stained concrete surfaces shine with H&C® CLARISHIELD® WATER-BASED WET LOOK CONCRETE SEALER. It provides a durable gloss finish that extends the life of concrete and masonry surfaces. The water-based formula leaves no messy residues, just an easy cleanup with soap and water. Stir in H&C® SHARKGRIP® SLIP-RESISTANT ADDITIVE to make inclined surfaces or damp areas safer.

FEATURES & BENEFITS:

- Can be used on bare or painted concrete and masonry surfaces*
- Ideal gloss finish over COLORTOP™ Water-Based Solid Color Concrete Stain
- Rolls on milky white and dries clear
- Penetrates deeply to form a tough shield
- Low film build to maintain architectural details
- Resists damage from water, salt, UV rays, oil, gasoline, cleaning agents and heavy traffic

RECOMMENDED USES:

- Driveways
- Patios and walkways
- Pool decks
- Garage floors
- Athletic courts
- Stadium supports
- Bridges and bridge structures
- Parking garages
- Block and stucco walls

COVERAGE & DRYING TIME:

Coverage:	200 sq. ft./gal	Drying time:	
Concrete floors	100-200	Touch:	1 hour
Concrete block	100-150	Recoat:	2 hours
Previously coated concrete		Light foot traffic:	24 hours
200-300		Heavy traffic:	72-96 hours
Porous concrete	100-200		
Porous decorative block	75-100		

PRODUCT INFORMATION:

Description	SKU#	UPC#	SMIS	Pack
1 Gallon	50.158154-16	035777229996	650712250	4
5 Gallon	50.158155-20	035777230008	650712268	1

*Test over previously painted surfaces.



H&C® CLARISHIELD® SOLVENT-BASED 250 CLEAR CONCRETE SEALER is a gloss sealer that enhances and protects bare concrete, previously coated and other masonry surfaces. It complies with ASTM C309 standard specifications for liquid membrane. With a VOC level less than 250 grams/liter, H&C CLARISHIELD SOLVENT-BASED 250 seals and protects cement surfaces from water, pool chemicals, UV rays and other harmful elements.

FEATURES & BENEFITS:

- Provides a durable, glossy finish that extends the life of concrete and masonry surfaces
- Crystal clear, non-yellowing
- Resists water, pool chemicals, UV rays, salt, alkalis, oil, gasoline and hot tire marks
- Can be used as a cure and seal when applied to freshly placed concrete. (Refer to product data sheet.)
- Low film build to maintain architectural details

RECOMMENDED USES:

- Driveways
- Patios and walkways
- Pool decks
- Garage floors
- Parking garages

COVERAGE & DRYING TIME:

Coverage:	200 sq. ft./gal	Drying time, @ 77 °F 50% RH:
Concrete floors	200-250	temperature and humidity dependent
Porous concrete	150-250	Touch:
Concrete block	100-150	30 minutes
Split-faced block	100-125	Recoat:
Fluted block	75-100	4 hours
Brick (clay)	100-150	Light foot traffic:
		Overnight
		Heavy traffic:
		72 hours

PRODUCT INFORMATION:

Description	SKU#	UPC#	SMIS	Pack
1 Gallon	30.102004-16	035777229415	650711971	4
5 Gallon	30.102005-20	035777229422	650711989	1



H&C® ULTRAPAVER® WATER-BASED PAVER SEALERS protect pavers from weed growth. Both Gloss and Natural protect and prolong the natural beauty only pavers can bring to an outdoor living area. H&C ULTRAPAVER applies milky white and dries clear to ensure complete coverage, and is extremely easy to apply. It provides excellent weather resistance, while protecting your investment against water damage. One gallon covers 100-150 square feet, depending on porosity. H&C ULTRAPAVER is solvent-free and VOC compliant.

FEATURES & BENEFITS:

- Provides protective coating to pavers
- Water and weather resistant
- Water-based formulation
- Paver sealer natural locks in joint sand
- Rolls on milky white, dries clear
- VOC compliant
- Withstands vehicular traffic
- Maintains natural look of pavers

RECOMMENDED USES:

- Patios and walkways
- Driveways
- Pool decks
- Brick or concrete pavers

COVERAGE & DRYING TIME:

Coverage*:

On standard concrete or masonry pavers: 100-150 sq. ft./gallon

Drying time:

Touch: 1 hour
Light foot traffic/recoat: 4 hours
Foot traffic: 24 hours
Heavy traffic: 72-96 hours

PRODUCT INFORMATION:

Description	SKU#	UPC#	SMIS	Pack
1 Gallon — Natural	50.146054-16	035777229958	650712219	2
5 Gallon — Natural	50.146055-20	035777229965	650712227	1
1 Gallon — Gloss	50.157054-16	035777229972	650712235	2
5 Gallon — Gloss	50.157055-20	035777229989	650712243	1



H&C® ULTRAPAVER® SOLVENT-BASED GLOSS PAVER SEALER is a premium quality sealer designed to rejuvenate the color in your pavers. Its deep penetrating xylene-based formula will solve efflorescence issues with its durable siliconized seal. For use on patios, driveways, pool decks, brick and retaining walls.

FEATURES & BENEFITS:

- Excellent water and weather-resistant properties for protection of your investment and to keep your pavers looking beautiful
- Solvent-based formula to enhance the color in your pavers
- Durable enough to withstand vehicular traffic
- Gloss finish for an aesthetically pleasing appearance

RECOMMENDED USES:

- Patios and walkways
- Lanais
- Driveways
- Pool decks
- Brick and concrete walls
- Retaining walls

COVERAGE & DRYING TIME:

Coverage*:

On standard concrete or masonry pavers: 100-150 sq. ft./gallon
High humidity and/or low temperatures will affect drying time.

Drying time:

Touch: 1 hour
Light foot traffic/recoat: 4 hours
Foot traffic: 24 hours
Heavy traffic: 72 hours

PRODUCT INFORMATION:

Description	SKU#	UPC#	SMIS	Pack
1 Gallon — Gloss	50.149054-16	035777328200	650923063	4
5 Gallon — Gloss	50.149055-20	035777328255	650923071	1
5 Gallon Florida — Gloss	50.150054-20	035777328286	650923089	1

*Coverage will vary depending on paver porosity and texture.



H&C® HYDRO-DEFEND® WATER-BASED CONCRETE & MASONRY WATERPROOFING SEALER is a non-film-forming, premium-quality water-based sealer that penetrates and protects aged, dry, porous surfaces. Because it penetrates, it resists water damage long after the water beading is gone. The durable, no sheen, acrylic formula can be used for both interior and exterior applications. This product is milky white when applied to ensure complete coverage, but dries to a clear, transparent coating.

FEATURES & BENEFITS:

- Interior and exterior use
- Protects against water damage
- Long wearing; easy to walk on
- Guards against repeated freeze/thaw cycles and damage from de-icing salts
- One coat is sufficient in most cases, but a second coat may be applied in 2-4 hours

RECOMMENDED USES:

- Concrete
- Stucco
- Concrete block
- Stone brick
- Patios
- Walkways
- Pool decks

COVERAGE & DRYING TIME:

Coverage*:	sq. ft./gal	Drying time:	
Concrete floors	200-300	Touch:	1 hour
Porous concrete	150-200	Recoat:	4 hours
Concrete block	50-75	Light foot traffic:	2 hours
Fluted block	75-100	Heavy traffic:	72 hours
Brick (clay)	100-150		
Precast concrete	125-175		

PRODUCT INFORMATION:

Description	SKU#	UPC#	SMIS	Pack
1 Gallon	50.143054-16	035777242438	650712334	2
5 Gallon	50.143055-20	035777242421	650712342	1

*Coverage will vary depending on the porosity and texture of the substrate.



H&C® HYDRO-DEFEND® CONCRETE & DRIVEWAY PROTECTOR is a non-film-forming repellent that provides a long-lasting, breathable barrier that resists dirt, salt, and other contaminants to minimize damage from freeze/thaw, spalling and water. It's a clear, water-based, 7% siloxane water repellent designed to protect bare concrete, driveways and masonry surfaces.

FEATURES & BENEFITS:

- Water-based formulation
- Protects against damaging freeze/thaw cycles
- Reduces intrusion of water, de-icing salts and other contaminants
- Penetrates deeply for long-lasting protection
- Will not alter the color appearance or texture of the treated surface
- User-friendly, soap and water cleanup

RECOMMENDED USES:

- Concrete
- Stucco
- Concrete block
- Stone
- Brick
- Patios
- Walkways
- Pool decks

COVERAGE & DRYING TIME:

Coverage*:	sq. ft./gal	Drying time:	
Concrete floors	150-200	Touch:	1 hour
Porous concrete	100-150	Light foot traffic:	2 hours
Split-faced block	50-75	Heavy traffic:	72-96 hours
Fluted block	75-100		
Brick (clay)	100-150		
Precast concrete	125-175		

PRODUCT INFORMATION:

Description	SKU#	UPC#	SMIS	Pack
1 Gallon	50.144154-16	035777242445	650712359	4
5 Gallon	50.144155-20	035777242452	650712367	1

*Coverage will vary depending on the porosity and texture of the substrate.

PRO PRODUCT CATEGORIES

**POLISHING
PRODUCTS**
25

**DECORATIVE
STAINS & DYES**
26-29

**COMMERCIAL CLEAR
SEALERS**
30-33

**METALLIC
FLOORING SYSTEM**
34-35

**CONCRETE
RESURFACERS**
36-41

COLOR PACKS
42-43

**COMMERCIAL
WATER REPELLENTS**
44-45



**H&C PRO
SERIES**



H&C® ENDURAPOLISH™ CLEAR LIQUID HARDENER & DENSIFIER is an amorphous colloidal silica solution designed to both harden and densify concrete. This proprietary formulation penetrates and reacts with concrete faster than conventional systems and produces a harder, more uniform surface. H&C ENDURAPOLISH CLEAR enhances stained or dyed concrete and is ideal for polished concrete applications. Additionally, it is commonly used as a dust proofer.

FEATURES & BENEFITS

- Densifies and hardens new and existing concrete
- Penetrates and reacts with concrete quickly
- Produces a more uniform surface
- Resists blushing and yellowing
- Increases life expectancy of concrete
- Easy to apply and maintain
- Easy to polish — minimizes labor costs
- Used as a dust-proofing agent on bare porous concrete

RECOMMENDED USES:

- Warehouses
- Retail outlets
- Distribution centers
- Showrooms
- Airports
- Commercial floors

COVERAGE & DRYING TIME:

Coverage: Concrete ground to 100-200 grit typically requires an application rate of approximately 400-500 sq. ft. per gallon.

Drying time:
Recoat: 30-60 mins
 (Must be dry to touch)
Light pedestrian traffic: 30-60 mins
Forklift and vehicle traffic: 2 hours

Maximum performance may take up to 14 days to develop, depending on temperature and humidity.

PRODUCT INFORMATION:

Description	SKU#	UPC#	SMIS	Pack
1 Gallon - Clear Liquid Hardener & Densifier	55.130034-16	035777330463	650924236	4
5 Gallon - Clear Liquid Hardener & Densifier	55.130035-20	035777330494	650924244	1



H&C® ENDURAPOLISH™ HI-GLOSS LITHIUM PROTECTIVE FINISH is a lithium-fortified, high-gloss finish designed to penetrate and protect polished concrete surfaces by increasing the hardness, improving stain resistance, and providing superior reflectivity when burnished. H&C ENDURAPOLISH HI-GLOSS chemically bonds to concrete and will never peel, flake or fade. It is recommended to high-speed burnish this product.

FEATURES & BENEFITS

- Protects polished concrete
- Increases concrete hardness
- Improves stain resistance
- Provides a highly reflective, streak-free surface
- Easy to apply and maintain
- Easy to polish — minimal labor cost

RECOMMENDED USES:

- Warehouses
- Retail outlets
- Distribution centers
- Showrooms
- Airports
- Commercial floors

COVERAGE & DRYING TIME:

Coverage: 1500-3000 sq. ft. per gallon high reflectivity 1500 + grit profiles (2500 sq. ft. first application/3000 sq. ft. second application).

Drying time:
To touch: 30 mins
Light pedestrian traffic: 30-60 mins
Forklift and vehicle traffic: 2 hours

PRODUCT INFORMATION:

Description	SKU#	UPC#	SMIS	Pack
1 Gallon - Lithium Protective Finish	55.130044-16	035777330524	650924251	4
5 Gallon - Lithium Protective Finish	55.130045-20	035777330531	650924269	1



H&C® INFUSION® ACETONE DYE STAINS achieve a layered, faux or single color look in a lot less time than acid stains. When not being utilized in a grinding and polishing type of application, etching is required prior to application to open pores of the concrete. When layering stain, apply lighter colors first. After all dye stain has been applied, use water to remove residue. As a final step, water-based or solvent-based sealers must be applied as topcoats when Acetone Dye is used in non-polishing applications.

FEATURES & BENEFITS

- Can be used along with integral and color hardeners
- Dry to touch in 30 minutes
- No neutralizing required
- Compact — very little shelf space
- Ideal for polished concrete or existing interior substrates
- The colors can be intermixed to create additional colors

RECOMMENDED USES:

- Retail stores and malls
- Interior floors
- Garage floors

PRODUCT INFORMATION:

Description	SKU#	UPC#	SMIS #	Pack	Description	SKU#	UPC#	SMIS #	Pack
Spanish Dagger	41.105001-99	035777329115	650923717	4	Ranch Hand Brown	41.105009-99	035777329344	650923816	4
Reno Gold	41.105002-99	035777329139	650923733	4	Cowboy Hat	41.105010-99	035777329474	650923907	4
Saddle Brown	41.105003-99	035777329146	650923741	4	Vegas Light	41.105011-99	035777329382	650923832	4
Prickly Cactus	41.105004-99	035777329160	650923758	4	Red Rock	41.105012-99	035777329399	650923840	4
Salsa Red	41.105005-99	035777329467	650923899	4	Adobe Red	41.105013-99	035777329405	650923857	4
Oasis	41.105006-99	035777329191	650923774	4	Stagecoach Brown	41.105014-99	035777329436	650923865	4
Canyon	41.105007-99	035777329214	650923782	4	Desert Orange	41.105015-99	035777329443	650923873	4
Tortoise Shell	41.105008-99	035777329238	650923808	4	Rattler's Brown	41.105016-99	035777329450	650923881	4



Colors shown: Spanish Dagger

COVERAGE & DRYING TIME:

Coverage*: 300-400 sq./ft. per gal.

Drying time:

Touch: 30 minutes

*Coverage will vary depending on the porosity and texture of the substrate.

AVAILABLE COLORS

Additional colors can be achieved by mixing the colors below. These colors are a representation. Actual color will vary due to the concrete finishing method (how smooth or porous the surface is), producing a mottling or distressed appearance.

LEFT SIDE OF SWATCH:

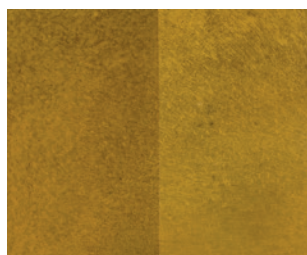
ClariShield® Wet Look
Water-Based Sealer

RIGHT SIDE OF SWATCH:

Infusion Decorative
Solvent-Based Sealer



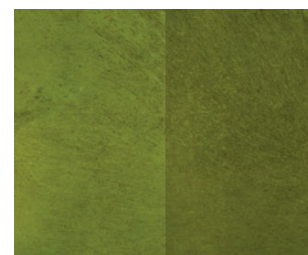
Spanish Dagger



Reno Gold



Saddle Brown



Prickly Cactus



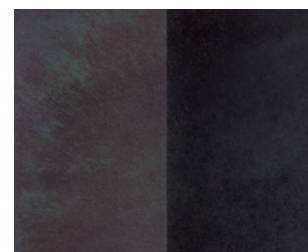
Salsa Red



Oasis



Canyon



Tortoise Shell



Ranch Hand Brown



Cowboy Hat



Vegas Light



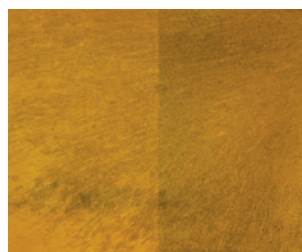
Red Rock



Adobe Red



Stagecoach Brown



Desert Orange



Rattler's Brown



H&C® INFUSION® REACTIVE CONCRETE STAINS are the artistic way of giving a translucent, variegated appearance to bare, horizontal new or existing concrete. Acid staining takes blank canvas of bare concrete and gives it an artistic flare. Acid stains accentuate any imperfections in the concrete like small cracks or contaminants. With H&C INFUSION Reactive, no two projects will ever be the same! As a final step, water-based or solvent-based sealers must be applied as topcoats when using H&C INFUSION Reactive. Additionally, H&C INFUSION Industrial Floor Finish can be used to complete the look and protect the floor.

FEATURES & BENEFITS

- Gives new and existing concrete a new, translucent, variegated appearance
- Long-lasting performance at a lower cost than other floor installations
- Multiple colored effects can be created
- Excellent for use in commercial, residential, institutional and industrial areas
- Solvent-based, water-based sealers and floor finish complete and protect the floor look

RECOMMENDED USES:

- Bare concrete indoor or outside a home
- Pool decks
- Patios and walkways
- Driveways
- Stores and malls
- Restaurants
- Office buildings

PRODUCT INFORMATION:

Description	SKU#	UPC#	SMIS	Pack	Description	SKU#	UPC#	SMIS	Pack	Description	SKU#	UPC#	SMIS	Pack
1 Gallon — Wenge Wood	40.102004-16	035777329498	650923915	4	1 Gallon — Potterswheel	40.102044-16	035777329603	650923998	4	1 Gallon — Sienna Red	40.102084-16	035777329900	650924079	4
5 Gallon — Wenge Wood**	40.102005-20	035777329504	650923923	1	5 Gallon — Potterswheel**	40.102045-20	035777329610	650924004	1	5 Gallon — Sienna Red**	40.102085-20	035777329917	650924087	1
1 Gallon — Rusted Fence	40.102014-16	035777329511	650923931	4	1 Gallon — Lido Blue	40.102054-16	035777329627	650924012	4	1 Gallon — Mustard Seed	40.102094-16	035777329924	650924095	4
5 Gallon — Rusted Fence**	40.102015-20	035777329528	650923949	1	5 Gallon — Lido Blue**	40.102055-20	035777329719	650924020	1	5 Gallon — Mustard Seed**	40.102095-20	035777329948	650924103	1
1 Gallon — Black Coffee	40.102024-16	035777329542	650923956	4	1 Gallon — Potato Ivy	40.102064-16	035777329764	650924038	4	1 Gallon — Midas Gold	40.102104-16	035777329955	650924111	4
5 Gallon — Black Coffee**	40.102025-20	035777329573	650923964	1	5 Gallon — Potato Ivy**	40.102065-20	035777329863	650924046	1	5 Gallon — Midas Gold**	40.102105-20	035777329979	650924129	1
1 Gallon — Crumbled Brick	40.102034-16	035777329580	650923972	4	1 Gallon — Verdant Plain	40.102074-16	035777329870	650924053	4	1 Gallon — Shore Gray	40.102114-16	035777329986	650924137	4
5 Gallon — Crumbled Brick**	40.102035-20	035777329597	650923980	1	5 Gallon — Verdant Plain**	40.102075-20	035777329894	650924061	1	5 Gallon — Shore Gray**	40.102115-20	035777330319	650924178	1

*Coverage will vary depending on the porosity and texture of the substrate. **Special order only.



COVERAGE & DRYING TIME:

Coverage*: 150-200 sq./ft. per gal.

Drying time: @ 77 °F 50% RH:

Temperature and humidity dependent

Recoat: 4 hours

Sealing: 24 hours after residue removal

Neutralization is only required once

AVAILABLE COLORS

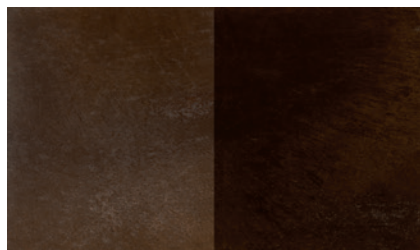
Additional colors can be achieved by intermixing the colors. These colors are a representation. Actual color will vary due to the concrete finishing method (how smooth or porous the surface is), producing a mottling or distressed appearance.

LEFT SIDE OF SWATCH:

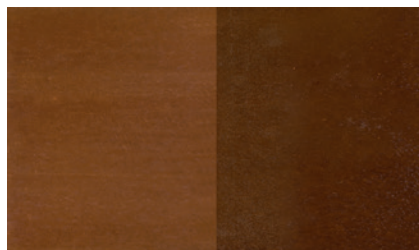
ClariShield® Wet Look
Water-Based Sealer

RIGHT SIDE OF SWATCH:

Infusion Decorative
Solvent-Based Sealer



Wenge Wood HC 400



Rusted Fence HC 401



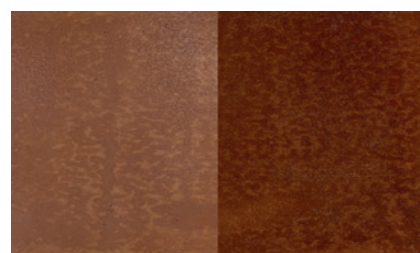
Black Coffee HC 402



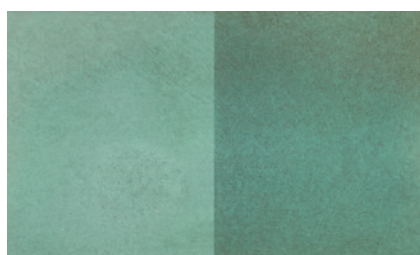
Crumbled Brick HC 403



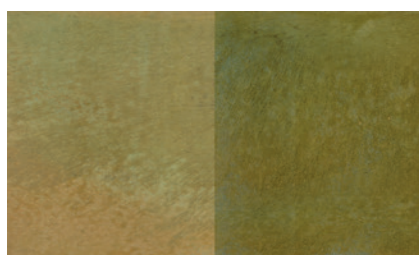
Potterswheel HC 404



Sienna Red HC 408



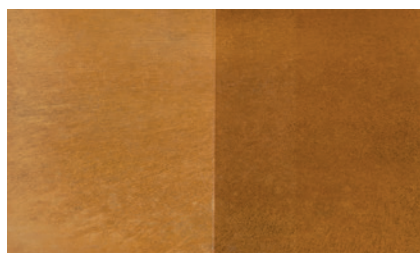
Potato Ivy (Interior Only) HC 406



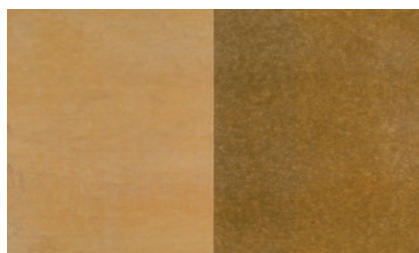
Verdant Plain (Interior Only) HC 407



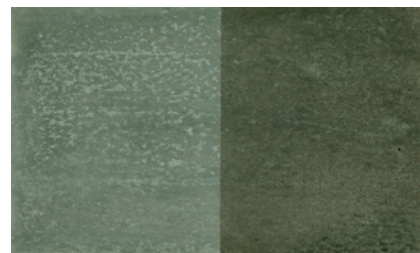
Lido Blue (Interior Only) HC 405



Mustard Seed HC 409



Midas Gold HC 410



Shore Gray HC 411

Always do a test area first. Lido Blue, Potato Ivy and Verdant Plain are for interior use only. Read all instructions and technical sheets prior to using H&C® INFUSION® REACTIVE CONCRETE STAINS AND SEALERS. These products are for professional use only.

INFUSION® SOLVENT-BASED CLEAR DECORATIVE CONCRETE SEALER



H&C® INFUSION® SOLVENT-BASED CLEAR DECORATIVE CONCRETE SEALER is a high solids sealer designed to add deep penetrating protection and long-lasting beauty to exterior concrete such as driveways, patios, walkways and garage floors. H&C Decorative Concrete Sealer is the perfect sealer for exterior decorative concrete projects, and is ideal for use with H&C Decorative Stains.

FEATURES & BENEFITS

- Ideal for decorative concrete applications
- High solids acrylic formulation
- Enhances color depth
- Durable, high gloss non-yellowing finish
- Inhibits hot tire pickup
- Easy application with excellent flow and leveling

RECOMMENDED USES:

- Patios and walkways
- Concrete driveways
- Pool decks
- Garage floors

COVERAGE & DRYING TIME:

Coverage*:	sq. ft./gal.	Drying time, @ 77 °F 50% RH:
Concrete floors	200-250	temperature and humidity dependent
Porous concrete	150-200	
Concrete block	125-150	Touch: 15 minutes
Brick (clay)	100-150	Light traffic/recoat: 4 hours
		Heavy traffic: 72-96 hours

PRODUCT INFORMATION:

Description	SKU#	UPC#	SMIS	Pack
1 Gallon — Clear Gloss Finish	50.100004-16	035777327944	650922891	4
5 Gallon — Clear Gloss Finish	50.100005-20	035777327982	650922917	1

*Coverage will vary depending on the porosity and texture of the substrate.

INFUSION® SOLVENT-BASED CLEAR WATER-BASED CLEAR INDUSTRIAL FLOOR FINISH



H&C® INFUSION® SOLVENT AND WATER-BASED SEALERS are designed to be used over the H&C INFUSION REACTIVE STAINS. Both aid in the protection of the surface as well as developing the color's brilliance.

H&C INFUSION INDUSTRIAL FLOOR FINISH is a tough and flexible metal cross-linked acrylic, formulated to dry to a brilliant gloss. This product is ideal for indoor high-traffic areas.

FEATURES & BENEFITS

- Long-lasting beauty and protection
- Solvent and water-based formulations
- Ideal for high-traffic areas
- High-gloss finish
- Use Industrial Floor Finish for added protection on interior floors

RECOMMENDED USES:

- Schools
- Office buildings
- Malls
- Retail stores
- Airports
- Factories
- Hospitals
- Hotels
- Restaurants

COVERAGE & DRYING TIME:

Coverage*:	sq. ft./gal.	Drying time, @ 77 °F 50% RH:
First coat	350-400	temperature and humidity dependent
Second coat	400	
		Touch: 20 minutes
		Light traffic/recoat: 4 hours
		Heavy traffic: 24 hours

PRODUCT INFORMATION:

Description	SKU#	UPC#	SMIS	Pack
1 Gallon — Solvent-Based Sealer†	40.101014-16	035777330357	650924194	4
5 Gallon — Solvent-Based Sealer†	40.101015-20	035777330432	650924210	1
1 Gallon — Water-Based Sealer†	40.101004-16	035777317594	650909625	4
1 Gallon — Industrial Floor Finish	40.101024-16	035777330333	650924186	4
5 Gallon — Industrial Floor Finish	40.101025-20	035777330388	650924202	1

*Coverage will vary depending on the porosity and texture of the concrete. † Sell-through item.



H&C® CLEARPROTECT® SOLVENT-BASED CURE AND SEAL gives green/fresh concrete the treatment it needs to survive and stay looking fresh. It's a solvent-based curing compound and sealer, formulated to help the hydration of newly placed concrete and provide long-lasting protection.

FEATURES & BENEFITS

- Cures green concrete to proper strength and reduces drying, shrinkage and cracking
- Penetrating sealer that extends the life of concrete and masonry surfaces
- Complies with USDA-inspected facilities
- Can be built to a high-gloss finish with multiple coats that dust proof concrete
- Resists damage from water, UV rays, pool chemicals, most cleaning agents and heavy traffic
- Product can be applied after bleed water evalopates

RECOMMENDED USES:

- Interior and exterior green concrete surfaces
- Use as a protective sealer on existing bare concrete driveways, walkways, patios and pool decks
- OTC Compliant with a non-yellowing formulation

COVERAGE & DRYING TIME:

Coverage:	sq. ft./gal.	Drying time, @ 77 °F 50% RH:
Porous concrete	150-250	temperature and humidity dependent
New concrete	200-300	Touch: 30 minutes
		Light foot traffic: Overnight
		Recoat: 4 hours
		Heavy traffic: 72 hours

PRODUCT INFORMATION:

Description	SKU#	UPC#	SMIS	Pack
1 Gallon — Clear	50.155014-16	035777317648	650909674	4
5 Gallon — Clear	50.155015-20	035777317655	650909682	1



H&C® CLEARPROTECT® HIGH PERFORMANCE INDUSTRIAL CLEAR COAT with its durable high-gloss finish, will enhance and protect previously coated, and bare concrete, as well as other masonry surfaces. It is a solvent-based sealer used for interior and exterior applications.

FEATURES & BENEFITS

- Impact and abrasion resistant
- Chemical resistant
- Resists yellowing
- Fast cure
- Outstanding application properties
- Complies with USDA food requirements

RECOMMENDED USES:

- Schools
- Warehouses
- Retail outlets
- Airport hangers
- Garage floors

COVERAGE & DRYING TIME:

Coverage*:	sq. ft./gal.	Drying time, @ 77 °F 50% RH:
Smooth-troweled concrete floors	330-500	temperature and humidity dependent
Previously stained surfaces	200-300	Touch: 2 hours
		Recoat: 9 hours min
		Heavy/vehicle traffic: 14 days max
		Full Cure: 72-96 hours
		3-6 days

PRODUCT INFORMATION:

Description	SKU#	UPC#	SMIS	Pack
1 Gallon — High Performance Clear Coat	50.170154-16	035777317624	650909658	4
5 Gallon — High Performance Clear Coat	50.170155-20	035777317631	650909666	1

*Coverage will vary depending on the porosity and texture of the substrate.



H&C® CLEARPROTECT® WATER-BASED 2-PART POLYURETHANE CLEAR COAT is a two-component, 60%-solids, breathable aliphatic urethane designed for use over concrete overlays and concrete and masonry substrates. H&C CLEARPROTECT WATER-BASED 2-PART POLYURETHANE is available in two finishes, Gloss and Satin.

NOTE: This is a catalyzed 3(19) : 1(B) product. H&C CLEARPROTECT 2-Part Polyurethane Clear Coat Part A (Clear) and Part B (Hardener) must be mixed prior to use.

FEATURES & BENEFITS

- Available in a gloss or satin finish
- Meets the strictest VOC regulations making it suitable for use in all states
- Breathable coating to minimize moisture entrapment and degradation of the coating
- Good chemical resistance to maintain performance of the coating
- Can be used in USDA-inspected facilities
- Excellent wear and adhesion properties
- Safe application for occupied buildings
- In 2-coat systems, apply a second coat while the first is tacky*

RECOMMENDED USES:

- Retail settings
- Museums
- Hotels
- Schools
- Offices
- Warehouses

COVERAGE & DRYING TIME:

Coverage*: 250-400 sq. ft./gal.
6-4 wet mils

Drying time, @ 72 °F, 50% RH at
10 mils (250 microns):

Touch: 4-6 hours
Recoat: 2 hours
Light foot traffic: 24 hours
Heavy traffic: 48-72 hours
Full cure: 7 days



PRODUCT INFORMATION:

MIX FOR 1 WORKING / CATALYZED GALLON

Description	SKU#	UPC#	SMIS #	Pack
1 Gallon — 2-Part Polyurethane Gloss A	50.11755A-16	035777467671	650964711	4
1 Quart — 2-Part Polyurethane Gloss B	50.11755B-14	035777467701	650964737	6
1 Gallon — 2-Part Polyurethane Satin A	50.11745A-16	035777467817	650964752	4
1 Quart — 2-Part Polyurethane Satin B	50.11745B-14	035777467824	650964760	6

MIX FOR 5 WORKING / CATALYZED GALLONS

Description	SKU#	UPC#	SMIS #	Pack
4 Gallon — 2-Part Polyurethane Gloss A †	50.11755A-19	35777467626	650964679	1
2 Gallon — 2-Part Polyurethane Gloss B †	50.11755B-36	035777467633	650964687	1
4 Gallon — 2-Part Polyurethane Satin A †	50.11745A-19	035777467640	650964695	1
2 Gallon — 2-Part Polyurethane Satin B †	50.11745B-36	035777467657	650964703	1

FULL FILL 1 GALLON

Description	SKU#	UPC#	SMIS #	Pack
1 Gallon — 2-Part Polyurethane Gloss B	50.11735B-16	035777328347	650923113	4
1 Gallon — 2-Part Polyurethane Satin B	50.11725B-16	035777328637	650923147	4

FULL FILL 5 GALLONS

Description	SKU#	UPC#	SMIS #	Pack
5 Gallon — 2-Part Polyurethane Gloss A	50.11735A-20	035777328323	650923097	1
5 Gallon — 2-Part Polyurethane Gloss B †	50.11735B-20	035777328330	650923105	1
5 Gallon — 2-Part Polyurethane Satin A	50.11725A-20	035777328460	650923121	1
5 Gallon — 2-Part Polyurethane Satin B †	50.11725B-20	035777328590	650923139	1

*Spiked shoes are acceptable. **Coverage will vary depending on porosity and texture of substrate.

† Sell-through item.



H&C® CLEARPROTECT® 2-PART SELF-LEVELING EPOXY CLEAR COAT is a 100% solids, two-component, self-leveling clear epoxy. It was formulated to create a durable, low-maintenance flooring surface, and can be used over H&C® concrete color treatments, such as INFUSION® ACETONE DYE, REACTIVE STAIN AND SEMI-TRANSPARENT STAIN. H&C CLEARPROTECT 2-PART SELF-LEVELING EPOXY is for interior use only.

NOTE: This is a catalyzed 2(A) : 1(B) product. H&C CLEARPROTECT 2-Part Self-Leveling Epoxy Clear Coat Part A (Clear) and Part B (Hardener) must be mixed prior to use.

FEATURES & BENEFITS

- Impact and abrasion resistant making it ideal for commercial applications
- Chemical resistant for added protection
- Complies with USDA requirements for food safety
- Durable and hard wearing for a low-maintenance system
- Available in high gloss for an aesthetically pleasing finish
- Excellent adhesion properties for long-lasting protection
- Self-leveling properties for ease of application
- Meets the strictest VOC regulations making it suitable for use in all states

RECOMMENDED USES:

- Retail settings
- Hotels
- Office spaces
- Museums
- Schools
- Warehouses
- Showrooms
- Commercial kitchens

COVERAGE & DRYING TIME:

Coverage*: 50-160 sq. ft./gal.
30-10 wet mils
60-70 sq. ft./gal. for Metallic Projects

Drying time, @ 72 °F, 50% RH:

Touch: 6-12 hours
Light foot traffic: 24 hours
Heavy traffic: 72 hours
Recoat: 8-24 hours
Full cure: 7 days

*Coverage will vary depending on porosity and texture of substrate.



PRODUCT INFORMATION:

FULL FILL 1 GALLON

Description	SKU#	UPC#	SMIS #	Pack
1 Gallon— 2-Part Self-Leveling Epoxy Clear Coat Part A	50.18065A-16	035777894347	651068926	4
1 Gallon— 2-Part Self-Leveling Epoxy Clear Coat Part B	50.18065B-16	035777894378	651068959	4

FULL FILL 5 GALLONS

Description	SKU#	UPC#	SMIS #	Pack
5 Gallon— 2-Part Self-Leveling Epoxy Clear Coat Part A	50.18045A-20	035777894804	651070062	1
5 Gallon— 2-Part Self-Leveling Epoxy Clear Coat Part B	50.18045B-20	03577789811	651070070	1

METALLIC FLOORING SYSTEM



H&C® PRO SERIES METALLIC SYSTEM features a durable basecoat, dynamic metallic coat and vibrant color options for a complete metallic flooring system. Leverage the H&C technology to enhance your creative and artistic skills to produce metallic floors that are a work of art. In addition, our self-leveling epoxy system provides durability, chemical resistance, and a high-gloss finish for maximum performance.

FEATURES & BENEFITS

- Vibrant metallic pigments in a variety of colors
- Complete system and sizes for all project needs
- Durable high-gloss finish for showroom results
- Chemical and impact resistant for maximum protection
- Self-leveling properties to achieve an even finish

RECOMMENDED USES:

- Concrete floors
- Basements
- Garage floors
- Interior use only



EPOXY BASECOATS:

MIX FOR 1 WORKING/CATALYZED GALLON

Description	SKU#	UPC#	SMIS #	Pack
1 Quart - Epoxy Basecoat - Part A	50.17075A-14	035777856970	650999048	4
1 Gallon - Epoxy Basecoat - Part B Black	50.17105B-16	035777857052	650999063	4
1 Gallon - Epoxy Basecoat - Part B Gray	50.17125B-16	035777857090	650999089	4

MIX FOR 4 WORKING/CATALYZED GALLONS

Description	SKU#	UPC#	SMIS #	Pack
1 Gallon - Epoxy Basecoat - Part A	50.17085A-16	035777856994	650999055	4
3 Gallon - Epoxy Basecoat - Part B Black	50.17115B-30	035777857076	650999071	1
3 Gallon - Epoxy Basecoat - Part B Gray	50.17135B-30	035777857106	650999097	1

EPOXIES:

FULL FILL 1 GALLON

Description	SKU#	UPC#	SMIS #	Pack
1 Gallon— 2-Part Self-Leveling Epoxy Clear Coat Part A	50.18065A-16	035777894347	651068926	4
1 Gallon— 2-Part Self-Leveling Epoxy Clear Coat Part B	50.18065B-16	035777894378	651068959	4

FULL FILL 5 GALLONS

Description	SKU#	UPC#	SMIS #	Pack
5 Gallon— 2-Part Self-Leveling Epoxy Clear Coat Part A	50.18045A-20	035777894804	651070062	1
5 Gallon— 2-Part Self-Leveling Epoxy Clear Coat Part B	50.18045B-20	03577789811	651070070	1

For additional topcoat options use H&C® Pro Series ClearProtect 2 Part PolyUrethane Satin or Gloss or H&C® Pro Series ClearProtect 2 Part Self-Leveling Epoxy Clear Glaze.

METALLIC

FLOORING SYSTEM COLOR PALETTE



Silver



Crystal



Diamond



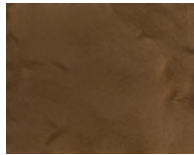
Gem



Orange Beryl



Slate Onyx



Smoke Topaz



Rose Gold



Jasper



Sapphire



Ruby



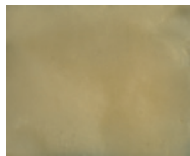
Black Diamond



Champagne



Smokey Onyx



Fossil



Smoky Quartz**



Blue Topaz**



Aquamarine**



Orange Sapphire**



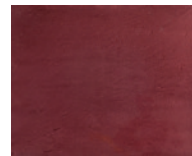
Amethyst**



Topaz**



Peridot



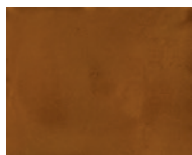
Garnet**



Chocolate Diamond**



Copper**



Siam**



Fire Opal**



Gold**



Tiger's Eye



Amber**

METALLIC PIGMENTS:

Description	SKU#	UPC#	SMIS	Pack	Description	SKU#	UPC#	SMIS	Pack	Description	SKU#	UPC#	SMIS	Pack
Silver	20.104301-41	035777854242	650995624	2	Ruby	20.104311-41	035777854426	650995749	2	Topaz**	20.104321-41	035777854556	650995848	2
Crystal	20.104302-41	035777854303	650995657	2	Black Diamond	20.104312-41	035777854433	650995756	2	Peridot	20.104322-41	035777854563	650995855	2
Diamond	20.104303-41	035777854310	650995665	2	Champagne	20.104313-41	035777854440	650995764	2	Garnet**	20.104323-41	035777854570	650995863	2
Gem	20.104304-41	035777854327	650995673	2	Smokey Onyx	20.104314-41	035777854457	650995772	2	Chocolate Diamond**	20.104324-41	035777854587	650995871	2
Orange Beryl	20.104305-41	035777854334	650995681	2	Fossil	20.104315-41	035777854464	650995780	2	Copper**	20.104325-41	035777854594	650995889	2
Slate Onyx	20.104306-41	035777854358	650995699	2	Smoky Quartz**	20.104316-41	035777854471	650995798	2	Siam**	20.104326-41	035777854600	650995897	2
Smoke Topaz	20.104307-41	035777854365	650995707	2	Blue Topaz**	20.104317-41	035777854488	650995806	2	Fire Opal**	20.104327-41	035777854617	650995905	2
Rose Gold	20.104308-41	035777854372	650995715	2	Aquamarine**	20.104318-41	035777854501	650995814	2	Gold**	20.104328-41	035777854624	650995913	2
Jasper	20.104309-41	035777854396	650995723	2	Orange Sapphire**	20.104319-41	035777854525	650995822	2	Tiger's Eye	20.104329-41	035777854631	650995921	2
Sapphire	20.104310-41	035777854419	650995731	2	Amethyst**	20.104320-41	035777854549	650995830	2	Amber**	20.104330-41	035777854648	650995939	2

**Special Order Only



DURA-TOP®

SINGLE-COMPONENT INSTANT & HEAVY TEXTURE CONCRETE RESURFACER



H&C® DURA-TOP® SINGLE COMPONENT INSTANT & HEAVY TEXTURE CONCRETE RESURFACERS have excellent adhesion and are cooler than regular concrete. They resist mildew and are skid resistant. The heavy-traffic resurfacer is freeze/thaw resistant. This low-maintenance, abrasion-resistant polymer allows for multiple overcoat options, like any of H&C's stains or sealers. Apply with a hopper gun for a knockdown appearance, or pour on and trowel down for a smooth finish.

INSTANT RESURFACER FEATURES & BENEFITS:

- Create a decorative cementitious texture to existing concrete surfaces
- Interior and exterior use
- Stainable with H&C® COLORTOP™ Concrete Sealer Solvent-Based or H&C COLORTOP Concrete Stain Water-Based
- 50 lb. bag covers up to 150 sq. ft.

HEAVY TRAFFIC FEATURES & BENEFITS:

- Suitable for vehicular traffic
- Durable attractive finish that enhances all landscapes
- Interior and exterior use
- Low maintenance
- 50 lb. bag covers up to 150 sq. ft.

RECOMMENDED USES:

- Patios and walkways
- Garage floors
- Lanais
- Driveways
- Pool decks

PRODUCT INFORMATION:

Description	SKU#	UPC#	SMIS #	Pack	Description	SKU#	UPC#	SMIS #	Pack
50 lb. Bag — Instant Texture	60.100209-50	035777324325	650920705	1	50 lb. Bag — Heavy Texture	60.100109-50	035777324332	650920713	1



COVERAGE & DRYING TIME:

Coverage:

One 50 lb. (22.7 kg) bag will cover up to 150 sq. ft. (13.9 sq m2) in a splatter or knockdown finish. Coverage depends upon texture finish desired.

Texture will require a minimum of 4 hours before topcoating. If temperatures are below 50 °F (10 °C) the textured surface will require a minimum of 24 hours drying before application of any topcoat.



H&C® DURA-TOP® DUAL-COMPONENT TEXTURE CONCRETE RESURFACER along with TEXTURE RESIN AND BOND COAT are a durable, skid-resistant, 2-component system designed for plain or unsightly concrete surfaces. Designed to withstand freeze/thaw cycles.

FEATURES & BENEFITS

- Create a decorative cementitious texture to existing concrete surfaces
- Interior and exterior use
- Stainable with H&C® COLORTOP™, H&C® ACRYLA-DECK® or H&C® HEAVY SHIELD® products
- 50 lb. bag covers up to 150 sq. ft.
- H&C DURA-TOP TEXTURE RESIN & BOND COAT is a concentrate. A 5-gallon pail of product can be mixed with up to 10 gallons of water

RECOMMENDED USES:

- Ideal for driving and walking surfaces
- Low maintenance, abrasion resistant
- Excellent adhesion

PRODUCT INFORMATION:

Description	SKU#	UPC#	SMIS #	Pack	Description	SKU#	UPC#	SMIS #	Pack
50 lb. Bag – Dual Component Texture	60.100409-50	035777324356	650920747	1	5 Gallon Pail – Texture Resin	60.100309-20	035777388136	650937030	1



COVERAGE & DRYING TIME:

Coverage:
One 50 lb. bag

100-150 sq. ft.

Drying time:
Allow the H&C DURA-TOP Concrete Resurfacer Dual Component Texture to dry 24 hours before application of any concrete sealer, stain/sealer or coating.

DURA-TOP®

SINGLE-COMPONENT STAMPABLE OVERLAY & LIQUID RELEASE



H&C® DURA-TOP® STAMPABLE OVERLAY is used to resurface driveways, patios, pool areas, malls, theme parks, parking lots, interiors and exteriors. It helps turn your ordinary concrete into beautiful works of art. To finish the project, a film-forming coating is recommended for protection.

H&C DURA-TOP LIQUID RELEASE is a blend of evaporating, residue-free release agents for use in the imprinting process to allow the clean release of texturing tools from concrete or overlay surfaces.

FEATURES & BENEFITS

- Stampable cementitious topping for interior or exterior surfaces
- Use with H&C's color packs
- Suitable for any climate, freeze/thaw cycles and traffic-bearing surfaces
- Use with H&C's new DURA-TOP Liquid Release product for a beautiful, unique look
- One 50 lb. bag covers approximately 20 sq. ft. at 1/4 inch
- Fiber reinforced

RECOMMENDED USES:

- Driveways
- Retail settings
- Pool decks and patios
- Parking decks
- Sidewalks
- Garage floors

PRODUCT INFORMATION:

Description	SKU#	UPC#	SMIS	Pack
50 lb. Bag — Stampable Overlay	60.100509-50	35777324998	650921422	1
5 Gallon Pail — Liquid Release	60.100809-20	035777325001	650921430	1



COVERAGE & DRYING TIME:

Coverage:

One 50 lb. bag of Stampable Overlay covers:
15 sq. ft. @ 3/8"
20 sq. ft. @ 1/4"
Exceeding 3/8" can lead to cracking

This drying time should range from thirty (30) minutes to two (2) hours depending on thickness and weather conditions. Indoors, shaded areas or areas without air circulation, and material placed in cold temperatures may take significantly longer to set.

Drying time, @ 77 °F 50% RH:



H&C® DURA-TOP® BROOM FINISH REPAIR is perfect for salt-damaged driveways and sidewalks. It's a cementitious non-slip surface that goes on very thin and has the typical broomed concrete look. It can be used with any H&C Color Pack to provide additional color options.

FEATURES & BENEFITS

- Trowel and squeegee-applied topping for interior or exterior surfaces
- Ability to slope and fill spalls and low areas
- High impact, abrasion resistant and aids in slip resistance
- Finish coat is ready to be sealed to protect against staining
- Add H&C's DURA-TOP Color Packs for additional color*

*Broom Finish Repair uses a gray portland cement so final color will vary from the color chart.

RECOMMENDED USES:

- Driveways
- Parking decks
- Pool decks
- Patios and walkways
- Sidewalks

PRODUCT INFORMATION:

Description	SKU#	UPC#	SMIS	Pack
50 lb. Bag – Broom Finish Repair	60.100609-50	035777325797	650922065	1



COVERAGE & DRYING TIME:

Coverage*:

One 50 lb. bag of H&C DURA-TOP Concrete Resurfacer Broom Finish Repair covers: 180-200 sq. ft. @ 1/16"-1/32" 2 coats recommended

As product dries, scrape and use leaf blower to remove loose material.

To complete the installation, two thin coats of H&C® CLARISHIELD® or H&C® COLORTOP™.

Solvent or Waterborne Sealer are required.

* Coverage will vary depending on the porosity and texture of the concrete.

DURA-TOP® MICRO-TOPPING CONCRETE RESURFACER



H&C® DURA-TOP® MICRO-TOPPING CONCRETE RESURFACER is a polymer-modified, thin, cementitious topping ideal for interior applications. The single-component formulation requires only the addition of water, making it easy to use.

FEATURES & BENEFITS

- Can be applied in a single-coat application, saving time and money
- Used in conjunction with H&C stains to achieve a variety of unique colors and finishes
- Durable and cost-effective solution to replacing old, worn concrete
- Finely blended aggregate for a smooth, aesthetically pleasing finish
- Self bonding, single component, just add water
- Freeze/thaw resistant

RECOMMENDED USES:

- Hotels/foyers
- Office floors
- Museums
- Malls
- Concrete floor restoration projects

COVERAGE & DRYING TIME:

Coverage*:

One 50 lb. bag of H&C DURA-TOP Concrete Resurfacer Micro-Topping Texture will cover 180-200 sq. ft./coat — approx. 1/16"-1/32". Do not exceed 1/8" per placement. Two coats may be required on rough or pitted surfaces.

Drying time, @ 77 °F 50% RH:

temperature and humidity dependent
Initial set: 8 hours
Staining: 12 hours
Recoat: 8 hours
Foot traffic: 24 hours
Heavy traffic: 72 hours

PRODUCT INFORMATION:

Description	SKU#	UPC#	SMIS	Pack
50 Lb. Bag – Micro-Topping Texture	60.100909-50	035777325322	650922040	1

*Coverage will vary depending on the porosity and texture of the concrete.

DURA-TOP® FLORIDECK CONCRETE RESURFACER



H&C® DURA-TOP® FLORIDECK CONCRETE RESURFACER resists skid marks, mildew and abrasion. This product is ideal for vehicular traffic.

FEATURES & BENEFITS

- Premium polymer for use in single-component, cementitious textured products
- Ideal for driving and walking surfaces
- Excellent adhesion promoter
- Low maintenance, abrasion resistant

RECOMMENDED USES:

- Patios
- Walkways
- Pool decks
- Lanais
- Driveways
- Garage floors

COVERAGE & DRYING TIME:

Coverage*:

One 50 lb. bag of H&C® DURA-TOP® Concrete Resurfacer Florideck Texture will cover 180-200 sq. ft./coat- approx. 1/16"-1/32". Do not exceed 1/8" per placement. 2 coats may be required on rough or pitted surfaces.

Texture will require a minimum of 4 hours before topcoating. If temperatures are below 70 °F (21 °C) the textured surface will require a minimum of 24 hours drying before application of any topcoat. A sufficiently dried texture system will not leave a thumbnail impression in the surface.

PRODUCT INFORMATION:

Description	SKU#	UPC#	SMIS	Pack
50 Lb. Bag – Florideck Texture	60.100119-50	035777325759	650922057	1

*Coverage will vary depending on the porosity and texture of the concrete.



H&C® DURA-TOP® FINE CONCRETE RESURFACER resists skid marks, mildew and abrasion. This product is ideal for vehicular traffic.

FEATURES & BENEFITS

- Fine texture for smooth lower profile
- Slower setup time for hot and humid climates
- Can be used in conjunction with H&C® stains to achieve a variety of unique colors and finishes
- Durable and cost-effective solution to replacing old, worn concrete
- Accepts H&C DURA-TOP Color Packs

RECOMMENDED USES:

- Patios
- Walkways
- Pool decks
- Lanais
- Driveways

PRODUCT INFORMATION:

Description	SKU#	UPC#	SMIS	Pack
50 lb. Bag - Fine Texture	60.101109-50	035777526453	650975576	1



COVERAGE & DRYING TIME:

Coverage*:

One 50 lb. bag of H&C DURA-TOP Concrete Resurfacer Fine Texture will cover 250 sq. ft./coat- approx. 1/16" - 1/32". Do not exceed 1/8" per placement. Two coats may be required on rough or pitted surfaces.

Texture will require a minimum of 4 hours before topcoating. If temperatures are below 70 °F (21 °C) the textured surface will require a minimum of 24 hours drying before application of any topcoat. A sufficiently dried texture system will not leave a thumbnail impression in the surface.

*Coverage will vary depending on the porosity and texture of the concrete.



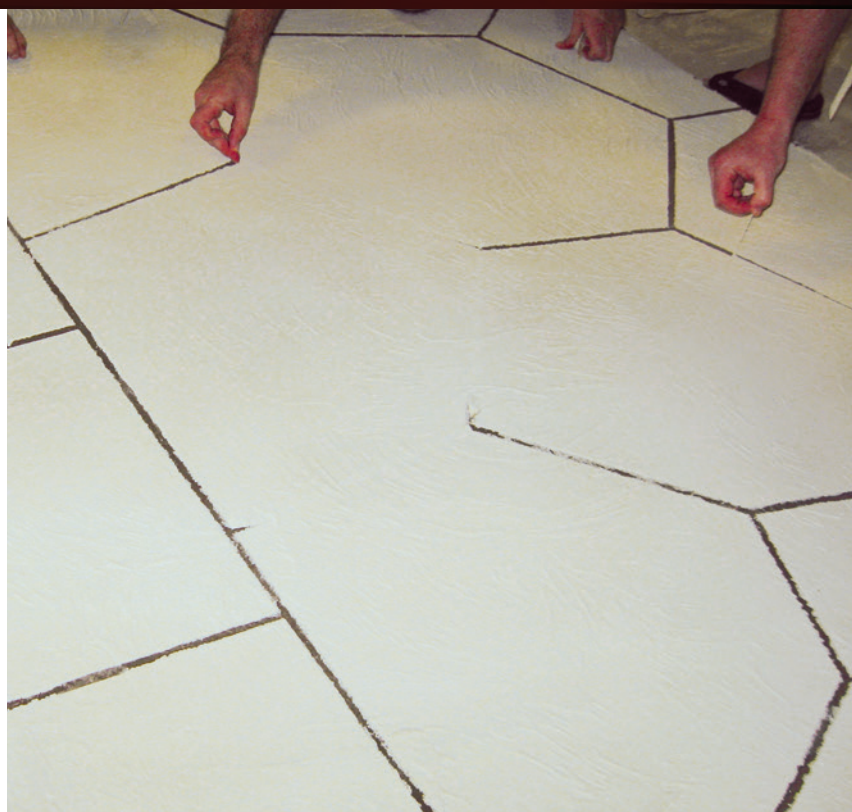
Get creative with H&C® DURA-TOP® CONCRETE RESURFACERS COLOR PACKS. Choose from 30 one-pound, pre-measured and vibrant color packs to add color to any H&C Concrete Resurfacer or Overlay. Our color packs allow you to achieve instant color and effects without the need to add stain. It's that easy.

FEATURES & BENEFITS

- Instant color — no need to add stain
- Available in 30 one-pound, pre-measured color packs
- Clear sealer over textures will enhance the color even more
- Easy to use with our H&C system; we recommend one color pack per 50 lb. bag

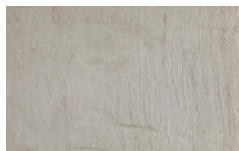
PRODUCT INFORMATION:

Description	SKU#	UPC#	SMIS #	Pack	Description	SKU#	UPC#	SMIS #	Pack
Birch Bark	60.100001-99	035777324370	650920762	12	Blank Canvas	60.100016-99	035777324554	650920945	12
Bamboo	60.100002-99	035777324387	650920770	12	Alabaster	60.100017-99	035777324561	650920952	12
Dried Sage†	60.100003-99	035777324394	650920788	12	Cemented Deal	60.100018-99	035777324578	650920960	12
Thistle†	60.100004-99	035777324400	650920796	12	Siberian Haze	60.100019-99	035777324585	650920978	12
Gullie Blue†	60.100005-99	035777324417	650920804	12	Natural Cork	60.100020-99	035777324592	650920986	12
Hot Mauve†	60.100006-99	035777324424	650920812	12	Buckhead Brown	60.100021-99	035777324608	650920994	12
Copper Penny†	60.100007-99	035777324431	650920820	12	Maple†	60.100022-99	035777324615	650921000	12
Canyon Clay†	60.100008-99	035777324448	650920838	12	Bold Bark†	60.100023-99	035777324622	650921018	12
Paprika†	60.100009-99	035777324455	650920846	12	Black Walnut†	60.100024-99	035777324639	650921026	12
Brickwork Red†	60.100010-99	035777324462	650920853	12	Coffee Bean	60.100025-99	035777324646	650921034	12
Cotton Ball	60.100011-99	035777324493	650920887	12	Brushed Steel	60.100026-99	035777324653	650921042	12
Tweed	60.100012-99	035777324509	650920895	12	Gadget Gray†	60.100027-99	035777324660	650921059	12
Sandstone	60.100013-99	035777324516	650920903	12	City Sidewalk	60.100028-99	035777324677	650921067	12
Soapstone	60.100014-99	035777324523	650920911	12	Solitude	60.100029-99	035777324684	650921075	12
Fawn	60.100015-99	035777324530	650920929	12	Pepper Black	60.100030-99	035777324707	650921091	12



AVAILABLE COLORS

These colors are a representation. Actual color will vary due to the concrete finishing method (how smooth or porous the surface is), producing a mottling or distressed appearance.



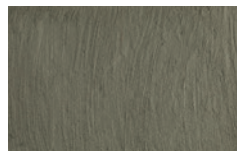
Birch Bark



Bamboo



Dried Sage†



Thistle†



Gullie Blue†



Hot Mauve†



Copper Penny†



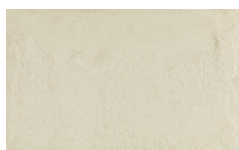
Canyon Clay†



Paprika†



Brickwork Red†



Cotton Ball



Tweed



Sandstone



Soapstone



Fawn



Blank Canvas



Alabaster



Cemented Deal



Siberian Haze



Natural Cork



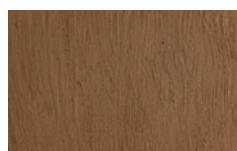
Buckhead Brown



Maple†



Bold Bark†



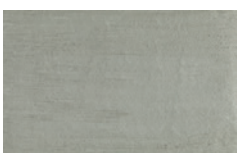
Black Walnut†



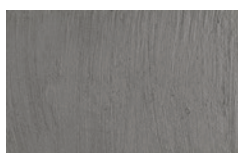
Coffee Bean



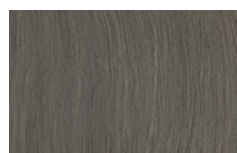
Brushed Steel



Gadget Gray†



City Sidewalk



Solitude



Pepper Black

†Sell-through item.





H&C® HYDRO-DEFEND® SILANE SL-40 WATER REPELLENT is a high-performance water repellent that penetrates into the substrate and provides long-term weatherproofing protection. It's a single component product that is ready to use and typically requires only one application. SL-40 will not darken the surface or leave a visible surface film. SL-40 penetrates deep into the surface to chemically react with and bond to it.

H&C HYDRO-DEFEND SILOXANE SX-7 WATER REPELLENT is designed to weatherproof old and new concrete and masonry surfaces against nature's destructive forces. It provides a long-lasting breathable barrier that resists cracking, airborne dust and dirt, salt, efflorescence and spalling. SX-7 is a 7% siloxane that penetrates deep into the surface to chemically react with and bond to it.

HYDRO-DEFEND SL-40 FEATURES & BENEFITS:

- Can be reopened to foot traffic within one hour
- Will not change the traction of skid-resistant horizontal surfaces
- Prevents damage from ice and de-icing salts and chloride ions

HYDRO-DEFEND SX-7 FEATURES & BENEFITS:

- Safe application to occupied buildings
- Lasting protection on vertical and horizontal surfaces
- Alkaline resistant

RECOMMENDED USES:

- Must be applied to bare surfaces
- Traffic sound barriers
- Driveways
- Cast in place concrete
- Precast concrete
- Exposed aggregate
- Brick and mortar
- Stucco and sandstone
- Architectural concrete block



COVERAGE & DRYING TIME:

Coverage*:	sq. ft./gal.		
Smooth precast concrete	125-175	Fluted block	50-75
Cast-in-place	100-150	Brick (Clay)	100-150
Precast concrete	125-150	Stucco	100-150
Exposed aggregate	100-150	Sandstone	75-125
Split-faced block (CMU) **	50-75	Steel-troweled concrete	150-200

Drying time, @ 72 °F, 50% RH:

Touch:	1 hour	Light foot traffic:	2 hours
Recoat:	24 hours	Heavy traffic:	72 hours

PRODUCT INFORMATION:

Description	SKU#	UPC#	SMIS	Pack
5 Gallon - SL-40 Silane Water Repellent - Clear	50.145055-20	035777328088	650922958	1
5 Gallon - SX-7 Siloxane Water Repellent - Clear	50.144055-20	035777328095	650922966	1

*Coverage will vary depending on the porosity and texture of the substrate.

**Lightweight split-faced block may require a film-forming product due to its extreme porosity.



H&C® HYDRO-DEFEND® SILOXANE HB-100 AND SILOXANE HB-150 WATER REPELLENTS are designed to weatherproof old and new concrete and masonry surfaces against nature's destructive forces. They provide a long-lasting, breathable barrier that resists cracking, airborne dust and dirt, salt, efflorescence and spalling.

FEATURES & BENEFITS:

- A mineral spirits-based water repellent
- Invisible no-film finish
- Can be stained over
- HB-100 is a 10% siloxane
- HB-150 is a 15% siloxane

RECOMMENDED USES:

- Concrete walls
- Precast concrete
- Poured concrete
- Brick
- Highways
- Bridge decks
- Cement floors
- Roof tile

PRODUCT INFORMATION:

Description	SKU#	UPCH	SMIS	Pack
5 Gallon - HB-100 Water Repellent - Clear	50.140105-20	035777328033	650922925	1
5 Gallon - HB-150 Water Repellent - Clear	50.140155-20	035777328071	650922933	1



COVERAGE & DRYING TIME:

Coverage*:	sq. ft./gal.		
Porous concrete	150-200	Roof tiles	25-50
Split-faced block**	200-300	Bridge decks	100-150
Fluted block	25-50	Steel-troweled concrete	150-200
Concrete block	75-125	Precast concrete	125-175
Brick (clay)	100-150		
Drying time, @ 72 °F, 50% RH:			
Touch:	3 hours	Light foot traffic:	24 hours
Recoat:	24 hours	Heavy traffic:	24 hours

*Coverage will vary depending on the porosity and texture of the substrate.

**Lightweight split-faced block may require a film-forming product due to its extreme porosity.



 **PRO**
SERIES

DECORATIVE STAINS COMPARISON GUIDE

SURFACE	INFUSION® SEMI-TRANSPARENT WATER-BASED STAIN 	INFUSION® DYE STAIN 	INFUSION® REACTIVE STAIN 
	WATER BASED	SOLVENT-BASED MIX	ACID BASED
CONCRETE DRIVEWAYS	Excellent	Not Recommended*	Excellent
ASPHALT DRIVEWAYS	Not Recommended	Not Recommended	Not Recommended
PATIOS & WALKWAYS	Excellent	Not Recommended*	Excellent
GARAGE FLOORS†	Good	Very Good	Excellent
INTERIOR COMMERCIAL FLOORS	Excellent	Excellent**	Excellent
CONCRETE OR STUCCO WALLS	Excellent	Not Recommended	Excellent
BASEMENTS	Excellent	Excellent	Excellent
LAUNDRY ROOMS	Excellent	Excellent	Excellent
SWIMMING POOL DECKS	Excellent	Not Recommended	Excellent
ATHLETIC COURTS	Very Good	Not Recommended	Good

*Acetone dye stain is only for interior use. It WILL fade on exterior surfaces or in direct sunlight-exposed applications.

**Acetone dye stain achieves the best results with a grinding and polishing system when the surface is hardened and densified.

†High performance topcoats that resist hot tire pickup should be used in this application.

CLEAR'S COMPARISON GUIDE

GENERAL SEALERS

PAVER SEALERS



WATER BASED

SOLVENT BASED

WATER BASED

PRODUCT	ClariShield® Water-Based Wet-Look Concrete Sealer	ColorTop™ WB Solid Color Clear Sealer	ClariShield® Oil-Based Concrete Sealer	ColorTop™ Solvent-Based Solid Color Concrete Sealer	ClariShield® Solvent-Based Gloss Concrete Sealer 250 VOC	UltraPaver® Water-Based Paver Sealer - Natural	UltraPaver® Water-Based Paver Sealer - Gloss	
KEY FEATURES	Solvent-free, high solids, low VOC	Low-luster finish	Non-yellowing, UV resistant	Silicone acrylic formula. Inhibits hot tire pickup.	VOC >250 g/L. Non-yellowing, UV & chemical resistant	Bonds joint sand, prevents weed growth. Solvent-free, natural finish.	Bonds joint sand, prevents weed growth. Solvent-free, glossy finish.	
IDEAL FOR	Patios & walkways, pool decks, athletic courts, driveways	Pool decks, patios, athletic courts, stadiums, bridges, CMU block	Driveways, patios, walkways & pool decks	Patios & walkways, pool decks, driveways, garage floors & bare concrete	Patios & walkways, pool decks, driveways, garage floors & bare concrete	Bare concrete, masonry and brick paver stones on patios & walkways	Bare concrete, masonry and brick paver stones on patios & walkways	
INT/EXT	Interior/Exterior	Interior/Exterior	Exterior	Interior*/Exterior	Interior*/Exterior	Exterior	Exterior	
APPLICATION	Brush/roll - 1/4"-3/8" synthetic roller	Brush/roll - 1/4"-3/8" synthetic roller	Brush/roll/spray 3/8" synthetic roller or pump spray	Brush/roll - 1/4"-3/8" synthetic roller or pump spray	Brush/roll - 1/4"-3/8" synthetic roller or pump spray	Brush/roll - 1/4"-3/8" synthetic roller or pump spray	Brush/roll - 1/4"-3/8" synthetic roller or pump spray	
RECOAT TIME	2 hours	2 hours	4 hours	12 hours	12 hours	2 hours	2 hours	
CLEANUP	Soap & Water	Soap & Water	D-100 Solvent/Xylene	D-100 Solvent/Xylene	D-100 Solvent/Xylene	Soap & Water	Soap & Water	
PLANOGRAM/ NON-PLANO	P	N	P	N	N	P	P	

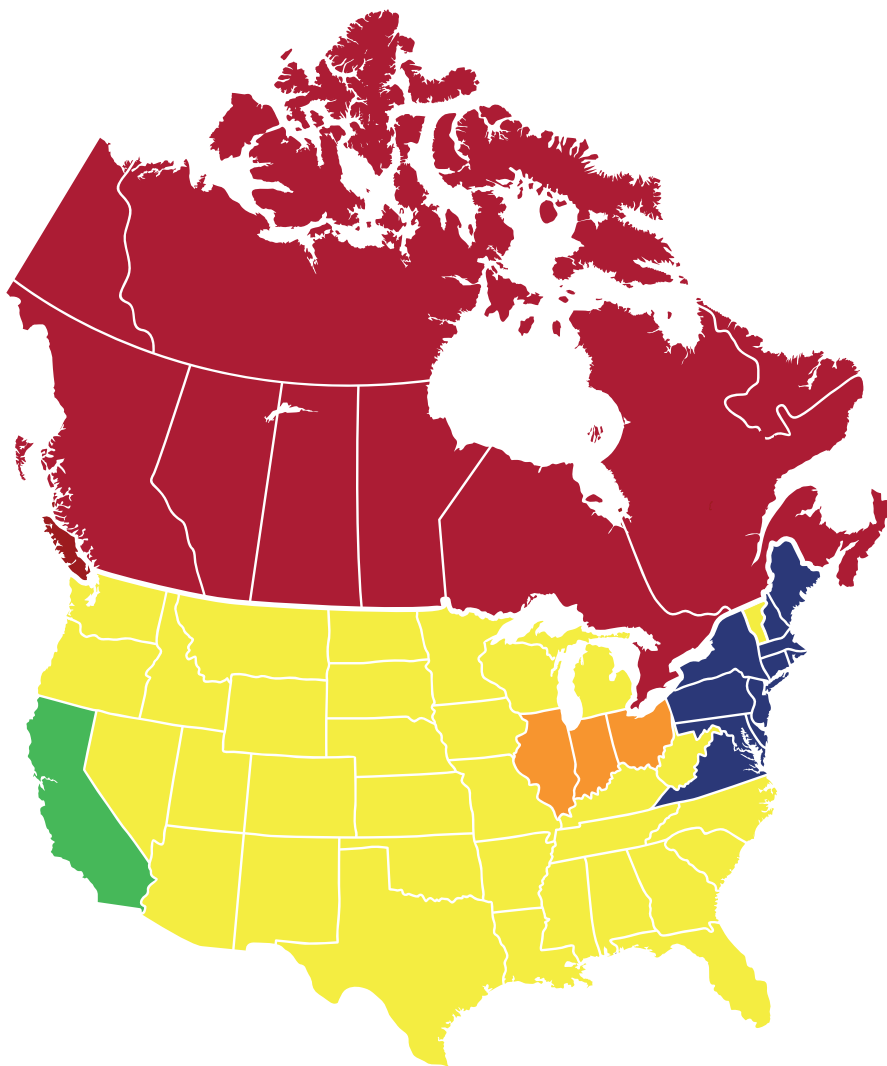
*If using for interior, please ensure proper ventilation and extinguish all open flames.



PAVER SEALERS		COMMERCIAL SEALERS			DECORATIVE TOPCOATS		
Solvent Based		Water Based		Solvent Based	Water Based		Solvent Based
UltraPaver® Solvent-Based Paver Sealer - Gloss	UltraPaver® Solvent-Based Paver Sealer	ClearProtect® Water-Based 2-Part Polyurethane Epoxy Clear Coat	ClearProtect® Water-Based 2-Part Self Leveling Epoxy Clear Coat	ClearProtect® High Performance Industrial Clear Coat	Infusion® Water-based Clear	Infusion® Industrial Floor Finish	Infusion® Solvent-based Clear
Weathering & water damage protection. Enhances color of pavers.	Penetrating, waterproofing sealer. Chemical resistant.	Water-Based. 60% solids breathable aliphatic urethane. Meets USDA food safety requirements.	100% solids, hi-gloss abrasion/chemical resistant. Meets USDA food safety requirements.	High-solids, single-component, aliphatic, moisture-cure urethane.	Acrylic emulsion formula. High-gloss finish, solvent free, low odor.	Provides added protection and long-lasting beauty. Enhances color brilliance of stained concrete.	Modified thermoplastic acrylic resins, high gloss finish, enriches the color of stained concrete.
Bare concrete, masonry and brick paver stones on patios, walkways & driveways	Bare concrete, pavers, stepping stones and Chattahoochee surfaces	Commercial, industrial & residential concrete floors. Topcoat over epoxy, overlay or any decorative stains.	Commercial, industrial & residential concrete floors. Metallic Epoxy Floors & commercial kitchens.	Bare concrete or over any H&C® decorative stains (S/T, Acid or Acetone Dye). Topcoat over epoxy.	Topcoat over any Infusion decorative stain	Topcoat over any Infusion decorative stain	Topcoat over any Infusion decorative stain
Exterior	Exterior	Interior/Exterior	Interior	Interior	Interior*	Interior*	Interior*
Brush/roll - 1/4"-3/8" synthetic roller or pump spray	Brush/roll - 1/4"-3/8" synthetic roller or pump spray	Synthetic brush, 1/4"-3/8" solvent-resistant roller, spike shoes	Synthetic brush, 1/4"-3/8" solvent-resistant roller, magic trowel, spike shoes	Brush/roll - 1/4"-3/8" synthetic roller	Brush/roll - 1/4"-3/8" synthetic roller	Rayon mop or 1/4" lambskin cover	Brush/roll - 1/4"-3/8" synthetic roller
4 hours	4 hours	2-4 hours	8-24 hours	9 hours min; 14 days max	4 hours	1-2 hours	4 hours
D-100 Solvent/ Xylene	D-100 Solvent/ Xylene	Soap & Water	Toluene, D-100 Solvent or Xylene	R2K5 or R7K65	Soap & Water	Soap & Water	D-100 Solvent or Xylene
N	N	N	N	N	N	N	N

H&C[®] PRODUCTS VOC COMPLIANCE

The chart to the right shows, by product line, the VOC compliance (as of January 1, 2020). For additional assistance, please contact H&C[®] Technical Support via the phone at 1-800-TO-STAIN (867-8246) or by web at www.HC-Concrete.com.



VOC-REGULATED LOCATIONS

-  SCAQMD - South Coast Air Quality Management District; www.aqmd.gov
-  CARB - California Air Resources Board www.arb.ca.gov
-  OTC - Ozone Transport Commission www.otcair.org
-  LADCO - Lake Michigan Air Directors Consortium; www.ladco.org
-  EPA - Environmental Protection Agency; www.epa.gov
-  Canada; www.ec.gc.ca

PRODUCTS	SCAQMD	CARB	OTC	LADCO	CANADA
ACRYLA-DECK® WATER-BASED SOLID COLOR DECK COATING	N	Y	Y	Y	Y
CLARISHIELD® OIL-BASED CLEAR SEALER	N	N	N	Y	N
CLARISHIELD SOLVENT-BASED 250 CLEAR SEALER	N	Y	Y	Y	Y
CLARISHIELD WATER-BASED CLEAR SEALER WET LOOK	Y	Y	Y	Y	Y
CLEARPROTECT® 2-PART POLYURETHANE CLEAR COAT	Y	Y	Y	Y	Y
CLEARPROTECT HIGH PERFORMANCE INDUSTRIAL CLEAR COAT	N	N	Y	Y	Y
CLEARPROTECT SOLVENT-BASED CURE AND SEAL	N	N	Y	Y	Y
CLEARPROTECT WATER-BASED 2-PART SELF LEVELING EPOXY	Y	Y	Y	Y	Y
COLORTOP™ SOLVENT-BASED 250 SEALER	N	Y	Y	Y	Y
COLORTOP SOLVENT-BASED SEALER	N	N	N	Y	N
COLORTOP WATER-BASED 50 STAIN	Y	Y	Y	Y	Y
COLORTOP WATER-BASED STAIN	Y	Y	Y	Y	Y
CONCRETEREADY® PREP PRODUCTS	Y	Y	Y	Y	Y
COOL FEEL® WATER-BASED HI BUILD DECK COATING WITH COMFORT STEP TECHNOLOGY	N	Y	Y	Y	Y
DURA-TOP® BROOM FINISH REPAIR	Y	Y	Y	Y	Y
DURA-TOP CONCRETE RESURFACER FINE TEXTURE	Y	Y	Y	Y	Y
DURA-TOP COLOR PACK	Y	Y	Y	Y	Y
DURA-TOP DUAL COMPONENT TEXTURE	Y	Y	Y	Y	Y
DURA-TOP FLORIDECK TEXTURE	Y	Y	Y	Y	Y
DURA-TOP LIQUID RELEASE	Y	Y	Y	Y	Y
DURA-TOP MICRO-TOPPING	Y	Y	Y	Y	Y
DURA-TOP RESURFACER HEAVY TEXTURE	Y	Y	Y	Y	Y
DURA-TOP RESURFACER INSTANT TEXTURE	Y	Y	Y	Y	Y
DURA-TOP STAMPABLE OVERLAY	Y	Y	Y	Y	Y
DURA-TOP TEXTURE RESIN	Y	Y	Y	Y	Y
ENDURAPOLISH™ CLEAR LIQUID HARDENER & DENSIFIER	Y	Y	Y	Y	Y
ENDURAPOLISH HI-GLOSS LITHIUM FINISH	Y	Y	Y	Y	Y
HYDRO-DEFEND® CONCRETE & DRIVEWAY PROTECTOR	Y	Y	Y	Y	Y
HYDRO-DEFEND CONCRETE WATERPROOFING SEALER	Y	Y	Y	Y	Y
HYDRO-DEFEND HB-100 WATER REPELLENT	N	N	N	Y	N
HYDRO-DEFEND HB-150 WATER REPELLENT	N	N	N	Y	N
HYDRO-DEFEND SILANE SL-40 WATER REPELLENT	N	N	N	Y	N
HYDRO-DEFEND SILOXANE SX-7 WATER REPELLENT	Y	Y	Y	Y	Y
INFUSION® DYE STAIN	Y	Y	Y	Y	Y
INFUSION INDUSTRIAL FLOOR FINISH	Y	Y	Y	Y	Y
INFUSION REACTIVE STAIN	Y	Y	Y	Y	Y
INFUSION SEMI-TRANSPARENT WATER-BASED STAIN	Y	Y	Y	Y	Y
INFUSION SOLVENT-BASED CLEAR DECORATIVE CONCRETE SEALER	N	N	N	Y	N
INFUSION SOLVENT-BASED SEALER	Y	Y	Y	Y	Y
INFUSION WATER-BASED SEALER	Y	Y	Y	Y	Y
SHARKGRIP® SLIP-RESISTANT ADDITIVE	Y	Y	Y	Y	Y
SHIELD-CRETE® XL HIGH PERFORMANCE GARAGE EPOXY	N	Y	Y	Y	Y
SHIELD-CRETE DECO-FLAKES	Y	Y	Y	Y	Y
SHIELD-CRETE WATER-BASED EPOXY GARAGE FLOOR COATING	N	Y	Y	Y	Y
SHIELD-CRETE WATER-BASED EPOXY GARAGE FLOOR CLEAR COAT	N	Y	Y	Y	Y
ULTRAPAVER® SOLVENT-BASED SEALER GLOSS	N	N	N	Y	N
ULTRAPAVER WATER-BASED CLEAR SEALER	N	Y	Y	Y	Y



PRODUCT LIST

Description	SKU#	UPC#	SMIS	Pack	Size	Made to Order	Page
Prep Products & Additives							
ConcreteReady® Etching Solution	50.160004-16	035777230046	650712300	2	1 Gallon		6
ConcreteReady Solvent-Based Cleaner Degreaser	50.170015-15	035777230053	650712318	4	1/2 Gallon		6
ConcreteReady Quick Patch & Repair	60.100709-99	035777230060	650712326	4	5 lb./1 Gallon Bucket		7
SharkGrip® Slip-Resistant Additive	50.155004-99	035777230015	650712276	12	3.2 oz.		7
SharkGrip Slip-Resistant Additive	50.155005-99	035777230022	650712284	6	16 oz.		7
SharkGrip Slip-Resistant Additive	50.155008-99	035777230039	650712292	1	19 lb.		7
Epoxy Floor Coatings							
Shield-Crete® Epoxy Garage Coating Kit Extra White Base	20.113000-99	035777913239	651114746	1	1 Kit		8
Shield-Crete Epoxy Garage Coating Kit Deep Base	20.114000-99	035777913246	651114753	1	1 Kit		8
Shield-Crete Epoxy Garage Coating Kit Ultra Deep Base	20.115000-99	035777913253	651114761	1	1 Kit		8
Shield-Crete Epoxy Garage Coating Kit – Concrete Gray	20.116000-99	035777913260	651114779	1	1 Kit		8
Shield-Crete Epoxy Garage Clear Coat Kit	20.117000-99	035777913277	651114795	1	1 Kit		9
Blue Chip Creek Deco-Flakes	20.105100-99	035777914649	651118176	4	1 lb. Pouch		9
Salt & Pepper Deco-Flakes	20.105200-99	035777914656	651118184	4	1 lb. Pouch		9
Salt & Pepper Deco-Flakes	20.105500-99	035777914687	651118218	1	25 lbs. Box		9
Earthy Mosaic Deco-Flakes	20.105300-99	035777914663	651118192	4	1 lb. Pouch		9
Pebble Beach Deco-Flakes	20.105400-99	035777914670	651118200	4	1 lb. Pouch		9
Pebble Beach Deco-Flakes	20.105600-99	035777914694	651118226	1	25 lbs. Box		9
Shield-Crete XL High Performance Garage Epoxy Part B Hardener	20.105301-15	035777856772	650998891	1	.5 Gallon		10
Shield-Crete XL High Performance Garage Epoxy Part A Epoxy Gray Taupe	20.105302-16	035777856802	650998909	4	1 Gallon		10
Shield-Crete XL High Performance Garage Epoxy Part A Epoxy Sand Taupe	20.105303-16	035777856826	650998925	4	1 Gallon		10
Shield-Crete XL High Performance Garage Epoxy Part B Fast Set Hardener	20.105304-36	035777856833	650998933	1	2 Gallon		10
Shield-Crete XL High Performance Garage Epoxy Part B Hardener	20.105305-36	035777856840	650998941	1	2 Gallon		10
Shield-Crete XL High Performance Garage Epoxy Part A Epoxy Haze Gray Taupe	20.105306-19	035777856857	650998966	1	5 Gallon		10
Shield-Crete XL High Performance Garage Epoxy Part A Epoxy Sand Taupe	20.105307-19	035777856864	650998974	1	5 Gallon		10
Solid Color Stains Water-Based							
ColorTop™ Water-Based Stain - Tint Base — Extra White	20.101214-16	035777228876	650711450	4	1 Gallon		11
ColorTop Water-Based Stain - Tint Base — Extra White	20.101215-20	035777228883	650711468	1	5 Gallon		11
ColorTop Water-Based Stain - Tint Base — Deep	20.102214-16	035777229057	650711633	4	1 Gallon		11
ColorTop Water-Based Stain - Tint Base — Deep	20.102215-20	035777229064	650711641	1	5 Gallon		11
ColorTop Water-Based Stain - Tint Base — Ultra Deep	20.103214-16	035777229118	650711690	4	1 Gallon		11
ColorTop Water-Based Stain - Tint Base — Ultra Deep	20.103215-20	035777229125	650711708	1	5 Gallon		11
ColorTop Water-Based Stain — Clear	20.101204-16	35777328187	650923014	4	1 Gallon		11
ColorTop Water-Based Stain — Clear	20.101205-20	35777328194	650923022	1	5 Gallon		11
ColorTop Water-Based Stain — Black	20.101224-16	035777228890	650711476	4	1 Gallon		11
ColorTop Water-Based Stain — Black	20.101225-20	035777228906	650711484	1	5 Gallon	Y	11
ColorTop Water-Based Stain — Bombay	20.101254-16	035777228913	650711492	4	1 Gallon		11
ColorTop Water-Based Stain — Bombay	20.101255-20	035777228920	650711500	1	5 Gallon		11
ColorTop Water-Based Stain — Gull Gray	20.101284-16	035777228937	650711518	4	1 Gallon		11
ColorTop Water-Based Stain — Gull Gray	20.101285-20	035777228944	650711526	1	5 Gallon	Y	11
ColorTop Water-Based Stain — Pearl Gray	20.101314-16	035777228951	650711534	4	1 Gallon	Y	11
ColorTop Water-Based Stain — Pearl Gray	20.101315-20	035777228968	650711542	1	5 Gallon		11
ColorTop Water-Based Stain — Sandstone	20.101324-16	035777228975	650711559	4	1 Gallon		11
ColorTop Water-Based Stain — Silver Gray	20.101344-16	035777228982	650711567	4	1 Gallon	Y	11
ColorTop Water-Based Stain — Terracotta	20.101354-16	035777228999	650711575	4	1 Gallon		11

PRODUCT LIST

Description	SKU#	UPC#	SMIS	Pack	Size	Made to Order	Page
ColorTop™ Water-Based Stain — Terracotta	20.101355-20	035777229002	650711583	1	5 Gallon		11
ColorTop Water-Based Stain — Tile Red	20.101364-16	035777229019	650711591	4	1 Gallon		11
ColorTop Water-Based Stain — Tile Red	20.101365-20	035777229026	650711609	1	5 Gallon		11
ColorTop Water-Based 50 Stain - Tint Base — Extra White	20.104414-16	035777229163	650711740	4	1 Gallon		12
ColorTop Water-Based 50 Stain - Tint Base — Extra White	20.104415-20	035777229194	650711757	1	5 Gallon		12
ColorTop Water-Based 50 Stain - Tint Base — Deep	20.104514-16	035777229187	650711765	4	1 Gallon		12
ColorTop Water-Based 50 Stain - Tint Base — Deep	20.104515-20	035777229217	650711773	1	5 Gallon		12
ColorTop Water-Based 50 Stain - Tint Base — Ultra Deep	20.104614-16	035777229200	650711781	4	1 Gallon		12
ColorTop Water-Based 50 Stain - Tint Base — Ultra Deep	20.104615-20	035777229231	650711799	1	5 Gallon		12
Solid Color Stains & Sealers Solvent-Based							
ColorTop Solvent-Based Sealer - Tint Base — Extra White	10.114014-16	035777228784	650711419	4	1 Gallon		13
ColorTop Solvent-Based Sealer - Tint Base — Extra White	10.114015-20	035777228821	650711427	1	5 Gallon		13
ColorTop Solvent-Based Sealer - Tint Base — Deep	10.116014-16	035777228838	650711435	4	1 Gallon		13
ColorTop Solvent-Based Sealer - Tint Base — Deep	10.116015-20	035777228845	650711443	1	5 Gallon		13
ColorTop Solvent-Based Sealer — Clear	10.100004-16	035777328101	650922974	4	1 Gallon		13
ColorTop Solvent-Based Sealer — Clear	10.100005-20	035777328118	650922982	1	5 Gallon		13
ColorTop Solvent-Based Sealer — Black	10.100024-16	035777230077	650711179	4	1 Gallon		13
ColorTop Solvent-Based Sealer — Black	10.100025-20	035777230084	650711187	1	5 Gallon		13
ColorTop Solvent-Based Sealer — Autumn Brown	10.100034-16	035777228548	650711195	4	1 Gallon		13
ColorTop Solvent-Based Sealer — Autumn Brown	10.100035-20	035777228555	650711203	1	5 Gallon		13
ColorTop Solvent-Based Sealer — Bombay	10.100054-16	035777228562	650711211	4	1 Gallon		13
ColorTop Solvent-Based Sealer — Bombay	10.100055-20	035777228579	650711229	1	5 Gallon		13
ColorTop Solvent-Based Sealer — Brick Red	10.100064-16	035777228586	650711237	4	1 Gallon		13
ColorTop Solvent-Based Sealer — Brick Red	10.100065-20	035777228593	650711245	1	5 Gallon		13
ColorTop Solvent-Based Sealer — Charcoal	10.100074-16	035777228616	650711252	4	1 Gallon		13
ColorTop Solvent-Based Sealer — Charcoal	10.100075-20	035777228623	650711260	1	5 Gallon		13
ColorTop Solvent-Based Sealer — Gull Gray	10.100084-16	035777228630	650711278	4	1 Gallon		13
ColorTop Solvent-Based Sealer — Gull Gray	10.100085-20	035777228647	650711286	1	5 Gallon		13
ColorTop Solvent-Based Sealer — Patio Green	10.100104-16	035777228654	650711294	4	1 Gallon		13
ColorTop Solvent-Based Sealer — Patio Green	10.100105-20	035777228661	650711302	1	5 Gallon		13
ColorTop Solvent-Based Sealer — Pearl Gray	10.100114-16	035777228678	650711310	4	1 Gallon		13
ColorTop Solvent-Based Sealer — Pearl Gray	10.100115-20	035777228685	650711328	1	5 Gallon		13
ColorTop Solvent-Based Sealer — Sandstone	10.100124-16	035777228692	650711336	4	1 Gallon		13
ColorTop Solvent-Based Sealer — Sandstone	10.100125-20	035777228708	650711344	1	5 Gallon		13
ColorTop Solvent-Based Sealer — Silver Gray	10.100144-16	035777228715	650711351	4	1 Gallon		13
ColorTop Solvent-Based Sealer — Silver Gray	10.100145-20	035777228722	650711369	1	5 Gallon		13
ColorTop Solvent-Based Sealer — Terracotta	10.100154-16	035777228739	650711377	4	1 Gallon		13
ColorTop Solvent-Based Sealer — Terracotta	10.100155-20	035777228753	650711385	1	5 Gallon		13
ColorTop Solvent-Based Sealer — Tile Red	10.100164-16	035777228760	650711393	4	1 Gallon		13
ColorTop Solvent-Based Sealer — Tile Red	10.100165-20	035777228777	650711401	1	5 Gallon		13
ColorTop Solvent-Based 250 Sealer - Tint Base — Extra White	30.114014-16	035777229439	650711997	4	1 Gallon		14
ColorTop Solvent-Based 250 Sealer - Tint Base — Extra White	30.114015-20	035777229446	650712003	1	5 Gallon		14
ColorTop Solvent-Based 250 Sealer - Tint Base — Deep	30.116014-16	035777229477	650712011	4	1 Gallon		14
ColorTop Solvent-Based 250 Sealer - Tint Base — Deep	30.116015-20	035777229484	650712029	1	5 Gallon		14
ColorTop Solvent-Based 250 Sealer — Clear	30.100004-16	035777328132	650922990	4	1 Gallon		14
ColorTop Solvent-Based 250 Sealer — Clear	30.100005-20	035777328149	650923006	1	5 Gallon		14



PRODUCT LIST

Description	SKU#	UPC#	SMIS	Pack	Size	Made to Order	Page
ColorTop™ Solvent-Based 250 Sealer — Bombay	30.101104-16	035777229255	650711815	4	1 Gallon	Y	14
ColorTop Solvent-Based 250 Sealer — Bombay	30.101105-20	035777229262	650711823	1	5 Gallon	Y	14
ColorTop Solvent-Based 250 Sealer — Sandstone	30.101204-16	035777229279	650711831	4	1 Gallon	Y	14
ColorTop Solvent-Based 250 Sealer — Sandstone	30.101205-20	035777229286	650711849	1	5 Gallon	Y	14
ColorTop Solvent-Based 250 Sealer — Black	30.101404-16	035777229293	650711856	4	1 Gallon	Y	14
ColorTop Solvent-Based 250 Sealer — Black	30.101405-20	035777229309	650711864	1	5 Gallon	Y	14
ColorTop Solvent-Based 250 Sealer — Tile Red	30.101504-16	035777229316	650711872	4	1 Gallon	Y	14
ColorTop Solvent-Based 250 Sealer — Tile Red	30.101505-20	035777229323	650711880	1	5 Gallon	Y	14
ColorTop Solvent-Based 250 Sealer — Terracotta	30.101604-16	035777229330	650711898	4	1 Gallon	Y	14
ColorTop Solvent-Based 250 Sealer — Terracotta	30.101605-20	035777229347	650711906	1	5 Gallon	Y	14
ColorTop Solvent-Based 250 Sealer — Patio Green	30.101704-16	035777229354	650711914	4	1 Gallon	Y	14
ColorTop Solvent-Based 250 Sealer — Patio Green	30.101705-20	035777229361	650711922	1	5 Gallon	Y	14
ColorTop Solvent-Based 250 Sealer — Pearl Gray	30.101804-16	035777229378	650711930	4	1 Gallon	Y	14
ColorTop Solvent-Based 250 Sealer — Pearl Gray	30.101805-20	035777229385	650711948	1	5 Gallon	Y	14
ColorTop Solvent-Based 250 Sealer — Silver Gray	30.101904-16	035777229392	650711955	4	1 Gallon	Y	14
ColorTop Solvent-Based 250 Sealer — Silver Gray	30.101905-20	035777229408	650711963	1	5 Gallon	Y	14
Solid Color Water-Based Acrylic Coatings							
Acryla-Deck® Water-Based Solid Color Deck Coating - Tint Base — Extra White	25.100214-16	035777311936	650902323	4	1 Gallon		15
Acryla-Deck Water-Based Solid Color Deck Coating - Tint Base — Extra White	25.100215-20	035777311943	650902331	1	5 Gallon		15
Acryla-Deck Water-Based Solid Color Deck Coating - Tint Base — Deep	25.100314-16	035777311967	650902356	4	1 Gallon		15
Acryla-Deck Water-Based Solid Color Deck Coating - Tint Base — Deep	25.100315-20	035777318126	650910565	1	5 Gallon		15
Cool Feel® with Comfort Step Technology™ Tint Base — Extra White	25.101414-16	035777880210	651042921	4	1 Gallon		15
Cool Feel with Comfort Step Technology Tint Base — Extra White	25.101415-20	035777880258	651043036	1	5 Gallon		15
Cool Feel with Comfort Step Technology Tint Base — Deep	25.101514-16	035777880296	651043085	4	1 Gallon		15
Cool Feel with Comfort Step Technology Tint Base — Deep	25.101515-20	035777880289	651043077	1	5 Gallon		15
Heavy Shield® Concrete & Driveway Enamel / Stain							
Heavy Shield Concrete & Driveway Enamel / Stain	35.100214-16	035777848784	650990146	4	1 Gallon		16
Heavy Shield Concrete & Driveway Enamel / Stain	35.100215-20	035777848814	650990260	1	5 Gallon		16
Heavy Shield Concrete & Driveway Enamel / Stain	35.100314-16	035777849309	650990757	4	1 Gallon		16
Heavy Shield Concrete & Driveway Enamel / Stain	35.100315-20	035777849316	650990781	1	5 Gallon		16
Heavy Shield Concrete & Driveway Enamel / Stain	35.100414-16	035777849330	650990807	4	1 Gallon		16
Heavy Shield Concrete & Driveway Enamel / Stain	35.100415-20	035777849347	650990815	1	5 Gallon		16
Semi-Transparent Stains							
Infusion® Semi-Transparent Water-Based Stain — Arctic Stone	45.102014-16	035777229491	650712037	2	1 Gallon		18
Infusion Semi-Transparent Water-Based Stain — Tumbled Stone	45.102024-16	035777229507	650712045	2	1 Gallon		18
Infusion Semi-Transparent Water-Based Stain — Obsidian	45.102034-16	035777229514	650712052	2	1 Gallon		18
Infusion Semi-Transparent Water-Based Stain — Espresso	45.102044-16	035777229613	650712060	2	1 Gallon		18
Infusion Semi-Transparent Water-Based Stain — Cocoa Bean	45.102054-16	035777229668	650712078	2	1 Gallon		18
Infusion Semi-Transparent Water-Based Stain — Gold Leaf	45.102124-16	035777229880	650712144	2	1 Gallon		18
Infusion Semi-Transparent Water-Based Stain — Cordovan	45.102064-16	035777229699	650712086	2	1 Gallon		18
Infusion Semi-Transparent Water-Based Stain — Henna	45.102074-16	035777229705	650712094	2	1 Gallon		18
Infusion Semi-Transparent Water-Based Stain — Dahlia Red	45.102084-16	035777229729	650712102	2	1 Gallon		18
Infusion Semi-Transparent Water-Based Stain — Cardinal Red	45.102094-16	035777229828	650712110	2	1 Gallon		18
Infusion Semi-Transparent Water-Based Stain — Pumpkin Spice	45.102104-16	035777229842	650712128	2	1 Gallon		18
Infusion Semi-Transparent Water-Based Stain — Autumn Breeze	45.102114-16	035777229866	650712136	2	1 Gallon		18
Infusion Semi-Transparent Water-Based Stain — Cork	45.102134-16	035777229897	650712151	2	1 Gallon		18

PRODUCT LIST

Description	SKU#	UPC#	SMIS	Pack	Size	Made to Order	Page
Infusion® Semi-Transparent Water-Based Stain — Dewy Blade	45.102144-16	035777229903	650712169	2	1 Gallon		18
Infusion Semi-Transparent Water-Based Stain — Moss	45.102154-16	035777229910	650712177	2	1 Gallon		18
Infusion Semi-Transparent Water-Based Stain — Marina Blue	45.102164-16	035777229927	650712185	2	1 Gallon		18
Clear Sealers							
ClariShield Oil-Based Clear Sealer	50.120234-16	035777229934	650712193	4	1 Gallon		20
ClariShield Oil-Based Clear Sealer	50.120235-20	035777229941	650712201	1	5 Gallon		20
ClariShield Water-Based Concrete Sealer Wet Look	50.158154-16	035777229996	650712250	4	1 Gallon		21
ClariShield Water-Based Concrete Sealer Wet Look	50.158155-20	035777230008	650712268	1	5 Gallon		21
ClariShield Solvent-Based 250 Clear Sealer	30.102004-16	035777229415	650711971	4	1 Gallon		21
ClariShield Solvent-Based 250 Clear Sealer	30.102005-20	035777229422	650711989	1	5 Gallon		21
Paver Sealers							
UltraPaver® Water-Based Clear Sealer — Natural	50.146054-16	035777229958	650712219	2	1 Gallon		22
UltraPaver Water-Based Clear Sealer — Natural	50.146055-20	035777229965	650712227	1	5 Gallon		22
UltraPaver Water-Based Clear Sealer — Gloss	50.157054-16	035777229972	650712235	2	1 Gallon		22
UltraPaver Water-Based Clear Sealer — Gloss	50.157055-20	035777229989	650712243	1	5 Gallon		22
UltraPaver Solvent-Based Clear Sealer — Gloss	50.149054-16	035777328200	650923063	4	1 Gallon		22
UltraPaver Solvent-Based Clear Sealer — Gloss	50.149055-20	035777328255	650923071	1	5 Gallon		22
UltraPaver Solvent-Based Clear Sealer — Gloss — Florida	50.150054-20	035777328286	650923089	1	5 Gallon		22
Water Repellants							
Hydro-Defend® Concrete Waterproofing Sealer	50.143054-16	035777242438	650712234	2	1 Gallon		23
Hydro-Defend Concrete Waterproofing Sealer	50.143055-20	035777242421	650712342	1	5 Gallon		23
Hydro-Defend Concrete & Driveway Protector	50.144154-16	035777242445	650712359	4	1 Gallon		23
Hydro-Defend Concrete & Driveway Protector	50.144155-20	035777242452	650712367	1	5 Gallon		23
Polishing Products							
EnduraPolish™ Clear Liquid Hardener & Densifier	55.130034-16	035777330463	650924236	4	1 Gallon		25
EnduraPolish Clear Liquid Hardener & Densifier	55.130035-20	035777330494	650924244	1	5 Gallon		25
EnduraPolish HI-GLOSS Lithium Finish	55.130044-16	035777330524	650924251	4	1 Gallon		25
EnduraPolish HI-GLOSS Lithium Finish	55.130045-20	035777330531	650924269	1	5 Gallon		25
Decorative Stains and Dyes							
Infusion® Dye Stain — Spanish Dagger	41.105001-99	0235777329115	650923717	4	2.6l oz.		26
Infusion Dye Stain — Reno Gold	41.105002-99	035777329139	650923733	4	2.6l oz.		26
Infusion Dye Stain — Saddle Brown	41.105003-99	035777329146	650923741	4	2.6l oz.		26
Infusion Dye Stain — Prickly Cactus	41.105004-99	035777329160	650923758	4	2.6l oz.		26
Infusion Dye Stain — Salsa Red	41.105005-99	035777329467	650923899	4	2.6l oz.		26
Infusion Dye Stain — Oasis	41.105006-99	035777329191	650923774	4	2.6l oz.		26
Infusion Dye Stain — Canyon	41.105007-99	035777329214	650923782	4	2.6l oz.		26
Infusion Dye Stain — Tortoise Shell	41.105008-99	035777329238	650923808	4	2.6l oz.		26
Infusion Dye Stain — Ranch Hand Brown	41.105009-99	035777329344	650923816	4	2.6l oz.		26
Infusion Dye Stain — Cowboy Hat	41.105010-99	035777329474	650923907	4	2.6l oz.		26
Infusion Dye Stain — Vegas Light	41.105011-99	035777329382	650923832	4	2.6l oz.		26
Infusion Dye Stain — Red Rock	41.105012-99	035777329399	650923840	4	2.6l oz.		26
Infusion Dye Stain — Adobe Red	41.105013-99	035777329405	650923857	4	2.6l oz.		26
Infusion Dye Stain — Stagecoach Brown	41.105014-99	035777329436	650923865	4	2.6l oz.		26
Infusion Dye Stain — Desert Orange	41.105015-99	035777329443	650923873	4	2.6l oz.		26
Infusion Dye Stain — Rattler's Brown	41.105016-99	035777329450	650923881	4	2.6l oz.		26
Infusion Reactive Stain — Wenge Wood	40.102004-16	035777329498	650923915	4	1 Gallon		28



PRODUCT LIST

Description	SKU#	UPC#	SMIS	Pack	Size	Made to Order	Page
Infusion® Reactive Stain — Wenge Wood	40.102005-20	035777329504	650923923	1	5 Gallon	Y	28
Infusion Reactive Stain — Rusted Fence	40.102014-16	035777329511	650923931	4	1 Gallon		28
Infusion Reactive Stain — Rusted Fence	40.102015-20	035777329528	650923949	1	5 Gallon	Y	28
Infusion Reactive Stain — Black Coffee	40.102024-16	035777329542	650923956	4	1 Gallon		28
Infusion Reactive Stain — Black Coffee	40.102025-20	035777329573	650923964	1	5 Gallon	Y	28
Infusion Reactive Stain — Crumbled Brick	40.102034-16	035777329580	650923972	4	1 Gallon		28
Infusion Reactive Stain — Crumbled Brick	40.102035-20	035777329597	650923980	1	5 Gallon	Y	28
Infusion Reactive Stain — Potterswheel	40.102044-16	035777329603	650923998	4	1 Gallon		28
Infusion Reactive Stain — Potterswheel	40.102045-20	035777329610	650924004	1	5 Gallon	Y	28
Infusion Reactive Stain — Lido Blue	40.102054-16	035777329627	650924012	4	1 Gallon		28
Infusion Reactive Stain — Lido Blue	40.102055-20	035777329719	650924020	1	5 Gallon	Y	28
Infusion Reactive Stain — Potato Ivy	40.102064-16	035777329764	650924038	4	1 Gallon		28
Infusion Reactive Stain — Potato Ivy	40.102065-20	035777329863	650924046	1	5 Gallon	Y	28
Infusion Reactive Stain — Verdant Plain	40.102074-16	035777329870	650924053	4	1 Gallon		28
Infusion Reactive Stain — Verdant Plain	40.102075-20	035777329894	650924061	1	5 Gallon	Y	28
Infusion Reactive Stain — Sienna Red	40.102084-16	035777329900	650924079	4	1 Gallon		28
Infusion Reactive Stain — Sienna Red	40.102085-20	035777329917	650924087	1	5 Gallon	Y	28
Infusion Reactive Stain — Mustard Seed	40.102094-16	035777329924	650924095	4	1 Gallon		28
Infusion Reactive Stain — Mustard Seed	40.102095-20	035777329948	650924103	1	5 Gallon	Y	28
Infusion Reactive Stain — Midas Gold	40.102104-16	035777329955	650924111	4	1 Gallon		28
Infusion Reactive Stain — Midas Gold	40.102105-20	035777329979	650924129	1	5 Gallon	Y	28
Infusion Reactive Stain — Shore Gray	40.102114-16	035777329986	650924137	4	1 Gallon		28
Infusion Reactive Stain — Shore Gray	40.102115-20	035777330319	650924178	1	5 Gallon	Y	28
Commercial Clear Sealers							
Infusion Solvent-Based Clear Decorative Concrete Sealer	50.100004-16	035777327944	650922891	4	1 Gallon		30
Infusion Solvent-Based Clear Decorative Concrete Sealer	50.100005-20	035777327982	650922917	1	5 Gallon		30
Infusion Solvent-Based Sealer	40.101014-16	035777330357	650924194	4	1 Gallon		30
Infusion Solvent-Based Sealer	40.101015-20	035777330432	650924210	1	5 Gallon		30
Infusion Water-Based Sealer	40.101004-16	035777317594	650909625	4	1 Gallon		30
Infusion Industrial Floor Finish	40.101024-16	035777330333	650924186	2	1 Gallon		30
Infusion Industrial Floor Finish	40.101025-20	035777330388	650924202	1	5 Gallon		30
ClearProtect® Solvent-Based Cure And Seal	50.155014-16	035777317648	650909674	4	1 Gallon		31
ClearProtect Solvent-Based Cure And Seal	50.155015-20	035777317655	650909682	1	5 Gallon		31
ClearProtect High Performance Industrial Clear Coat	50.170154-16	035777317624	650909658	4	1 Gallon		31
ClearProtect High Performance Industrial Clear Coat	50.170155-20	035777317631	650909666	1	5 Gallon		31
ClearProtect 2-Part Polyurethane Gloss A	50.11735A-20	035777328323	650923097	1	5 Gallon		32
ClearProtect 2-Part Polyurethane Gloss B	50.11735B-20	035777328330	650923105	1	5 Gallon		32
ClearProtect 2-Part Polyurethane Gloss B	50.11735B-16	035777328347	650923113	4	1 Gallon		32
ClearProtect 2-Part Polyurethane Satin A	50.11725A-20	035777328460	650923121	1	5 Gallon		32
ClearProtect 2-Part Polyurethane Satin B	50.11725B-20	035777328590	650923139	1	5 Gallon		32
ClearProtect 2-Part Polyurethane Satin B	50.11725B-16	035777328637	650923147	4	1 Gallon		32
ClearProtect 2-Part Polyurethane Gloss A	50.11755A-19	035777467626	650964679	1	4 Gallon		32
ClearProtect 2-Part Polyurethane Gloss B	50.11755B-36	035777467633	650964687	1	2 Gallon		32
ClearProtect 2-Part Polyurethane Satin A	50.11745A-19	035777467640	650964695	1	4 Gallon		32
ClearProtect 2-Part Polyurethane Satin B	50.11745B-36	035777467657	650964703	1	2 Gallon		32
ClearProtect 2-Part Polyurethane Gloss A	50.11755A-16	035777467671	650964711	4	1 Gallon		32

PRODUCT LIST

Description	SKU#	UPC#	SMIS	Pack	Size	Made to Order	Page
ClearProtect® 2-Part Polyurethane Gloss B	50.11755B-14	035777467701	650964737	6	1 Quart		32
ClearProtect2-Part Polyurethane Satin A	50.11745A-16	035777467817	650964752	4	1 Gallon		32
ClearProtect 2-Part Polyurethane Satin B	50.11745B-14	035777467824	650964760	6	1 Quart		32
ClearProtect 2-Part Self-Leveling Epoxy Clear Coat Part A	50.18045A-20	035777894804	651070062	1	5 Gallon		33
ClearProtect 2-Part Self-Leveling Epoxy Clear Coat Part B	50.18045B-20	035777894811	651070070	1	5 Gallon		33
ClearProtect 2-Part Self-Leveling Epoxy Clear Coat Part A	50.18065A-16	035777894347	651068926	4	1 Gallon		33
ClearProtect 2-Part Self-Leveling Epoxy Clear Coat Part B	50.18065B-16	035777894378	651068959	4	1 Gallon		33
Metallic Flooring							
Pro Series Epoxy Basecoat Part A Epoxy	50.18075A-14	035777856970	650999048	4	1 Quart		34
Pro Series Epoxy Basecoat Gray Part B Hardener	50.18125B-16	035777857090	650999089	4	1 Gallon		34
Pro Series Epoxy Basecoat Black Part B Hardener	50.18105B-16	035777857052	650999063	4	1 Gallon		34
Pro Series Epoxy Basecoat Part A Epoxy	50.18085A-16	035777856994	650999055	1	1 Gallon		34
Pro Series Epoxy Basecoat Gray Part B Hardener	50.18135B-30	035777857106	650999097	1	3 Gallon		34
Pro Series Epoxy Basecoat Black Part B Hardener	50.18115B-30	035777857076	650999071	1	3 Gallon		34
ClearProtect® 2-Part Self-Leveling Epoxy Clear Coat Part A	50.18045A-20	035777894804	651070062	1	5 Gallon		34
ClearProtect 2-Part Self-Leveling Epoxy Clear Coat Part B	50.18045B-20	035777894811	651070070	1	5 Gallon		34
ClearProtect 2-Part Self-Leveling Epoxy Clear Coat Part A	50.18065A-16	035777894347	651068926	4	1 Gallon		33
ClearProtect 2-Part Self-Leveling Epoxy Clear Coat Part B	50.18065B-16	035777894378	651068959	4	1 Gallon		34
Metallic Pigment — Silver	20.104301-41	035777854242	650995624	12	16 OZ		35
Metallic Pigment — Crystal	20.104302-41	035777854303	650995657	12	16 OZ		35
Metallic Pigment — Diamond	20.104303-41	035777854310	650995665	12	16 OZ		35
Metallic Pigment — Gem	20.104304-41	035777854327	650995673	12	16 OZ		35
Metallic Pigment — Orange Beryl	20.104305-41	035777854334	650995681	12	16 OZ		35
Metallic Pigment — Slate Onyx	20.104306-41	035777854358	650995699	12	16 OZ		35
Metallic Pigment — Smoke Topaz	20.104307-41	035777854365	650995707	12	16 OZ		35
Metallic Pigment — Rose Gold	20.104308-41	035777854372	650995715	12	16 OZ		35
Metallic Pigment — Jasper	20.104309-41	035777854396	650995723	12	16 OZ		35
Metallic Pigment — Sapphire	20.104310-41	035777854419	650995731	12	16 OZ		35
Metallic Pigment — Ruby	20.104311-41	035777854426	650995749	12	16 OZ		35
Metallic Pigment — Black Diamond	20.104312-41	035777854433	650995756	12	16 OZ		35
Metallic Pigment — Champagne	20.104313-41	035777854440	650995764	12	16 OZ		35
Metallic Pigment — Smokey Onyx	20.104314-41	035777854457	650995772	12	16 OZ		35
Metallic Pigment — Fossil	20.104315-41	035777854464	650995780	12	16 OZ		35
Metallic Pigment — Smokey Quartz	20.104316-41	035777854471	650995798	12	16 OZ	Y	35
Metallic Pigment — Blue Topaz	20.104317-41	035777854488	650995806	12	16 OZ	Y	35
Metallic Pigment — Aquamarine	20.104318-41	035777854501	650995814	12	16 OZ	Y	35
Metallic Pigment — Orange Sapphire	20.104319-41	035777854525	650995822	12	16 OZ	Y	35
Metallic Pigment — Amethyst	20.104320-41	035777854549	650995830	12	16 OZ	Y	35
Metallic Pigment — Topaz	20.104321-41	035777854556	650995848	12	16 OZ	Y	35
Metallic Pigment — Peridot	20.104322-41	035777854563	650995855	12	16 OZ		35
Metallic Pigment — Garnet	20.104323-41	035777854570	650995863	12	16 OZ	Y	35
Metallic Pigment — Chocolate Diamond	20.104324-41	035777854587	650995871	12	16 OZ	Y	35
Metallic Pigment — Copper	20.104325-41	035777854594	650995889	12	16 OZ	Y	35
Metallic Pigment — Siam	20.104326-41	035777854600	650995897	12	16 OZ	Y	35
Metallic Pigment — Fire Opal	20.104327-41	035777854617	650995905	12	16 OZ	Y	35
Metallic Pigment — Gold	20.104328-41	035777854624	650995913	12	16 OZ	Y	35



PRODUCT LIST

Description	SKU#	UPC#	SMIS	Pack	Size	Made to Order	Page
Metallic Pigment — Tiger's Eye	20.104329-41	035777854631	650995921	12	16 OZ	Y	35
Metallic Pigment — Amber	20.104330-41	035777854648	650995939	12	16 OZ	Y	35
Concrete Resurfacers							
Dura-Top® Resurfacer Instant Texture	60.100209-50	035777324325	650920705	1	50 lb. Bag		36
Dura-Top Resurfacer Heavy Texture	60.100109-50	035777324332	650920713	1	50 lb. Bag		36
Dura-Top Dual Component Texture	60.100409-50	035777324356	650920747	1	5 Gallon		37
Dura-Top Texture Resin	60.100309-20	035777388136	650937030	1	50 lb. Bag		37
Dura-Top Stampable Overlay	60.100509-50	035777324998	650921422	1	50 lb. Bag		38
Dura-Top Liquid Release	60.100809-20	035777325001	650921430	1	50 lb. Bag		38
Dura-Top Broom Finish Repair	60.100609-50	035777325797	650922065	1	5 Gallon		39
Dura-Top Micro-Topping	60.100909-50	035777325322	650922040	1	50 lb. Bag		40
Dura-Top Florideck Texture	60.100119-50	035777325759	650922057	1	50 lb. Bag		40
Dura-Top Fine Texture	60.101109-50	035777526453	650975576	1	50 lb. Bag		41
Color Packs							
Dura-Top Color Pack — Birch Bark	60.100001-99	035777324370	650920762	12	1 lb. Bag		42
Dura-Top Color Pack — Bamboo	60.100002-99	035777324387	650920770	12	1 lb. Bag		42
Dura-Top Color Pack — Dried Sage	60.100003-99	035777324394	650920788	12	1 lb. Bag		42
Dura-Top Color Pack — Thistle	60.100004-99	035777324400	650920796	12	1 lb. Bag		42
Dura-Top Color Pack — Gullie Blue	60.100005-99	035777324417	650920804	12	1 lb. Bag		42
Dura-Top Color Pack — Hot Mauve	60.100006-99	035777324424	650920812	12	1 lb. Bag		42
Dura-Top Color Pack — Copper Penny	60.100007-99	035777324431	650920820	12	1 lb. Bag		42
Dura-Top Color Pack — Canyon Clay	60.100008-99	035777324448	650920838	12	1 lb. Bag		42
Dura-Top Color Pack — Paprika	60.100009-99	035777324455	650920846	12	1 lb. Bag		42
Dura-Top Color Pack — Brickwork Red	60.100010-99	035777324462	650920853	12	1 lb. Bag		42
Dura-Top Color Packs — Cotton Ball	60.100011-99	035777324493	650920887	12	1 lb. Bag		42
Dura-Top Color Pack — Tweed	60.100012-99	035777324509	650920895	12	1 lb. Bag		42
Dura-Top Color Pack — Sandstone	60.100013-99	035777324516	650920903	12	1 lb. Bag		42
Dura-Top Color Pack — Soapstone	60.100014-99	035777324523	650920911	12	1 lb. Bag		42
Dura-Top Color Pack — Fawn	60.100015-99	035777324530	650920929	12	1 lb. Bag		42
Dura-Top Color Pack — Blank Canvas	60.100016-99	035777324554	650920945	12	1 lb. Bag		42
Dura-Top Color Pack — Alabaster	60.100017-99	035777324561	650920952	12	1 lb. Bag		42
Dura-Top Color Pack — Cemented Deal	60.100018-99	035777324578	650920960	12	1 lb. Bag		42
Dura-Top Color Pack — Siberian Haze	60.100019-99	035777324585	650920978	12	1 lb. Bag		42
Dura-Top Color Pack — Natural Cork	60.100020-99	035777324592	650920986	12	1 lb. Bag		42
Dura-Top Color Pack — Buckhead Brown	60.100021-99	035777324608	650920994	12	1 lb. Bag		42
Dura-Top Color Pack — Maple	60.100022-99	035777324615	650921000	12	1 lb. Bag		42
Dura-Top Color Pack — Bold Bark	60.100023-99	035777324622	650921018	12	1 lb. Bag		42
Dura-Top Color Pack — Black Walnut	60.100024-99	035777324639	650921026	12	1 lb. Bag		42
Dura-Top Color Pack — Coffee Bean	60.100025-99	035777324646	650921034	12	1 lb. Bag		42
Dura-Top Color Pack — Brushed Steel	60.100026-99	035777324653	650921042	12	1 lb. Bag		42
Dura-Top Color Pack — Gadget Gray	60.100027-99	035777324660	650921059	12	1 lb. Bag		42
Dura-Top Color Pack — City Sidewalk	60.100028-99	035777324677	650921067	12	1 lb. Bag		42
Dura-Top Color Pack — Solitude	60.100029-99	035777324684	650921075	12	1 lb. Bag		42
Dura-Top Color Pack — Pepper Black	60.100030-99	035777324707	650921091	12	1 lb. Bag		42

PRODUCT LIST

Description	SKU#	UPC#	SMIS	Pack	Size	Made to Order	Page
Commercial Water Repellents							
Hydro-Defend® Silane SI-40 Water Repellent	50.145055-20	035777328088	650922958	1	5 Gallon		44
Hydro-Defend Siloxane SX-7 Water Repellent	50.144055-20	035777328095	650922966	1	5 Gallon		44
Hydro-Defend HB-100 Water Repellent	50.140105-20	035777328033	650922925	1	5 Gallon		45
Hydro-Defend HB-150 Water Repellent	50.140155-20	035777328071	650922933	1	5 Gallon		45



H&C® PRODUCT CATALOG

H&C Concrete Coatings

Prospect Ave., Cleveland, Ohio 44115

1-800-867-8246

01/20

© H&C Concrete Coatings
TAGHC 1663/19

720-0250-000

2005859PD