



— DECORATIVE CONCRETE —

PRODUCT CATALOG

—

PRODUCT CATALOG



H&C® has a comprehensive line for your decorative concrete product needs. With a wide product offering of stains, sealers, water repellents, resurfacers and more — we are making it easy for you to create your own look. Add years of life to new concrete, or revitalize old concrete for much less than the cost of replacement.

CONTENTS

04	STEPS TO PREP
06	PREP PRODUCTS & ADDITIVES
08	EPOXY FLOOR COATINGS
12	SOLID COLOR STAINS & SEALERS
20	SEMI-TRANSPARENT STAINS
22	CLEAR SEALERS
24	PAVER SEALERS
25	WATER REPELLENTS
26	PRO SERIES
27	POLISHING PRODUCTS
28	DECORATIVE STAINS AND DYES
32	COMMERCIAL CLEAR SEALERS
36	METALLIC FLOORING
38	CONCRETE RESURFACERS
44	COLOR PACKS
46	COLOR HARDENERS AND RELEASE
48	COMMERCIAL WATER REPELLENTS
51	DECORATIVE STAINS COMPARISON GUIDE
52	CLEAR COMPARISON GUIDE
54	VOC COMPLIANCE
56	PRODUCT LISTING

PROTECT AND BEAUTIFY ALL OF YOUR CONCRETE SURFACES WITH H&C[®] DECORATIVE CONCRETE PRODUCTS

WHO WE ARE

H&C, America's leading brand for concrete beauty and protection, provides outstanding concrete stains, sealers, floor coatings, and accessories that deliver vibrant color, superior adhesion and lasting, reliable durability.

Our commitment to high-performing products, superb service and support, and innovative solutions, put us in a class by ourselves. We always look for new and innovative ways to make concrete more appealing, more artistic and more colorful.

H&C has a comprehensive offering to meet your decorative concrete needs – with a wide product offering of stains, sealers, water repellents, resurfacers and more. Add years of life to new concrete, or revitalize old concrete for much less than the cost of replacement.

Ideal for residential and commercial projects, H&C has products for both interior and exterior, concrete and masonry surfaces.

You can always count on H&C for the newest technology in concrete coatings. We value your feedback, and look forward to bringing you the next great thing in concrete coatings...

WITH H&C[®] STAINS AND SEALERS, IT'S EASY TO ADD BEAUTY AND PROTECTION TO DRIVEWAYS, WALKWAYS, PATIOS, GARAGE FLOORS, AND OTHER CONCRETE AND MASONRY SURFACES.

To ensure a successful project, surface preparation is a critical step that allows your concrete coating to bond properly. Always be sure to follow all product instructions before applying your coating.

01

STEP 01

- First, clear the area to be coated.
- All surfaces must be clean, dry and free of grease, oil, paint and sealers.
- Remove oil and grease spots with a cleaner degreaser. We recommend H&C CONCRETEREADY CLEANER DEGREASER (See page 6).
- Sprinkle solution onto surface in 10'x10' sections, and allow to penetrate for 5-6 minutes.
- Scrub the area with a stiff bristle broom while rinsing with a garden hose.
- Make sure to rinse the concrete surface thoroughly and allow all surfaces to dry at least 24 hours before sealing.
- The concrete surface should be porous and able to absorb water. This indicates that the stain or sealer will properly adhere to the concrete surface.

Note about STEP 01:

To test absorption, spray various sections of the surface to be stained with water. The water should absorb and physically darken the concrete within 10-15 seconds.

02

STEP 02

- If the water does not absorb rapidly then the concrete is not porous. This will require either an acid etch using an etching solution or some mechanical means of abrasion.
- H&C CONCRETEREADY PHOSPHORIC ETCHING SOLUTION (See page 6) opens the pores of bare concrete so H&C concrete stains and sealers can bond properly with the substrate.
- Apply the etching solution from a plastic sprinkling can.
- Sprinkle evenly on the concrete. Chemical reaction (foaming and fizzing) will occur. Agitate with a stiff broom for 10 minutes or until bubbling stops.
- Triple rinse and allow to dry completely.
- Inspect the surface to ensure that cleaning and etching were successful. The surface should feel like 120-grit sandpaper, or rougher, and be free of all dirt and concrete dust.
- If you fail to achieve the proper profile, it may be necessary to repeat the process and etch again.
- After cleaning and etching, it is important to wait 24 hours before applying H&C stains or sealers.

03

STEP 03

- To repair low spots and spalled concrete for vertical or horizontal substrates use a patch and repair product.
- H&C CONCRETEREADY SINGLE-COMPONENT QUICK PATCH AND REPAIR (See page 7) is a fast and easy to use patching compound. It provides a strong bond to properly prepared concrete areas.
- Please note that patching compounds will generally be visible and may be detectable when used with H&C Solid or H&C Transparent Stains.

Following proper surface preparation rules allows the H&C coating to enhance and revitalize concrete and masonry surfaces for long-lasting protection. Remember to refer to your specific H&C product label for any application instructions.

For more detailed guidelines or technical assistance, please visit our website at www.hcconcrete.com.



Amazing concrete projects start with H&C® CONCRETEREADY® PHOSPHORIC ETCHING SOLUTION. The phosphoric acid-based solution creates a profile on the concrete so H&C concrete stains and sealers can bond properly with the surface.

Concentrate: Add water to make four gallons of etching solution out of one gallon of product.

FEATURES & BENEFITS:

- Prepares surface to be coated by opening the pores of the concrete
- Increases bond of H&C concrete coatings
- Sprinkle on – hose off
- Biodegradable – will not harm vegetation

RECOMMENDED USES:

- Concrete floors
- Driveways
- Patios
- Walkways
- Pool decks
- Masonry
- Walls
- Efflorescence remover for pavers

COVERAGE & DRYING TIME:

*** Coverage: 100-150 sq. ft. per gallon**

* Coverage will vary depending on the texture and porosity of the surface.

Drying time:

Allow the surface to dry thoroughly before applying any concrete stain or sealer. The finished surface should have a texture that feels like 120 grit sandpaper. If the surface remains smooth, re-etching may be required.

PRODUCT INFORMATION:

Description	SKU#	UPC#	SMIS	Pack
1 Gallon – Clear	50.160004-16	035777230046	650712300	2



H&C® CONCRETEREADY® CONCENTRATED CLEANER DEGREASER increases any coating's ability to bond with the surface. This heavy duty cleaner will remove oil, grease, brake and transmission fluid and antifreeze.

Concentrate: Add water to make 4 gallons of Cleaner Degreaser from one gallon of product.

FEATURES & BENEFITS:

- Extra-heavy-duty power to remove grease and oil stains
- Prepares surface for staining or sealing
- Increases penetration of H&C coating
- Use full strength for tough stains or diluted for milder cleaning
- Neutral pH based product

RECOMMENDED USES:

- Concrete floors
- Driveways
- Patios
- Walkways
- Pool decks
- Masonry
- Walls
- Pavers

COVERAGE & DRYING TIME:

*** Coverage: 100 sq. ft. per gallon at 50/50 dilution**

* Coverage will vary depending on the texture and porosity of the surface.

Drying time:

Allow surface to dry completely (18-24 hours recommended) before applying any stains or sealers. Allow the surface to dry 2-4 hours before applying H&C CONCRETEREADY ETCHING SOLUTION.

PRODUCT INFORMATION:

Description	SKU#	UPC#	SMIS	Pack
1/2 Gallon – Clear	50.170015-15	035777230053	650712318	4



Get concrete back to working order easily and quickly with H&C® CONCRETEREADY® SINGLE-COMPONENT QUICK PATCH AND REPAIR. Single-component, cement-based patching compound will restore the concrete as fast as possible.

FEATURES & BENEFITS:

- Quick and easy application – final setup time is 15-30 minutes
- Can provide a workable, no-slump patch
- May be used to repair above-or below-grade concrete
- Produces a bond stronger than the surrounding concrete

RECOMMENDED USES:

- Driveways
- Garage floors
- Patios
- Walkways
- Pool decks
- Basement floors
- Steps
- Sidewalks

COVERAGE & DRYING TIME:

5 pounds will equal approximately .045 cubic feet, or 1.2 sq. ft. at 1/2" depth. Maximum thickness is approximately 1".
Set time: 15-30 mins **Stain/Seal:** 1 hour

PRODUCT INFORMATION:

Description	SKU#	UPC#	SMIS	Pack
5 lb. / 1 Gallon Bucket	60.100709-99	035777230060	650712326	4

H&C® SHARKGRIP® SLIP-RESISTANT ADDITIVE is a micronized polymer with low-oil absorption and high-solvent resistance so it easily stirs into most oil-based and water-based paints and other coatings. And the low density allows it to stay well suspended in thin materials like stains and sealers.

FEATURES & BENEFITS:

- Puts the bite in concrete surfaces aiding in slip-resistance
- Long wearing; easy to walk on
- Will not affect the color of the topcoat
- Easy to use

RECOMMENDED USES:

- Inclined surfaces
- Driveways
- Garages
- Steps
- Patios
- Pool decks

COVERAGE & DRYING TIME:

Add contents of one 3.2 oz. container into one gallon of H&C Concrete Stain or Sealer.

PRODUCT INFORMATION:

Description	SKU#	UPC#	SMIS	Pack
3.2 oz. – Powder	50.155004-99	035777230015	650712276	12
16 oz. – Powder	50.155005-99	035777230022	650712284	6
19 lb. – Powder	50.155008-99	035777230039	650712292	1



H&C® SHIELD-CRETE® WATER-BASED EPOXY GARAGE FLOOR COATING is the simple way to give concrete surfaces a professional-looking finish. The all-inclusive kit contains an epoxy base color, activator, a bag of Deco-Flakes, a packet of cleaner/degreaser powder, a packet of slip-resistant additive and a detailed instruction sheet. Just mix and apply for a surface that resists wear and tear for years, including resistance to hot tire pickup, chemical agents and damage caused by gasoline, brake fluid, standing water and battery acid. Afterwards, clean up with just soap and water, and enjoy the glossy finish in five decorative colors.

FEATURES & BENEFITS:

- Water-based formulation for easy application and cleanup
- Hard, durable surface, resists wear and peeling for long-lasting beauty
- Super adhesion, resists hot tire pickup
- High-gloss epoxy with showroom-quality appearance
- Advanced polymer technology
- Covers up to 250 sq. ft. (1-car garage)
- Available in five colors

EACH KIT CONTAINS:

- Part A Color Hardener 78.4 oz.
- Part B Clear Epoxy 24 oz. Quart
- Cleaner/Degreaser 32 oz.
- Decorative Flakes 16 oz.
- Non-Skid Additive 2.4 oz.
- Stir Stick
- Instructions

PRODUCT INFORMATION:

Description	SKU#	UPC#	SMIS #	Pack	Description	SKU#	UPC#	SMIS #	Pack
1 Kit – Pewter	20.102100-99	035777229033	650711617	1	1 Gallon – Epoxy Part A	21.103104-16	035777467923	650964810	4
1 Kit – Beige	20.102200-99	035777229040	650711625	1	3.3 Gallon – Pewter Epoxy Part B	21.103205-20	035777467930	650964828	1
1 Kit – Firebrick Red	20.102300-99	035777229071	650711658	1	3.3 Gallon – Beige Epoxy Part B	21.103305-30	035777472040	650964901	1
1 Kit – Ivory	20.102400-99	035777229088	650711666	1	3.3 Gallon – Firebrick Red Epoxy Part B	21.103405-20	035777472095	650964919	1
1 Kit – Night Sky	20.102500-99	035777229095	650711674	1	3.3 Gallon – Ivory Epoxy Part B	21.103505-20	035777472101	650964927	1
					3.3 Gallon – Night Sky Epoxy Part B	21.103605-20	035777472118	650964935	1

*If used in its entirety the 1 lb. decorative flakes bag will cover 25% of the chosen colored epoxy coating.



RECOMMENDED USES:

- Garage floors
- Basement floors
- Storage areas
- Covered patios and landings
- Warehouse floors
- Commercial floors

COVERAGE & DRYING TIME:

Drying time, @ 77°F, 50% RH:
 temperature and humidity dependent
To touch: 6 hours
Recoat: Minimum 8 hours
Light traffic: 8-12 hours
Heavy traffic: 72-96 hours
Coefficient of friction: .74



Keep garage floors clean, and the Deco-Flakes of your epoxy coating locked in, with H&C® SHIELD-CRETE® ACRYLIC CLEAR GLAZE COAT. The clear, water-based acrylic sealer resists common chemical agents while maintaining a protective barrier for the decorative flakes in the SHIELD-CRETE WATER-BASED EPOXY GARAGE FLOOR COATING KIT. Covers a 2 1/2 car garage (400 sq. ft.).

FEATURES & BENEFITS:

- One-component, clear, water-based acrylic sealer
- Provides superior protection for SHIELD-CRETE DECO-FLAKES
- Glossy finish makes it easier to keep your garage floors clean
- Required when Deco-Flakes cover more than 50% of surface
- Goes on milky white and dries clear

RECOMMENDED USES:

- Garage floors
- Basement floors
- Commercial floors
- Laundry room floors
- Covered patios and landings

COVERAGE & DRYING TIME:

Coverage:

H&C Shield-Crete floors: 400 sq. ft. per gallon (a typical 2 1/2-car garage)

Bare concrete: 100 to 200 sq. ft. per gallon, depending on the porosity of the substrate

Drying time:

It will dry in about an hour to a clear gloss

If a second coat is desired, wait a minimum of 4 hours before applying

PRODUCT INFORMATION:

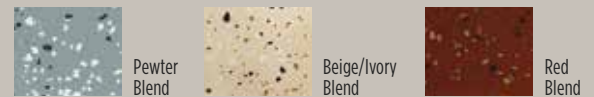
Description	SKU#	UPC#	SMIS	Pack
1 Gallon – Clear Glaze	20.103000-16	03577729101	650711682	4
5 Gallon – Clear Glaze	20.103005-20	035777472125	650964943	1



Provide a unique decorative finish with H&C® SHIELD-CRETE® DECO-FLAKES. Simply broadcast the flakes by tossing them high into the air onto the wet surface. Use different chip blends for a distinct mix-and-match look! And remember that garage floors are just the beginning. The epoxy coating and flakes can be used on any interior concrete floor, like basement floors, and some outdoor surfaces as well.

FEATURES & BENEFITS:

- Three chip blends
- Provides a unique decorative finish
- Can be mixed and matched with other blends
- Helps hide imperfections
- Easy application – simply broadcast the flakes by tossing them high into the air



RECOMMENDED USES:

- Laundry room floors
- Garage floors
- Storage areas
- Covered patios and landings
- Retaining walls
- Warehouse floors
- Commercial floors

COVERAGE & DRYING TIME:

Apply at desired ratio

PRODUCT INFORMATION:

Description	SKU#	UPC#	SMIS	Pack
Quart - 24 oz - Deco-Flakes – Pewter	20.104100-14	03577729132	650711716	6
Quart - 24 oz - Deco-Flakes – Beige	20.104200-14	03577729149	650711724	6
Quart - 24 oz - Deco-Flakes – Red	20.104300-14	03577729156	650711732	6



Protect your investment by using single component H&C® SHIELD-CRETE® SOLVENT-BASED CLEAR TOPCOAT. SHIELD-CRETE helps keep garage floors clean. This clear sealer resists common chemical agents while maintaining a protective barrier for the decorative flakes in the SHIELD-CRETE Water-Based Epoxy Garage Floor Coating Kit. Cover a 2 1/2 car garage (400 square feet) with our formula, making it easier to clean as well.

FEATURES & BENEFITS:

- One-component, clear solvent-based sealer
- Provides superior protection for SHIELD-CRETE Deco-Flakes
- Glossy finish makes it easier to keep your garage floors clean
- Required when Deco-Flakes cover more than 25% of the surface

RECOMMENDED USES:

- Garage floors
- Commercial floors
- Basement floors
- Laundry room floors
- Covered patios and landings

PRODUCT INFORMATION:

Description	SKU#	UPC#	SMIS	Pack
1 Gallon – Solvent-Based Clear Topcoat	20.105308-16	035777856895	650999006	4
5 Gallon – Solvent-Based Clear Topcoat	20.105309-20	035777856901	650999014	1
1 Gallon – Low VOC Solvent-Based Clear Topcoat	20.105310-16	035777856918	650999022	4
5 Gallon – Low VOC Solvent-Based Clear Topcoat	20.105311-20	035777856925	650999030	1



COVERAGE & DRYING TIME:

Coverage:	sq. ft./gal	Drying time, @ 77°F, 50% RH:
Concrete floors	200-300	temperature and humidity dependent
Porous concrete	150-250	To touch: 30 mins
Concrete block	100-150	Recoat: 4 hours
Split-faced block	75-125	Light foot traffic: Overnight
Fluted block	50-100	Tables, chairs and heavy traffic: 72 hours
Brick (clay)	100-150	

*Lightweight split-faced block may require a film forming product due to its extreme porosity.

SHIELD-CRETE[®] XL HIGH PERFORMANCE GARAGE EPOXY



H&C[®] SHIELD-CRETE[®] XL is our best high-performing garage floor coating, with superior adhesion and excellent hot tire pickup and tire marking protection. For professionals that want to provide their customers with the best in garage floor protection, H&C SHIELD-CRETE XL delivers. Available in Gray Taupe and Sand Taupe, we also offer key packaging sizes so contractors can select the right sizes to efficiently plan their projects.



Gray
Taupe



Sand
Taupe

FEATURES & BENEFITS:

- 100% solids
- Extremely durable surface and maximum adhesion for long-lasting performance
- Resists hot tire pickup and superior tire marking to maintain a showroom finish
- High-gloss epoxy with showroom-quality appearance
- Abrasion and chemical resistant for long-lasting beauty and protection

RECOMMENDED USES:

- Garage floors
- Basement floors
- Covered patios and landings
- Warehouse and commercial floors
- Any interior, properly prepared concrete surface

EPOXY BASECOATS:

MIX FOR 1 WORKING / CATALYZED GALLON

Description	SKU#	UPC#	SMIS #	Pack
1/2 Gallon — High Performance Garage Epoxy Part B Hardener	20.105301-15	035777856772	650998891	1
1 Gallon — High Performance Garage Epoxy Part A Epoxy Gray Taupe	20.105302-16	035777856802	650998909	4
1 Gallon — High Performance Garage Epoxy Part A Epoxy Sand Taupe	20.105303-16	035777856826	650998925	4



COVERAGE & DRYING TIME:

Coverage: sq. ft./gal
Garage floors 50-160

Shield-Crete XL HP Hardener Part B
Drying time, @ 72°F-95°F, 50% RH:
temperature and humidity dependent

To touch: 4-12 hours
Recoat: 6-8 hours
Light foot traffic: 18-24 hours
Heavy foot traffic: 60-72 hours
Pot life: 20-40 minutes
Sweat-in Time None

Shield-Crete XL HP Fast Set Hardener Part B
Drying time, @ 72°F, 50% RH:
temperature and humidity dependent

To touch: 4 hours
Recoat: 8-72 hours
Light foot traffic: 10-12 hours
Heavy foot traffic: 24-48 hours
Pot life: 25 minutes
Sweat-in Time None

EPOXIES:

MIX FOR 4.4 WORKING / CATALYZED GALLONS

Description	SKU#	UPC#	SMIS #	Pack
1.1 Gallon — High Performance Garage Epoxy Part B Fast Set Hardener	20.105304-36	035777856833	650998933	2
1.1 Gallon — High Performance Garage Epoxy Part B Hardener	20.105305-36	035777856840	650998941	2
3.3 Gallon — High Performance Garage Epoxy Part A Epoxy Gray Taupe	20.105306-19	035777856857	650998966	1
3.3 Gallon — High Performance Garage Epoxy Part A Epoxy Sand Taupe	20.105307-19	035777856864	650998974	1



H&C® COLORTOP™ WATER-BASED SOLID COLOR CONCRETE STAIN provides long-lasting, durable and a decorative finish to interior or exterior concrete and masonry surfaces. Fortified with silicone, this easy-to apply solid color stain comes in prepackaged colors and three tint base options.

FEATURES & BENEFITS:

- Decorates, seals and protects concrete surfaces
- Resistant to salts, acids, alkalis, water, mildew, UV rays, oil and wet or dry abrasion
- Water-based formulation
- Available in a variety of ready-to-use and tintable colors (See page 17)
- Suitable for interior use, low odor
- Can be used on new or previously painted concrete surfaces with proper preparation, as well as on asphalt surfaces

RECOMMENDED USES:

- Patios and walkways
- Vertical of stadium supports
- Vertical of bridges/structures
- Parking garages
- Laundry room floors
- Athletic courts
- Pool decks
- Precast concrete
- Tilt-up concrete
- Block

PRODUCT INFORMATION:

Description	SKU#	UPC#	SMIS #	Pack	Description	SKU#	UPC#	SMIS #	Pack
1 Gallon - Tint Base — Extra White	20.101214-16	035777228876	650711450	4	1 Gallon — Gull Gray	20.101284-16	035777228937	650711518	4
5 Gallon - Tint Base — Extra White	20.101215-20	035777228883	650711468	1	5 Gallon — Gull Gray**	20.101285-20	035777228944	650711526	1
1 Gallon - Tint Base — Deep Tone	20.102214-16	035777229057	650711633	4	1 Gallon — Pearl Gray	20.101314-16	035777228951	650711534	4
5 Gallon - Tint Base — Deep Tone	20.102215-20	035777229064	650711641	1	5 Gallon — Pearl Gray**	20.101315-20	035777228968	650711542	1
1 Gallon - Tint Base — Ultra Deep	20.103214-16	035777229118	650711690	4	1 Gallon — Silver Gray**	20.101344-16	035777228982	650711567	4
5 Gallon - Tint Base — Ultra Deep	20.103215-20	035777229125	650711708	1	1 Gallon — Terracotta	20.101354-16	035777228999	650711575	4
1 Gallon — Clear*	20.101204-16	035777328187	650923014	4	5 Gallon — Terracotta	20.101355-20	035777229002	650711583	1
5 Gallon — Clear*	20.101205-20	035777328194	650923022	1	1 Gallon — Tile Red	20.101364-16	035777229019	650711591	4
1 Gallon — Black	20.101224-16	035777228890	650711476	4	5 Gallon — Tile Red	20.101365-20	035777229026	650711609	1
5 Gallon — Black**	20.101225-20	035777228906	650711484	1	1 Gallon — Bombay	30.101104-16	035777229255	650711815	4
1 Gallon — Sandstone	20.101324-16	035777228975	650711559	4	5 Gallon — Bombay	20.101255-20	035777228920	650711500	1

* Clear is not to be tinted. ** Special Order Only



COVERAGE & DRYING TIME:

* Coverage:	sq. ft./gal	Drying time, @ 77°F, 50% RH:
Concrete floors	200-300	temperature and humidity dependent
Porous concrete	150-250	To touch: 30 minutes
Asphalt	200-250	Light traffic and recoat: 2 hours
Concrete block	100-150	Heavy traffic: 72-96 hours
Split faced block	75-125	Static coefficient of friction: 9
Fluted block	50-100	Coefficient of friction: .74
Brick (clay)	100-150	

* Coverage will vary depending on the porosity and texture of the substrate



Provide superior protection and beauty to both interior and exterior concrete and masonry surfaces with H&C® COLORTOP™ WATER-BASED SOLID COLOR CONCRETE STAIN 50. This formula bonds to concrete and forms a tough shield, so it doesn't fade, peel or flake like paint. Available in a variety of tintable colors, this easy-to-apply concrete stain is ideal for high-pH* surfaces and is nationally compliant.

FEATURES & BENEFITS:

- Decorates, seals and protects concrete surfaces
- Resistant to salts, acids, alkalis, water, mildew, UV rays, oil and wet or dry abrasion
- Water-based formulation
- Available in a variety of tintable colors - see page 17
- Suitable for interior or exterior use
- Low odor
- Can be used on new or previously painted concrete surfaces with proper preparation, as well as on asphalt surfaces

RECOMMENDED USES:

- Patios and walkways
- Pool decks
- Concrete block
- Stucco walls
- Basement floors
- Laundry room floors

PRODUCT INFORMATION:

Description	SKU#	UPC#	SMIS	Pack
1 Gallon - Tint Base — Extra White	20.104414-16	035777229163	650711740	4
5 Gallon - Tint Base — Extra White	20.104415-20	035777229187	650711757	1
1 Gallon - Tint Base — Deep	20.104514-16	035777229194	650711765	4
5 Gallon - Tint Base — Deep	20.104515-20	035777229200	650711773	1
1 Gallon - Tint Base — Ultra Deep	20.104614-16	035777229217	650711781	4
5 Gallon - Tint Base — Ultra Deep	20.104615-20	035777229231	650711799	1



COVERAGE & DRYING TIME:

Coverage:	sq. ft./gal	Drying time, @ 77°F, 50% RH:
Concrete floors	300-400	temperature and humidity dependent
Porous concrete	200-300	To touch: 1 hour
Asphalt	00-300	Recoat: 4 hours
Concrete block	100-150	Light foot traffic: 24 hours
Split-faced block	75-125	Tables, chairs and heavy traffic: 48 hours
Fluted block	50-100	Full cure: 7-14 days
Brick (clay)	100-150	

High-pH is over 10



Create a beautiful landscape that is completely unique with H&C® COLORTOP™ SOLVENT-BASED SOLID COLOR CONCRETE SEALER. This opaque, waterproofing sealer is formulated to bond with exterior bare concrete and masonry surfaces. It provides a long-lasting yet decorative finish. COLORTOP SOLVENT-BASED SOLID is available in over 30 tintable colors and a variety of popular prepackaged semi-gloss colors, as well as clear, which has a gloss finish.

FEATURES & BENEFITS:

- Decorates, seals and protects bare concrete surfaces
- Solvent-based silicone acrylic formulation
- For use on bare exterior horizontal or vertical surfaces
- Resistant to salts, acids, alkalis, water, UV rays, oil, wet or dry abrasion and premature color loss
- Available in a variety of ready-to-use and tintable colors - see page 17
- Suitable for vehicular traffic

RECOMMENDED USES:

- Driveways
- Patios and walkways
- Pool decks
- Garage floors
- Concrete athletic courts
- Stadium supports
- Bridges/structures
- Parking garages
- Block and stucco walls

PRODUCT INFORMATION:

Description	SKU#	UPC#	SMIS	Pack	Description	SKU#	UPC#	SMIS	Pack	Description	SKU#	UPC#	SMIS	Pack
1 Gallon-Tint Base-Extra White	10.114014-16	035777228784	650711419	4	1 Gallon – Bombay**	10.100054-16	035777228562	650711211	4	1 Gallon – Pearl Gray**	10.100114-16	035777228678	650711510	4
5 Gallon-Tint Base-Extra White	10.114015-20	035777228821	650711427	1	5 Gallon – Bombay**	10.100055-20	035777228579	650711229	1	5 Gallon – Pearl Gray**	10.100115-20	035777228685	650711528	1
1 Gallon-Tint Base-Deep	10.116104-16	035777228838	650711435	4	1 Gallon – Brick Red**	10.100064-16	035777228586	650711237	4	1 Gallon – Sandstone**	10.100124-16	035777228692	650711536	4
5 Gallon-Tint Base-Deep	10.116105-20	035777228845	650711443	1	5 Gallon – Brick Red**	10.100065-20	035777228593	650711245	1	5 Gallon – Sandstone**	10.100125-20	035777228708	650711544	1
1 Gallon-Clear*	10.100004-16	035777328101	650922974	4	1 Gallon – Charcoal**	10.100074-16	035777228616	650711252	4	1 Gallon – Silver Gray**	10.100144-16	035777228715	650711551	4
5 Gallon-Clear*	10.100005-20	035777328118	650922982	1	5 Gallon – Charcoal**	10.100075-20	035777228623	650711260	1	5 Gallon – Silver Gray**	10.100145-20	035777228722	650711569	1
1 Gallon-Black**	10.100024-16	035777230077	650711179	4	1 Gallon – Gull Gray**	10.100084-16	035777228630	650711278	4	1 Gallon – Terracotta**	10.100154-16	035777228739	650711577	4
5 Gallon – Black**	10.100025-20	035777230084	650711187	1	5 Gallon – Gull Gray**	10.100085-20	035777228647	650711286	1	5 Gallon – Terracotta**	10.100155-20	035777228753	650711585	1
1 Gallon – Autumn Brown**	10.100034-16	035777228548	650711195	4	1 Gallon – Patio Green**	10.100104-16	035777228654	650711294	4	1 Gallon – Tile Red**	10.100164-16	035777228760	650711593	4
5 Gallon – Autumn Brown**	10.100035-20	035777228555	650711203	1	5 Gallon – Patio Green**	10.100105-20	035777228661	650711302	1	5 Gallon – Tile Red**	10.100165-20	035777228777	650711401	1

* Clear is not to be tinted. ** Special Order Only



COVERAGE & DRYING TIME:

* Coverage:	sq. ft./gal	Drying time, @ 77°F, 50% RH:
Concrete floors	200-250	temperature and humidity dependent
Porous concrete	150-200	Touch: 15 minutes
Concrete block	125-150	Light foot traffic: 1 hour
Split faced block	100-125	Light traffic & recoat: 12 hours
Fluted block	75-100	Heavy traffic: 72 - 96hrs
Brick (clay)	100-150	Static coefficient of friction: .6
* Coverage will vary depending on the porosity and texture of the substrate		VOC: 542 g/L; 4.52 lb/gal**
** May vary by color		



H&C® COLORTOP™ SOLVENT-BASED SOLID COLOR CONCRETE SEALER 250 is H&C's Low VOC solvent-based sealer that provides a durable finish that extends the life of concrete and masonry surfaces. It penetrates deeply into the surface to form a tough shield, so it won't peel, fade or flake over time. It is resistant to salt, acids, alkalis, water, UV rays, oil and heavy traffic. Create a beautiful and expensive-looking landscape that is completely unique. Choose from our pre-mixed or custom-tinted colors.

FEATURES & BENEFITS:

- Decorates, seals and protects bare concrete surfaces
- For use on bare exterior horizontal or vertical surfaces
- Available in a variety of ready-to-use and tintable colors - see page 17
- Suitable for vehicular traffic
- Designed to be used on bare, unsealed concrete block, brick, stucco or any other masonry surface
- Satin finish preserves delicate architectural details
- <250 VOC version for most regulated areas

RECOMMENDED USES:

- Stadium supports
- Bridges and structures
- Parking garages
- Patios and walkways
- Block and stucco walls
- Driveways
- Pool decks
- Garage floors
- Concrete athletic courts

PRODUCT INFORMATION:

Description	SKU#	UPC#	SMIS	Pack	Description	SKU#	UPC#	SMIS	Pack	Description	SKU#	UPC#	SMIS	Pack
1 Gallon - Tint Base - White	30.114014-16	035777229439	650711997	4	1 Gallon - Sandstone	30.101204-16	035777229279	650711831	4	1 Gallon - Patio Green	30.101704-16	035777229354	650711914	4
5 Gallon - Tint Base - White	30.114015-2	035777229446	650712003	1	5 Gallon - Sandstone	30.101205-20	035777229286	650711849	1	5 Gallon - Patio Green	30.101705-20	035777229361	650711922	1
1 Gallon - Tint Base - Deep	30.116014-16	035777229477	650712011	4	1 Gallon - Black	30.101404-16	035777229293	650711856	4	1 Gallon - Pearl Gray	30.101804-16	035777229378	650711930	4
5 Gallon - Tint Base - Deep	30.116015-20	035777229484	650712029	1	5 Gallon - Black	30.101405-20	035777229309	650711864	1	5 Gallon - Pearl Gray	30.101805-20	035777229385	650711948	1
1 Gallon - Clear	30.100004-16	035777328132	650922990	4	1 Gallon - Tile Red	30.101504-16	035777229316	650711872	4	1 Gallon - Silver Gray	30.101904-16	035777229392	650711955	4
5 Gallon - Clear	30.100005-20	035777328149	650923006	1	5 Gallon - Tile Red	30.101505-20	035777229323	650711880	1	5 Gallon - Silver Gray	30.101905-20	035777229408	650711963	1
1 Gallon - Bombay	30.101104-16	035777229255	650711815	4	1 Gallon - Terracotta	30.101604-16	035777229330	650711898	4					
5 Gallon - Bombay	30.101105-20	035777229262	650711823	1	5 Gallon - Terracotta	30.101605-20	035777229347	650711906	1					



COVERAGE & DRYING TIME:

* Coverage:	sq. ft./gal	Drying time, @ 77°F, 50% RH:
Concrete floors	200-250	temperature and humidity dependent
Porous concrete	150-200	Touch: 15 minutes
Concrete block	125-150	Light foot traffic: 1 hour
Split faced block	100-125	Light traffic & recoat: 12 hours
Fluted block	75-100	Heavy traffic: 72 - 96hrs
Brick (clay)	100-150	Static coefficient of friction: .6

* Coverage will vary depending on the porosity and texture of the substrate



Give your concrete decks and floors a long life with ACRYLA-DECK® WATER-BASED SOLID COLOR 100% ACRYLIC DECK COATING, a high-satin-sheen floor stain designed for interior and exterior residential, architectural, commercial and light-industrial spaces.

FEATURES & BENEFITS:

- Highly resistant to pool chemicals and many other household chemicals for long-lasting beauty and protection
- Water-based formulation allows for easier application and cleanup
- Excellent color retention and chalk resistance
- Outstanding resistance to blistering
- Tintable for various custom color options (See page 17)

RECOMMENDED USES:

- Pool decks
- Patios
- Walkways
- Concrete floors
- Concrete decks

COVERAGE & DRYING TIME:

* Coverage:	sq. ft./gal	Drying time:	
Concrete floors	200-300	Touch:	1 hour
Porous concrete	150-250	Recoat:	4 hours
Concrete block	100-150	Light foot traffic:	2 hours
Split-faced block	75-125	Heavy traffic:	72-96 hours
Fluted block	50-100	Full cure:	7-14 days
Brick (clay)	100-150		
Asphalt	200-250		
Wood	250-350		

* Coverage will vary depending on the porosity and texture of the substrate.

PRODUCT INFORMATION:

Description	SKU#	UPC#	SMIS	Pack
1 Gallon - Tint Base — Extra White	25.100214-16	035777311936	650902323	4
5 Gallon - Tint Base — Extra White	25.100215-20	035777311943	650902331	1
1 Gallon - Tint Base — Deep	25.100314-16	035777311967	650902356	4
5 Gallon - Tint Base — Deep	25.100315-20	035777318126	650910565	1



H&C® ACRYLA-DECK® WATER-BASED SOLID COLOR HI-BUILD DECK COATING WITH COOL FEEL™ TECHNOLOGY is designed to reduce the temperature of concrete surfaces exposed to UV rays by up to 20 degrees F.* A high-quality, hi-build latex deck coating that provides superior protection and beauty for both exterior and interior concrete. It may be applied to bare concrete or previously painted surfaces.

* Temperature reduction may differ due to factors such as: ambient temperature, time of day and the amount of direct sunlight on the surface.

FEATURES & BENEFITS:

- Cool Feel Technology reduces the temperature of concrete surfaces exposed to UV rays by up to 20 degrees F
- Highly resistant to pool chemicals and many other household chemicals for long-lasting beauty and protection
- Hi-build coating limits the surface from becoming slippery compared to conventional pool coatings
- Water-based formulation allows for easier application and cleanup
- Extra White and Deep Bases available for various custom color options

RECOMMENDED USES:

- Pool decks
- Patios
- Walkways
- Concrete floors
- Concrete decks

COVERAGE & DRYING TIME:

* Coverage:	sq. ft./gal	Drying time:	
Concrete floors	200-300	Touch:	1 hour
Porous concrete	150-250	Recoat:	2 hours
Concrete block	100-150	Light foot traffic:	2 hours
Split-faced block	75-125	Heavy traffic:	72-96 hours
Fluted block	50-100	Full cure:	7-14 days
Brick (clay)	100-150		
Asphalt	200-250		
Wood	250-350		

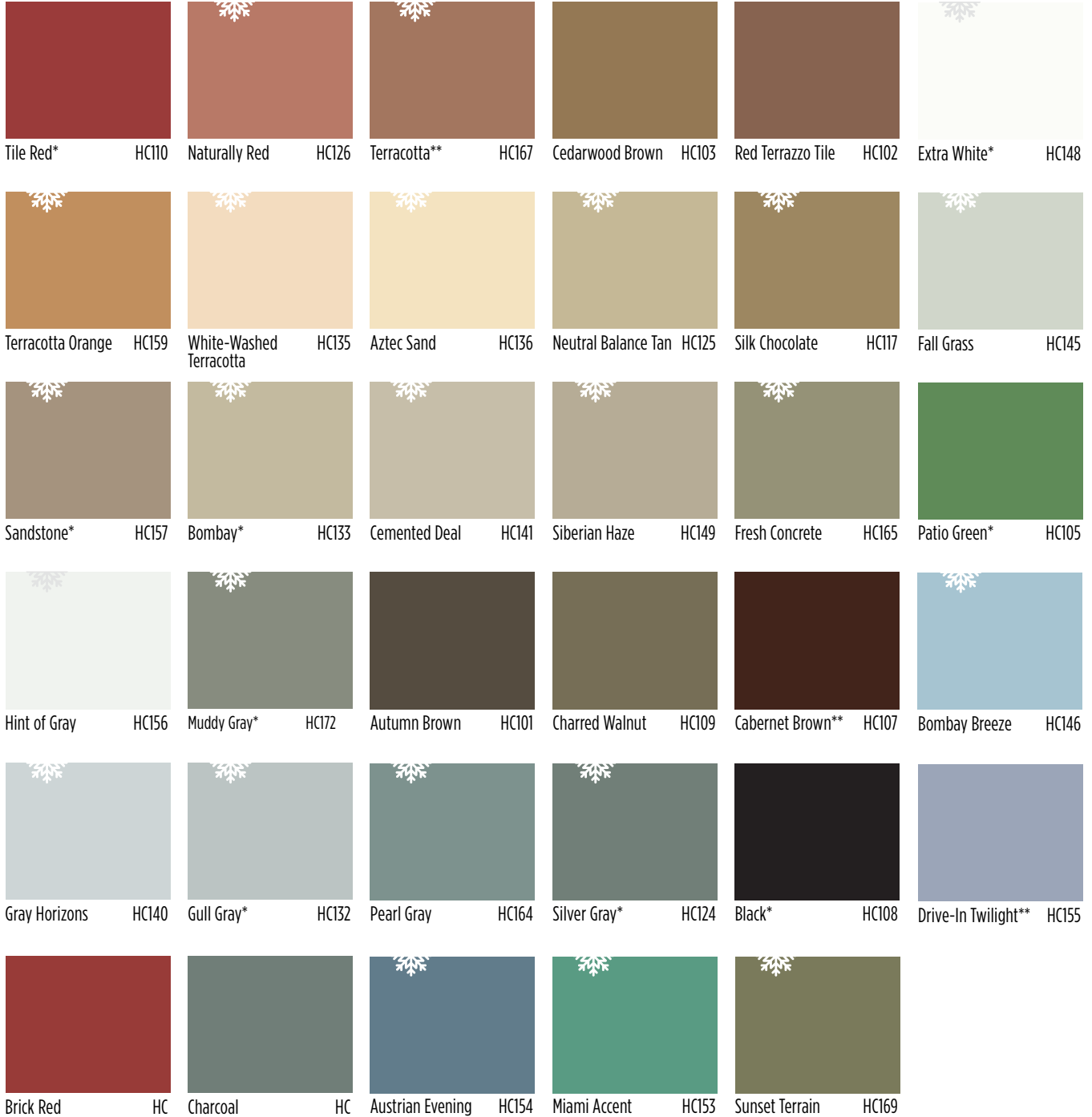
* Coverage will vary depending on the porosity and texture of the substrate

PRODUCT INFORMATION:

Description	SKU#	UPC#	SMIS	Pack
1 Gallon - Tint Base — Extra White	25.101214-16	035777331880	650924814	4
5 Gallon - Tint Base — Extra White	25.101215-20	035777331903	650924822	1
1 Gallon - Tint Base — Deep	25.101314-16	035777331927	650924830	4
5 Gallon - Tint Base — Deep	25.101315-20	035777332009	650924848	1

AVAILABLE COLORS

Tintable palette colors for COLORTOP™ and ACRYLA-DECK® Systems are a representation. Actual color will vary due to the concrete finishing method (how smooth or porous the surface is), producing a mottling or distressed appearance.



* Colors available in COLORTOP Solid Color, ACRYLA-DECK 100% Acrylic Deck Coating and ACRYLA-DECK COOL FEEL™.

* COOL FEEL Technology helps enable a surface temperature reduction.

** Color available only in Color Top Water-Based Solid Color

**May be available as pre-mixed colors

HEAVY SHIELD™ WATER-BASED SOLID COLOR CONCRETE & DRIVEWAY ENAMEL / STAIN



H&C® HEAVY SHIELD™ CONCRETE & DRIVEWAY ENAMEL / STAIN is a solid color, water-based stain designed to add deep-penetrating protection and long-lasting beauty for both exterior and interior concrete. With superior cross-linking properties, H&C HEAVY SHIELD resists tire marking and hot-tire pickup, provides excellent adhesion, abrasion protection, and chemical resistance while delivering a quality water-based stain that withstands vehicular traffic.

FEATURES & BENEFITS:

- Provides a durable finish for excellent abrasion resistance that extends the life of concrete and masonry surfaces
- Highly resistant to garage, household, and pool chemicals for long lasting beauty and protection
- Water-based formulation allows for easier application and cleanup
- Can be applied to previously painted surfaces with proper preparation
- Withstands vehicular traffic, tire marking and hot-tire pickup

RECOMMENDED USES:

- Patios & walkways
- Pool decks
- Athletic courts
- Parking garages
- Block, precast concrete, tilt-up concrete
- Basement floors
- Laundry room floors

PRODUCT INFORMATION:

Description	SKU#	UPC#	SMIS#	Pack	Description	SKU#	UPC#	SMIS#	Pack
1 Gallon – Extra White	35.100214	035777229033	650990146	1	5 Gallon – Extra White	35.100215	035777848814	650990260	1
1 Gallon – Deep Base	35.100314	035777849309	650990757	1	5 Gallon – Deep Base	35.100315	035777849316	650990781	1
1 Gallon – Ultra Deep	35.100414	035777849330	650990807	1	5 Gallon – Ultra Deep	35.100415	035777849347	650990815	1



COVERAGE & DRYING TIME:

* Coverage:	sq. ft./gal	Drying time:	
Concrete floors	200-300	Touch:	30 minutes
Porous concrete	150-200	Light foot traffic:	2 hours
Concrete block	100-150	Heavy traffic:	48 hours
Split faced block	75-125	Recoat	2 hours
Fluted block	50-100	Full cure:	7-14 days
Brick (clay)	100-150		

* Coverage will vary depending on the porosity and texture of the substrate

AVAILABLE COLORS

Tintable palette colors for HEAVYSHIELD Systems are a representation. Actual color will vary due to the concrete finishing method (how smooth or porous the surface is), producing a mottling or distressed appearance.

					
Tile Red HC110	Naturally Red HC126	Terracotta HC167	Cedarwood Brown HC103	Red Terrazzo Tile HC102	Extra White HC148
					
Terracotta Orange HC159	White-Washed Terracotta HC135	Aztec Sand HC136	Neutral Balance Tan HC125	Silk Chocolate HC117	Fall Grass HC145
					
Sandstone HC157	Bombay HC133	Cemented Deal HC141	Siberian Haze HC149	Fresh Concrete HC165	Patio Green HC105
					
Hint of Gray HC156	Muddy Gray HC172	Autumn Brown HC101	Charred Walnut HC109	Cabernet Brown HC107	Bombay Breeze HC146
					
Gray Horizons HC140	Gull Gray HC132	Pearl Gray HC164	Silver Gray HC124	Black HC108	Drive-In Twilight* HC155
					
Brick Red HC02	Charcoal	Austrian Evening HC154	Miami Accent HC153	Sunset Terrain HC169	



H&C® INFUSION® WATER-BASED SEMI-TRANSPARENT DECORATIVE STAIN lets you achieve a layered, faux or single-color look in less time than acid stains. Proper profiling (etching or grinding) is required prior to application to open the pores of the concrete. When layering stain, apply lighter colors first. To finish and complete the project, the stain must be sealed.

FEATURES & BENEFITS:

- Available in 16 packaged colors
- Water-based formulation allows for easier application and cleanup
- UV resistant
- Can be dilute up to 4:1 with water for color variation and increased coverage rates
- Interior and exterior use
- Quick turnaround. Recoat or seal in 4–6 hours
- No neutralization required

RECOMMENDED USES:

- Pool decks
- Patios and walkways
- Garages
- Driveways
- Interior floors
- Commercial floors
- Basement floors

PRODUCT INFORMATION:

Description	SKU#	UPC#	SMIS	Pack	Description	SKU#	UPC#	SMIS	Pack	Description	SKU#	UPC#	SMIS	Pack
1 Gallon — Arctic Stone	45.102014-16	035777229491	650712037	2	1 Gallon — Cordovan	45.102064-16	035777229699	650712086	2	1 Gallon — Cork	45.102134-16	035777229897	650712151	2
1 Gallon — Tumbled Stone	45.102024-16	035777229507	650712045	2	1 Gallon — Henna	45.102074-16	035777229705	650712094	2	1 Gallon — Dewy Blade	45.102144-16	035777229903	650712169	2
1 Gallon — Obsidian	45.102034-16	035777229514	650712052	2	1 Gallon — Dahlia Red	45.102084-16	035777229729	650712102	2	1 Gallon — Moss	45.102154-16	035777229910	650712177	2
1 Gallon — Espresso	45.102044-16	035777229613	650712060	2	1 Gallon — Cardinal Red	45.102094-16	035777229828	650712110	2	1 Gallon — Marina Blue	45.102164-16	035777229927	650712185	2
1 Gallon — Cocoa Bean	45.102054-16	035777229668	650712078	2	1 Gallon — Pumpkin Spice	45.102104-16	035777229842	650712128	2					
1 Gallon — Gold Leaf	45.102124-16	035777229880	650712144	2	1 Gallon — Autumn Breeze	45.102114-16	035777229866	650712136	2					



COVERAGE & DRYING TIME:

* Coverage: **200 sq. ft./gal** **Drying time: @ 77°F 50% RH:**
 Temperature and humidity dependent
Recoat: 4-6 hours
Sealing: 4-6 hours

* Coverage will vary depending on the porosity and texture of the concrete.

AVAILABLE COLORS

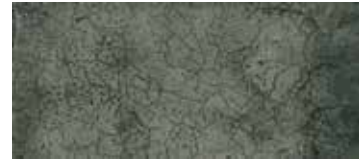
These colors are a representation. Actual color will vary due to the concrete finishing method (how smooth or porous the surface is), producing a mottling or distressed appearance. Colors are on a gray concrete base and stain is diluted with water 1:1. Colors are representative of product used with a solvent-based sealer.



Arctic Stone



Tumbled Stone



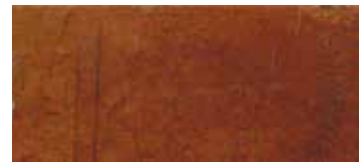
Obsidian



Espresso



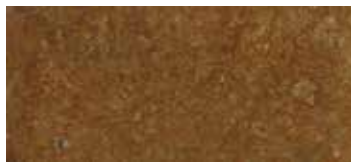
Cocoa Bean



Cordovan



Henna



Dahlia Red



Cardinal Red



Pumpkin Spice



Autumn Breeze



Gold Leaf



Cork



Dewy Blade



Moss



Marina Blue



H&C® CLARISHIELD® OIL-BASED CONCRETE SEALER is an exterior waterproofing sealer that adds sheen and durability to both vertical and horizontal brick, stone, masonry and mortar- or epoxy-set natural stone. It can also be used as a sealer on flagstone, brick or other cementitious materials. It is suitable for use on traffic-bearing surfaces. It is designed for use over bare concrete or H&C® COLORTOP™ Solvent-Based Solid Color Concrete Sealer. The non-yellowing clear surface protects against UV rays, water seepage and common chemicals.

FEATURES & BENEFITS:

- Seals and protects cement surfaces
- Provides a durable, glossy finish that extends the life of concrete and masonry surfaces
- Resists water, pool chemicals, UV rays, salt, alkalis, oil, gasoline and hot-tire marks
- Low film build to maintain architectural details

RECOMMENDED USES:

- Driveways
- Patios and walkways
- Pool decks
- Garage floors
- Parking garages
- Concrete retaining walls
- Flagstone walls and walkways
- Masonry and brick walls
- Cement block

PRODUCT INFORMATION:

Description	SKU#	UPC#	SMS	Pack
1 Gallon	50.120234-16	035777229934	650712193	4
5 Gallon	50.120235-20	035777229941	650712201	1



COVERAGE & DRYING TIME:

Coverage:	200 sq. ft./gal	Drying time: @ 77°F 50% RH:
Concrete floors	200-300	temperature and humidity dependent
Porous concrete	150-250	Touch: 30 minutes
Concrete block	100-150	Recoat: 4 hours
Split faced block	75-125	Light foot traffic: Overnight
Fluted block	50-100	Heavy traffic: 72 hours
Brick (clay)	100-150	Coefficient of friction:
		Without SharkGrip®: .6
		With SharkGrip: .84
		VOC: 643 g/L; 5.37 lb/gallon



It's easy to make bare and previously painted or stained concrete surfaces shine with H&C® CLARISHIELD® WATER-BASED WET LOOK CONCRETE SEALER. It provides a durable gloss finish that extends the life of concrete and masonry surfaces. The water-based formula leaves no messy residues, just an easy cleanup with soap and water. Stir in H&C® SHARKGRIP® SLIP-RESISTANT ADDITIVE to make inclined surfaces or damp areas safer.

FEATURES & BENEFITS:

- Can be used on bare or painted concrete and masonry surfaces
- Ideal gloss finish over COLORTOP™ WATER-BASED SOLID COLOR CONCRETE STAIN
- Rolls on milky white and dries clear
- Penetrates deeply to form a tough shield
- Low film build to maintain architectural details
- Resists damage from water, salt, UV rays, oil, gasoline, cleaning agents and heavy traffic

RECOMMENDED USES:

- Driveways
- Patios and walkways
- Pool decks
- Garage floors
- Athletic courts
- Stadium supports
- Bridges and bridge structures
- Parking garages
- Block and stucco walls

COVERAGE & DRYING TIME:

Coverage:	200 sq. ft./gal	Drying time:	
Concrete floors	100-200	Touch:	1 hour
Concrete block	100-150	Recoat:	2 hours
Previously coated concrete	200-300	Light foot traffic:	24 hours
		Heavy traffic:	72-96 hours
Porous concrete	100-200		
Porous decorative block	75-100		

PRODUCT INFORMATION:

Description	SKU#	UPC#	SMIS	Pack
1 Gallon	50.148154-16	03577729996	650712250	4
5 Gallon	50.148155-20	035777230008	650712268	1



H&C® CLARISHIELD® SOLVENT-BASED 250 CLEAR CONCRETE SEALER is a gloss sealer that enhances and protects bare concrete, previously coated and other masonry surfaces. It complies with ASTM C309 standard specifications for liquid membrane. With a VOC level less than 250 grams/liter, H&C CLARISHIELD SOLVENT-BASED 250 seals and protects cement surfaces from water, pool chemicals, UV rays and other harmful elements.

FEATURES & BENEFITS:

- Provides a durable, glossy finish that extends the life of concrete and masonry surfaces
- Crystal clear, non-yellowing
- Resists water, pool chemicals, UV rays, salt, alkalis, oil, gasoline and hot tire marks
- Can be used as a cure and seal when applied to freshly placed concrete. *Refer to product data
- Low film build to maintain architectural details

RECOMMENDED USES:

- Driveways
- Patios and walkways
- Pool decks
- Garage floors
- Parking garages

COVERAGE & DRYING TIME:

Coverage:	200 sq. ft./gal	Drying time, @ 77°F 50% RH:	
Concrete floors	200-300	temperature and humidity dependent	
Porous concrete	150-250	Touch:	30 minutes
Concrete block	100-150	Recoat:	4 hours
Split faced block	75-125	Light foot traffic:	Overnight
Fluted block	50-100	Heavy traffic:	72 hours
Brick (clay)	100-150	VOC:	<250 g/L

PRODUCT INFORMATION:

Description	SKU#	UPC#	SMIS	Pack
1 Gallon	30.102004-16	03577729415	650711971	4
5 Gallon	30.102005-20	03577729422	650711989	1



H&C® ULTRAPAVER® WATER-BASED PAVES SEALERS protect pavers from weed growth. Both Gloss and Natural protect and prolong the natural beauty only pavers can bring to an outdoor living area. H&C ULTRAPAVER applies milky white and dries clear to ensure complete coverage, and is extremely easy to apply. It provides excellent weather resistance, while protecting your investment against water damage. One gallon covers 100-150 square feet, depending on porosity. H&C ULTRAPAVER is solvent-free and VOC compliant.

FEATURES & BENEFITS:

- Provides protective coating to pavers
- Water and weather resistant
- Water-based formulation
- Paver sealer natural locks in joint sand
- Rolls on milky white, dries clear
- VOC compliant
- Withstands vehicular traffic
- Maintains natural look of pavers

RECOMMENDED USES:

- Patios and walkways
- Driveways
- Pool decks
- Brick or concrete pavers

COVERAGE & DRYING TIME:

*** Coverage:**
On standard concrete or masonry pavers: 100-150 sq. ft./gallon

*** Coverage will vary depending on paver porosity and texture.**

Drying time:
Touch: 1 hour
Light foot traffic/recoat: 4 hours
Foot traffic: 24 hours
Heavy traffic: 72-96 hours

PRODUCT INFORMATION:

Description	SKU#	UPC#	SMIS	Pack
1 Gallon — Natural	50.146054-16	035777229958	650712219	2
5 Gallon — Natural	50.146055-20	035777229965	650712227	1
1 Gallon — Gloss	50.147054-16	035777229972	650712235	2
5 Gallon — Gloss	50.147055-20	035777229989	650712243	1



H&C® ULTRAPAVER® SOLVENT-BASED GLOSS PAVES SEALER is a premium quality sealer designed to rejuvenate the color in your pavers. Its deep penetrating xylene-based formula will solve efflorescence issues with its durable siliconized seal. For use on patios, driveways, pool decks, brick and retaining walls.

FEATURES & BENEFITS:

- Excellent water and weather resistant properties for protection of your investment and to keep your pavers looking beautiful
- Solvent-based formula to enhance the color in your pavers
- Durable enough to withstand vehicular traffic
- Gloss finish for an aesthetically pleasing appearance

RECOMMENDED USES:

- Patios and walkways
- Lanais
- Driveways
- Pool decks
- Brick and concrete walls
- Retaining walls

COVERAGE & DRYING TIME:

Coverage:
Standard
brick paver: 100-150 sq. ft./gallon

High humidity and/or low temperatures will affect drying time.

Drying time:
Touch: 1 hour
Light foot traffic/recoat: 4 hours
Foot traffic: 24 hours
Heavy traffic: 48 hours

PRODUCT INFORMATION:

Description	SKU#	UPC#	SMIS	Pack
1 Gallon — Gloss	50.149054-16	035777328200	650923063	4
5 Gallon — Gloss	50.149055-20	035777328255	650923071	1
5 Gallon Florida — Gloss	50.150054-20	035777328286	650923089	1



H&C® HYDRO-DEFEND® WATER-BASED CONCRETE & MASONRY WATERPROOFING SEALER is a premium-quality water-based sealer that penetrates and protects aged, dry, porous surfaces. Because it penetrates, it resists water damage long after the water beading is gone. The durable, no sheen, acrylic formula can be used for both interior and exterior applications. This product is milky white when applied to ensure complete coverage, but dries to a clear, transparent coating.

FEATURES & BENEFITS:

- Interior and exterior use
- Protects against water damage
- Long wearing; easy to walk on
- Guards against repeated freeze-thaw cycles and damage from de-icing salts
- One coat is sufficient in most cases, but a second coat may be applied in 2-4 hours

RECOMMENDED USES:

- Concrete
- Stucco
- Concrete block
- Stone brick
- Patios
- Walkways
- Pool decks

COVERAGE & DRYING TIME:

* Coverage:	sq. ft./gal	Drying time:	
Concrete floors	200-300	Touch:	15 minutes
Porous concrete	150-200	Recoat:	2-4 hours
Concrete block	50-75	Light foot traffic:	2 hours
Fluted block	75-100	Heavy traffic:	72 hours
Brick (clay)	100-150		
Precast concrete	125-175		

* Coverage will vary depending on the porosity and texture of the substrate.

PRODUCT INFORMATION:

Description	SKU#	UPC#	SMIS	Pack
1 Gallon	50.143054-16	035777242438	650712334	2
5 Gallon	50.143055-20	035777242421	650712342	1



H&C® HYDRO-DEFEND® CONCRETE & DRIVEWAY PROTECTOR provides a long lasting, breathable barrier that resists dirt, salt, and other contaminants to minimize damage from freeze/thaw, spalling, and water. It's a clear, water-based, siloxane water repellent designed to protect bare concrete, driveways and masonry surfaces.

FEATURES & BENEFITS:

- Water-based formulation
- Protects against damaging freeze/thaw cycles
- Reduces intrusion of water, de-icing salts and other contaminants
- Penetrates deeply for long-lasting protection
- Will not alter the color appearance or texture of the treated surface
- User-friendly, soap and water cleanup

RECOMMENDED USES:

- Concrete
- Stucco
- Concrete block
- Stone
- Brick
- Patios
- Walkways
- Pool decks

COVERAGE & DRYING TIME:

Coverage:	sq. ft./gal	Drying time:	
Concrete floors	150-200	Touch:	1 hour
Porous concrete	100-150	Light foot traffic:	2 hours
Split-faced block	50-75	Heavy foot traffic:	72-96 hours
Fluted block	75-100		
Brick (clay)	100-150		
Precast concrete	125-175		

PRODUCT INFORMATION:

Description	SKU#	UPC#	SMIS	Pack
1 Gallon	50.144154-16	035777242445	650712359	4
5 Gallon	50.144155-20	035777242452	650712367	1

PRO PRODUCT CATEGORIES

POLISHING PRODUCTS
27

DECORATIVE STAINS & DYES
28 - 31

COMMERCIAL CLEAR SEALERS
32 - 35

METALLIC FLOORING SYSTEM
36 - 37

CONCRETE RESURFACERS
38 - 43

COLOR PACKS
44 - 45

COLOR HARDENERS & RELEASE
46 - 47

COMMERCIAL WATER REPELLENTS
48 - 49



PRO
SERIES

CONCRETE PRODUCTS FOR THE PROFESSIONAL



H&C™ ENDURAPOLISH™ CLEAR LIQUID HARDENER & DENSIFIER is an amorphous colloidal silica solution designed to both harden and densify concrete. This proprietary formulation penetrates and reacts with concrete faster than conventional systems and produces a harder, more uniform surface. H&C ENDURAPOLISH CLEAR enhances stained or dyed concrete and is ideal for polished concrete applications. Additionally, it is commonly used as a dust proofer.

FEATURES & BENEFITS

- Densifies and hardens new and existing concrete
- Penetrates and reacts with concrete quickly
- Produces a more uniform surface
- Resists blushing and yellowing
- Increases life expectancy of concrete
- Easy to apply and maintain
- Easy to polish – minimizes labor costs
- Used as a dust-proofing agent on bare porous concrete

RECOMMENDED USES:

- Warehouses
- Retail outlets
- Distribution centers
- Show rooms
- Airports
- Commercial floors

COVERAGE & DRYING TIME:

Coverage: Concrete ground to 100-200 grit typically requires an application rate of approximately 400-500 sq. ft. per gallon.

Drying time:
Recoat: 30-60 mins (Must be dry to touch)
Light pedestrian traffic: 30-60 mins
Fork lift and vehicle traffic: 2 hours

Maximum performance may take up to 14 days to develop, depending on temperature and humidity.

PRODUCT INFORMATION:

Description	SKU#	UPC#	SMIS	Pack
1 Gallon – Clear Liquid Hardener & Densifier	55.130034-16	035777330463	650924236	4
5 Gallon – Clear Liquid Hardener & Densifier	55.130035-20	035777330494	650924244	1



H&C™ ENDURAPOLISH™ HI GLOSS LITHIUM PROTECTIVE FINISH is a lithium-fortified, high-gloss finish designed to penetrate and protect polished concrete surfaces by increasing the hardness, improving stain resistance, and providing superior reflectivity when burnished. H&C ENDURAPOLISH HI GLOSS chemically bonds to concrete and will never peel, flake or fade. It is recommended to high speed burnish this product.

FEATURES & BENEFITS

- Protects polished concrete
- Increases concrete hardness
- Improves stain resistance
- Provides a highly reflective, streak-free surface
- Easy to apply and maintain
- Minimizes labor costs
- Must be burnished. Minimum 1500 RPM

RECOMMENDED USES:

- Warehouses
- Retail outlets
- Distribution centers
- Show rooms
- Airports
- Commercial floors

COVERAGE & DRYING TIME:

Coverage: 2000-3000 sq. ft. per gallon high reflectivity 1500 + grit profiles (2500 sq. ft. first application / 3000 sq. ft. second application).

Drying time:
To touch: 6 hours
Light pedestrian traffic: 30-60 mins
Fork lift and vehicle traffic: 2 hours

PRODUCT INFORMATION:

Description	SKU#	UPC#	SMIS	Pack
1 Gallon - Lithium Protective Finish	55.130044-16	035777330524	650924251	4
5 Gallon - Lithium Protective Finish	55.130045-20	035777330531	650924269	1



H&C[®] INFUSION[®] ACETONE DYE STAINS achieve a layered, faux or single color look in a lot less time than acid stains. When not being utilized in a grinding and polishing type of application, etching is required prior to application to open pores of the concrete. When layering stain, apply lighter colors first. After all dye stain has been applied, use water to remove residue. As a final step, water-based or solvent-based sealers must be applied as topcoats when Acetone Dye is used in non-polishing applications.

FEATURES & BENEFITS

- Can be used along with integral and color hardeners
- Dry to touch in 20-40 minutes
- No neutralizing required
- Compact – very little shelf space
- Ideal for polished concrete or existing interior substrates
- The colors can be intermixed to create additional colors

RECOMMENDED USES:

- Retail stores and malls
- Interior floors
- Garage floors

PRODUCT INFORMATION:

Description	SKU#	UPC#	SMIS #	Pack	Description	SKU#	UPC#	SMIS #	Pack
Spanish Dagger	41.105001-99	035777329115	650923717	4	Ranch Hand Brown	41.105009-99	035777329344	650923816	4
Reno Gold	41.105002-99	035777329139	650923733	4	Cowboy Hat	41.105010-99	035777329474	650923907	4
Saddle Brown	41.105003-99	035777329146	650923741	4	Vegas Light	41.105011-99	035777329382	650923832	4
Prickly Cactus	41.105004-99	035777329160	650923758	4	Red Rock	41.105012-99	035777329399	650923840	4
Salsa Red	41.105005-99	035777329467	650923899	4	Adobe Red	41.105013-99	035777329405	650923857	4
Oasis	41.105006-99	035777329191	650923774	4	Stagecoach Brown	41.105014-99	035777329436	650923865	4
Canyon	41.105007-99	035777329214	650923782	4	Desert Orange	41.105015-99	035777329443	650923873	4
Tortoise Shell	41.105008-99	035777329238	650923808	4	Rattler's Brown	41.105016-99	035777329450	650923881	4

COVERAGE & DRYING TIME:

* Coverage: 300-400 sq./ft. per gal.

* Coverage will vary depending on the porosity of the substrate.

Drying time:

Touch: 30 minute

AVAILABLE COLORS

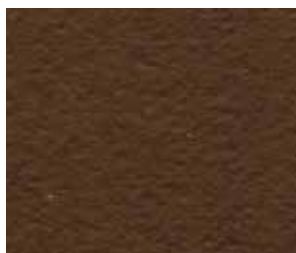
Additional colors can be achieved by mixing the colors below. These colors are a representation. Actual color will vary due to the concrete finishing method (how smooth or porous the surface is), producing a mottling or distressed appearance.



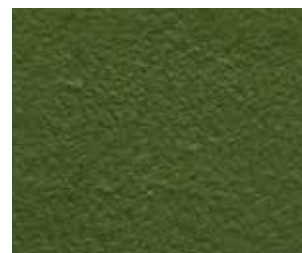
Spanish Dagger



Reno Gold



Saddle Brown



Prickly Cactus



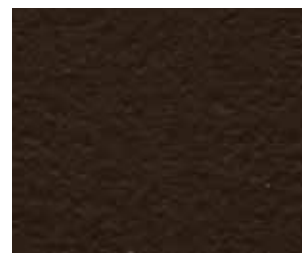
Salsa Red



Oasis



Canyon



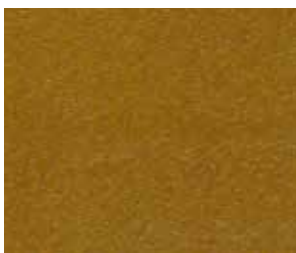
Tortoise Shell



Ranch Hand Brown



Cowboy Hat



Vegas Light



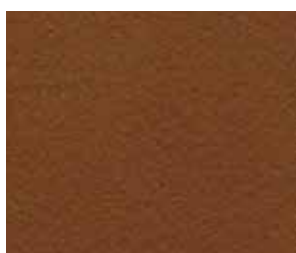
Red Rock



Adobe Red



Stagecoach Brown



Desert Orange



Rattler's Brown



H&C[®] INFUSION[®] REACTIVE CONCRETE STAINS are the artistic way of giving a translucent, variegated appearance to bare, horizontal new or existing concrete. Acid staining takes blank canvas of bare concrete and gives it an artistic flare. Acid stains accentuate any imperfections in the concrete like small cracks, or contaminants. With H&C INFUSION Reactive, no two projects will ever be the same! As a final step, water-based or solvent-based sealers must be applied as topcoats when using H&C INFUSION Reactive. Additionally, H&C INFUSION Industrial Floor Finish can be used to complete the look and protect the floor.



FEATURES & BENEFITS

- Gives new and existing concrete a new translucent, variegated appearance
- Long lasting performance at a lower cost than other floor installations
- Multiple colored effects can be created
- Excellent for use in commercial, residential, institutional and industrial areas
- Solvent-based, water-based sealers and floor finish complete and protect the floor look

RECOMMENDED USES:

- Bare concrete indoor or outside a home
- Pool decks
- Patios and walkways
- Driveways
- Stores and malls
- Restaurants
- Office buildings

PRODUCT INFORMATION:

Description	SKU#	UPC#	SMIS	Pack	Description	SKU#	UPC#	SMIS	Pack	Description	SKU#	UPC#	SMIS	Pack
1 Gallon — Wenge Wood	40.102004-16	035777329498	650923915	4	1 Gallon — Potterswheel	40.102044-16	035777329603	650923998	4	1 Gallon — Sienna Red	40.102084-16	035777329900	650924079	4
5 Gallon — Wenge Wood	40.102005-20	035777329504	650923923	1	5 Gallon — Potterswheel	40.102045-20	035777329610	650924004	1	5 Gallon — Sienna Red	40.102085-20	035777329917	650924087	1
1 Gallon — Rusted Fence	40.102014-16	035777329511	650923931	4	1 Gallon — Lido Blue	40.102054-16	035777329627	650924012	4	1 Gallon — Mustard Seed	40.102094-16	035777329924	650924095	4
5 Gallon — Rusted Fence	40.102015-20	035777329528	650923949	1	5 Gallon — Lido Blue	40.102055-20	035777329719	650924020	1	5 Gallon — Mustard Seed	40.102095-20	035777329948	650924103	1
1 Gallon — Black Coffee	40.102024-16	035777329542	650923956	4	1 Gallon — Potato Ivy	40.102064-16	035777329764	650924038	4	1 Gallon — Midas Gold	40.102104-16	035777329955	650924111	4
5 Gallon — Black Coffee	40.102025-20	035777329573	650923964	1	5 Gallon — Potato Ivy	40.102065-20	035777329863	650924046	1	5 Gallon — Midas Gold	40.102105-20	035777329979	650924129	1
1 Gallon — Crumbled Brick	40.102034-16	035777329580	650923972	4	1 Gallon — Verdant Plain	40.102074-16	035777329870	650924053	4	1 Gallon — Shore Gray	40.102114-16	035777329986	650924137	4
5 Gallon — Crumbled Brick	40.102035-20	035777329597	650923980	1	5 Gallon — Verdant Plain	40.102075-20	035777329894	650924061	1	5 Gallon — Shore Gray	40.102115-20	035777330319	650924178	1

COVERAGE & DRYING TIME:

* Coverage: 150-200 sq./ft. per gal.

* Coverage will vary depending on the porosity and texture of the substrate

Drying time: @ 77°F 50% RH:

Temperature and humidity dependent

Recoat/sealing:

4 hours

24 hours after residue removal

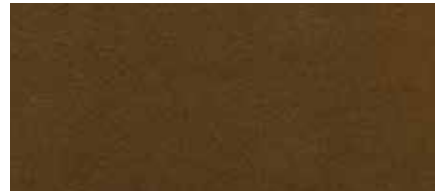
Neutralization is only required once

AVAILABLE COLORS

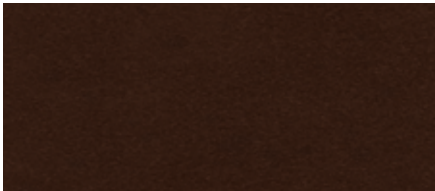
Additional colors can be achieved by intermixing the colors. These colors are a representation. Actual color will vary due to the concrete finishing method (how smooth or porous the surface is), producing a mottling or distressed appearance.



HC 400 Wenge Wood



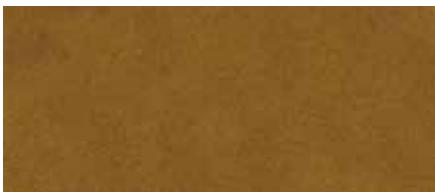
HC 401 Rusted Fence



HC 402 Black Coffee



HC 403 Crumbled Brick



HC 404 Potter's Wheel



HC 405 Lido Blue (Interior Only)



HC 406 Potato Ivy (Interior Only)



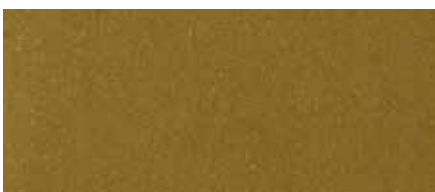
HC 407 Verdant Plain (Interior Only)



HC 408 Sienna Red



HC 409 Mustard Seed



HC 410 Midas Gold



HC 411 Shore Gray

Always do a test area first. Lido Blue, Potato Ivy and Verdant Plain are for interior use only. Read all instructions and technical sheets prior to using H&C[®] INFUSION[®] REACTIVE CONCRETE STAINS AND SEALERS. These products are for professional use only.



H&C® INFUSION® SOLVENT-BASED CLEAR DECORATIVE CONCRETE SEALER is a high solids sealer designed to add deep penetrating protection and long-lasting beauty to exterior concrete such as driveways, patios, walkways and garage floors. H&C Decorative Concrete Sealer is the perfect sealer for exterior decorative concrete projects, and is ideal for use with H&C Decorative Stains.

FEATURES & BENEFITS

- Ideal for decorative concrete applications
- High solids acrylic formulation
- Enhances color depth
- Durable, high gloss non-yellowing finish
- Inhibits hot tire pick-up
- Easy application with excellent flow and leveling

RECOMMENDED USES:

- Patios and walkways
- Concrete driveways
- Pool decks
- Garage floors

COVERAGE & DRYING TIME:

* Coverage:	sq ft/gal	Drying time, @ 77°F 50% RH:
Concrete floors	200-250	temperature and humidity dependent
Porous concrete	150-200	
Concrete block	125-150	Touch: 15 minutes
Brick (clay)	100-150	Light foot traffic: 1 hour
		Light traffic/recoat: 12 hours
* Coverage will vary depending on the porosity and texture of the substrate.		Heavy traffic: 72-96 hours

PRODUCT INFORMATION:

Description	SKU#	UPC#	SMIS	Pack
1 Gallon — Clear Gloss Finish	50.100004-16	035777327944	650922891	4
5 Gallon — Clear Gloss Finish	50.100005-20	035777327982	650922917	1



H&C® INFUSION® SOLVENT AND WATER-BASED SEALERS are designed to be used over the H&C INFUSION REACTIVE STAINS. Both aid in the protection of the surface as well as developing the color's brilliance.

H&C INFUSION INDUSTRIAL FLOOR FINISH is a tough and flexible metal cross-linked acrylic, formulated to dry to a brilliant gloss. This product is ideal for indoor high-traffic areas.

FEATURES & BENEFITS

- Long-lasting beauty and protection
- Solvent and water-based formulations
- Ideal for high-traffic areas
- High-gloss finish
- Use Industrial Floor Finish for added protection on interior floors

RECOMMENDED USES:

- Schools
- Office buildings
- Malls
- Retail stores
- Airports
- Factories
- Hospitals
- Hotels
- Restaurants

COVERAGE & DRYING TIME:

* Coverage:	sq ft/gal	Drying time, @ 77°F 50% RH:
First coat	350-400	temperature and humidity dependent
Second coat	400	
* Coverage will vary depending on the porosity and texture of the concrete.		Touch: 20 minutes
		Foot traffic: 12 hours
		Recoat: 4 hours
		Heavy traffic: 24 hours

PRODUCT INFORMATION:

Description	SKU#	UPC#	SMIS	Pack
1 Gallon — Solvent-Based Sealer	40.101014-16	035777330357	650924194	4
5 Gallon — Solvent-Based Sealer	40.101015-20	035777330432	650924210	1
1 Gallon — Water-Based Sealer	40.101004-16	035777317594	650909625	4
5 Gallon — Water-Based Sealer	40.101005-20	035777317600	650909633	1
1 Gallon — Industrial Floor Finish	40.101024-16	035777330333	650924186	4
5 Gallon — Industrial Floor Finish	40.101025-20	035777330388	650924202	1



Give green/fresh concrete the treatment it needs to survive and stay looking fresh with H&C™ CLEARPROTECT™ SOLVENT-BASED CURE AND SEAL. It's a solvent-based curing compound and sealer, formulated to help the hydration of newly placed concrete and provide long-lasting protection.

FEATURES & BENEFITS

- Cures green concrete to proper strength and reduces drying, shrinkage, and cracking
- Penetrating sealer that extends the life of concrete and masonry surfaces
- Complies with USDA requirements for food safety.
- Can be built to a high-gloss finish with multiple coats that dust proof concrete
- Resists damage from water, UV rays, pool chemicals, most cleaning agents and heavy traffic
- Product can be applied 2 hours after concrete is set

RECOMMENDED USES:

- Interior and exterior green concrete surfaces
- Use as a protective sealer on existing bare concrete driveways, walkways, patios and pool decks
- OTC Compliant with a non-yellowing formulation

COVERAGE & DRYING TIME:

Coverage:	sq ft/gal	Drying time, @ 77°F 50% RH:
Porous concrete	150-250	temperature and humidity dependent
New concrete	200-300	Touch: 30 minutes
		Light foot traffic: Overnight
		Recoat: 4 hours
		Heavy traffic: 72 hours

PRODUCT INFORMATION:

Description	SKU#	UPC#	SMIS	Pack
1 Gallon — Clear	50.155014-16	035777317648	650909674	4
5 Gallon — Clear	50.155015-20	035777317655	650909682	1



H&C™ CLEARPROTECT™ HIGH PERFORMANCE INDUSTRIAL CLEAR COAT with its durable high-gloss finish, will enhance and protect previously coated, and bare concrete, as well as other masonry surfaces. It is a solvent-based sealer used for interior and exterior applications.

FEATURES & BENEFITS

- Impact and abrasion resistant
- Chemical resistant
- Resists yellowing
- Fast cure
- Outstanding application properties

RECOMMENDED USES:

- Schools
- Warehouses
- Retail outlets
- Airport hangers
- Garage floors

COVERAGE & DRYING TIME:

* Coverage:	sq ft/gal	Drying time, @ 77°F 50% RH:
Smooth-troweled concrete floors	330-500	temperature and humidity dependent
Previously stained surfaces	200-300	Touch: 2 hours
		Recoat: 9 hours min
		14 days max
* Coverage will vary depending on porosity and texture of substrate.		Heavy/vehicle traffic: 72-96 hours
		Full Cure: 3-6 days

PRODUCT INFORMATION:

Description	SKU#	UPC#	SMIS	Pack
1 Gallon — High Performance Clear Coat	50.170154-16	035777317624	650909658	4
5 Gallon — High Performance Clear Coat	50.170155-20	035777317631	650909666	1



Available in GLOSS or SATIN Sheen

H&C™ CLEARPROTECT™ WATER-BASED 2-PART POLYURETHANE CLEAR COAT is a two-component, 60%-solids, breathable aliphatic urethane designed for use over concrete overlays and concrete and masonry substrates. H&C CLEARPROTECT WATER-BASED 2-PART POLYURETHANE is available in two finishes, Gloss and Satin.

NOTE: This is a catalyzed 3(19) : 1(B) product. H&C CLEARPROTECT 2-Part Polyurethane Clear Coat Part A (Clear) and Part B (Hardener) must be mixed prior to use.

FEATURES & BENEFITS

- Available in a gloss or satin finish
- Meets the strictest VOC regulations making it suitable for use in all states
- Breathable coating to minimize moisture entrapment and degradation of the coating
- Good chemical resistance to maintain performance of the coating
- Can be used in USDA-inspected facilities
- Excellent wear and adhesion properties
- Safe application for occupied buildings
- In 2-coat systems, apply a second coat while the first is tacky*

RECOMMENDED USES:

- Retail settings
- Museums
- Hotels
- Schools
- Offices
- Warehouses

COVERAGE & DRYING TIME:

* Coverage: 250-400 sq ft/gal
6-4 wet mils

* Coverage will vary depending on porosity and texture of substrate.

Drying time, @ 72°F, 50% RH at 10 mils (250 microns):

Touch: 6-12 hours
Recoat: 8-24 hours
Light foot traffic: 24 hours
Heavy traffic: 72 hours
Full cure: 7 days



PRODUCT INFORMATION:

MIX FOR 1 WORKING / CATALYZED GALLON

Description	SKU#	UPC#	SMIS #	Pack
1 Gallon – 2-Part Polyurethane Gloss A	50.11755A-16	035777467671	650964711	4
1 Quart – 2-Part Polyurethane Gloss B	50.11755B-14	035777467701	650964737	6
1 Gallon – 2-Part Polyurethane Satin A	50.11745A-16	035777467817	650964752	4
1 Quart – 2-Part Polyurethane Satin B	50.11745B-14	035777467824	650964760	6

MIX FOR 5 WORKING / CATALYZED GALLONS

Description	SKU#	UPC#	SMIS #	Pack
2 Gallon – 2-Part Polyurethane Gloss B	50.11755B-36	035777467633	650964687	2
5 Gallon – 2-Part Polyurethane Satin A	50.11745A-19	035777467640	650964695	1
2 Gallon – 2-Part Polyurethane Satin B	50.11745B-36	035777467657	650964703	2

FULL FILL 1 GALLON

Description	SKU#	UPC#	SMIS #	Pack
1 Gallon – 2-Part Polyurethane Gloss B	50.11735B-16	035777328347	650923113	4
1 Gallon – 2-Part Polyurethane Satin B	50.11725B-16	035777328637	650923147	4

FULL FILL 5 GALLONS

Description	SKU#	UPC#	SMIS #	Pack
5 Gallon – 2-Part Polyurethane Gloss A	50.11735A-20	035777328323	650923097	1
5 Gallon – 2-Part Polyurethane Gloss B	50.11735B-20	035777328330	650923105	1
5 Gallon – 2-Part Polyurethane Satin A	50.11725A-20	035777328460	650923121	1
5 Gallon – 2-Part Polyurethane Satin B	50.11725B-20	035777328590	650923139	1
5 Gallon – 2-Part Polyurethane Gloss A	50.11755A-19	35777467626	650964679	1

*Spiked shoes are acceptable.

CLEARPROTECT™ 2-PART SELF-LEVELING EPOXY CLEAR COAT



H&C™ CLEARPROTECT™ 2-PART SELF-LEVELING EPOXY CLEAR COAT is a 100% solids, two-component, self-leveling clear epoxy. It was formulated to create a durable, low-maintenance flooring surface, and can be used over H&C® concrete color treatments, such as INFUSION® ACETONE DYE, REACTIVE STAIN AND SEMI-TRANSPARENT STAIN. H&C CLEARPROTECT 2-PART SELF-LEVELING EPOXY is for interior use only.

NOTE: This is a catalyzed Z(A) : Z(B) product. H&C CLEARPROTECT 2-Part Self-Leveling Epoxy Clear Coat Part A (Clear) and Part B (Hardener) must be mixed prior to use.

FEATURES & BENEFITS

- Impact and abrasion resistant making it ideal for commercial applications
- Chemical resistant for added protection
- Complies with USDA requirements for food safety
- Durable and hard-wearing for a low-maintenance system
- Available in a high gloss for an aesthetically pleasing finish
- Excellent adhesion properties for long-lasting protection
- Self-leveling properties for ease of application
- Meets the strictest VOC regulations making it suitable for use in all states

RECOMMENDED USES:

- Retail settings
- Hotels
- Office spaces
- Museums
- Schools
- Warehouses
- Showrooms
- Commercial kitchens

COVERAGE & DRYING TIME:

* Coverage: 130-200 sq ft/gal
12-8 wet mils
60-70 sq ft/gal for Metallic Projects

* Coverage will vary depending on porosity and texture of substrate.

Drying time, @ 72°F, 50% RH:

Touch: 6-12 hours
Light foot traffic: 24 hours
Heavy traffic: 72 hours
Recoat: 8-24 hours
Full cure: 7 days



PRODUCT INFORMATION:

MIX FOR 1 WORKING / CATALYZED GALLON

Description	SKU#	UPC#	SMIS #	Pack
1 Gallon — 2-Part Self-Leveling Epoxy Clear Coat A	50.17065A-16	035777467893	650964794	4
1 Gallon — 2-Part Self-Leveling Epoxy Clear Coat B	50.17065B-16	035777467916	650964802	4

MIX FOR 5 WORKING / CATALYZED GALLONS

Description	SKU#	UPC#	SMIS #	Pack
5 Gallon — 2-Part Self-Leveling Epoxy Clear Coat A	50.17055A-30	035777467862	650964778	1
2 Gallon — 2-Part Self-Leveling Epoxy Clear Coat B	50.17055B-36	035777467886	650964786	2

FULL FILL 5 GALLONS

Description	SKU#	UPC#	SMIS #	Pack
5 Gallon — 2-Part Self Leveling Epoxy Gloss Part A	50.17045A-20	035777328781	650923170	1
5 Gallon — 2-Part Self Leveling Epoxy Part B	50.17045B-20	035777328798	650923188	1

METALLIC FLOORING SYSTEM



H&C® PRO SERIES METALLIC SYSTEM features a durable basecoat, dynamic metallic coat and vibrant color options for a complete metallic flooring system. Leverage the H&C technology to enhance your creative and artistic skills to produce metallic floors that are a work of art. In addition, our self-leveling epoxy system provides durability, chemical resistance, and a high-gloss finish for maximum performance.

FEATURES & BENEFITS

- Vibrant metallic pigments in a variety of colors
- Complete system and sizes for all project needs
- Durable high-gloss finish for showroom results
- Chemical and impact resistant for maximum protection
- Self-leveling properties to achieve an even finish

RECOMMENDED USES:

- Concrete floors
- Garage floors
- Basements
- Interior use only

For additional topcoat options use H&C® Pro Series ClearProtect 2 Part PolyUrethane Satin or Gloss or H&C® Pro Series ClearProtect 2 Part Self-leveling Epoxy Clear Glaze.

EPOXY BASECOATS:

MIX FOR 1 WORKING / CATALYZED GALLON

Description	SKU#	UPC#	SMIS #	Pack
1 Quart — Pro Series Epoxy Basecoat Part A Epoxy	50.17075A-14	035777856970	650999048	4
1 Gallon — Pro Series Epoxy Basecoat Gray Part B Hardener	50.17125B-16	035777857090	650999089	4
1 Gallon — Pro Series Epoxy Basecoat Black Part B Hardener	50.17105B-16	035777857052	650999063	4

MIX FOR 4 WORKING / CATALYZED GALLONS

Description	SKU#	UPC#	SMIS #	Pack
1 Gallon — Pro Series Epoxy Basecoat Part A Epoxy	50.17085A-16	035777856994	650999055	1
4 Gallon — Pro Series Epoxy Basecoat Gray Part B Hardener	50.17135B-30	035777857106	650999097	1
4 Gallon — Pro Series Epoxy Basecoat Black Part B Hardener	50.17115B-30	035777857076	650999071	1



EPOXIES:

FULL FILL 5 GALLONS

Description	SKU#	UPC#	SMIS #	Pack
5 Gallon — ClearProtect 2-Part Self-Leveling Epoxy Clear Coat Part A	50.17045A-20	035777328781	650923170	1
5 Gallon — ClearProtect 2-Part Self-Leveling Epoxy Clear Coat Part B	50.17045B-20	035777328798	650923188	1

FULL FILL 1 GALLON

Description	SKU#	UPC#	SMIS #	Pack
1 Gallon — ClearProtect 2-Part Self-Leveling Epoxy Clear Coat Part A	50.17065A-16	035777467893	650964794	4
1 Gallon — ClearProtect 2-Part Self-Leveling Epoxy Clear Coat Part B	50.17065B-16	035777467916	650964802	4

MIX FOR 5 WORKING / CATALYZED GALLONS

Description	SKU#	UPC#	SMIS #	Pack
4 Gallon — ClearProtect 2-Part Self-Leveling Epoxy Clear Coat Part A	50.17055A-30	035777467862	650964778	1
2 Gallon — ClearProtect 2-Part Self-Leveling Epoxy Clear Coat Part B	50.17055B-36	035777467886	650964786	2
2 Gallon — ClearProtect 2-Part Self-Leveling Epoxy Clear Coat Part B - Fast Set	50.17035B-36	035777857113	650999105	2

METALLIC FLOORING SYSTEM COLOR PALETTE



Silver



Crystal



Diamond



Gem



Orange Beryl



Slate Onyx



Smoke Topaz



Rose Gold



Jasper



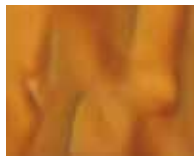
Sapphire



Ruby



Black Diamond



Champagne



Smokey Onyx



Fossil



Smoky Quartz**



Blue Topaz**



Aquamarine**



Orange Sapphire**



Amethyst**



Topaz**



Peridot



Garnet**



Chocolate Diamond**



Copper**



Siam**



Fire Opal**



Gold**



Tiger's Eye



Amber**

METALLIC PIGMENTS:

Description	SKU#	UPC#	SMIS	Pack	Description	SKU#	UPC#	SMIS	Pack	Description	SKU#	UPC#	SMIS	Pack
Silver	20.104301-41	035777854242	650995624	2	Ruby	20.104311-41	035777854426	650995749	2	Topaz**	20.104321-41	035777854556	650995848	2
Crystal	20.104302-41	035777854303	650995657	2	Black Diamond	20.104312-41	035777854433	650995756	2	Peridot	20.104322-41	035777854563	650995855	2
Diamond	20.104303-41	035777854310	650995665	2	Champagne	20.104313-41	035777854440	650995764	2	Garnet**	20.104323-41	035777854570	650995863	2
Gem	20.104304-41	035777854327	650995673	2	Smokey Onyx	20.104314-41	035777854457	650995772	2	Chocolate Diamond**	20.104324-41	035777854587	650995871	2
Orange Beryl	20.104305-41	035777854334	650995681	2	Fossil	20.104315-41	035777854464	650995780	2	Copper**	20.104325-41	035777854594	650995889	2
Slate Onyx	20.104306-41	035777854358	650995699	2	Smokey Quartz**	20.104316-41	035777854471	650995798	2	Siam**	20.104326-41	035777854600	650995897	2
Smoke Topaz	20.104307-41	035777854365	650995707	2	Blue Topaz**	20.104317-41	035777854488	650995806	2	Fire Opal**	20.104327-41	035777854617	650995905	2
Rose Gold	20.104308-41	035777854372	650995715	2	Aquamarine**	20.104318-41	035777854501	650995814	2	Gold**	20.104328-41	035777854624	650995913	2
Jasper	20.104309-41	035777854396	650995723	2	Orange Sapphire**	20.104319-41	035777854525	650995822	2	Tiger's Eye	20.104329-41	035777854631	650995921	2
Sapphire	20.104310-41	035777854419	650995731	2	Amethyst**	20.104320-41	035777854549	650995830	2	Amber**	20.104330-41	035777854648	650995939	2

** Special Order Only



H&C™ DURA-TOP™ SINGLE COMPONENT INSTANT & HEAVY TEXTURE CONCRETE RESURFACERS have excellent adhesion and are cooler than regular concrete. They resist mildew and are skid resistant. The heavy-traffic resurfacer is freeze/thaw resistant. This low-maintenance, abrasion-resistant polymer allows for multiple overcoat options, like any of H&C's stains or sealers. Apply with a hopper gun for a knockdown appearance, or pour on and trowel down for a smooth finish.

INSTANT RESURFACER FEATURES & BENEFITS:

- Create a decorative cementitious texture to existing concrete surfaces
- Interior and exterior use
- Stainable with H&C® COLORTOP™ Concrete Sealer Solvent-Based or H&C COLORTOP Concrete Stain Water-Based
- 50 lb. bag covers up to 150 sq. ft.

HEAVY TRAFFIC FEATURES & BENEFITS:

- Suitable for vehicular traffic
- Durable attractive finish that enhances all landscapes
- Interior and exterior use
- Low maintenance
- 50 lb. bag covers up to 150 sq. ft.



COVERAGE & DRYING TIME:

Coverage:

One 50 lb. (22.7 kg) bag will cover up to 150 sq. ft. (13.9 sq m2) in a splatter or knockdown finish. Coverage depends upon texture finish desired.

Texture will require a minimum of 4hrs before topcoating. If temperatures are below 70°F (21°C) the textured surface will require a minimum of 24 hours drying before application of any topcoat.

RECOMMENDED USES:

- Patios and walkways
- Garage floors
- Lanais
- Driveways
- Pool decks

PRODUCT INFORMATION:

Description	SKU#	UPC#	SMIS #	Pack	Description	SKU#	UPC#	SMIS #	Pack
50 lb. Bag — Instant Texture	60.100209-50	035777324325	650920705	1	50 lb. Bag — Heavy Texture	60.100109-50	035777324332	650920713	1

DURA-TOP™ DUAL-COMPONENT TEXTURE CONCRETE RESURFACER & TEXTURE RESIN AND BOND COAT



H&C™ DURA-TOP™ DUAL-COMPONENT TEXTURE CONCRETE RESURFACER along with TEXTURE RESIN AND BOND COAT are a durable, skid-resistant, 2-component system designed for plain or unsightly concrete surfaces. Designed to withstand freeze/thaw cycles.

FEATURES & BENEFITS

- Create a decorative cementitious texture to existing concrete surfaces
- Interior and exterior use
- Stainable with H&C® COLORTOP™, H&C® ACRYLA-DECK® or H&C® HEAVY SHIELD™ products
- 50 lb. bag covers up to 150 sq. ft.
- H&C DURA-TOP TEXTURE RESIN & BOND COAT is a concentrate. A 5 gallon pail of product can be mixed with up to 10 gallons of water

RECOMMENDED USES:

- Ideal for driving and walking surfaces
- Low maintenance, abrasion resistant
- Excellent adhesion
- 50 lb. bag covers up to 150 sq. ft.

PRODUCT INFORMATION:

Description	SKU#	UPC#	SMIS #	Pack	Description	SKU#	UPC#	SMIS #	Pack
50 lb. Bag – Dual Component Texture	60.100409-50	035777324356	650920747	1	5 Gallon Pail – Texture Resin	60.100309-20	035777388136	650937030	1



COVERAGE & DRYING TIME:

Coverage:
One 50 lb bag

100-150 sq. ft.

Drying time:

Allow the H&C DURA-TOP Concrete Resurfacer Dual Component Texture to dry 24 hours before application of any concrete sealer, stain/sealer or coating.



H&C™ DURA-TOP™ STAMPABLE OVERLAY is used to resurface driveways, patios, pool areas, malls, theme parks, parking lots, interiors and exteriors. It helps turn your ordinary concrete into beautiful works of art. To finish the project, a film-forming coating is recommended for protection.

H&C DURA-TOP LIQUID RELEASE is a blend of evaporating, residue-free release agents for use in the imprinting process to allow the clean release of texturing tools from concrete or overlay surfaces.

FEATURES & BENEFITS

- Stampable cementitious topping for interior or exterior surfaces
- Use with H&C's color packs
- Suitable for any climate, freeze/thaw cycles, and traffic bearing surfaces
- Use with H&C's new DURA-TOP Liquid Release product for a beautiful, unique look
- One 50 lb. bag covers approximately 20 sq. ft. at 1/4 inch
- Fiber reinforced

RECOMMENDED USES:

- Driveways
- Retail settings
- Pool decks and patios
- Parking decks
- Sidewalks
- Garage floors

PRODUCT INFORMATION:

Description	SKU#	UPC#	SMIS	Pack
50 lb. Bag – Stampable Overlay	60.100509-50	35777324998	650921422	1
5 Gallon Pail – Liquid Release	60.100809-20	035777325001	650921430	1



COVERAGE & DRYING TIME:

Coverage:

One 50 lb. bag of Stampable Overlay covers:
15 sq. ft. @ 3/8"
20 sq. ft. @ 1/4"
Exceeding 3/8" can lead to cracking

Drying time, @ 77°F 50% RH:

This drying time should range from thirty (30) minutes to two (2) hours depending on thickness and weather conditions. Indoors, shaded areas or areas without air circulation, and material placed in cold temperatures may take significantly longer to set.



H&C™ DURA-TOP™ BROOM FINISH REPAIR is perfect for salt damaged driveways and sidewalks. It's a cementitious non-slip surface that goes on very thin and has the typical broomed concrete look. It can be used with any H&C Color Pack to provide additional color options.

FEATURES & BENEFITS

- Trowel- and squeegee-applied topping for interior or exterior surfaces
- Ability to slope and fill spalls and low areas
- High impact, abrasion resistant and aids in slip resistance
- Finish coat is ready to be sealed to protect against staining
- Add H&C's DURA-TOP Color Packs for additional color*

*Broom Finish Repair uses a gray portland cement so final color will vary from the color chart

RECOMMENDED USES:

- Driveways
- Parking decks
- Pool decks
- Patios and walkways
- Sidewalks

PRODUCT INFORMATION:

Description	SKU#	UPC#	SMIS	Pack
50 lb. Bag - Broom Finish Repair	60.100609-50	035777325797	650922065	1



COVERAGE & DRYING TIME:

*** Coverage:**

One 50 lb. bag of H&C DURA-TOP Concrete Resurfacer Broom Finish Repair covers: 180-200 sq. ft. @ 1/16" - 1/32" 2 coats recommended

* Coverage will vary depending on the porosity and texture of the concrete.

As product dries, scrape and use leaf blower to remove loose material.

To complete the installation, two thin coats of H&C® CLARISHIELD® or H&C® COLOR-TOP™.

Solvent or Waterborne Sealer are required.



H&C™ DURA-TOP™ MICRO-TOPPING CONCRETE RESURFACER is a polymer-modified, thin, cementitious topping ideal for interior applications. The single-component formulation requires only the addition of water, making it easy to use.

FEATURES & BENEFITS

- Can be applied in a single coat application, saving time and money
- Used in conjunction with H&C stains to achieve a variety of unique colors and finishes
- Durable and cost-effective solution to replacing old, worn concrete
- Finely blended aggregate for a smooth, aesthetically pleasing finish
- Self bonding, single component, just add water
- Freeze/thaw resistant

RECOMMENDED USES:

- Hotels/foyers
- Office floors
- Museums
- Malls
- Concrete floor restoration projects

COVERAGE & DRYING TIME:

*** Coverage:**

One 50 lb. bag of H&C DURA-TOP Concrete Resurfacer Micro-Topping Texture will cover 180-200 sq./coat- approx. 1/16"-1/32". Do not exceed 1/8" per placement. Two coats may be required on rough or pitted surfaces.

* Coverage will vary depending on the porosity and texture of the concrete.

Drying time, @ 77°F 50% RH:

temperature and humidity dependent

- Initial set:** 8 hours
- Staining:** 12 hours
- Recoat:** 8 hours
- Foot traffic:** 24 hours
- Heavy traffic:** 72 hours

PRODUCT INFORMATION:

Description	SKU#	UPC#	SMIS	Pack
50 Lb. Bag - Micro-Topping Texture	60.100909-50	035777325322	650922040	1



H&C™ DURA-TOP™ FLORIDECK CONCRETE RESURFACER resists skid marks, mildew and abrasion. This product is ideal for vehicular traffic.

FEATURES & BENEFITS

- Premium polymer for use in single component cementitious texture products
- Ideal for driving and walking surfaces
- Excellent adhesion promoter
- Low maintenance, abrasion resistant

RECOMMENDED USES:

- Patios
- Walkways
- Pool decks
- Lanais
- Driveways
- Garage floors

COVERAGE & DRYING TIME:

*** Coverage:**

One 50 lb. bag of H&C™ DURA-TOP™ Concrete Resurfacer Florideck Texture will cover 180-200 sq. /coat- approx. 1/16"- 1/32". Do not exceed 1/8" per placement. 2-coats may be required on rough or pitted surfaces.

* Coverage will vary depending on the porosity and texture of the concrete.

Texture will require a minimum of 4 hrs before topcoating. If temperatures are below 70 °F (21C) the textured surface will require a minimum of 24 hours drying before application of any topcoat. A sufficiently dried texture system will not leave a thumbnail impression in the surface.

PRODUCT INFORMATION:

Description	SKU#	UPC#	SMIS	Pack
50 lb. Bag - Florideck Texture	60.100119-50	035777325759	650922057	1



H&C™ DURA-TOP™ FINE CONCRETE RESURFACER resists skid marks, mildew and abrasion. This product is ideal for vehicular traffic.

FEATURES & BENEFITS

- Fine texture for smooth lower profile
- Slower setup time for hot and humid climates
- Can be used in conjunction with H&C® stains to achieve a variety of unique colors and finishes
- Durable and cost-effective solution to replacing old, worn concrete
- Accepts H&C DURA-TOP Color Packs

RECOMMENDED USES:

- Patios
- Walkways
- Pool decks
- Lanais
- Driveways

PRODUCT INFORMATION:

Description	SKU#	UPC#	SMIS	Pack
50 lb. Bag - Fine Texture	60.101109-50	035777526453	650975576	1



COVERAGE & DRYING TIME:

* Coverage:

One 50 lb. bag of H&C DURA-TOP Concrete Resurfacer Fine Texture will cover 180-200 sq./coat- approx. 1/16" - 1/32". Do not exceed 1/8" per placement. Two coats may be required on rough or pitted surfaces.

* Coverage will vary depending on the porosity and texture of the concrete.

Texture will require a minimum of 4hrs before topcoating. If temperatures are below 70°F (21°C) the textured surface will require a minimum of 24 hours drying before application of any topcoat. A sufficiently dried texture system will not leave a thumbnail impression in the surface.



Get creative with H&C™ DURA-TOP™ CONCRETE RESURFACERS COLOR PACKS. Choose from 30 one-pound, pre-measured and vibrant color packs to add color to any H&C Concrete Resurfacer or Overlay. Our color packs allow you to achieve instant color and effects without the need to add stain. It's that easy.

FEATURES & BENEFITS

- Instant color – no need to add stain
- Available in 30 one-pound, pre-measured color packs
- Clear sealer over textures will enhance the color even more
- Easy to use with our H&C system; we recommend one color pack per 50 lb. bag



PRODUCT INFORMATION:

Description	SKU#	UPC#	SMIS #	Pack	Description	SKU#	UPC#	SMIS #	Pack
Birch Bark	60.100001-99	035777324370	650920762	12	Blank Canvas	60.100016-99	035777324554	650920945	12
Bamboo	60.100002-99	035777324387	650920770	12	Alabaster	60.100017-99	035777324561	650920952	12
Dried Sage	60.100003-99	035777324394	650920788	12	Cemented Deal	60.100018-99	035777324578	650920960	12
Thistle	60.100004-99	035777324400	650920796	12	Siberian Haze	60.100019-99	035777324585	650920978	12
Gullie Blue	60.100005-99	035777324417	650920804	12	Natural Cork	60.100020-99	035777324592	650920986	12
Hot Mauve	60.100006-99	035777324424	650920812	12	Buckhead Brown	60.100021-99	035777324608	650920994	12
Copper Penny	60.100007-99	035777324431	650920820	12	Maple	60.100022-99	035777324615	650921000	12
Canyon Clay	60.100008-99	035777324448	650920838	12	Bold Bark	60.100023-99	035777324622	650921018	12
Paprika	60.100009-99	035777324455	650920846	12	Black Walnut	60.100024-99	035777324639	650921026	12
Brickwork Red	60.100010-99	035777324462	650920853	12	Coffee Bean	60.100025-99	035777324646	650921034	12
Cotton Ball	60.100011-99	035777324493	650920887	12	Brushed Steel	60.100026-99	035777324653	650921042	12
Tweed	60.100012-99	035777324509	650920895	12	Gadget Gray	60.100027-99	035777324660	650921059	12
Sandstone	60.100013-99	035777324516	650920903	12	City Sidewalk	60.100028-99	035777324677	650921067	12
Soapstone	60.100014-99	035777324523	650920911	12	Solitude	60.100029-99	035777324684	650921075	12
Fawn	60.100015-99	035777324530	650920929	12	Pepper Black	60.100030-99	035777324707	650921091	12

AVAILABLE COLORS

These colors are a representation. Actual color will vary due to the concrete finishing method (how smooth or porous the surface is), producing a mottling or distressed appearance.



Birch Bark



Bamboo



Dried Sage



Thistle



Gullie Blue



Hot Mauve



Copper Penny



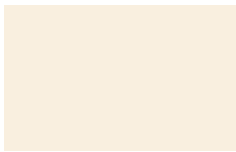
Canyon Clay



Paprika



Brickwork Red



Cotton Ball



Tweed



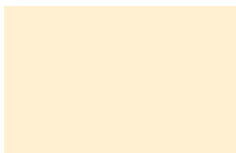
Sandstone



Soapstone



Fawn



Blank Canvas



Alabaster



Cemented Deal



Siberian Haze



Natural Cork



Buckhead Brown



Maple



Bold Bark



Black Walnut



Coffee Bean



Brushed Steel



Gadget Gray



City Sidewalk



Solitude



Pepper Black



H&C™ DURA-TOP™ COLOR HARDENER & RELEASE is perfect for coloring and hardening new stamped concrete applications. H&C DURA-TOP COLOR HARDENER improves the strength and density of the concrete while adding rich, intense color options. H&C DURA-TOP COLOR RELEASE is designed to work with stamping tools to enhance the texture and provide an accent color in any hardscape.

FEATURES & BENEFITS

- Colors and hardens freshly placed concrete
- Improves abrasion resistance
- Produces a brilliant streak-free surface
- DURA-TOP Color Hardener & Release are both available in 10 packaged colors
- Using H&C DURA-TOP Color Hardener increases the compressive strength of the concrete (to over 6,000 PSI)

RECOMMENDED USES:

- Driveways
- Garage floors
- Patios
- Lanais
- Walkways
- Pool decks
- Commercial floors



COVERAGE & DRYING TIME: DURA-TOP COLOR HARDENER

Coverage: Coverage requirements may vary according to intended use and color. Minimum Coverage: 60 Lb. of H&C DURA-TOP COLOR HARDENER will cover up to 100 sq. ft. Lighter colors and commercial applications may require heavier applications of H&C DURA-TOP COLOR HARDENER.

COVERAGE & DRYING TIME: DURA-TOP COLOR RELEASE

Coverage: Coverage requirements may vary according to intended use, application method and color. Minimum Coverage: 30 Lb. of H&C DURA-TOP COLOR RELEASE will generally cover up to 1000 sq. ft. Lighter colors and commercial applications may require heavier applications of H&C DURA-TOP COLOR HARDENER.

PRODUCT INFORMATION: DURA-TOP COLOR HARDENER

Description	SKU#	UPC#	SMIS #	Pack
Copper Penny	61.100007	035777325032	650921547	1
Twweed	61.100012	035777325049	650921554	1
Sandstone	61.100013	035777325056	650921562	1
Fawn	61.100015	035777325063	650921570	1
Alabaster	61.100017	035777325087	650921596	1
Cemented Deal	61.100018	035777325094	650921604	1
Siberian Haze	61.100019	035777325162	650921752	1
Natural Cork	61.100020	035777325179	650921778	1
Maple	61.100022	035777325186	650921794	1
Brushed Steel	61.100026	035777325193	650921810	1

PRODUCT INFORMATION: DURA-TOP COLOR RELEASE

Description	SKU#	UPC#	SMIS #	Pack
Copper Penny	62.100007	035777325223	650921943	1
Sandstone	62.100013	035777325230	650921950	1
Fawn	62.100015	035777325254	650921976	1
Siberian Haze	62.100019	035777325261	650921984	1
Maple	62.100022	035777325278	650921992	1
Bold Bark	62.100023	035777325285	650922008	1
Black Walnut	62.100024	035777325292	650922016	1
Coffee Bean	62.100025	035777325247	650921968	1
Solitude	62.100029	035777325308	650922024	1
Pepper Black	62.100030	035777325315	650922032	1

AVAILABLE COLORS

H&C™ DURA-TOP™ COLOR HARDENER is a blend of select graded aggregates, architectural cements, plasticizers and synthetic oxide pigment. When properly applied, H&C DURA-TOP COLOR HARDENER will improve abrasion resistance and produce a brilliant, streak-free surface.

H&C DURA-TOP COLOR RELEASE is used with H&C DURA-TOP COLOR HARDENER for stamping newly or freshly placed concrete. It releases stamping tools from concrete and provides a secondary accent color with its proprietary integrated pigments.

DURA-TOP COLOR HARDENER



Copper Penny



Tweed



Sandstone*



Fawn*



Alabaster*



Cemented Deal



Siberian Haze



Natural Cork



Maple*



Brushed Steel*

DURA-TOP COLOR RELEASE



Copper Penny



Sandstone*



Fawn*



Siberian Haze*



Maple*



Bold Bark



Black Walnut



Coffee Bean



Pepper Black



Solitude*

* Special order only



**NO FILM
Finish**

H&C® HYDRO-DEFEND® SILANE SL-40 WATER REPELLENT is a high-performance water repellent that penetrates into the substrate and provides long-term weatherproofing protection. It's a single component product that is ready to use and typically requires only one application. SL-40 will not darken the surface or leave a visible surface film. SL-40 penetrates deep into the surface to chemically react with and bond to it.

H&C HYDRO-DEFEND SILOXANE SX-7 WATER REPELLENT is designed to weatherproof old and new concrete and masonry surfaces against nature's destructive forces. It provides a long-lasting breathable barrier that resists cracking, airborne dust and dirt, salt, efflorescence and spalling. SX-7 is a 7% siloxane that penetrates deep into the surface to chemically react with and bond to it.

HYDRO-DEFEND SL-40 FEATURES & BENEFITS:

- Can be reopened to foot traffic within one hour
- Will not change the traction of skid-resistant horizontal surfaces
- Prevents damage from ice and deicing salts and chloride ions

HYDRO-DEFEND SX-7 FEATURES & BENEFITS:

- Safe application to occupied buildings
- Lasting protection on vertical and horizontal surfaces
- Alkaline resistant

RECOMMENDED USES:

- Must be applied to bare surfaces
- Traffic sound barriers
- Driveways
- Cast in place concrete
- Precast concrete
- Exposed aggregate
- Brick and mortar
- Stucco and sandstone
- Architectural concrete block



COVERAGE & DRYING TIME:

* Coverage:	sq ft/gal		
Smooth precast concrete	125 - 175	Fluted block	50 - 75
Cast-in-place	100 - 150	Brick (Clay)	100 - 150
Precast concrete	125 - 150	Stucco	100 - 150
Exposed aggregate	100 - 150	Sandstone	75 - 125
** Split face block (CMU)	50 - 75	Steel trowelled concrete	150 - 200

* Coverage will vary depending on the porosity and texture of the substrate.

** Lightweight split faced block may require a film-forming product due to its extreme porosity.

Drying time, @ 72°F, 50% RH:

Touch:	1 hour	Light foot traffic:	2 hours
Recoat:	24 hours	Heavy traffic:	72 hours

PRODUCT INFORMATION:

Description	SKU#	UPC#	SMIS	Pack
5 Gallon - SL-40 Silane Water Repellent - Clear	50.145055-20	035777328088	650922958	1
5 Gallon - SX-7 Siloxane Water Repellent - Clear	50.144055-20	035777328095	650922966	1



H&C® HYDRO-DEFEND® SUPER V™ WATER REPELLENT is a self-emulsifying, siloxane concentrate that when mixed with water and agitated, forms a micro-emulsion suitable for application to above grade, dense or porous masonry surfaces. This can be applied to dry and even slightly damp surfaces.

H&C HYDRO-DEFEND SILOXANE HB-100 AND SILOXANE HB-150 WATER REPELLENTS are designed to weatherproof old and new concrete and masonry surfaces against nature's destructive forces. They provide a long lasting breathable barrier that resists cracking, airborne dust and dirt, salt, efflorescence and spalling.

HYDRO-DEFEND SUPER V FEATURES & BENEFITS:

- 1 - 1/2 gallon concentrate mixed with 1 1/2 gallons of water yields 10% siloxane
- Passes Federal Spec. SS-W-110C Water Repelling Test
- Designed to maximize penetration
- Water cleanup

RECOMMENDED USES:

- Concrete walls
- Precast concrete
- Poured concrete
- Brick

HYDRO-DEFEND HB-100 & HB-150 FEATURES & BENEFITS:

- A mineral spirits based water repellent
- Invisible no film finish
- Can be stained over
- HB-100 is a 10% siloxane
- HB-150 is a 15% siloxane

- Highways
- Bridge decks
- Cement floors
- Roof tile

PRODUCT INFORMATION:

Description	SKU#	UPC#	SMIS	Pack
1/2 Gallon Kit - Super V Water Repellent Concentrate - Clear	50.145001-15	035777328095	650922966	1
5 Gallon - HB-100 Water Repellent - Clear	50.140105-20	035777328035	650922925	1
5 Gallon - HB-150 Water Repellent - Clear	50.140155-20	035777328071	650922933	1

COVERAGE & DRYING TIME:

* Coverage:	sq ft/gal		
Porous concrete	150-200	Roof tiles	25-50
**Split face block	200-300	Bridge decks	100-150
Fluted block	25-50	Steel trowled concrete	150-200
Concrete block	75-125	Precast concrete	125-175
Brick (clay)	100-150		

* Coverage will vary depending on the porosity and texture of the substrate.

**Lightweight split faced block may require a film-forming product due to its extreme porosity.

Drying time, @ 72°F, 50% RH:

Touch:	3 hours	Light foot traffic:	24 hours
Recoat:	24 hours	Heavy traffic:	24 hours



PRO
SERIES

CONCRETE PRODUCTS FOR THE PROFESSIONAL

DECORATIVE STAINS COMPARISON GUIDE

SURFACE	INFUSION® SEMI-TRANSPARENT WATER-BASED STAIN	INFUSION® DYE STAIN	INFUSION® REACTIVE STAIN
	WATER-BASED	SOLVENT-BASED MIX	ACID-BASED
CONCRETE DRIVEWAYS	Excellent	Not Recommended*	Excellent
ASPHALT DRIVEWAYS	Not Recommended	Not Recommended	Not Recommended
PATIOS & WALKWAYS	Excellent	Not Recommended*	Excellent
GARAGE FLOORS***	Good	Very Good	Excellent
INTERIOR COMMERCIAL FLOORS	Excellent	Excellent**	Excellent
CONCRETE OR STUCCO WALLS	Excellent	Not Recommended	Excellent
BASEMENTS	Excellent	Excellent	Excellent
LAUNDRY ROOMS	Excellent	Excellent	Excellent
SWIMMING POOL DECKS	Excellent	Not Recommended	Excellent
ATHLETIC COURTS	Very Good	Not Recommended	Good

*Acetone dye stain is only for interior use. It WILL fade on exterior surfaces or in direct sunlight-exposed applications.

**Acetone dye stain achieves the best results with a grinding and polishing system when the surface is hardened and densified.

***High performance topcoats that resist hot-tire pickup should be used in this application.

CLEAR'S COMPARISON GUIDE

GENERAL SEALERS

PAVER SEALERS



WATER BASED

SOLVENT BASED

WATER-BASED

	WATER BASED		SOLVENT BASED			WATER-BASED		
PRODUCT	ClariShield® Water-Based Wet-Look Concrete Sealer	ColorTop™ WB Solid Color Clear Sealer	ClariShield® Oil-Based Concrete Sealer	ColorTop™ Solvent-Based Solid Color Concrete Sealer	ClariShield® Solvent-Based Gloss Concrete Sealer 250 VOC	UltraPaver® Water-Based Paver Sealer - Natural	UltraPaver® Water-Based Paver Sealer - Gloss	
KEY FEATURES	Solvent-free, high solids, low VOC	Low-lustre finish	Non-yellowing, UV resistant	Silicone acrylic formula. Inhibits hot-tire pick-up.	VOC >250 g/L. Non-yellowing, UV & chemical resistant	Bonds joint sand, prevents weed growth. Solvent-free, natural finish	Bonds joint sand, prevents weed growth. Solvent-free, glossy finish	
IDEAL FOR	Patios & walkways, pool decks, athletic courts, driveways	Pool decks, patios, athletic courts, stadiums, bridges, CMU block	Driveways, patios, walkways & pool decks	Patios & walkways, pool decks, driveways, garage floors & bare concrete	Patios & walkways, pool decks, driveways, garage floors & bare concrete	Bare concrete, masonry and brick paver stones on patios & walkways	Bare concrete, masonry and brick paver stones on patios & walkways	
INT/EXT	Interior/Exterior	Interior/Exterior	Exterior	Interior* / Exterior	Interior* / Exterior	Exterior	Exterior	
APPLICATION	Brush/roll - 1/4"-3/8" synthetic roller	Brush/roll - 1/4"-3/8" synthetic roller	Brush/roll/spray 3/8" synthetic roller or pump spray	Brush/roll - 1/4"-3/8" synthetic roller or pump spray	Brush/roll - 1/4"-3/8" synthetic roller or pump spray	Brush/roll - 1/4"-3/8" synthetic roller or pump spray	Brush/roll - 1/4"-3/8" synthetic roller or pump spray	
RECOAT TIME	2-Hrs	2-Hrs	4-Hrs	12-Hrs	12-Hrs	2-Hrs	2-Hrs	
CLEAN UP	Soap & Water	Soap & Water	D-100 Solvent/Xylene	D-100 Solvent/Xylene	D-100 Solvent/Xylene	Soap & Water	Soap & Water	
PLANOGRAM/ NON-PLANO	P	N	P	N	N	P	P	

* If using for interior, please ensure proper ventilation and extinguish all open flames.

PAVER SEALERS



SOLVENT BASED

COMMERCIAL SEALERS



WATER-BASED

SOLVENT BASED

DECORATIVE TOP COATS



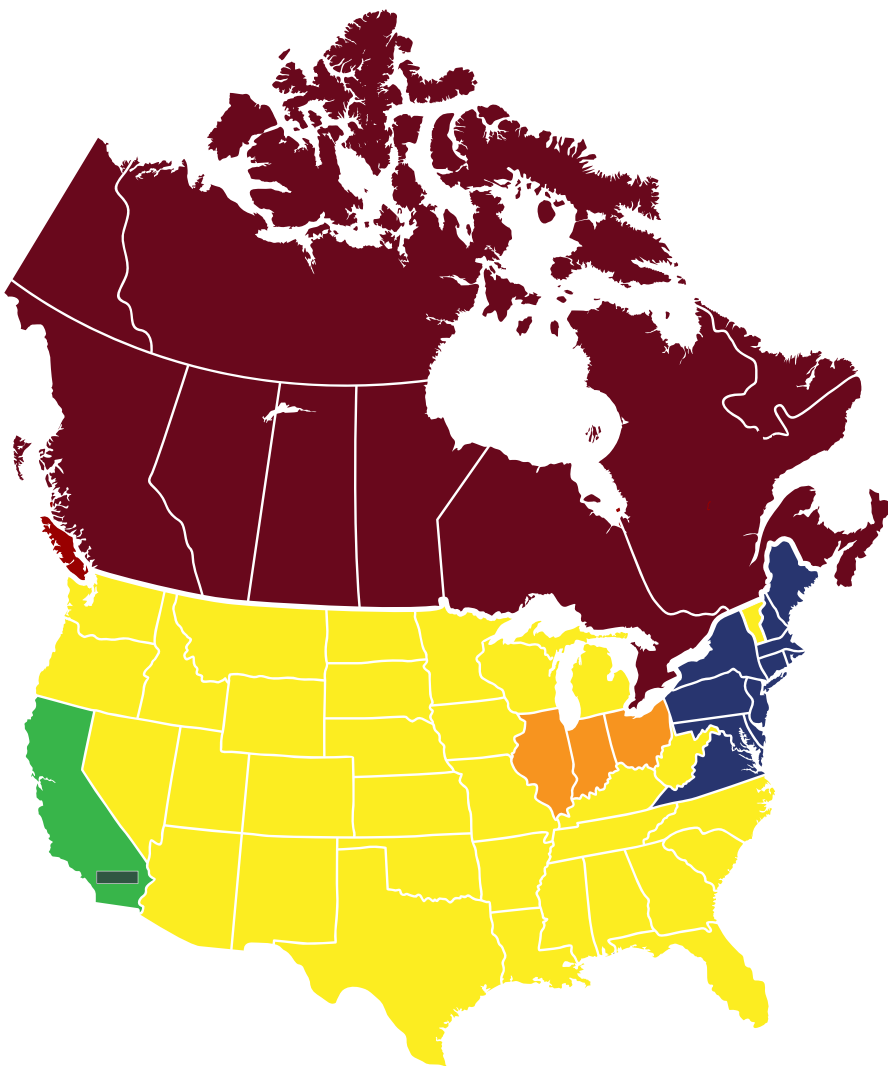
WATER-BASED

SOLVENT-BASED

PAVER SEALERS		COMMERCIAL SEALERS			DECORATIVE TOP COATS		
SOLVENT BASED		WATER-BASED		SOLVENT BASED	WATER-BASED		SOLVENT-BASED
UltraPaver® Solvent-Based Paver Sealer - Gloss	UltraPaver® Solvent-Based Paver Sealer	ClearProtect™ Water-Based 2-Part Polyurethane Epoxy Clear Coat	ClearProtect™ Water-Based 2-Part Self Leveling Epoxy Clear Coat	ClearProtect™ High Performance Industrial Clear Coat	Infusion® Water-based Clear	Infusion® Industrial Floor Finish	Infusion® Solvent-based Clear
Weathering & water damage protection. Enhances color of pavers.	Penetrating, waterproofing sealer. Chemical resistant.	Water-Based. 60% solids breathable aliphatic urethane. Meets USDA food safety requirements.	100% solids, hi-gloss abrasion/chemical resistant. Meets USDA food safety requirements	High-solids, single-component, aliphatic, moisture-cure urethane.	Acrylic emulsion formula. High gloss finish, solvent free, low odor	Provides added protection and long lasting beauty. Enhances color brilliance of stained concrete.	Modified thermoplastic acrylic resins, high gloss finish, enriches the color of stained concrete.
Bare concrete, masonry and brick paver stones on patios, walkways & driveways	Bare concrete, pavers, stepping stones and chattahoochee surfaces	Commercial, industrial & residential concrete floors. Topcoat over epoxy, overlay or any decorative stains	Commercial, industrial & residential concrete floors. Metallic Epoxy Floors & commercial kitchens	Bare concrete or over any H&C decorative stains (S/T, Acid or Acetone Dye) Topcoat over epoxy	Topcoat over any Infusion decorative stain	Topcoat over any Infusion decorative stain	Topcoat over any Infusion decorative stain
Exterior	Exterior	Interior/ Exterior	Interior	Interior	Interior*	Interior*	Interior*
Brush/roll - 1/4"-3/8" synthetic roller or pump spray	Brush/roll - 1/4"-3/8" synthetic roller or pump spray	Synthetic brush, 1/4"-3/8" solvent-resistant roller, spike shoes	Synthetic brush, 1/4"-3/8" solvent-resistant roller, magic trowel, spike shoes	Brush/roll - 1/4"-3/8" synthetic roller	Brush/roll - 1/4"-3/8" synthetic roller	Rayon mop or 1/4" lambskin cover	Brush/roll - 1/4"-3/8" synthetic roller
4-Hrs	4-Hrs	2-4 hrs	8-24 hrs	9 hrs Min 14 days Max	4-hrs	1-2 hrs	4-hrs
D-100 Solvent/ Xylene	D-100 Solvent/ Xylene	Soap & Water	Toluene, D-100 Solvent or Xylene	R2K5 or R7K65	Soap & Water	Soap & Water	D-100 Solvent or Xylene
N	N	N	N	N	N	N	N

H&C[®] PRODUCTS VOC COMPLIANCE

The chart to the right shows, by product line, the VOC compliance (as of January 1, 2016). For additional assistance, please contact H&C[®] Technical Support via the phone at 1-800-TO-STAIN (867-8246) or by web at www.HC-Concrete.com.



VOC REGULATED LOCATIONS

-  SCAQMD - South Coast Air Quality Management District; www.aqmd.gov
-  CARB - California Air Resources Board www.arb.ca.gov
-  OTC - Ozone Transport Commission www.otcair.org
-  LADCO - Lake Michigan Air Directors Consortium; www.ladco.org
-  EPA - Environmental Protection Agency; www.epa.gov
-  Canada; www.ec.gc.ca

PRODUCTS	SCAQMD	CARB	OTC	LADCO	CANADA
ACRYLA-DECK® WATER-BASED HI BUILD DECK COATING WITH COOL FEEL™ TECHNOLOGY	N	Y	Y	Y	Y
ACRYLA-DECK® WATER-BASED SOLID COLOR DECK COATING	N	Y	Y	Y	Y
CLARISHIELD® OIL-BASED CLEAR SEALER	N	N	N	Y	N
CLARISHIELD® SOLVENT-BASED 250 CLEAR SEALER	N	Y	Y	Y	Y
CLARISHIELD® WATER-BASED CLEAR SEALER WET LOOK	Y	Y	Y	Y	Y
CLEARPROTECT™ 2-PART URETHANE GLOSS A	Y	Y	Y	Y	Y
CLEARPROTECT™ HIGH PERFORMANCE INDUSTRIAL CLEAR COAT	N	N	Y	Y	Y
CLEARPROTECT™ SOLVENT-BASED CURE AND SEAL	N	N	Y	Y	Y
CLEARPROTECT™ WATER-BASED 2-PART SELF LEVELING EPOXY	Y	Y	Y	Y	Y
COLORTOP™ SOLVENT-BASED 250 SEALER	N	Y	Y	Y	Y
COLORTOP™ SOLVENT-BASED SEALER	N	N	N	Y	N
COLORTOP™ WATER-BASED 50 STAIN	Y	Y	Y	Y	Y
COLORTOP™ WATER-BASED STAIN	Y	Y	Y	Y	Y
CONCRETEREADY® Prep Products	Y	Y	Y	Y	Y
DURA-TOP™ BROOM FINISH REPAIR	Y	Y	Y	Y	Y
DURA-TOP™ COLOR HARDENER & RELEASE	Y	Y	Y	Y	Y
DURA-TOP™ COLOR PACK	Y	Y	Y	Y	Y
DURA-TOP™ Concrete Resurfacer Fine Texture	Y	Y	Y	Y	Y
DURA-TOP™ DUAL COMPONENT TEXTURE	Y	Y	Y	Y	Y
DURA-TOP™ FLORIDECK TEXTURE	Y	Y	Y	Y	Y
DURA-TOP™ LIQUID RELEASE	Y	Y	Y	Y	Y
DURA-TOP™ MICRO-TOPPING	Y	Y	Y	Y	Y
DURA-TOP™ RESURFACER HEAVY TEXTURE	Y	Y	Y	Y	Y
DURA-TOP™ RESURFACER INSTANT TEXTURE	Y	Y	Y	Y	Y
DURA-TOP™ STAMPABLE OVERLAY	Y	Y	Y	Y	Y
DURA-TOP™ TEXTURE RESIN	Y	Y	Y	Y	Y
ENDURAPOLISH™ CLEAR LIQUID HARDENER & DENSIFIER	Y	Y	Y	Y	Y
ENDURAPOLISH™ HI GLOSS LITHIUM FINISH	Y	Y	Y	Y	Y
HYDRO-DEFEND® CONCRETE & DRIVEWAY PROTECTOR	Y	Y	Y	Y	Y
HYDRO-DEFEND® CONCRETE WATERPROOFING SEALER	Y	Y	Y	Y	Y
HYDRO-DEFEND® HB-100 WATER REPELLENT	N	N	N	Y	N
HYDRO-DEFEND® HB-150 WATER REPELLENT	N	N	N	Y	N
HYDRO-DEFEND® SILANE SL-40 WATER REPELLENT	N	N	N	Y	N
HYDRO-DEFEND® SILOXANE SX-7 WATER REPELLENT	Y	Y	Y	Y	Y
HYDRO-DEFEND® SUPER V REPELLENT	N	N	N	Y	N
INFUSION® DYE STAIN	Y	Y	Y	Y	Y
INFUSION® INDUSTRIAL FLOOR FINISH	Y	Y	Y	Y	Y
INFUSION® REACTIVE STAIN	Y	Y	Y	Y	Y
INFUSION® SEMI-TRANSPARENT WATER-BASED STAIN	Y	Y	Y	Y	Y
INFUSION® SOLVENT-BASED CLEAR DECORATIVE CONCRETE SEALER	N	N	N	Y	N
INFUSION® SOLVENT-BASED SEALER	Y	Y	Y	Y	Y
INFUSION® WATER-BASED SEALER	Y	Y	Y	Y	Y
SHARKGRIP™ SLIP-RESISTANT ADDITIVE	Y	Y	Y	Y	Y
SHIELD-CRETE® DECO-FLAKES	Y	Y	Y	Y	Y
SHIELD-CRETE® EPOXY WATER-BASED	N	Y	Y	Y	Y
SHIELD-CRETE® EPOXY WATER-BASED CLEAR GLAZE	Y	Y	Y	Y	Y
ULTRAPAVER® SOLVENT-BASED SEALER GLOSS	N	N	N	Y	N
ULTRAPAVER® WATER-BASED CLEAR SEALER NATURAL	N	Y	Y	Y	Y

PRODUCT LIST

Description	SKU#	UPC#	SMIS	Pack	Size	Made to Order	Page
Prep Products & Additives							
ConcreteReady® Etching Solution	50.160004-16	035777230046	650712300	2	1 Gallon		4
ConcreteReady® Solvent-Based Cleaner Degreaser	50.170015-15	035777230053	650712318	4	1/2 Gallon		4
ConcreteReady® Quick Patch & Repair	60.100709-99	035777230060	650712326	4	5 lb./1 Gallon Bucket		5
SharkGrip® Slip-Resistant Additive	50.155004-99	035777230015	650712276	12	3.2 oz.		5
SharkGrip® Slip-Resistant Additive	50.155005-99	035777230022	650712284	6	16 oz.		5
SharkGrip® Slip-Resistant Additive	50.155008-99	035777230039	650712292	1	19 lb.	Y	5
Epoxy Floor Coatings							
Shield-Crete® Epoxy Water-Based — Pewter	20.102100-99	035777229033	650711617	1	1 Kit		8
Shield-Crete® Epoxy Water-Based — Beige	20.102200-99	035777229040	650711625	1	1 Kit		8
Shield-Crete® Epoxy Water-Based — Firebrick Red	20.102300-99	035777229071	650711658	1	1 Kit		8
Shield-Crete® Epoxy Water-Based — Ivory	20.102400-99	035777229088	650711666	1	1 Kit		8
Shield-Crete® Epoxy Water-Based — Nightsky	20.102500-99	035777229095	650711674	1	1 Kit		8
Shield-Crete® Epoxy Water-Based — Part A	21.103104-16	035777467923	650964810	4	1 Gallon		8
Shield-Crete® Epoxy Water-Based — Pewter — Part B	21.103205-20	035777467930	650964828	1	3.3 Gallon		8
Shield-Crete® Epoxy Water-Based — Beige — Part B	21.103305-20	035777472040	650964901	1	3.3 Gallon		8
Shield-Crete® Epoxy Water-Based — Firebrick Red — Part B	21.103405-20	035777472095	650964919	1	3.3 Gallon		8
Shield-Crete® Epoxy Water-Based — Ivory — Part B	21.103505-20	035777472101	650964927	1	3.3 Gallon		8
Shield-Crete® Epoxy Water-Based — Nightsky — Part B	21.103605-20	035777472118	650964935	1	3.3 Gallon		8
Shield-Crete® Epoxy Water-Based — Clear Glaze	20.103000-16	035777229101	650711682	4	1 Gallon		9
Shield-Crete® Epoxy Water-Based — Clear Glaze	20.103005-20	035777472125	650964943	1	5 Gallon		9
Shield-Crete® Deco-Flakes — Pewter	20.104100-14	035777229132	650711716	6	1 Quart		9
Shield-Crete® Deco-Flakes — Beige	20.104200-14	035777229149	650711724	6	1 Quart		9
Shield-Crete® Deco-Flakes — Red	20.104300-14	035777229156	650711732	6	1 Quart		9
Shield-Crete® Solvent-Based Clear Topcoat	20.105308-16	035777856895	650999006	4	1 Gallon		10
Shield-Crete® Solvent-Based Clear Topcoat	20.105309-20	035777856901	650999014	1	5 Gallon		10
Shield-Crete® Low VOC Solvent-Based Clear Topcoat	20.105310-16	035777856918	650999022	4	1 Gallon		10
Shield-Crete® Low VOC Solvent-Based Clear Topcoat	20.105311-20	035777856925	650999030	1	5 Gallon		10
Shield-Crete® XL High Performance Garage Epoxy Part B Hardener	20.105301-15	035777856772	650998891	1	.5 Gallon		11
Shield-Crete® XL High Performance Garage Epoxy Part A Epoxy Gray Taupe	20.105302-16	035777856802	650998909	4	1 Gallon		11
Shield-Crete® XL High Performance Garage Epoxy Part A Epoxy Sand Taupe	20.105303-16	035777856826	650998925	4	1 Gallon		11
Shield-Crete® XL High Performance Garage Epoxy Part B Fast Set Hardener	20.105304-17	035777856833	650998933	2	2 Gallon		11
Shield-Crete® XL High Performance Garage Epoxy Part B Hardener	20.105305-17	035777856840	650998941	2	2 Gallon		11
Shield-Crete® XL High Performance Garage Epoxy Part A Epoxy Haze Gray Taupe	20.105306-20	035777856857	650998966	1	5 Gallon		11
Shield-Crete® XL High Performance Garage Epoxy Part A Epoxy Sand Taupe	20.105307-20	035777856864	650998974	1	5 Gallon		11
Solid Color Stains Water-Based							
ColorTop™ Water-Based Stain - Tint Base — Extra White	20.101214-16	035777228876	650711450	4	1 Gallon		12
ColorTop™ Water-Based Stain - Tint Base — Extra White	20.101215-20	035777228883	650711468	1	5 Gallon		12
ColorTop™ Water-Based Stain - Tint Base — Deep	20.102214-16	035777229057	650711633	4	1 Gallon		12
ColorTop™ Water-Based Stain - Tint Base — Deep	20.102215-20	035777229064	650711641	1	5 Gallon		12
ColorTop™ Water-Based Stain - Tint Base — Ultra Deep	20.103214-16	035777229118	650711690	4	1 Gallon		12
ColorTop™ Water-Based Stain - Tint Base — Ultra Deep	20.103215-20	035777229125	650711708	1	5 Gallon		12
ColorTop™ Water-Based Stain — Clear	20.101204-16	35777328187	650923014	4	1 Gallon		12
ColorTop™ Water-Based Stain — Clear	20.101205-20	35777328194	650923022	1	5 Gallon		12
ColorTop™ Water-Based Stain — Black	20.101224-16	035777228890	650711476	4	1 Gallon		12
ColorTop™ Water-Based Stain — Black	20.101225-20	035777228906	650711484	1	5 Gallon	Y	12

PRODUCT LIST

Description	SKU#	UPC#	SMIS	Pack	Size	Made to Order	Page
Solid Color Stains Water-Based (Continued)							
ColorTop™ Water-Based Stain — Bombay	20.101254-16	035777228913	650711492	4	1 Gallon		12
ColorTop™ Water-Based Stain — Bombay	20.101255-20	035777228920	650711500	1	5 Gallon		12
ColorTop™ Water-Based Stain — Gull Gray	20.101284-16	035777228937	650711518	4	1 Gallon		12
ColorTop™ Water-Based Stain — Gull Gray	20.101285-20	035777228944	650711526	1	5 Gallon	Y	12
ColorTop™ Water-Based Stain — Pearl Gray	20.101314-16	035777228951	650711534	4	1 Gallon		12
ColorTop™ Water-Based Stain — Pearl Gray	20.101315-20	035777228968	650711542	1	5 Gallon	Y	12
ColorTop™ Water-Based Stain — Sandstone	20.101324-16	035777228975	650711559	4	1 Gallon		12
ColorTop™ Water-Based Stain — Silver Gray	20.101344-16	035777228982	650711567	1	1 Gallon	Y	12
ColorTop™ Water-Based Stain — Terracotta	20.101354-16	035777228999	650711575	4	1 Gallon		12
ColorTop™ Water-Based Stain — Terracotta	20.101355-20	035777229002	650711583	1	5 Gallon		12
ColorTop™ Water-Based Stain — Tile Red	20.101364-16	035777229019	650711591	4	1 Gallon		12
ColorTop™ Water-Based Stain — Tile Red	20.101365-20	035777229026	650711609	1	5 Gallon		12
ColorTop™ Water-Based 50 Stain - Tint Base — Extra White	20.104414-16	035777229163	650711740	4	1 Gallon		13
ColorTop™ Water-Based 50 Stain - Tint Base — Extra White	20.104415-20	035777229187	650711757	1	5 Gallon		13
ColorTop™ Water-Based 50 Stain - Tint Base — Deep	20.104514-16	035777229194	650711765	4	1 Gallon		13
ColorTop™ Water-Based 50 Stain - Tint Base — Deep	20.104515-20	035777229200	650711773	1	5 Gallon		13
ColorTop™ Water-Based 50 Stain - Tint Base — Ultra Deep	20.104614-16	035777229217	650711781	4	1 Gallon		13
ColorTop™ Water-Based 50 Stain - Tint Base — Ultra Deep	20.104615-20	035777229231	650711799	1	5 Gallon		13
Solid Color Stains & Sealers Solvent-Based							
ColorTop™ Solvent-Based Sealer - Tint Base — Extra White	10.114014-16	035777228784	650711419	4	1 Gallon		14
ColorTop™ Solvent-Based Sealer - Tint Base — Extra White	10.114015-20	035777228821	650711427	1	5 Gallon		14
ColorTop™ Solvent-Based Sealer - Tint Base — Deep	10.116014-16	035777228838	650711435	4	1 Gallon		14
ColorTop™ Solvent-Based Sealer - Tint Base — Deep	10.116015-20	035777228845	650711443	1	5 Gallon		14
ColorTop™ Solvent-Based Sealer — Clear	10.100004-16	035777328101	650922974	4	1 Gallon		14
ColorTop™ Solvent-Based Sealer — Clear	10.100005-20	035777328118	650922982	1	5 Gallon		14
ColorTop™ Solvent-Based Sealer — Black	10.100024-16	035777230077	650711179	4	1 Gallon	Y	14
ColorTop™ Solvent-Based Sealer — Black	10.100025-20	035777230084	650711187	1	5 Gallon	Y	14
ColorTop™ Solvent-Based Sealer — Autumn Brown	10.100034-16	035777228548	650711195	4	1 Gallon	Y	14
ColorTop™ Solvent-Based Sealer — Autumn Brown	10.100035-20	035777228555	650711203	1	5 Gallon	Y	14
ColorTop™ Solvent-Based Sealer — Bombay	10.100054-16	035777228562	650711211	4	1 Gallon	Y	14
ColorTop™ Solvent-Based Sealer — Bombay	10.100055-20	035777228579	650711229	1	5 Gallon	Y	14
ColorTop™ Solvent-Based Sealer — Brick Red	10.100064-16	035777228586	650711237	4	1 Gallon	Y	14
ColorTop™ Solvent-Based Sealer — Brick Red	10.100065-20	035777228593	650711245	1	5 Gallon	Y	14
ColorTop™ Solvent-Based Sealer — Charcoal	10.100074-16	035777228616	650711252	4	1 Gallon	Y	14
ColorTop™ Solvent-Based Sealer — Charcoal	10.100075-20	035777228623	650711260	1	5 Gallon	Y	14
ColorTop™ Solvent-Based Sealer — Gull Gray	10.100084-16	035777228630	650711278	4	1 Gallon	Y	14
ColorTop™ Solvent-Based Sealer — Gull Gray	10.100085-20	035777228647	650711286	1	5 Gallon	Y	14
ColorTop™ Solvent-Based Sealer — Patio Green	10.100104-16	035777228654	650711294	4	1 Gallon	Y	14
ColorTop™ Solvent-Based Sealer — Patio Green	10.100105-20	035777228661	650711302	1	5 Gallon	Y	14
ColorTop™ Solvent-Based Sealer — Pearl Gray	10.100114-16	035777228678	650711310	4	1 Gallon	Y	14
ColorTop™ Solvent-Based Sealer — Pearl Gray	10.100115-20	035777228685	650711328	1	5 Gallon	Y	14
ColorTop™ Solvent-Based Sealer — Sandstone	10.100124-16	035777228692	650711336	4	1 Gallon	Y	14
ColorTop™ Solvent-Based Sealer — Sandstone	10.100125-20	035777228708	650711344	1	5 Gallon	Y	14
ColorTop™ Solvent-Based Sealer — Silver Gray	10.100144-16	035777228715	650711351	4	1 Gallon	Y	14
ColorTop™ Solvent-Based Sealer — Silver Gray	10.100145-20	035777228722	650711369	1	5 Gallon	Y	14

PRODUCT LIST

Description	SKU#	UPC#	SMIS	Pack	Size	Made to Order	Page
Solid Color Stains & Sealers Solvent-Based (Continued)							
ColorTop™ Solvent-Based Sealer — Terracotta	10.100154-16	035777228739	650711377	4	1 Gallon	Y	14
ColorTop™ Solvent-Based Sealer — Terracotta	10.100155-20	035777228753	650711385	1	5 Gallon	Y	14
ColorTop™ Solvent-Based Sealer — Tile Red	10.100164-16	035777228760	650711393	4	1 Gallon	Y	14
ColorTop™ Solvent-Based Sealer — Tile Red	10.100165-20	035777228777	650711401	1	5 Gallon	Y	14
ColorTop™ Solvent-Based 250 Sealer - Tint Base — Extra White	30.114014-16	035777229439	650711997	4	1 Gallon		15
ColorTop™ Solvent-Based 250 Sealer - Tint Base — Extra White	30.114015-20	035777229446	650712003	1	5 Gallon		15
ColorTop™ Solvent-Based 250 Sealer - Tint Base — Deep	30.116014-16	035777229477	650712011	4	1 Gallon		15
ColorTop™ Solvent-Based 250 Sealer - Tint Base — Deep	30.116015-20	035777229484	650712029	1	5 Gallon		15
ColorTop™ Solvent-Based 250 Sealer — Clear	30.100004-16	035777328132	650922990	4	1 Gallon		15
ColorTop™ Solvent-Based 250 Sealer — Clear	30.100005-20	035777328149	650923006	1	5 Gallon		15
ColorTop™ Solvent-Based 250 Sealer — Bombay	30.101104-16	035777229255	650711815	4	1 Gallon		15
ColorTop™ Solvent-Based 250 Sealer — Bombay	30.101105-20	035777229262	650711823	1	5 Gallon		15
ColorTop™ Solvent-Based 250 Sealer — Sandstone	30.101204-16	035777229279	650711831	4	1 Gallon		15
ColorTop™ Solvent-Based 250 Sealer — Sandstone	30.101205-20	035777229286	650711849	1	5 Gallon		15
ColorTop™ Solvent-Based 250 Sealer — Black	30.101404-16	035777229293	650711856	4	1 Gallon		15
ColorTop™ Solvent-Based 250 Sealer — Black	30.101405-20	035777229309	650711864	1	5 Gallon		15
ColorTop™ Solvent-Based 250 Sealer — Tile Red	30.101504-16	035777229316	650711872	4	1 Gallon		15
ColorTop™ Solvent-Based 250 Sealer — Tile Red	30.101505-20	035777229323	650711880	1	5 Gallon		15
ColorTop™ Solvent-Based 250 Sealer — Terracotta	30.101604-16	035777229330	650711898	4	1 Gallon		15
ColorTop™ Solvent-Based 250 Sealer — Terracotta	30.101605-20	035777229347	650711906	1	5 Gallon		15
ColorTop™ Solvent-Based 250 Sealer — Patio Green	30.101704-16	035777229354	650711914	4	1 Gallon		15
ColorTop™ Solvent-Based 250 Sealer — Patio Green	30.101705-20	035777229361	650711922	1	5 Gallon		15
ColorTop™ Solvent-Based 250 Sealer — Pearl Gray	30.101804-16	035777229378	650711930	4	1 Gallon		15
ColorTop™ Solvent-Based 250 Sealer — Pearl Gray	30.101805-20	035777229385	650711948	1	5 Gallon		15
ColorTop™ Solvent-Based 250 Sealer — Silver Gray	30.101904-16	035777229392	650711955	4	1 Gallon		15
ColorTop™ Solvent-Based 250 Sealer — Silver Gray	30.101905-20	035777229408	650711963	1	5 Gallon		15
Solid Color Deck Coatings Water-Based							
Acryla-Deck® Water-Based Solid Color Deck Coating - Tint Base — Extra White	25.100214-16	035777311936	650902323	4	1 Gallon		16
Acryla-Deck® Water-Based Solid Color Deck Coating - Tint Base — Extra White	25.100215-20	035777311943	650902331	1	5 Gallon		16
Acryla-Deck® Water-Based Solid Color Deck Coating - Tint Base — Deep	25.100314-16	035777311967	650902356	4	1 Gallon		16
Acryla-Deck® Water-Based Solid Color Deck Coating - Tint Base — Deep	25.100315-20	035777318126	650910565	1	5 Gallon		16
Acryla-Deck® Water-Based Solid Color Hi-Build Deck Coating with Cool Feel™ Technology - Tint Base — Extra White	25.101214-16	035777331880	650924814	4	1 Gallon		16
Acryla-Deck® Water-Based Solid Color Hi-Build Deck Coating with Cool Feel™ Technology - Tint Base — Extra White	25.101215-20	035777331903	650924822	1	5 Gallon		16
Acryla-Deck® Water-Based Solid Color Hi-Build Deck Coating with Cool Feel™ Technology - Tint Base — Deep	25.101314-16	035777331927	650924830	4	1 Gallon		16
Acryla-Deck® Water-Based Solid Color Hi-Build Deck Coating with Cool Feel™ Technology - Tint Base — Deep	25.101315-20	035777332009	650924848	1	5 Gallon		16
H&C® Heavy Shield™ Concrete & Driveway Enamel / Stain							
H&C® Heavy Shield™ Concrete & Driveway Enamel / Stain	35.100214	035777848784	650990146	1	1 Gallon		18
H&C® Heavy Shield™ Concrete & Driveway Enamel / Stain	35.100215	035777848814	650990260	1	5 Gallon		18
H&C® Heavy Shield™ Concrete & Driveway Enamel / Stain	35.100314	035777849309	650990757	1	1 Gallon		18
H&C® Heavy Shield™ Concrete & Driveway Enamel / Stain	35.100315	035777849316	650990781	1	5 Gallon		18
H&C® Heavy Shield™ Concrete & Driveway Enamel / Stain	35.100414	035777849330	650990807	1	1 Gallon		18
H&C® Heavy Shield™ Concrete & Driveway Enamel / Stain	35.100415	035777849347	650990815	1	5 Gallon		18
Semi-Transparent Stains							
Infusion® Semi-Transparent Water-Based Stain — Arctic Stone	45.102014-16	035777229491	650712037	2	1 Gallon		20
Infusion® Semi-Transparent Water-Based Stain — Tumbled Stone	45.102024-16	035777229507	650712045	2	1 Gallon		20
Infusion® Semi-Transparent Water-Based Stain — Obsidian	45.102034-16	035777229514	650712052	2	1 Gallon		20
Infusion® Semi-Transparent Water-Based Stain — Espresso	45.102044-16	035777229613	650712060	2	1 Gallon		20

PRODUCT LIST

Description	SKU#	UPC#	SMIS	Pack	Size	Made to Order	Page
Semi-Transparent Stains (Continued)							
Infusion® Semi-Transparent Water-Based Stain — Cocoa Bean	45.102054-16	035777229668	650712078	2	1 Gallon		20
Infusion® Semi-Transparent Water-Based Stain — Gold Leaf	45.102124-16	035777229880	650712144	2	1 Gallon		20
Infusion® Semi-Transparent Water-Based Stain — Cordovan	45.102064-16	035777229699	650712086	2	1 Gallon		20
Infusion® Semi-Transparent Water-Based Stain — Henna	45.102074-16	035777229705	650712094	2	1 Gallon		20
Infusion® Semi-Transparent Water-Based Stain — Dahlia Red	45.102084-16	035777229729	650712102	2	1 Gallon		20
Infusion® Semi-Transparent Water-Based Stain — Cardinal Red	45.102094-16	035777229828	650712110	2	1 Gallon		20
Infusion® Semi-Transparent Water-Based Stain — Pumpkin Spice	45.102104-16	035777229842	650712128	2	1 Gallon		20
Infusion® Semi-Transparent Water-Based Stain — Autumn Breeze	45.102114-16	035777229866	650712136	2	1 Gallon		20
Infusion® Semi-Transparent Water-Based Stain — Cork	45.102134-16	035777229897	650712151	2	1 Gallon		20
Infusion® Semi-Transparent Water-Based Stain — Dewy Blade	45.102144-16	035777229903	650712169	2	1 Gallon		20
Infusion® Semi-Transparent Water-Based Stain — Moss	45.102154-16	035777229910	650712177	2	1 Gallon		20
Infusion® Semi-Transparent Water-Based Stain — Marina Blue	45.102164-16	035777229927	650712185	2	1 Gallon		20
Clear Sealers							
ClariShield® Oil-Based Clear Sealer	50.120234-16	035777229934	650712193	4	1 Gallon		22
ClariShield® Oil-Based Clear Sealer	50.120235-20	035777229941	650712201	1	5 Gallon		22
ClariShield® Water-Based Concrete Sealer Wet Look	50.148154-16	035777229996	650712250	4	1 Gallon		23
ClariShield® Water-Based Concrete Sealer Wet Look	50.148155-20	035777230008	650712268	1	5 Gallon		23
ClariShield® Solvent-Based 250 Clear Sealer	30.102004-16	035777229415	650711971	4	1 Gallon		23
ClariShield® Solvent-Based 250 Clear Sealer	30.102005-20	035777229422	650711989	1	5 Gallon		23
Paver Sealers							
UltraPaver® Water-Based Clear Sealer — Natural	50.146054-16	035777229958	650712219	2	1 Gallon		24
UltraPaver® Water-Based Clear Sealer — Natural	50.146055-20	035777229965	650712227	1	5 Gallon		24
UltraPaver® Water-Based Clear Sealer — Gloss	50.147054-16	035777229972	650712235	2	1 Gallon		24
UltraPaver® Water-Based Clear Sealer — Gloss	50.147055-20	035777229989	650712243	1	5 Gallon		24
UltraPaver® Solvent-Based Clear Sealer — Gloss	50.149054-16	035777328200	650923063	4	1 Gallon		24
UltraPaver® Solvent-Based Clear Sealer — Gloss	50.149055-20	035777328255	650923071	1	5 Gallon		24
UltraPaver® Solvent-Based Clear Florida Sealer — Gloss	50.150054-20	035777328286	650923089	1	5 Gallon		24
Water Repellants							
Hydro-Defend® Concrete Waterproofing Sealer	50.143054-16	035777242438	650712234	2	1 Gallon		25
Hydro-Defend® Concrete Waterproofing Sealer	50.143055-20	035777242421	650712342	1	5 Gallon		25
Hydro-Defend® Concrete & Driveway Protector	50.144154-16	035777242445	650712359	4	1 Gallon		25
Hydro-Defend® Concrete & Driveway Protector	50.144155-20	035777242452	650712367	1	5 Gallon		25
Polishing Products							
EnduraPolish™ Clear Liquid Hardener & Densifier	55.130034-16	035777330463	650924236	2	1 Gallon		27
EnduraPolish™ Clear Liquid Hardener & Densifier	55.130035-20	035777330494	650924244	1	5 Gallon		27
EnduraPolish™ Hi Gloss Lithium Finish	55.130044-16	035777330524	650924251	2	1 Gallon		27
EnduraPolish™ Hi Gloss Lithium Finish	55.130045-20	035777330531	650924269	1	5 Gallon		27
Decorative Stains and Dyes							
Infusion® Dye Stain — Spanish Dagger	41.105001-99	0235777329115	650923717	4	2.6l oz.		28
Infusion® Dye Stain — Reno Gold	41.105002-99	035777329139	650923733	4	2.6l oz.		28
Infusion® Dye Stain — Saddle Brown	41.105003-99	035777329146	650923741	4	2.6l oz.		28
Infusion® Dye Stain — Prickly Cactus	41.105004-99	035777329160	650923758	4	2.6l oz.		28
Infusion® Dye Stain — Salsa Red	41.105005-99	035777329467	650923899	4	2.6l oz.		28
Infusion® Dye Stain — Oasis	41.105006-99	035777329191	650923774	4	2.6l oz.		28
Infusion® Dye Stain — Canyon	41.105007-99	035777329214	650923782	4	2.6l oz.		28
Infusion® Dye Stain — Tortoise Shell	41.105008-99	035777329238	650923808	4	2.6l oz.		28
Infusion® Dye Stain — Ranch Hand Brown	41.105009-99	035777329344	650923816	4	2.6l oz.		28

PRODUCT LIST

Description	SKU#	UPC#	SMIS	Pack	Size	Made to Order	Page
Decorative Stains and Dyes (Continued)							
Infusion® Dye Stain — Cowboy Hat	41.105010-99	035777329474	650923907	4	2.6l oz.		28
Infusion® Dye Stain — Vegas Light	41.105011-99	035777329382	650923832	4	2.6l oz.		28
Infusion® Dye Stain — Red Rock	41.105012-99	035777329399	650923840	4	2.6l oz.		28
Infusion® Dye Stain — Adobe Red	41.105013-99	035777329405	650923857	4	2.6l oz.		28
Infusion® Dye Stain — Stagecoach Brown	41.105014-99	035777329436	650923865	4	2.6l oz.		28
Infusion® Dye Stain — Desert Orange	41.105015-99	035777329443	650923873	4	2.6l oz.		28
Infusion® Dye Stain — Rattler's Brown	41.105016-99	035777329450	650923881	4	2.6l oz.		28
Infusion® Reactive Stain — Wenge Wood	40.102004-16	035777329498	650923915	4	1 Gallon		30
Infusion® Reactive Stain — Wenge Wood	40.102005-20	035777329504	650923923	1	5 Gallon		30
Infusion® Reactive Stain — Rusted Fence	40.102014-16	035777329511	650923931	4	1 Gallon		30
Infusion® Reactive Stain — Rusted Fence	40.102015-20	035777329528	650923949	1	5 Gallon		30
Infusion® Reactive Stain — Black Coffee	40.102024-16	035777329542	650923956	4	1 Gallon		30
Infusion® Reactive Stain — Black Coffee	40.102025-20	035777329573	650923964	1	5 Gallon		30
Infusion® Reactive Stain — Crumbled Brick	40.102034-16	035777329580	650923972	4	1 Gallon		30
Infusion® Reactive Stain — Crumbled Brick	40.102035-20	035777329597	650923980	1	5 Gallon		30
Infusion® Reactive Stain — Potterswheel	40.102044-16	035777329603	650923998	4	1 Gallon		30
Infusion® Reactive Stain — Potterswheel	40.102045-20	035777329610	650924004	1	5 Gallon		30
Infusion® Reactive Stain — Lido Blue	40.102054-16	035777329627	650924012	4	1 Gallon		30
Infusion® Reactive Stain — Lido Blue	40.102055-20	035777329719	650924020	1	5 Gallon		30
Infusion® Reactive Stain — Potato Ivy	40.102064-16	035777329764	650924038	4	1 Gallon		30
Infusion® Reactive Stain — Potato Ivy	40.102065-20	035777329863	650924046	1	5 Gallon		30
Infusion® Reactive Stain — Verdant Plain	40.102074-16	035777329870	650924053	4	1 Gallon		30
Infusion® Reactive Stain — Verdant Plain	40.102075-20	035777329894	650924061	1	5 Gallon		30
Infusion® Reactive Stain — Sienna Red	40.102084-16	035777329900	650924079	4	1 Gallon		30
Infusion® Reactive Stain — Sienna Red	40.102085-20	035777329917	650924087	1	5 Gallon		30
Infusion® Reactive Stain — Mustard Seed	40.102094-16	035777329924	650924095	4	1 Gallon		30
Infusion® Reactive Stain — Mustard Seed	40.102095-20	035777329948	650924103	1	5 Gallon		30
Infusion® Reactive Stain — Midas Gold	40.102104-16	035777329955	650924111	4	1 Gallon		30
Infusion® Reactive Stain — Midas Gold	40.102105-20	035777329979	650924129	1	5 Gallon		30
Infusion® Reactive Stain — Shore Gray	40.102114-16	035777329986	650924137	4	1 Gallon		30
Infusion® Reactive Stain — Shore Gray	40.102115-20	035777330319	650924178	1	5 Gallon		30
Commercial Clear Sealers							
Infusion® Solvent-Based Clear Decorative Concrete Sealer	50.100004-16	035777327944	650922891	4	1 Gallon		32
Infusion® Solvent-Based Clear Decorative Concrete Sealer	50.100005-20	035777327982	650922917	1	5 Gallon		32
Infusion® Solvent-Based Sealer	40.101014-16	035777330357	650924194	4	1 Gallon		32
Infusion® Solvent-Based Sealer	40.101015-20	035777330432	650924210	1	5 Gallon		32
Infusion® Water-Based Sealer	40.101004-16	035777317594	650909625	4	1 Gallon		32
Infusion® Water-Based Sealer	40.101005-20	035777317600	650909633	1	5 Gallon		32
Infusion® Industrial Floor Finish	40.101024-16	035777330333	650924186	2	1 Gallon		32
Infusion® Industrial Floor Finish	40.101025-20	035777330388	650924202	1	5 Gallon		32
ClearProtect™ Solvent-Based Cure And Seal	50.155014-16	035777317648	650909674	4	1 Gallon		33
ClearProtect™ Solvent-Based Cure And Seal	50.155015-20	035777317655	650909682	1	5 Gallon		33
ClearProtect™ High Performance Industrial Clear Coat	50.170154-16	035777317624	650909658	4	1 Gallon		33
ClearProtect™ High Performance Industrial Clear Coat	50.170155-20	035777317631	650909666	1	5 Gallon		33
ClearProtect™ 2-Part Polyurethane Gloss A	50.11735A-20	035777328323	650923097	1	5 Gallon		34
ClearProtect™ 2-Part Polyurethane Gloss B	50.11735B-20	035777328330	650923105	1	5 Gallon		34

PRODUCT LIST

Description	SKU#	UPC#	SMIS	Pack	Size	Made to Order	Page
Commercial Clear Sealers (Continued)							
ClearProtect™ 2-Part Polyurethane Gloss B	50.11735B-16	035777328347	650923113	4	1 Gallon		34
ClearProtect™ 2-Part Polyurethane Satin A	50.11725A-20	035777328460	650923121	1	5 Gallon		34
ClearProtect™ 2-Part Polyurethane Satin B	50.11725B-20	035777328590	650923139	1	5 Gallon		34
ClearProtect™ 2-Part Polyurethane Satin B	50.11725B-16	035777328637	650923147	4	1 Gallon		34
ClearProtect™ 2-Part Polyurethane Gloss A	50.11755A-19	035777467626	650964679	1	5 Gallon		34
ClearProtect™ 2-Part Polyurethane Gloss B	50.11755B-36	035777467633	650964687	2	2 Gallon		34
ClearProtect™ 2-Part Polyurethane Satin A	50.11745A-19	035777467640	650964695	1	5 Gallon		34
ClearProtect™ 2-Part Polyurethane Satin B	50.11745B-36	035777467657	650964703	2	2 Gallon		34
ClearProtect™ 2-Part Polyurethane Gloss A	50.11755A-16	035777467671	650964711	4	1 Gallon		34
ClearProtect™ 2-Part Polyurethane Gloss B	50.11755B-14	035777467701	650964737	6	1 Quart		34
ClearProtect™ 2-Part Polyurethane Satin A	50.11745A-16	035777467817	650964752	4	1 Gallon		34
ClearProtect™ 2-Part Polyurethane Satin B	50.11745B-14	035777467824	650964760	6	1 Quart		34
ClearProtect™ 2-Part Epoxy Gloss Part A	50.17045A-20	035777328781	650923170	1	5 Gallon		35
ClearProtect™ 2-Part Epoxy Part B	50.17045B-20	035777328798	650923188	1	5 Gallon		35
ClearProtect™ 2-Part Epoxy Part B	50.17045B-20	035777328798	650923188	1	5 Gallon		35
ClearProtect™ 2-Part Self-Leveling Epoxy Clear Coat A	50.17055A-30	035777467862	650964778	1	5 Gallon		35
ClearProtect™ 2-Part Self-Leveling Epoxy Clear Coat B	50.17055B-36	035777467886	650964786	2	5 Gallon		35
ClearProtect™ 2-Part Self-Leveling Epoxy Clear Coat A	50.17065A-16	035777467893	650964794	4	2 Gallon		35
ClearProtect™ 2-Part Self-Leveling Epoxy Clear Coat B	50.17065B-16	035777467916	650964802	4	1 Gallon		35
Metallic Flooring							
Pro Series Epoxy Basecoat Part A Epoxy	50.17075A-14	035777856970	650999048	4	1 Quart		36
Pro Series Epoxy Basecoat Gray Part B Hardener	50.17125B-16	035777857090	650999089	4	1 Gallon		36
Pro Series Epoxy Basecoat Black Part B Hardener	50.17105B-16	035777857052	650999063	4	1 Gallon		36
Pro Series Epoxy Basecoat Part A Epoxy	50.17085A-16	035777856994	650999055	1	1 Gallon		36
Pro Series Epoxy Basecoat Gray Part B Hardener	50.17135B-30	035777857106	650999097	1	5 Gallon		36
Pro Series Epoxy Basecoat Black Part B Hardener	50.17115B-30	035777857076	650999071	1	5 Gallon		36
ClearProtect™ 2-Part Self-Leveling Epoxy Clear Coat Part A	50.17045A-20	035777328781	650923170	1	5 Gallon		36
ClearProtect™ 2-Part Self-Leveling Epoxy Clear	50.17045B-20	035777328798	650923188	1	5 Gallon		36
ClearProtect™ 2-Part Self-Leveling Epoxy Clear Coat Part A	50.17065A-16	035777467893	650964794	4	1 Gallon		36
ClearProtect™ 2-Part Self-Leveling Epoxy Clear Coat Part B	50.17065B-16	035777467916	650964802	4	1 Gallon		36
ClearProtect™ 2-Part Self-Leveling Epoxy Clear Coat Part A*	50.17055A-30	035777467862	650964778	1	5 Gallon		36
ClearProtect™ 2-Part Self-Leveling Epoxy Clear Coat Part B	50.17055B-36	035777467886	650964786	2	2 Gallon		36
ClearProtect™ 2-Part Self-Leveling Epoxy Clear Coat Part B - Fast Set	50.17035B-36	035777857113	650999105	2	2 Gallon		36
Metallic Pigment — Silver	20.104301-41	035777854242	650995624	12	16 OZ		37
Metallic Pigment — Crystal	20.104302-41	035777854303	650995657	12	16 OZ		37
Metallic Pigment — Diamond	20.104303-41	035777854310	650995665	12	16 OZ		37
Metallic Pigment — Gem	20.104304-41	035777854327	650995673	12	16 OZ		37
Metallic Pigment — Orange Beryl	20.104305-41	035777854334	650995681	12	16 OZ		37
Metallic Pigment — Slate Onyx	20.104306-41	035777854358	650995699	12	16 OZ		37
Metallic Pigment — Smoke Topaz	20.104307-41	035777854365	650995707	12	16 OZ		37
Metallic Pigment — Rose Gold	20.104308-41	035777854372	650995715	12	16 OZ		37
Metallic Pigment — Jasper	20.104309-41	035777854396	650995723	12	16 OZ		37
Metallic Pigment — Sapphire	20.104310-41	035777854419	650995731	12	16 OZ		37
Metallic Pigment — Ruby	20.104311-41	035777854426	650995749	12	16 OZ		37
Metallic Pigment — Black Diamond	20.104312-41	035777854433	650995756	12	16 OZ		37
Metallic Pigment — Champagne	20.104313-41	035777854440	650995764	12	16 OZ		37

PRODUCT LIST

Description	SKU#	UPC#	SMIS	Pack	Size	Made to Order	Page
Metallic Flooring (Continued)							
Metallic Pigment — Smokey Onyx	20.104314-41	035777854457	650995772	12	16 OZ		37
Metallic Pigment — Fossil	20.104315-41	035777854464	650995780	12	16 OZ		37
Metallic Pigment — Smokey Quartz	20.104316-41	035777854471	650995798	12	16 OZ	Y	37
Metallic Pigment — Blue Topaz	20.104317-41	035777854488	650995806	12	16 OZ	Y	37
Metallic Pigment — Aquamarine	20.104318-41	035777854501	650995814	12	16 OZ	Y	37
Metallic Pigment — Orange Sapphire	20.104319-41	035777854525	650995822	12	16 OZ	Y	37
Metallic Pigment — Amethyst	20.104320-41	035777854549	650995830	12	16 OZ	Y	37
Metallic Pigment — Topaz	20.104321-41	035777854556	650995848	12	16 OZ	Y	37
Metallic Pigment — Peridot	20.104322-41	035777854563	650995855	12	16 OZ		37
Metallic Pigment — Garnet	20.104323-41	035777854570	650995863	12	16 OZ	Y	37
Metallic Pigment — Chocolate Diamond	20.104324-41	035777854587	650995871	12	16 OZ	Y	37
Metallic Pigment — Copper	20.104325-41	035777854594	650995889	12	16 OZ	Y	37
Metallic Pigment — Siam	20.104326-41	035777854600	650995897	12	16 OZ	Y	37
Metallic Pigment — Fire Opal	20.104327-41	035777854617	650995905	12	16 OZ	Y	37
Metallic Pigment — Gold	20.104328-41	035777854624	650995913	12	16 OZ	Y	37
Metallic Pigment — Tiger's Eye	20.104329-41	035777854631	650995921	12	16 OZ	Y	37
Metallic Pigment — Amber	20.104330-41	035777854648	650995939	12	16 OZ	Y	37
Concrete Resurfacers							
Dura-Top™ Resurfacer Instant Texture	60.100209-50	035777324325	650920705	1	50 lb. Bag		38
Dura-Top™ Resurfacer Heavy Texture	60.100109-50	035777324332	650920713	1	50 lb. Bag		38
Dura-Top™ Dual Component Texture	60.100409-50	035777324356	650920747	1	5 Gallon		39
Dura-Top™ Texture Resin	60.100309-20	035777388136	650937030	1	50 lb. Bag		39
Dura-Top™ Stampable Overlay	60.100509-50	035777324998	650921422	1	50 lb. Bag		40
Dura-Top™ Liquid Release	60.100809-20	035777325001	650921430	1	50 lb. Bag		40
Dura-Top™ Broom Finish Repair	60.100609-50	035777325797	650922065	1	5 Gallon		41
Dura-Top™ Micro-Topping	60.100909-50	035777325322	650922040	1	50 lb. Bag		42
Dura-Top™ Florideck Texture	60.100119-50	035777325759	650922057	1	50 lb. Bag		42
Dura-Top™ Fine Texture	60.101109-50	035777526453	650975576	1	50 lb. Bag		43
Color Packs							
Dura-Top™ Color Pack — Birch Bark	60.100001-99	035777324370	650920762	12	1 lb. Bag		44
Dura-Top™ Color Pack — Bamboo	60.100002-99	035777324387	650920770	12	1 lb. Bag		44
Dura-Top™ Color Pack — Dried Sage	60.100003-99	035777324394	650920788	12	1 lb. Bag		44
Dura-Top™ Color Pack — Thistle	60.100004-99	035777324400	650920796	12	1 lb. Bag		44
Dura-Top™ Color Pack — Gullie Blue	60.100005-99	035777324417	650920804	12	1 lb. Bag		44
Dura-Top™ Color Pack — Hot Mauve	60.100006-99	035777324424	650920812	12	1 lb. Bag		44
Dura-Top™ Color Pack — Copper Penny	60.100007-99	035777324431	650920820	12	1 lb. Bag		44
Dura-Top™ Color Pack — Canyon Clay	60.100008-99	035777324448	650920838	12	1 lb. Bag		44
Dura-Top™ Color Pack — Paprika	60.100009-99	035777324455	650920846	12	1 lb. Bag		44
Dura-Top™ Color Pack — Brickwork Red	60.100010-99	035777324462	650920853	12	1 lb. Bag		44
Dura-Top™ Color Packs — Cotton Ball	60.100011-99	035777324493	650920887	12	1 lb. Bag		44
Dura-Top™ Color Pack — Tweed	60.100012-99	035777324509	650920895	12	1 lb. Bag		44
Dura-Top™ Color Pack — Sandstone	60.100013-99	035777324516	650920903	12	1 lb. Bag		44
Dura-Top™ Color Pack — Soapstone	60.100014-99	035777324523	650920911	12	1 lb. Bag		44
Dura-Top™ Color Pack — Fawn	60.100015-99	035777324530	650920929	12	1 lb. Bag		44
Dura-Top™ Color Pack — Blank Canvas	60.100016-99	035777324554	650920945	12	1 lb. Bag		44
Dura-Top™ Color Pack — Alabaster	60.100017-99	035777324561	650920952	12	1 lb. Bag		44
Dura-Top™ Color Pack — Cemented Deal	60.100018-99	035777324578	650920960	12	1 lb. Bag		44

PRODUCT LIST

Description	SKU#	UPC#	SMIS	Pack	Size	Made to Order	Page
Color Packs (Continued)							
Dura-Top™ Color Pack — Siberian Haze	60.100019-99	035777324585	650920978	12	1 lb. Bag		44
Dura-Top™ Color Pack — Natural Cork	60.100020-99	035777324592	650920986	12	1 lb. Bag		44
Dura-Top™ Color Pack — Buckhead Brown	60.100021-99	035777324608	650920994	12	1 lb. Bag		44
Dura-Top™ Color Pack — Maple	60.100022-99	035777324615	650921000	12	1 lb. Bag		44
Dura-Top™ Color Pack — Bold Bark	60.100023-99	035777324622	650921018	12	1 lb. Bag		44
Dura-Top™ Color Pack — Black Walnut	60.100024-99	035777324639	650921026	12	1 lb. Bag		44
Dura-Top™ Color Pack — Coffee Bean	60.100025-99	035777324646	650921034	12	1 lb. Bag		44
Dura-Top™ Color Pack — Brushed Steel	60.100026-99	035777324653	650921042	12	1 lb. Bag		44
Dura-Top™ Color Pack — Gadget Gray	60.100027-99	035777324660	650921059	12	1 lb. Bag		44
Dura-Top™ Color Pack — City Sidewalk	60.100028-99	035777324677	650921067	12	1 lb. Bag		44
Dura-Top™ Color Pack — Solitude	60.100029-99	035777324684	650921075	12	1 lb. Bag		44
Dura-Top™ Color Pack — Pepper Black	60.100030-99	035777324707	650921091	12	1 lb. Bag		44
Color Hardeners And Release							
Dura-Top™ Color Hardener — Copper Penny	61.100007	035777325032	650921547	1	50 lb. Bag /5 Gallon Pail		46
Dura-Top™ Color Hardener — Tweed	61.100012	035777325049	650921554	1	50 lb. Bag /5 Gallon Pail		46
Dura-Top™ Color Hardener — Sandstone	61.100013	035777325056	650921562	1	50 lb. Bag /5 Gallon Pail		46
Dura-Top™ Color Hardener — Fawn	61.100015	035777325063	650921570	1	50 lb. Bag /5 Gallon Pail		46
Dura-Top™ Color Hardener — Alabaster	61.100017	035777325087	650921596	1	50 lb. Bag /5 Gallon Pail		46
Dura-Top™ Color Hardener — Cemented Deal	61.100018	035777325094	650921604	1	50 lb. Bag /5 Gallon Pail		46
Dura-Top™ Color Hardener — Siberian Haze	61.100019	035777325162	650921752	1	50 lb. Bag /5 Gallon Pail		46
Dura-Top™ Color Hardener — Natural Cork	61.100020	035777325179	650921778	1	50 lb. Bag /5 Gallon Pail		46
Dura-Top™ Color Hardener — Maple	61.100022	035777325186	650921794	1	50 lb. Bag /5 Gallon Pail		46
Dura-Top™ Color Hardener — Brushed Steel	61.100026	035777325193	650921810	1	50 lb. Bag /5 Gallon Pail		46
Dura-Top™ Powder Release — Copper Penny	62.100007	035777325223	650921943	1	50 lb. Bag /5 Gallon Pail		46
Dura-Top™ Powder Release — Sandstone	62.100013	035777325230	650921950	1	50 lb. Bag /5 Gallon Pail		46
Dura-Top™ Powder Release — Fawn	62.100015	035777325254	650921976	1	50 lb. Bag /5 Gallon Pail		46
Dura-Top™ Powder Release — Siberian Haze	62.100019	035777325261	650921984	1	50 lb. Bag /5 Gallon Pail		46
Dura-Top™ Powder Release — Maple	62.100022	035777325278	650921992	1	50 lb. Bag /5 Gallon Pail		46
Dura-Top™ Powder Release — Bold Bark	62.100023	035777325285	650922008	1	50 lb. Bag /5 Gallon Pail		46
Dura-Top™ Powder Release — Black Walnut	62.100024	035777325292	650922016	1	50 lb. Bag /5 Gallon Pail		46
Dura-Top™ Powder Release — Coffee Bean	62.100025	035777325247	650921968	1	50 lb. Bag /5 Gallon Pail		46
Dura-Top™ Powder Release — Solitude	62.100029	035777325308	650922024	1	50 lb. Bag /5 Gallon Pail		46
Dura-Top™ Powder Release — Pepper Black	62.100030	035777325315	650922032	1	50 lb. Bag /5 Gallon Pail		46
Commercial Water Repellents							
Hydro-Defend® Silane SI-40 Water Repellent	50.145055-20	035777328088	650922958	1	5 Gallon		48
Hydro-Defend® Siloxane SX-7 Water Repellent	50.144055-20	035777328095	650922966	1	5 Gallon		48
Hydro-Defend® Super V Repellent	50.145001-15	035777328095	650922966	1	5 Gallon		49
Hydro-Defend® HB-100 Water Repellent	50.140105-20	035777328033	650922925	1	5 Gallon		49
Hydro-Defend® HB-150 Water Repellent	50.140155-20	035777328071	650922933	1	5 Gallon		49



H&C[®] PRODUCT CATALOG

H&C[®] Concrete Coatings
Prospect Ave., Cleveland, Ohio 44115
1-800-867-8246

10/17

720-0242-000
7001695